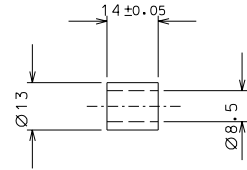
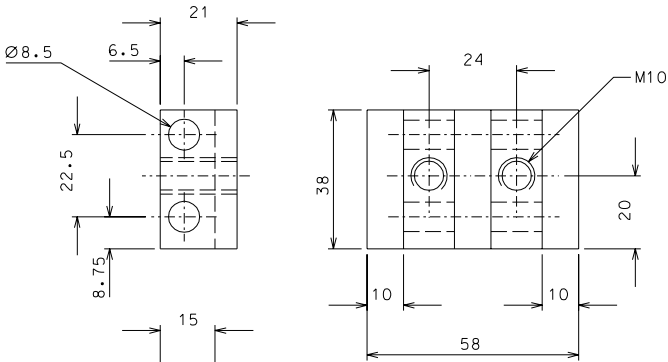


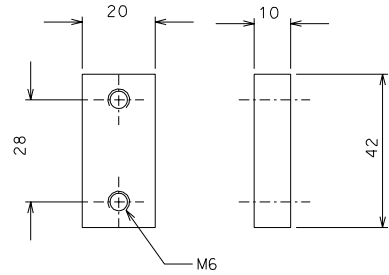
79



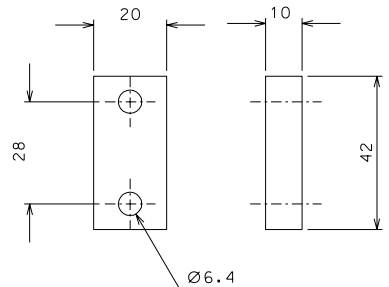
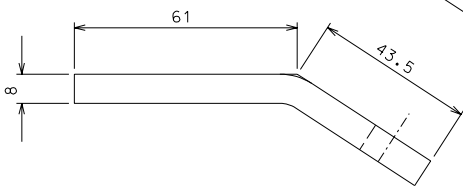
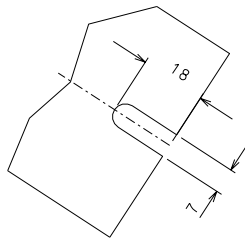
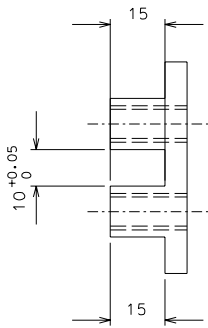
82



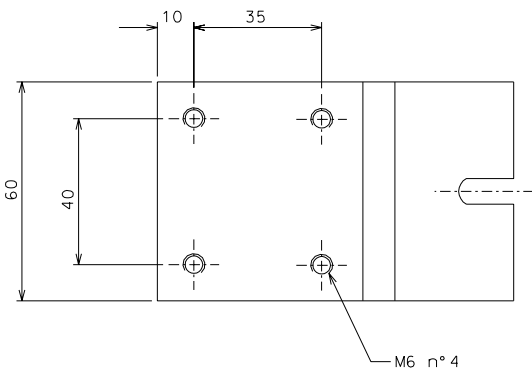
83



85



86



84

ref.	note	date	signature
modifications			
85	1 AISI 304 1/1		
84	1 AISI 304 1/1		
83	1 AISI 304 1/1		
82	8 AISI 304 1/1		
79	4 AISI 304 1/1		
86	1 AISI 304 1/1		
ref.	pieces	mat. and treatments	scale
86	1	AISI 304	1/1

General machining tolerances UNI 5307-63								
Dimensions	< 6	6-30	30-120	120-315	315-1000	>1000-2000	>2000-4000	>4000
Linear Toli.	± 0.1	± 0.2	± 0.3	± 0.5	± 0.8	± 1.2	± 2	± 3
angular Toli.	± 1'	± 30'	± 20'	± 10' referred to the shortest side				
designed for							R.De Salvo	
draw. by							G. Gennaro-PROMECA	
date							28-01-05	
title							scale 1/1	
HAM-OPTICAL BENCH							LIGO-D050146-00-D	
DETAIL MOUNTING BLADE							ref. from 144 A 2	