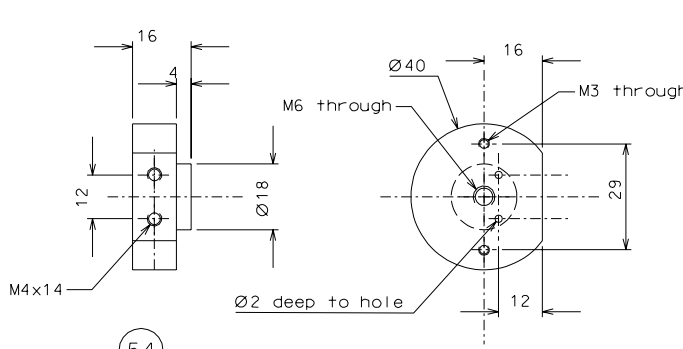
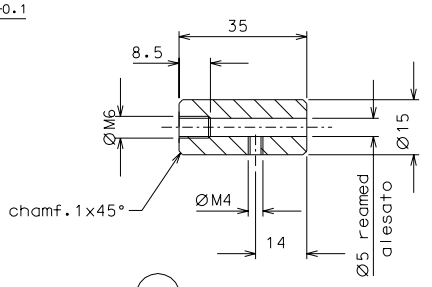
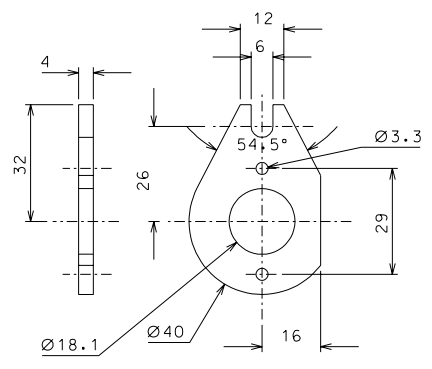


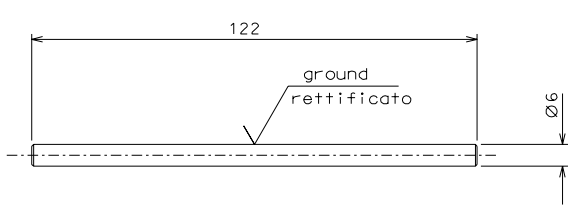
60



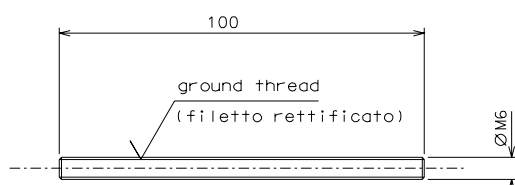
54



56



55



53

ref.	note	date	signature
modifications			
60	4 AISI 304 1/1		
56	4 bronze B14 1/1		
55	4 inox 1/1		
54	4 peek 1000 1/1		
53	4 inox 1/1	61	4 EN 6082 1/1
ref.	pieces	mat. and treatments	scale

General machining tolerances UNI 5307-63								
Dimensions	< 6	6-30	30-120	120-315	315-1000	>1000-2000	>2000-4000	>4000
Linear Toli.	± 0.1	± 0.2	± 0.3	± 0.5	± 0.8	± 1.2	± 2	± 3
angular Toli.	± 1'	± 30'	± 20'	± 10'				
referred to the shortest side							designed for	
							R.De Salvo	
							draw. by G. Gennaro-PROMEC	
title HAM-OPTICAL BENCH MOTORIZED VERTICAL SPRING							date 13-01-05	
							scale 1/1	
ref. from 109							title LIGO-D050140-00-D scale A 2	