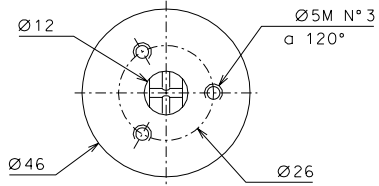
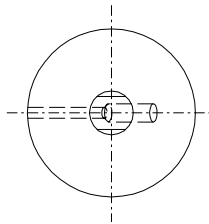
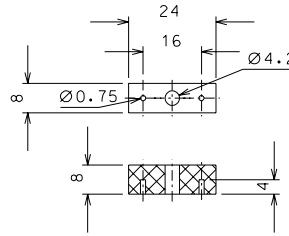


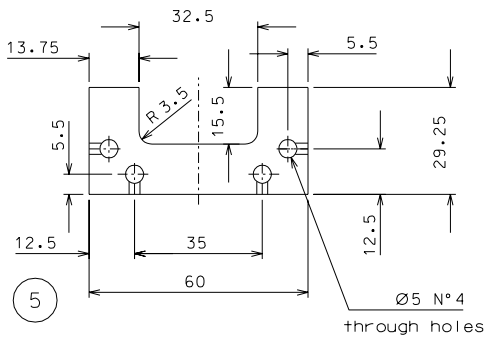
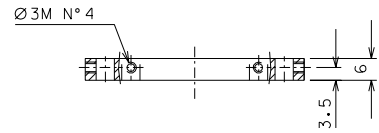
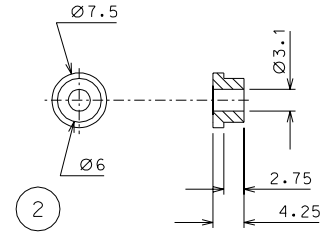
7



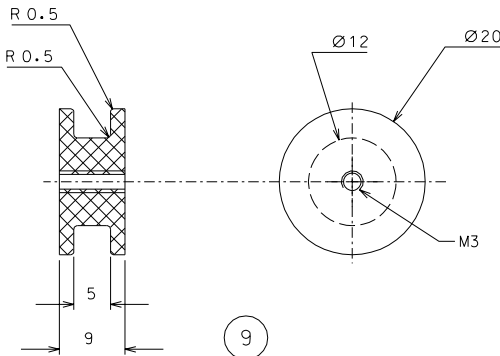
10



7.1



5



9

Primary coil: wire 41-AWG, turns 2150.  
Use only kapton insulated wires approved by LIGO,  
all other kinds of enamel are forbidden.

ref.	note	date	signature
modifications			
7	4 EN 6082	1:1	
5	8 EN 6082	1:1	10 8 AISI 304 2:1
2	32 peek 1000	2:1	9 4 peek 1000 2:1
1	32 peek 1000	2:1	7.1 4 peek 1000 2:1
ref. pieces	mat. and treatments	scale	ref. pieces mat. and treatments scale

General machining tolerances UNI 5307-63								
Dimensions	< 6	> 6-30	> 30-120	> 120-315	> 315-1000	> 1000-2000	> 2000-4000	> 4000
Linear Toli.	± 0.1	± 0.2	± 0.3	± 0.5	± 0.8	± 1.2	± 2	± 3
angular Toli.	± 1'	± 30'	± 20'	referred to the shortest side				

designed for <b>R.De Salvo</b>	
draw. by <b>G. Gennaro-PROME</b>	scale 1/1
date 6-01-05	scale 1/1
title <b>HAM-OPTICAL BENCH</b>	
LVDI	
data1 from 112	A 2