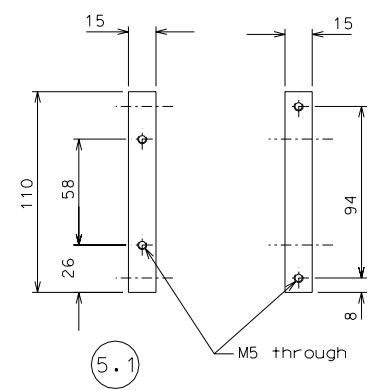
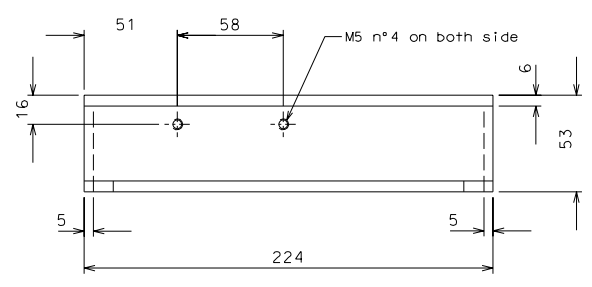
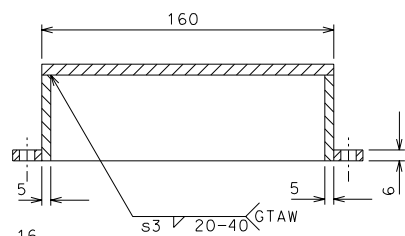


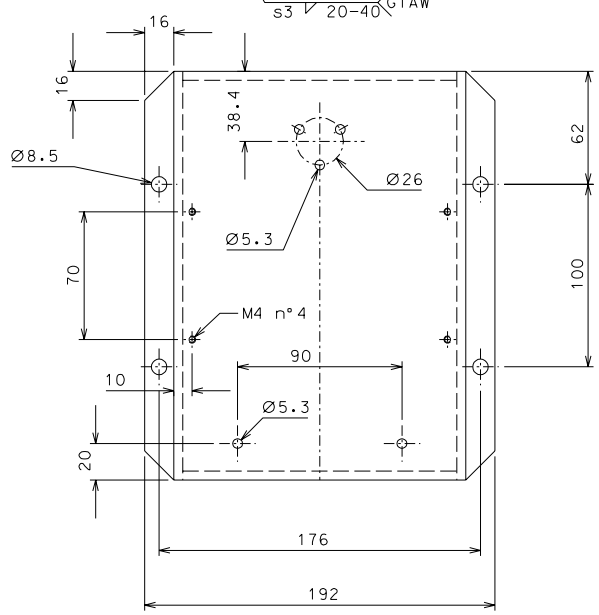
5



5.1



6



ref.	note	date	signature
modifications			
6	4	AISI 304 L	1/2
5.1	8	AISI 304 L	1/2
5	4	AISI 304 L	1/2
ref.	pieces	mat. and treatments	scale

General machining tolerances UNI 5307-63								
Dimensions	< 6	= 6-30	> 30-120	> 120-315	> 315-1000	> 1000-2000	> 2000-4000	> 4000
Linear Toli.	± 0.1	± 0.2	± 0.3	± 0.5	± 0.8	± 1.2	± 2	± 3
angular Toli.	± 1'	± 30'	± 20'	± 10'				
referred to the shortest side								
designed for							R.De Salvo	
draw. by							G. Gennaro-PROMEC	
date							5-01-05	
scale							1/2	
title							LIGO-D050130-01-D	
HAM-OPTICAL BENCH							detail from 105	
DETAILS LVDT ACTUATOR							A 2	