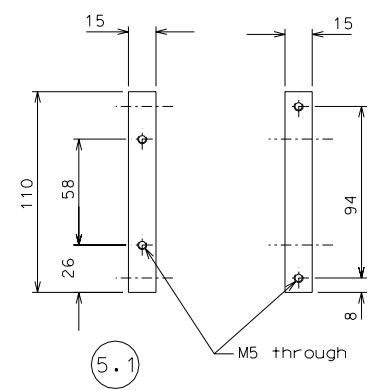
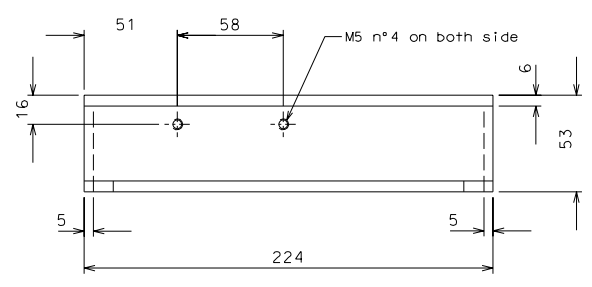
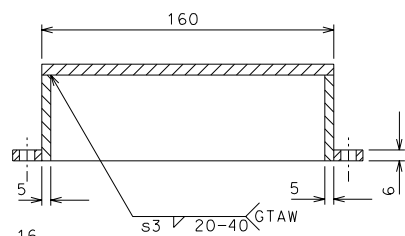


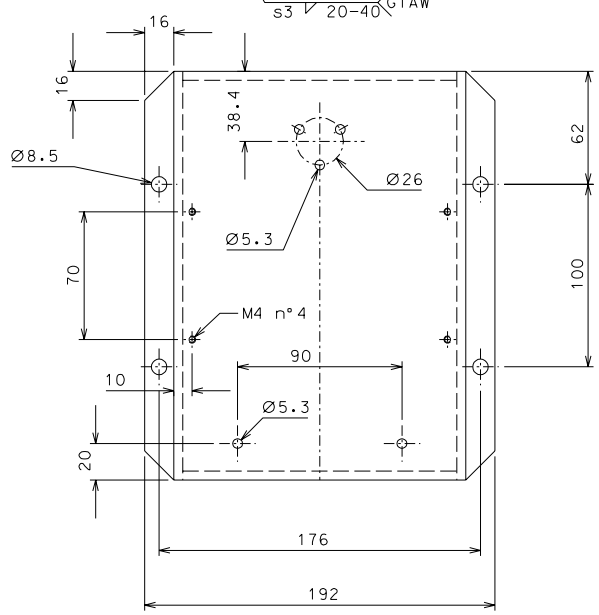
5



5.1



6



ref.	note	date	signature
modifications			
6	4	AISI 304 L	1/2
5.1	8	AISI 304 L	1/2
5	4	AISI 304 L	1/2
ref.	pieces	mat. and treatments	scale

General machining tolerances UNI 5307-63

Dimensions	< 6	6-30	>30-120	>120-315	>315-1000	>1000-2000	>2000-4000	>4000
Linear Toli.	± 0.1	± 0.2	± 0.3	± 0.5	± 0.8	± 1.2	± 2	± 3
angular Toli.	± 1'	± 30'	± 20'	± 10' referred to the shortest side				

designed for: **R.De Salvo**
 draw. by: **G. Gennaro-PROMEC**
 date: 5-01-05 scale: 1/2
 title: **HAM-OPTICAL BENCH**
DETAILS LVDT ACTUATOR
 LIGO-D050130-00-D
 detail from: 105 A 2