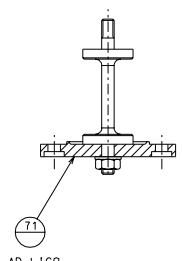
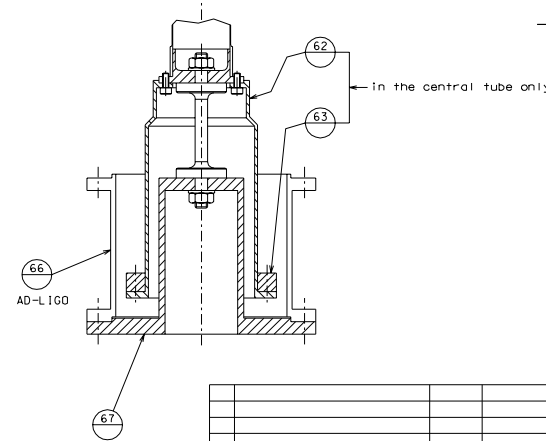
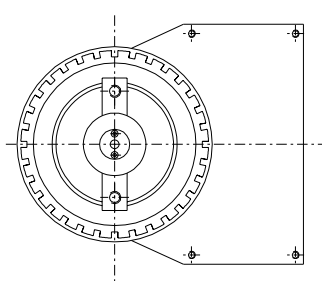


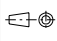
LIGO-1



AD-LIGO

part no.	description	quantity
39-2	tommy head M10x35	8
38-37	tommy head M5x12 (S)	8
39-41	tommy head M4x12	8
31-32	tommy head M10x25 (S)	16
1-31	tommy head M10x30	16
1-29	tommy head M10x30	16
detail	type	n° piec.
Screw's table		

rev.	note	date	signature
modifications			
37	037 top leg disk	71	038 Adv-L100 flex joint base
36	037 small flex joint	67	035 flex joint base
35	036 1P leg	66	035 Adv-L100 ext. spool
34	037 flex joint connector	63	036 C. weight
33	038 maint. locking screw	62	036 c. weight bell
32	038 safety tube	41	037 disk
31	036 L100-1 safety tube ext.	40	037 1/2 cups
30	035 main flex joint	39	037 small flex joint base pl.
29	035 L100-1 flex joint base	38	037 1/2 cup retainer
rev.	draw.	date	signature


LIGO PROJECT
 designed by: **R. De Salvo**
 drawn by: **G. Gennaro-PROMECC**
 date: **26-12-04**
HAM-OPTICAL TABLE
 INVERTED PENDULUM
 scale: 1/2
 sheet: **A 1**