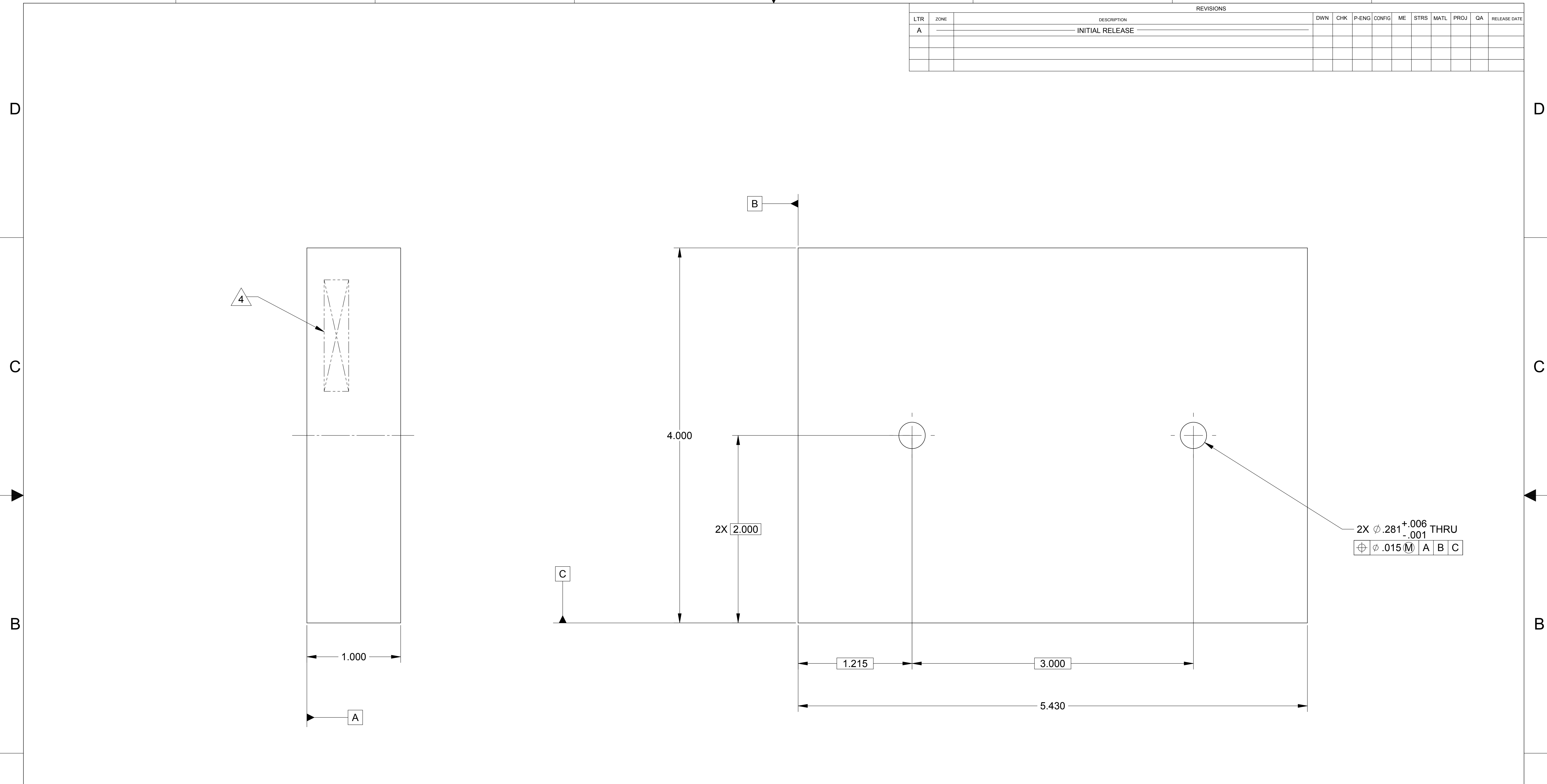


LTR		ZONE	DESCRIPTION	REVISIONS																	
DWN	CHK	P-ENG	CONFIG	ME	STRS	MATL	PROJ	QA	RELEASE DATE												
A			INITIAL RELEASE																		



NOTES: UNLESS OTHERWISE SPECIFIED.

- ALL PARTS SHALL BE MANUFACTURED IN ACCORDANCE WITH ASI SPECIFICATION 20008225 (LIGO E048225).
- REMOVE ALL BURRS AND SHARP EDGES .005-.015.
- MARK PART AND SERIAL NUMBER IN LOCATION APPROXIMATELY AS SHOWN USING 0.13-INCH HIGH CHARACTERS IN ACCORDANCE WITH 20006686, TYPE I, CLASSES 4, 5, OR 6. SERIAL NUMBERS START AT 001 FOR FIRST PART AND PROCEED CONSECUTIVELY. PARTS TOO SMALL TO MARK SHALL BE IDENTIFIED IN ACCORDANCE WITH 20006686, TYPE II.
- COUNTERSINK 82° ALL DRILLED HOLES .015-.030 DEEP BOTH SIDES.
- RECORD WEIGHT TO NEAREST 0.1 LB ON INSPECTION REPORT AFTER FINAL MACHINING. ESTIMATED WEIGHT IS 6.3 LBS

THIS DOCUMENT MAY CONTAIN ITAR CONTROLLED INFORMATION AND/OR COMMERCE CONTROLLED INFORMATION EXPORT RESTRICTIONS MAY APPLY

QTY REQD		ITEM NO	REF DES	CAGE NO	20007877-1	PART OR IDENTIFYING NO	NOMENCLATURE OR DESCRIPTION	SPECIFICATION	MATERIAL OR NOTE	ZONE		
PARTS LIST												
CONTRACT NO		UNLESS OTHERWISE SPECIFIED DIMENSIONS ARE IN INCHES										
		TOLERANCES										
		DECIMALS			ANGLES							
		.XX ±.03			.XXX ±.010			± 1/2°				
		MACHINE FINISH 125										
		DO NOT SCALE DRAWING INTERPRET DWG PER ASME Y14.5M-1994										
		MATERIAL 303 CRES FORGING PER ASTM A473										
20007845		1388			20007877-1						WEIGHT, ACTUATOR COMPENSATION - STAGE 2 LIGO-D047877-A	
NEXT ASSEMBLY		PROJECT CODE			DWN KEVIN J SPINK			02/09/05			REV A	
APPLICATION					CHK			MATL			SCALE 2:1	
					CONFIG			PROJ			CAGE CODE 1KNU9	
					ME			QA			UNCLASSIFIED SHEET 1 OF 1	

RELEASED
2/22/2005

asi ALLIANCE SPACESYSTEMS, INC.
1250 Lincoln Ave., Suite 100
Pasadena, CA 91103

FILE ATTACHMENTS
20007877.x_t