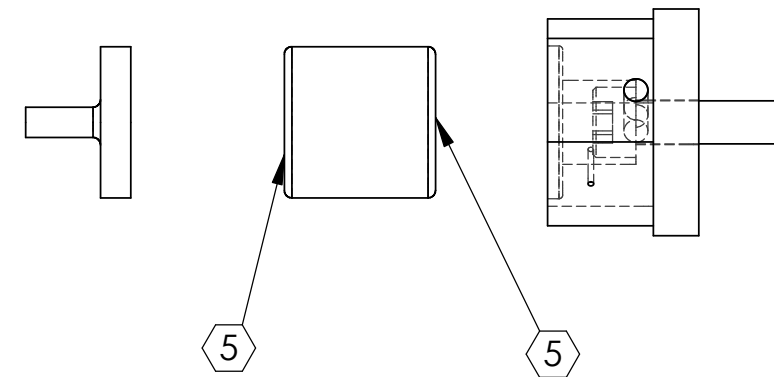
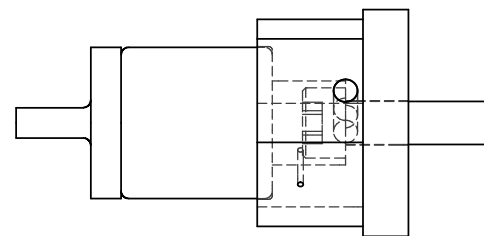
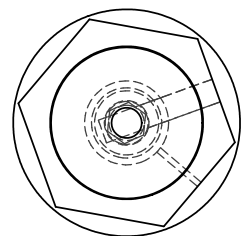
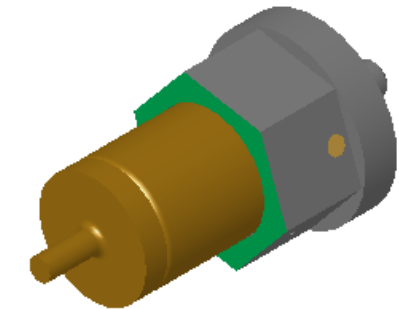
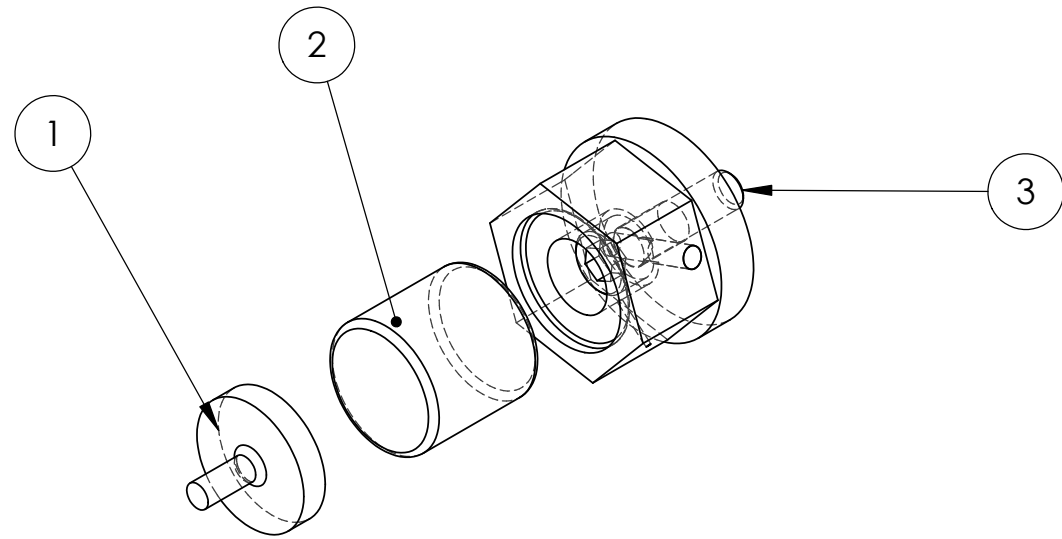


REV.	DATE	DCN #	DRAWING TREE #
A	FEB 17th 2006	E060057-00	E060059-A



ITEM NO	REQ.	SPARE	TOT.	PART NUMBER	DESCRIPTION	MATERIAL
3	1	1	2	D040398	HEX MAGNET SPACER	6061-T6-Al
2	1	1	2	D020466	NICKEL PLATED MAGNET	Nd:Fe:Bo
1	1	0	1	D020197	FLAG (FOR MAGNET D020466)	6061-T6-Al

PARTS LIST

NOTES: (UNLESS OTHERWISE SPECIFIED)

- DIMENSIONS IN INCHES.
- REMOVE ALL SHARP EDGES R.02 MIN.
- ALL MACHINING FLUIDS SHALL BE WATER SOLUBLE AND FREE OF SULFUR, CHLORINE AND SILICONE, SUCH AS CINCINNATI MILACRON'S CIMTECH 410 (STAINLESS STEEL).
- D040397 IS MOUNTED ONTO EACH MASS USING THE MODIFIED 3/8" x 1/2" (beryllium copper) DEEP SOCKET, LIGO-D040473.
- THE MAGNET, FLAG AND SPACER ARE BONDED TOGETHER USING VACSEAL*. PRIOR TO BONDING THE SURFACES ARE SANDED WITH 600 GRIT SAND PAPER.
* IT SHOULD BE NOTED THAT VACSEAL HAS A SHORT SHELF LIFE.

REF: DESIGN BY C TORRIE, M P-LLOYD, R. PANIAGUA & J. ROMIE.

NAME	DATE
DRAWN C Torrie	16 Sept 2004
CHECKED M P-Lloyd	16 Sept 2004

DIMENSIONS ARE IN INCHES
TOLERANCES:
.XX ± 0.01
.XXX ± 0.005

ANGULAR ± 0.5 °
MATERIAL
FINISH

LIGO CALIFORNIA INSTITUTE OF TECHNOLOGY
MASSACHUSETTS INSTITUTE OF TECHNOLOGY
IGR, GLASGOW UNIVERSITY GEO 600 GROUP

SYSTEM **ADVANCED LIGO**

SUB-SYSTEM **SUS**

NEXT ASSY **ETM C_PTYPE**

PART NAME **ASSEMBLY MAGNET FLAG & HEX SPACER**

SIZE **A** DWG. NO. **D040397** REV. **A**

SCALE: NTS PROJECTION: SHEET 1 OF 1
FILE NAME/LOCATION: