

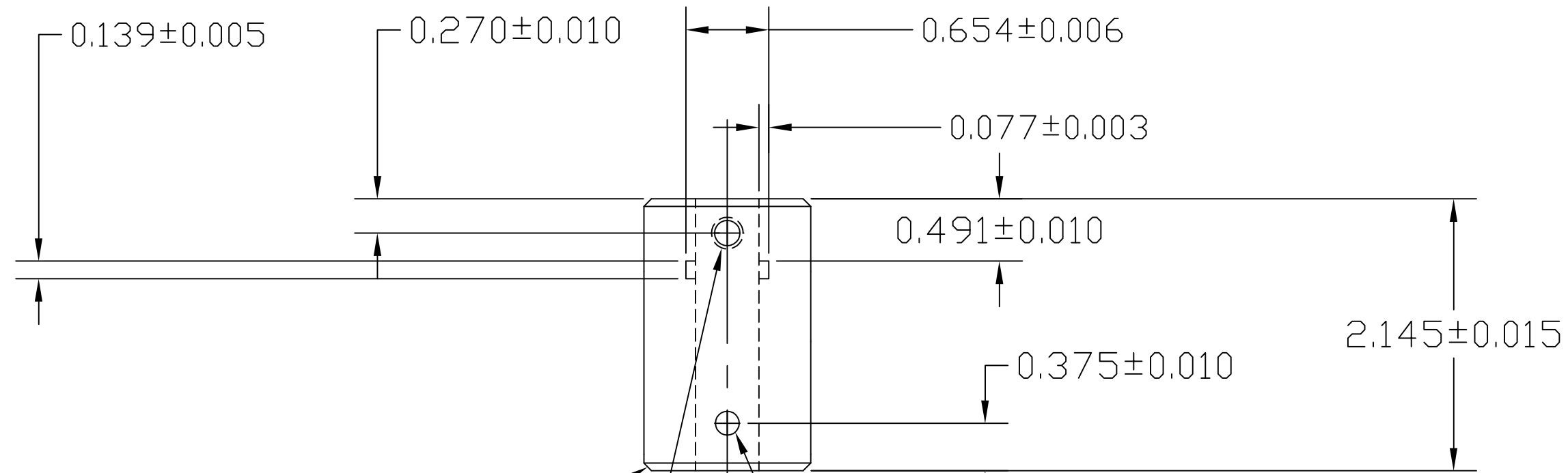
NOTES: (UNLESS OTHERWISE SPECIFIED)

FLOAT SWITCH BUSHING

MATERIAL: ALUMINUM 6061-T6/7075-T6

MAKE 4 PER ASSEMBLY

REV.	DATE	DCN #	DRAWING TREE #
A	4-21-04	E040214-00-D	



1/16 X 45
DEG. CHAMF. 2 PL

1/4-20 THRU ONE WALL

LIGHT PRESS FIT FOR
3/16 DOWEL
TWO HOLES IN LINE

Ø0.500
SLIDING FIT WITH PART
SUPPLIED

NOTE: # 112 O-RING GROOVE
[SEE DATA AND O-RING SUPPLIED]

Ø1.3160
NOTE: THIS DIA SHOULD BE
SLIGHT PRESS /OR CLOSE
SLIDING FIT WITH PART
SUPPLIED

O-Ring Gland Dimensions
Face Gland Seals
All Dimensions in Inches

W Cross Section		L Gland Depth	Squeeze		G Groove Width		R Groove Radius
Nominal	Actual		Actual	Percent	Liquids	Vacuum and Gases	
1/16	.070 +/- .003	.050 to .054	.013 to .023	19 to 32	.101 to .107	.083 to .088	.005 to .015
3/32	.103 +/- .003	.074 to .080	.020 to .032	20 to 30	.136 to .142	.118 to .123	.005 to .015

ITEM NO.	REQ. QUANTITY	SPARE	TOT.	PART NUMBER	DESCRIPTION	SUPPLIER
PARTS LIST						
UNLESS OTHERWISE SPECIFIED: DIMENSIONS ARE IN INCHES				DATE	NAME	LIGO CALIFORNIA INSTITUTE OF TECHNOLOGY MASSACHUSETTS INSTITUTE OF TECHNOLOGY
DRAWN				4/21/04	KENM	
TOLERANCES: XX ± .005				CHECKED		SYSTEM LLO
XXX ± .01						SUB-SYSTEM HEPI
ANGULAR± 3 DEG						NEXT ASSY N/A
MATERIAL: SEE NOTE				COMMENTS:		PART NAME FLOAT SWITCH ROD BUSHING
FINISH: BLK ANODIZE						SIZE DWG. NO. D040196-A
						REV A
						SHEET 1 OF 1