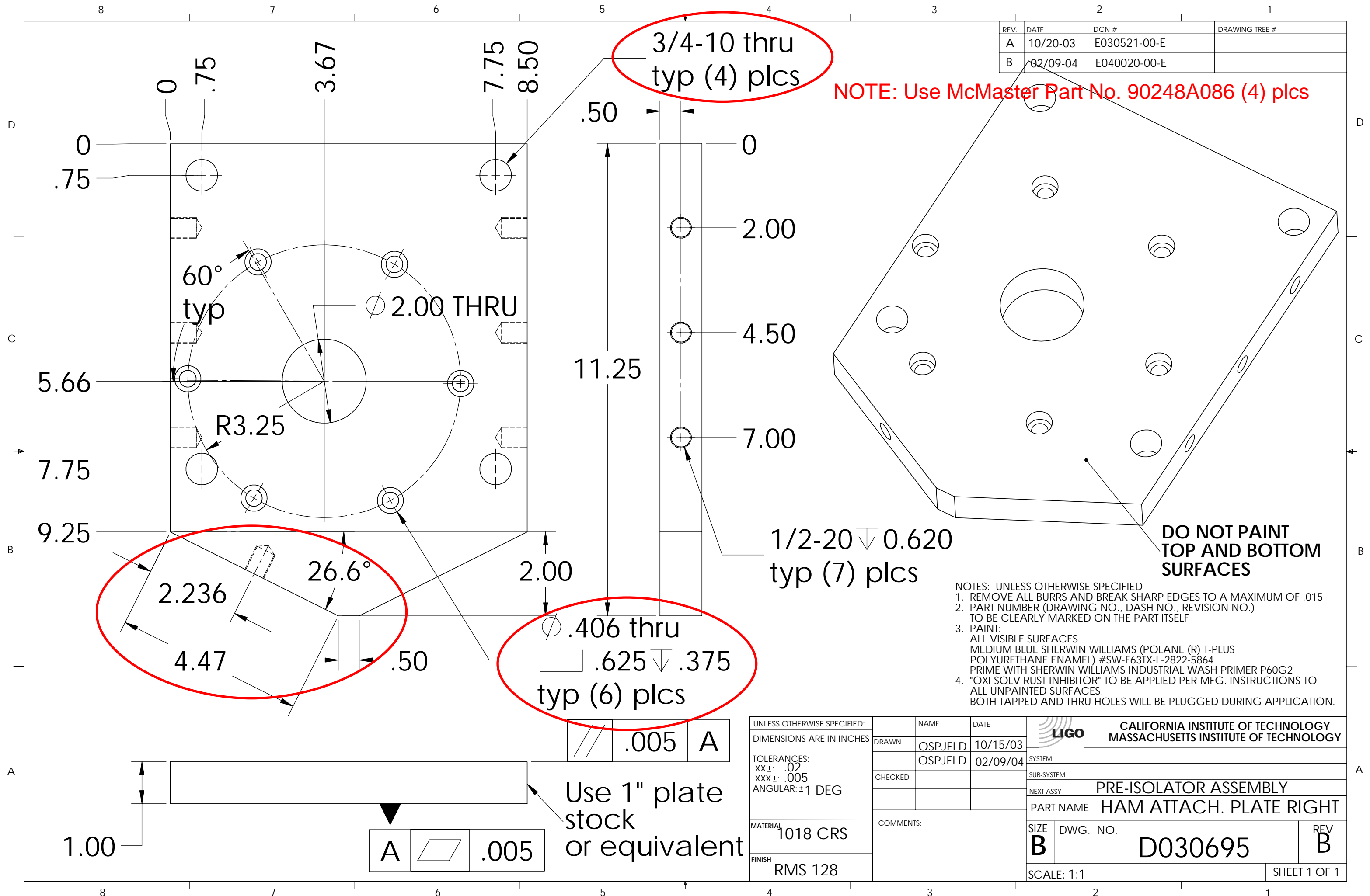


REV.	DATE	DCN #	DRAWING TREE #
A	10/20-03	E030521-00-E	
B	02/09-04	E040020-00-E	



NOTE: Use McMaster Part No. 90248A086 (4) plcs

DO NOT PAINT TOP AND BOTTOM SURFACES

- NOTES: UNLESS OTHERWISE SPECIFIED
- REMOVE ALL BURRS AND BREAK SHARP EDGES TO A MAXIMUM OF .015
 - PART NUMBER (DRAWING NO., DASH NO., REVISION NO.) TO BE CLEARLY MARKED ON THE PART ITSELF
 - PAINT: ALL VISIBLE SURFACES MEDIUM BLUE SHERWIN WILLIAMS (POLANE (R) T-PLUS POLYURETHANE ENAMEL) #SW-F63TX-L-2822-5864 PRIME WITH SHERWIN WILLIAMS INDUSTRIAL WASH PRIMER P60G2
 - "OXI SOLV RUST INHIBITOR" TO BE APPLIED PER MFG. INSTRUCTIONS TO ALL UNPAINTED SURFACES. BOTH TAPPED AND THRU HOLES WILL BE PLUGGED DURING APPLICATION.

UNLESS OTHERWISE SPECIFIED:
DIMENSIONS ARE IN INCHES

NAME	DATE
OSPJELD	10/15/03
OSPJELD	02/09/04

TOLERANCES:
.XX±: .02
.XXX±: .005
ANGULAR: ±1 DEG

MATERIAL 1018 CRS

FINISH RMS 128

LIGO CALIFORNIA INSTITUTE OF TECHNOLOGY
MASSACHUSETTS INSTITUTE OF TECHNOLOGY

SYSTEM

SUB-SYSTEM

NEXT ASSY PRE-ISOLATOR ASSEMBLY

PART NAME HAM ATTACH. PLATE RIGHT

SIZE DWG. NO. **B** D030695 REV **B**

SCALE: 1:1 SHEET 1 OF 1

Use 1" plate stock or equivalent

A .005

A .005