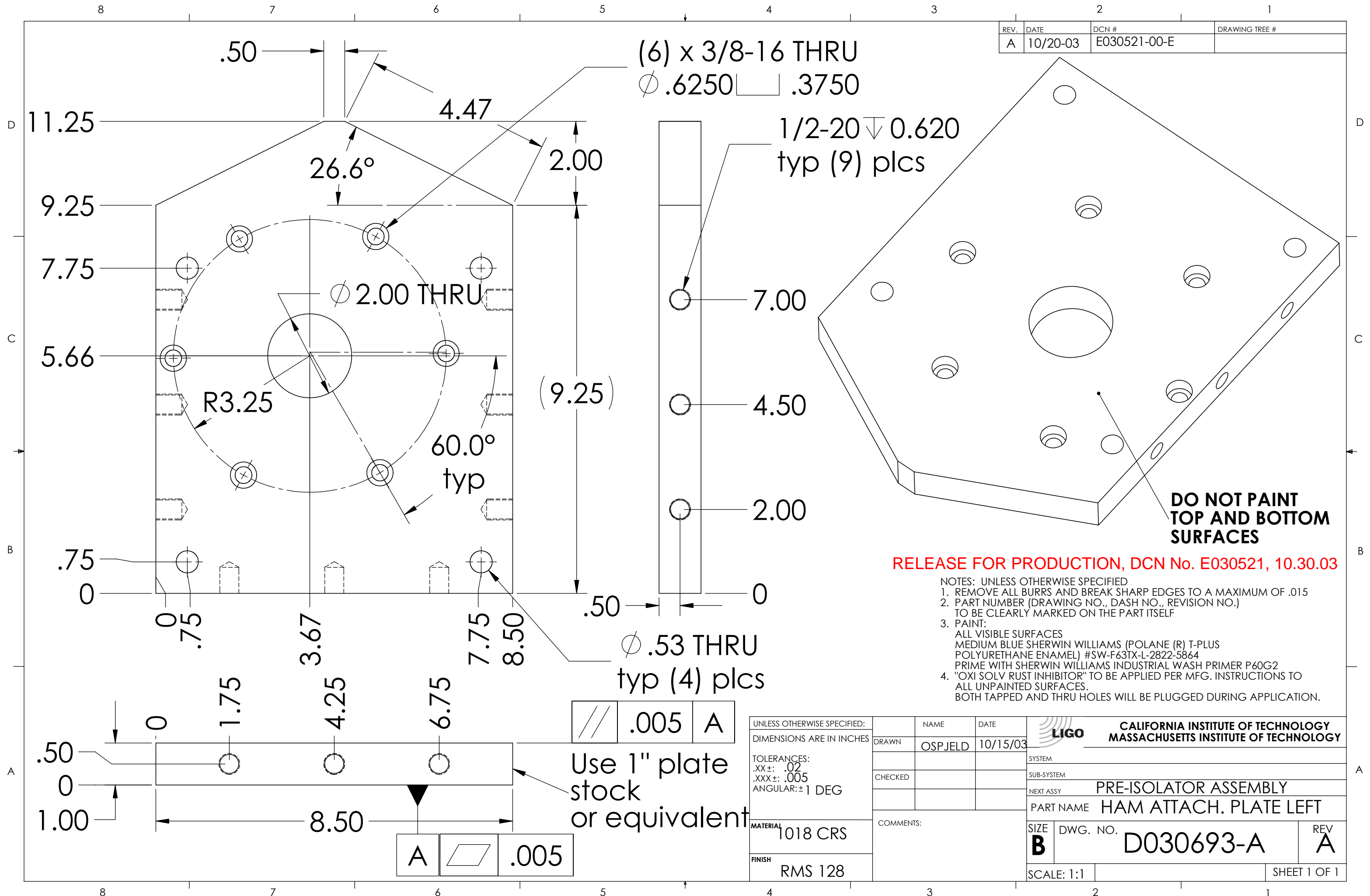


REV.	DATE	DCN #	DRAWING TREE #
A	10/20-03	E030521-00-E	



(6) x 3/8-16 THRU
 ϕ .6250 \square .3750

1/2-20 ∇ 0.620
 typ (9) plcs

**DO NOT PAINT
 TOP AND BOTTOM
 SURFACES**

RELEASE FOR PRODUCTION, DCN No. E030521, 10.30.03

- NOTES: UNLESS OTHERWISE SPECIFIED
1. REMOVE ALL BURRS AND BREAK SHARP EDGES TO A MAXIMUM OF .015
 2. PART NUMBER (DRAWING NO., DASH NO., REVISION NO.) TO BE CLEARLY MARKED ON THE PART ITSELF
 3. PAINT:
 ALL VISIBLE SURFACES
 MEDIUM BLUE SHERWIN WILLIAMS (POLANE (R) T-PLUS POLYURETHANE ENAMEL) #SW-F63TX-L-2822-5864
 PRIME WITH SHERWIN WILLIAMS INDUSTRIAL WASH PRIMER P60G2
 4. "OXI SOLV RUST INHIBITOR" TO BE APPLIED PER MFG. INSTRUCTIONS TO ALL UNPAINTED SURFACES.
 BOTH TAPPED AND THRU HOLES WILL BE PLUGGED DURING APPLICATION.

\parallel .005 A

Use 1" plate stock or equivalent

A \square .005

UNLESS OTHERWISE SPECIFIED: DIMENSIONS ARE IN INCHES		NAME	DATE	CALIFORNIA INSTITUTE OF TECHNOLOGY MASSACHUSETTS INSTITUTE OF TECHNOLOGY
TOLERANCES: .XX±: .02 .XXX±: .005 ANGULAR: ±1 DEG		DRAWN	10/15/03	
MATERIAL		CHECKED		SYSTEM
FINISH		COMMENTS:		SUB-SYSTEM
1018 CRS				NEXT ASSY
RMS 128				PART NAME
				PRE-ISOLATOR ASSEMBLY
				HAM ATTACH. PLATE LEFT
		SIZE	DWG. NO.	REV
		B	D030693-A	A
		SCALE: 1:1	SHEET 1 OF 1	