

1

2

3

4

5

6

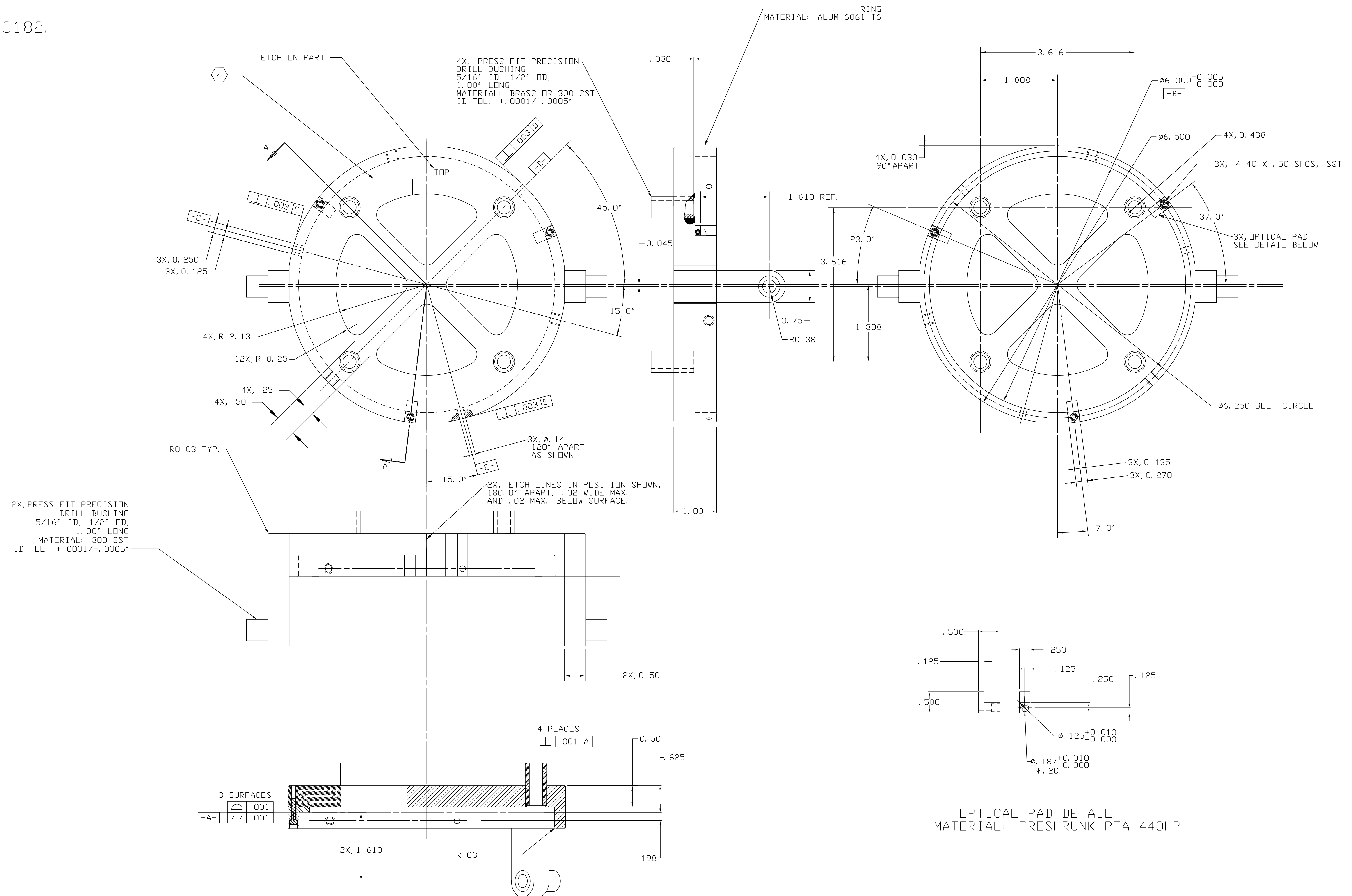
7

8

REV	DATE	DRWN BY	CHECKED	BY	DESCRIPTION
A	9/03	J. ROMIE			E030462/INITIAL RELEASE

NOTES: (UNLESS OTHERWISE SPECIFIED)

1. DIMENSIONS IN INCHES.
2. BREAK ALL SHARP EDGES.
3. ALL MACHINING FLUIDS SHALL BE WATER SOLUBLE AND FREE OF SULFUR, CHLORINE AND SILICONE, SUCH AS CINCINNATI MILACRON'S CIMTECH 410 (STAINLESS STEEL.)
4. ETCH OR STAMP THE DRAWING PART NUMBER ON NOTED SURFACE OF PART. USE .07" HIGH CHARACTERS.
EXAMPLE: D030182.



REV	DATE	DRWN BY	CHECKED	BY	DESCRIPTION
A	9/03	J. ROMIE			E030462/INITIAL RELEASE

UNLESS OTHERWISE SPECIFIED DIMENSIONS ARE IN INCHES TOLERANCES ARE: FRACTIONS DECIMALS ANGLES	APPROVALS	DATE	TITLE
± .XXX = .005	J. ROMIE	4/03	GIN GIN ETM RING FIXTURE

PART NO IDENTIFYING NO	NOMENCLATURE OR DESCRIPTION	MATERIAL SPECIFICATION	ITEM NO
D030110	GIN GIN ETM RING FIXTURE	ALUM 6061-T6	1

DO NOT SCALE DRAWING	MATERIAL NOTED	FINISH	SCALE	SHEET	OF
			1/1	1	1

1

2

3

4

5

6

7

8