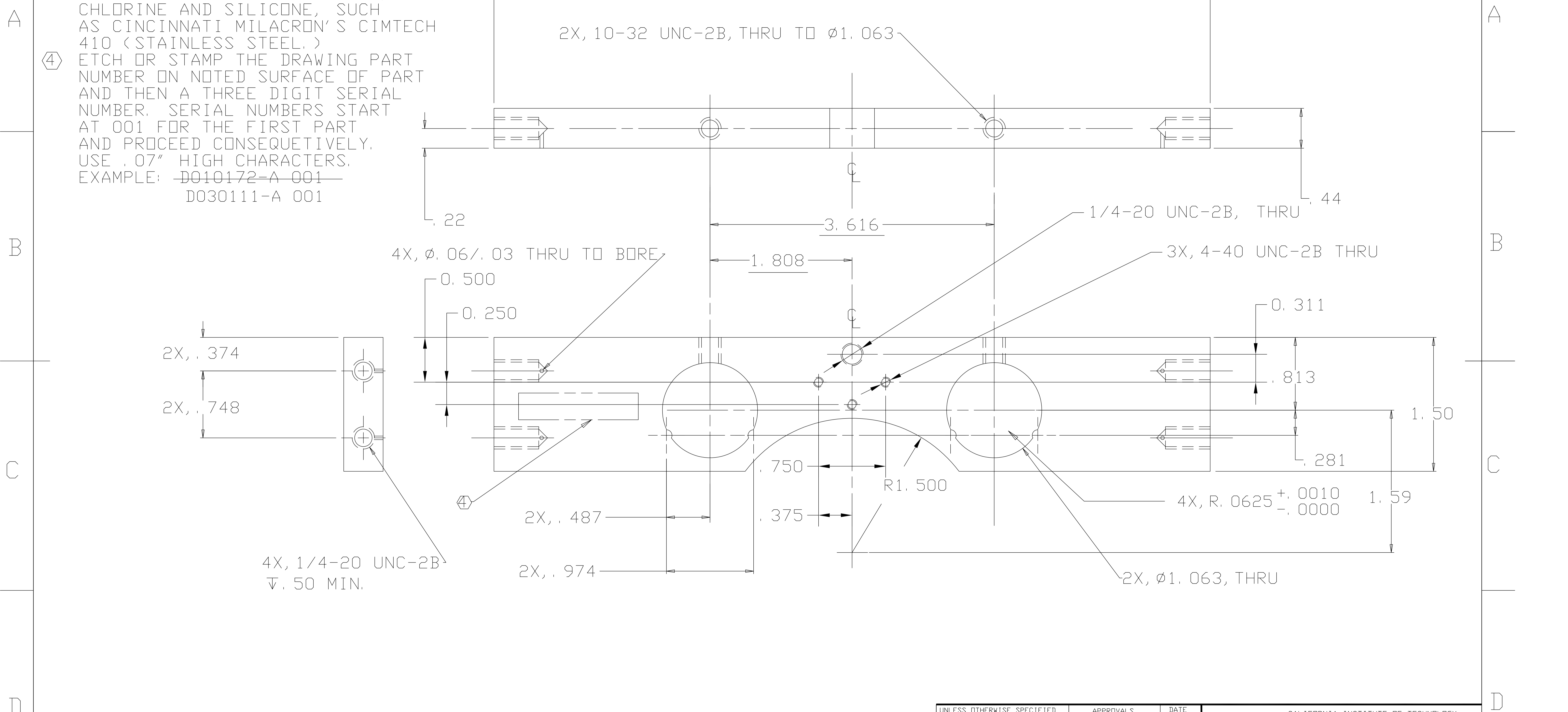


NOTES: (UNLESS OTHERWISE SPECIFIED)

1. DIMENSIONS IN INCHES.
  2. BREAK ALL SHARP EDGES.
  3. ALL MACHINING FLUIDS SHALL BE WATER SOLUABLE AND FREE OF SULFUR, CHLORINE AND SILICONE, SUCH AS CINCINNATI MILACRON'S CIMTECH 410 (STAINLESS STEEL.)
- ④ ETCH OR STAMP THE DRAWING PART NUMBER ON NOTED SURFACE OF PART AND THEN A THREE DIGIT SERIAL NUMBER. SERIAL NUMBERS START AT 001 FOR THE FIRST PART AND PROCEED CONSEQUETIVELY. USE .07" HIGH CHARACTERS. EXAMPLE: ~~D010172-A 001~~  
D030111-A 001

REV	DATE	DRAWN BY	CHECKED	DCC	DCN/DESCRIPTION
A	9/03	J. Romie			E030462/INITIAL RELEASE



UNLESS OTHERWISE SPECIFIED DIMENSIONS ARE IN INCHES TOLERANCES ARE: FRACTIONS    DECIMALS 0. XX=±0.01 0. XXX=±0.005 ANGLES=±0.5° DO NOT SCALE DRAWING	APPROVALS		DATE	LIGO CALIFORNIA INSTITUTE OF TECHNOLOGY MASSACHUSETTS INSTITUTE OF TECHNOLOGY TITLE GIN GIN ETM HEAD HOLDER, TOP DWG NO. D030111 SCALE NTS SHEET 1 OF 1	
	DRAWN	J. ROMIE	3/03		
	CHECKED				
NEXT ASSEMBLY	D030110	MATERIAL	300 SERIES SST	REV	A
FILE LOCATION	/home/dcc/docs/D030111.pdf	FINISH			