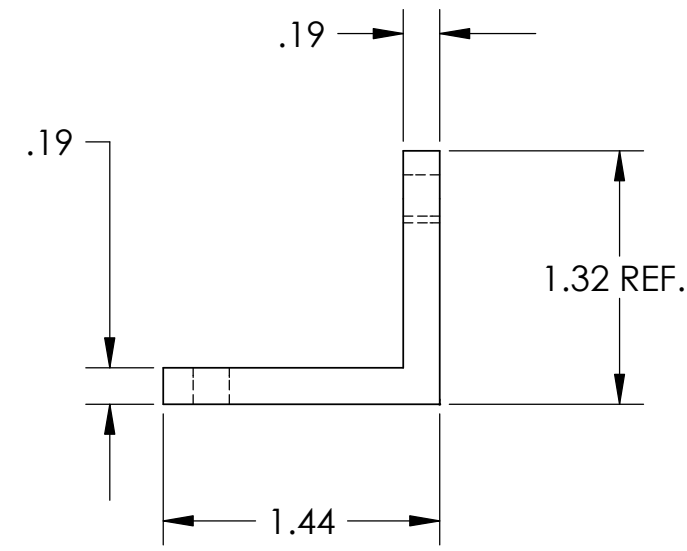
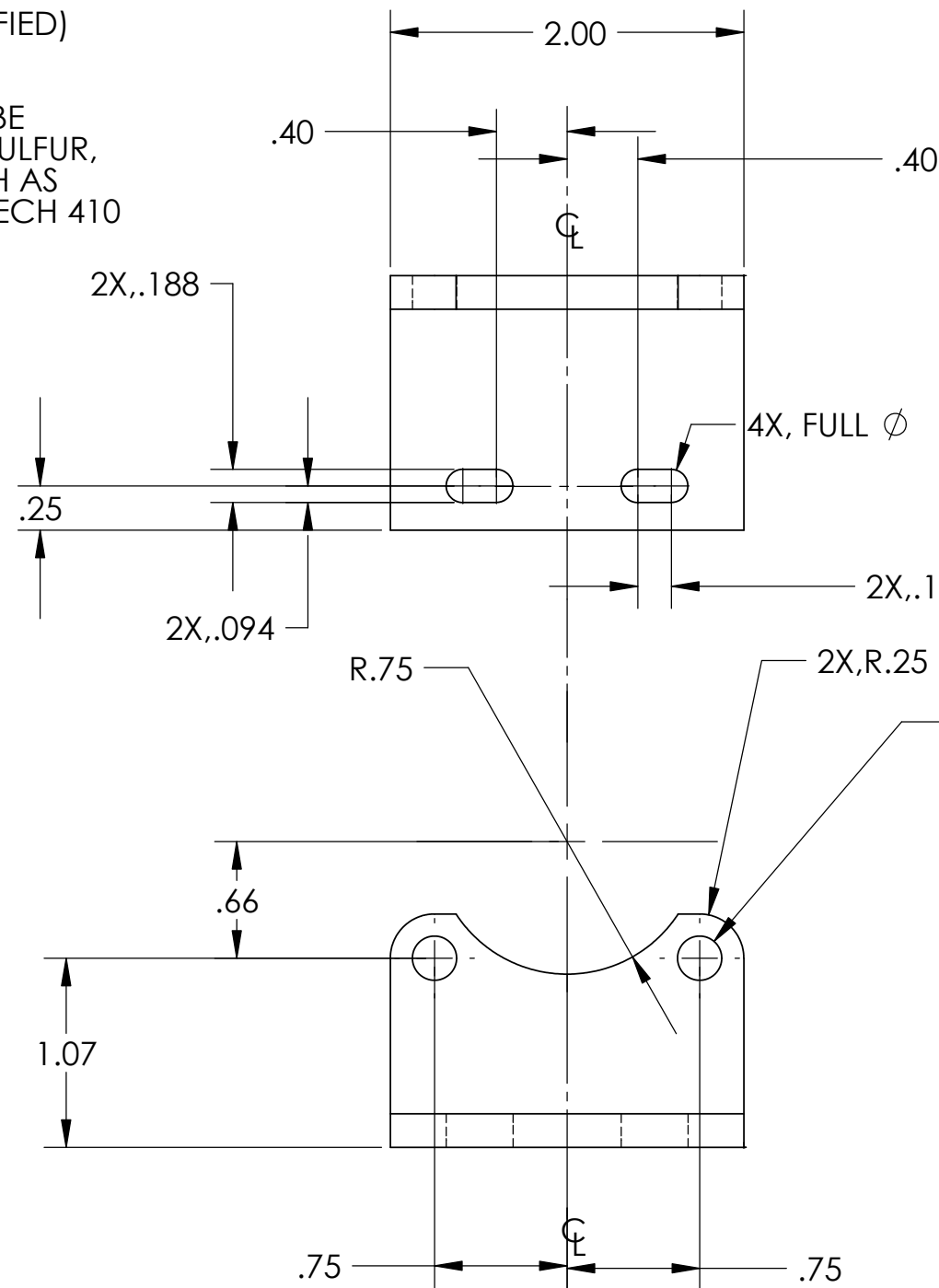


NOTES: (UNLESS OTHERWISE SPECIFIED)

1. DIMENSIONS IN INCHES.
2. BREAK ALL SHARP EDGES.
3. ALL MACHINING FLUIDS SHALL BE WATER SOLUBLE AND FREE OF SULFUR, CHLORINE AND SILICONE, SUCH AS CINCINNATI MILACRON'S CIMTECH 410 (STAINLESS STEEL.)



| REV. | DATE | DCN # | DRAWING TREE # |
|------|------|------------|----------------|
| A | 7/04 | E040303-00 | E030507-A |
| | | | |
| | | | |



D030015_Face_Bracket_2.step

| ITEM NO. | REQ. | SPARE | TOT. | PART NUMBER | DESCRIPTION | SUPPLIER |
|--|----------|----------|---------|---|-------------|--------------|
| | QUANTITY | | | | | |
| UNLESS OTHERWISE SPECIFIED: | | | | | | |
| DIMENSIONS ARE IN INCHES | | | | | | |
| TOLERANCES: .XX ±:0.01 .XXX ±:0.005 ANGULAR: ±0.5 DEG | | | | | | |
| MATERIAL ALUM 6061-T6 | | | | | | |
| FINISH NONE | | | | | | |
| PARTS LIST | | | | | | |
| DRAWN | | DATE | NAME | CALIFORNIA INSTITUTE OF TECHNOLOGY MASSACHUSETTS INSTITUTE OF TECHNOLOGY | | |
| CHECKED | | 1/03 | J.ROMIE | SYSTEM ADVANCED LIGO | | |
| | | | | SUB-SYSTEM SUSPENSIONS | | |
| | | | | NEXT ASSY MODE CLEANER SUSPENSION | | |
| | | | | PART NAME FACE BRACKET 2 | | |
| SIZE | | DWG. NO. | | REV | | |
| B | | D030015 | | A | | |
| SCALE: 1/1 | | | | | | SHEET 1 OF 1 |