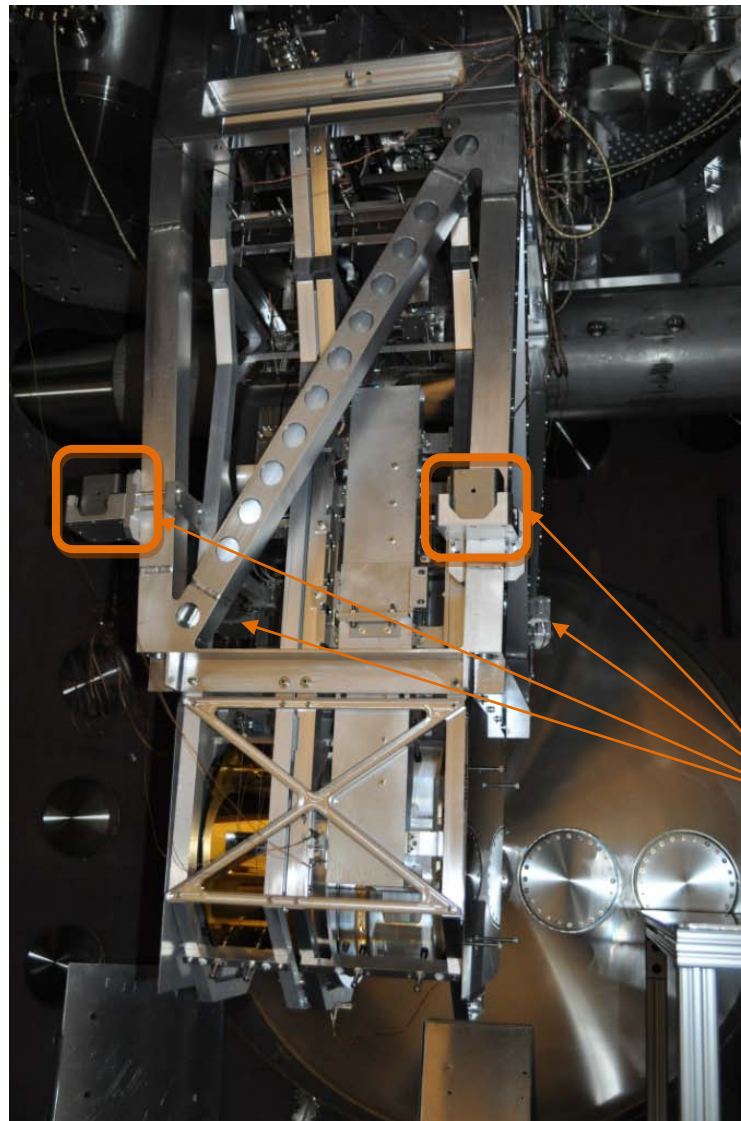


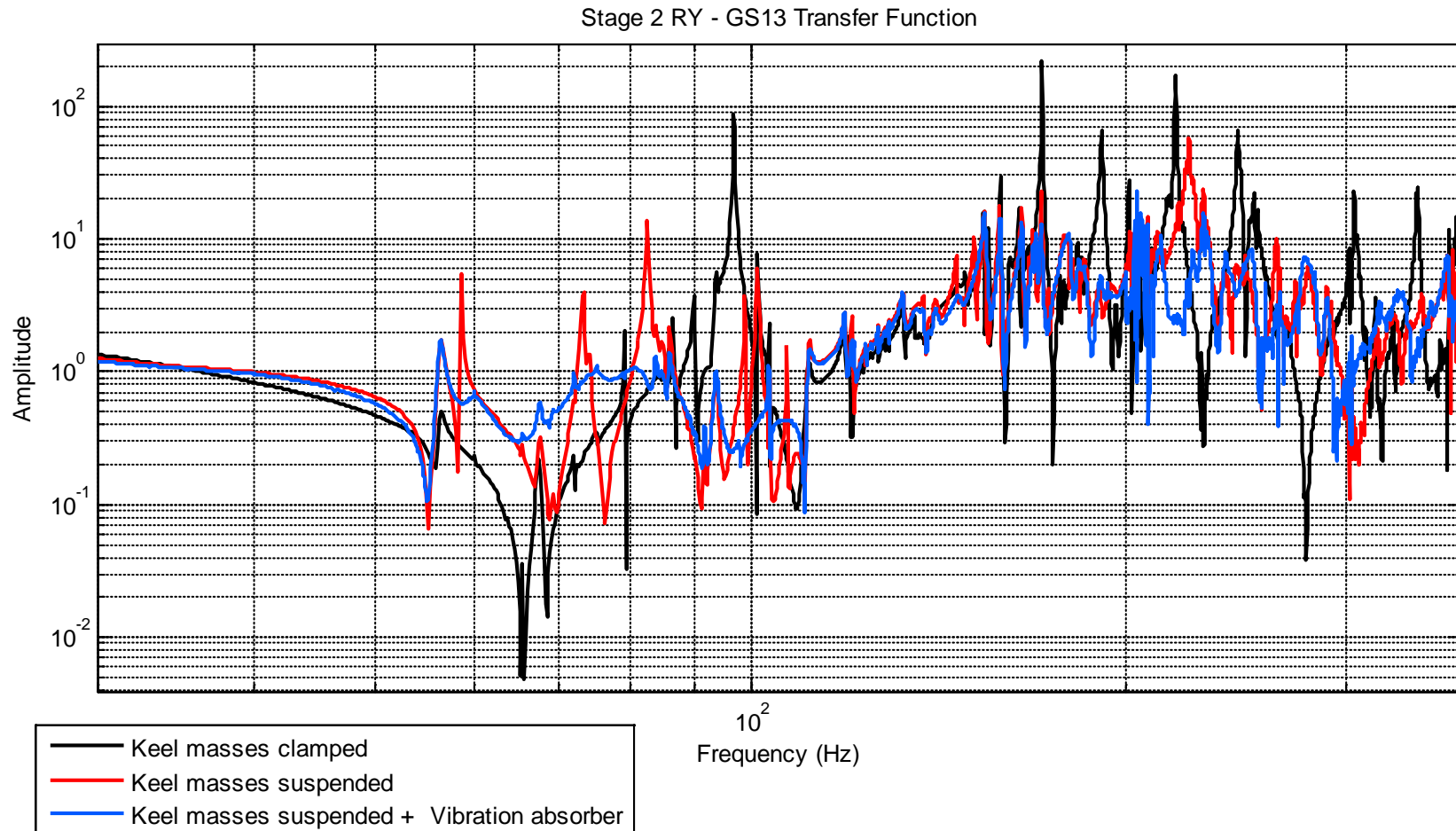
Vibration Absorbers location:



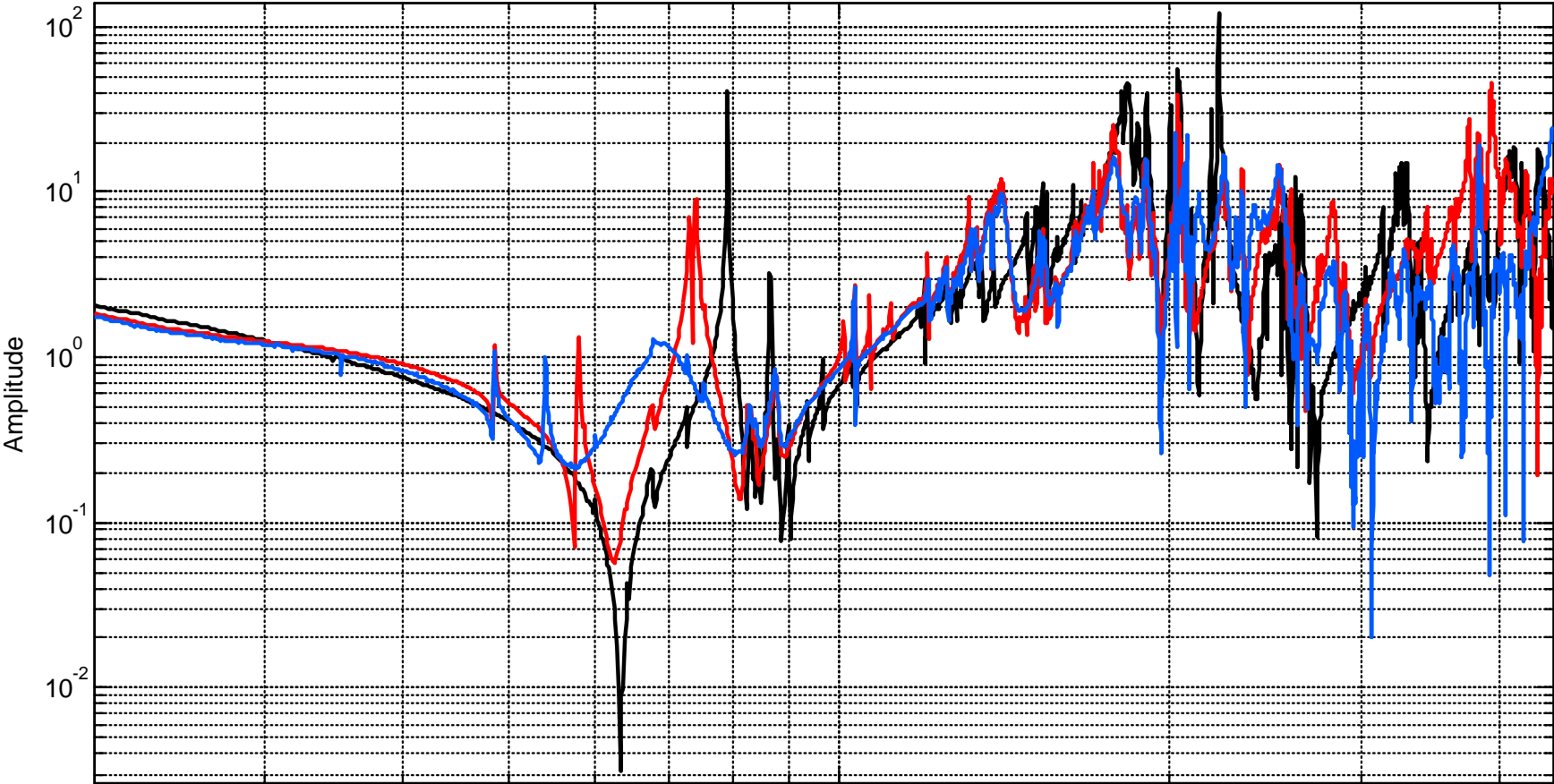
Transfer function before keel mass damper experiment (Black)

Transfer function after keel mass damper experiment (Red)

Transfer function with keel mass damper and vibration absorbers (Blue)



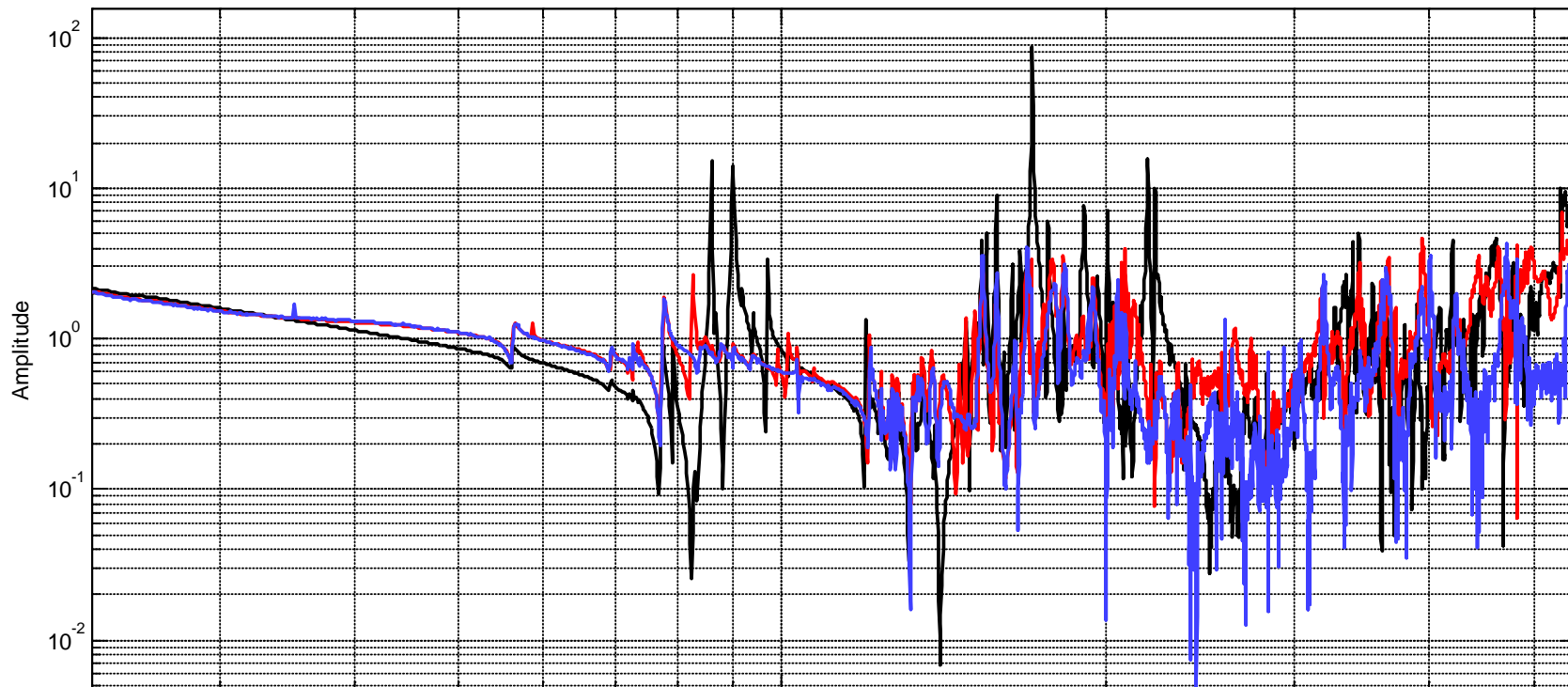
Stage 2 RX - GS13 Transfer Function



- Keel masses clamped
- Keel masses suspended
- Keel masses suspended + Vibration absorber

Frequency (Hz)

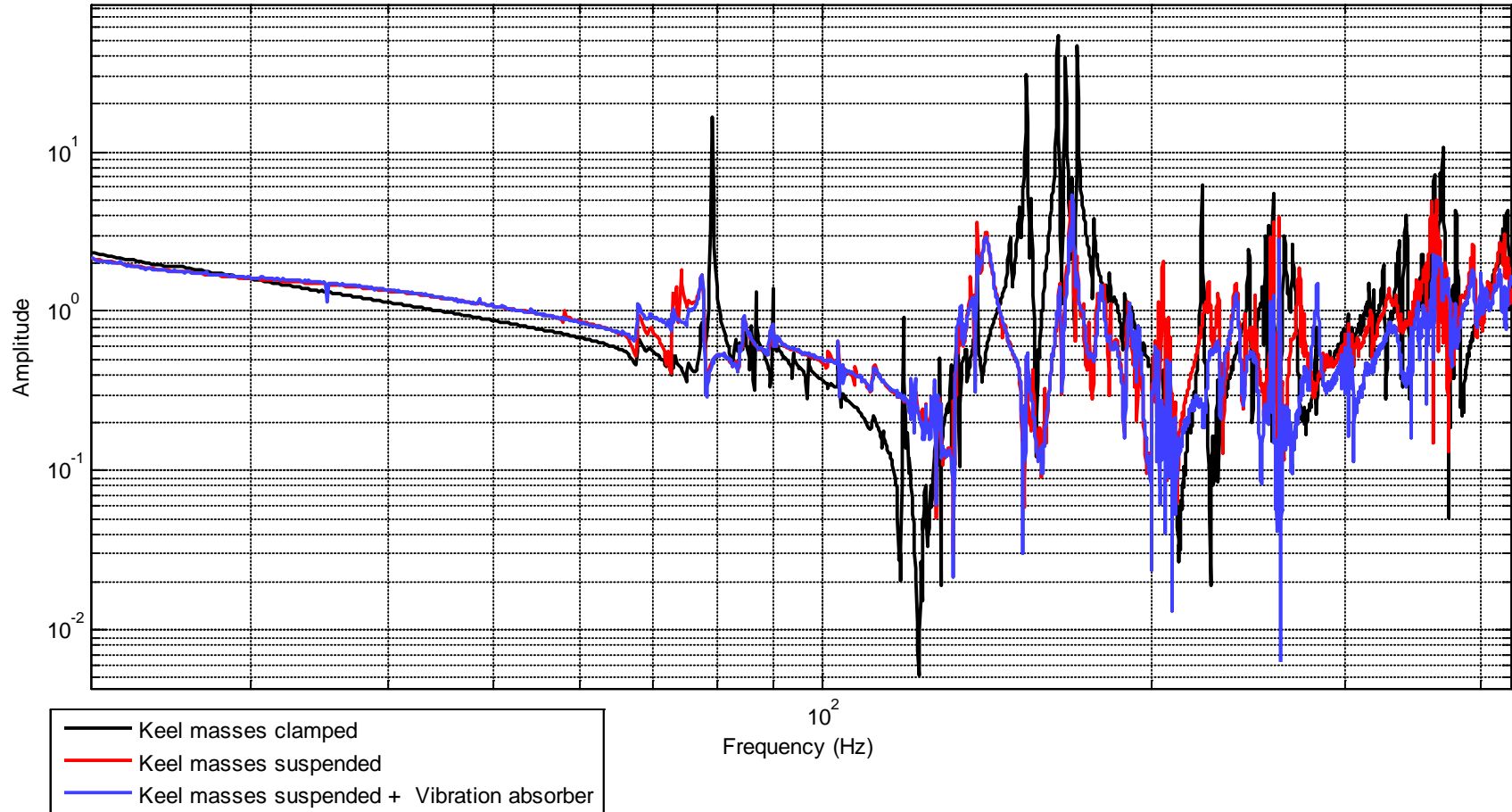
Stage 2 X - GS13 Transfer Function



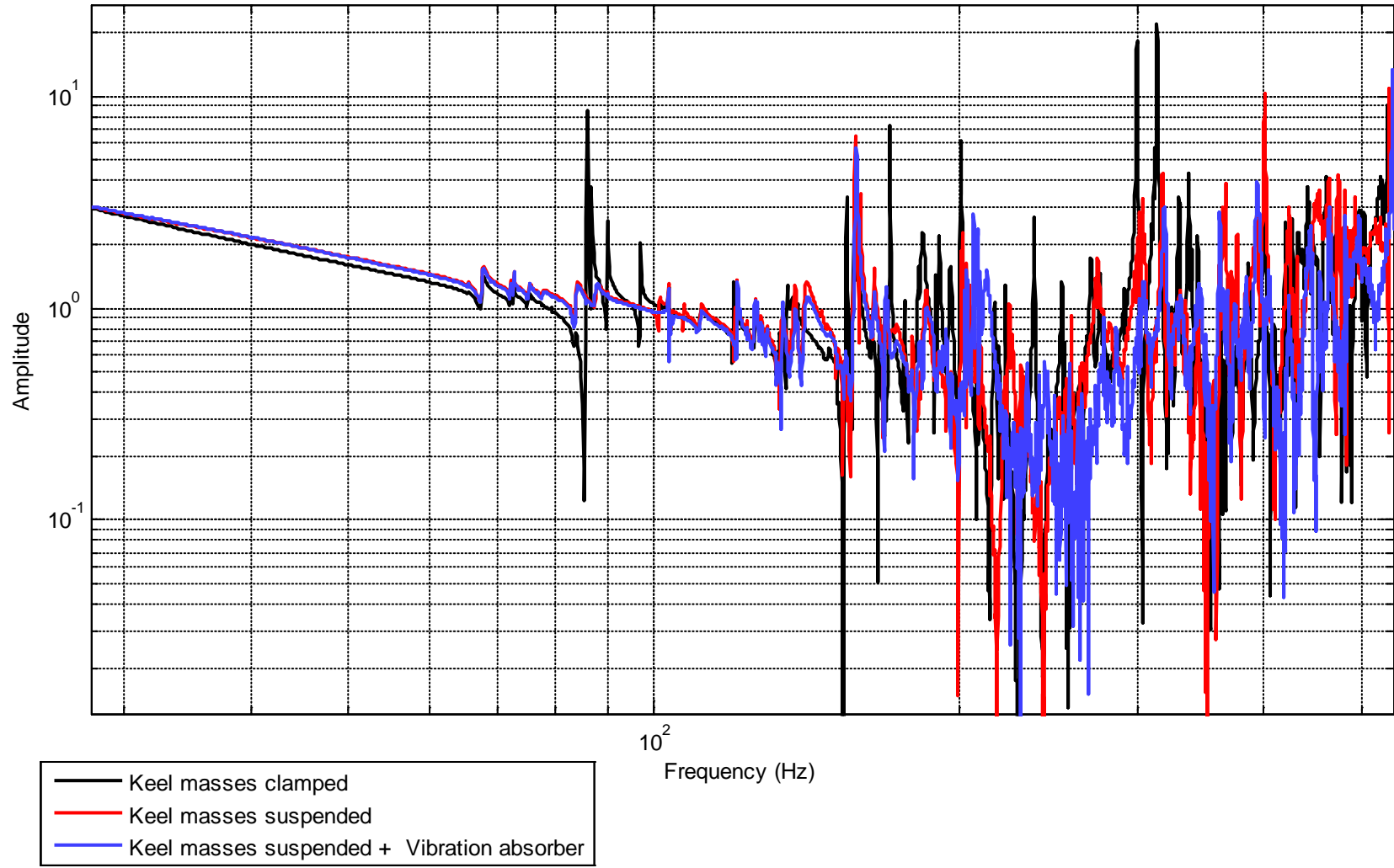
- Keel masses clamped
- Keel masses suspended
- Keel masses suspended + Vibration absorber

10^2
Frequency (Hz)

Stage 2 Y - GS13 Transfer Function



Stage 2 RZ - GS13 Transfer Function



Stage 2 Z - GS13 Transfer Function

