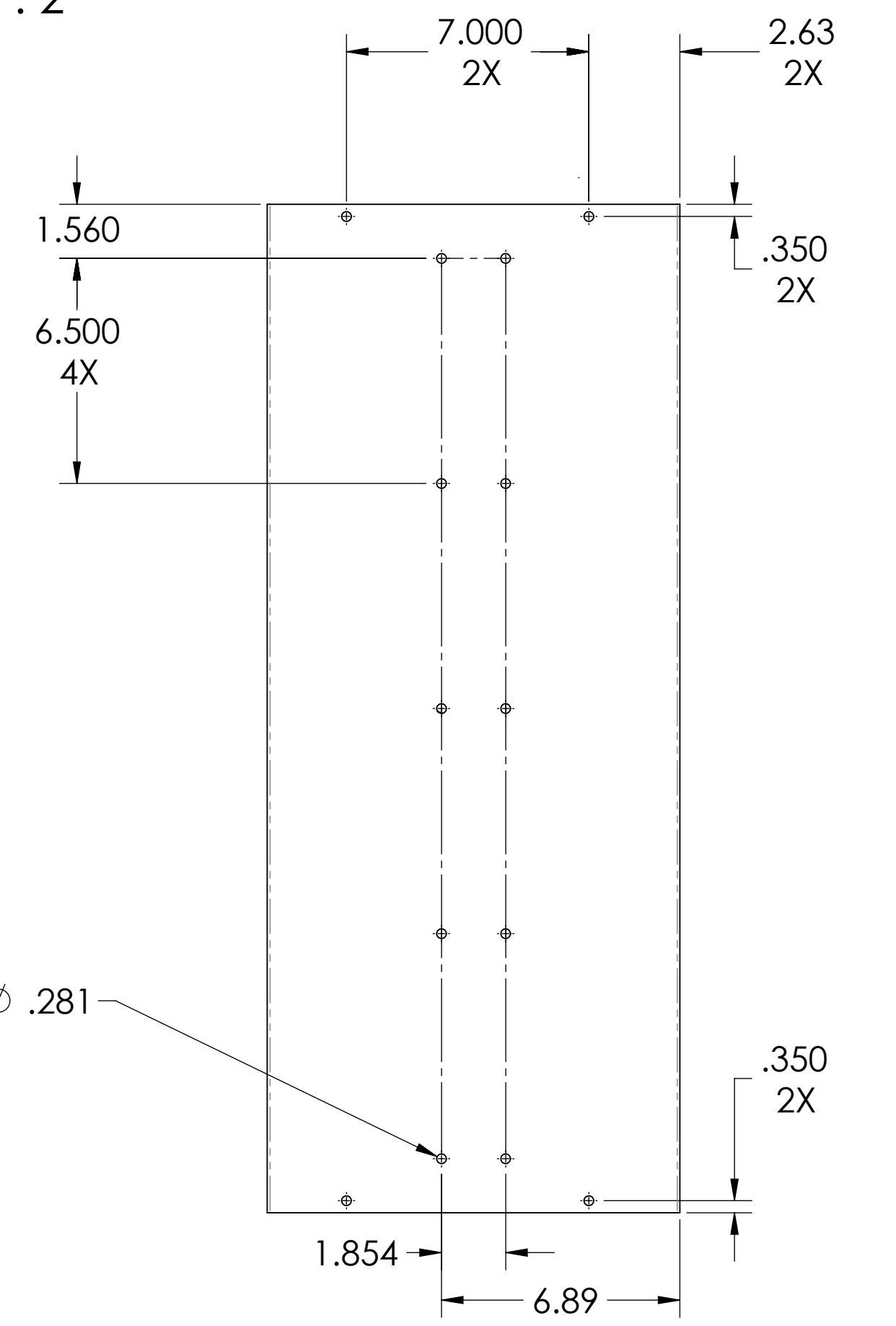
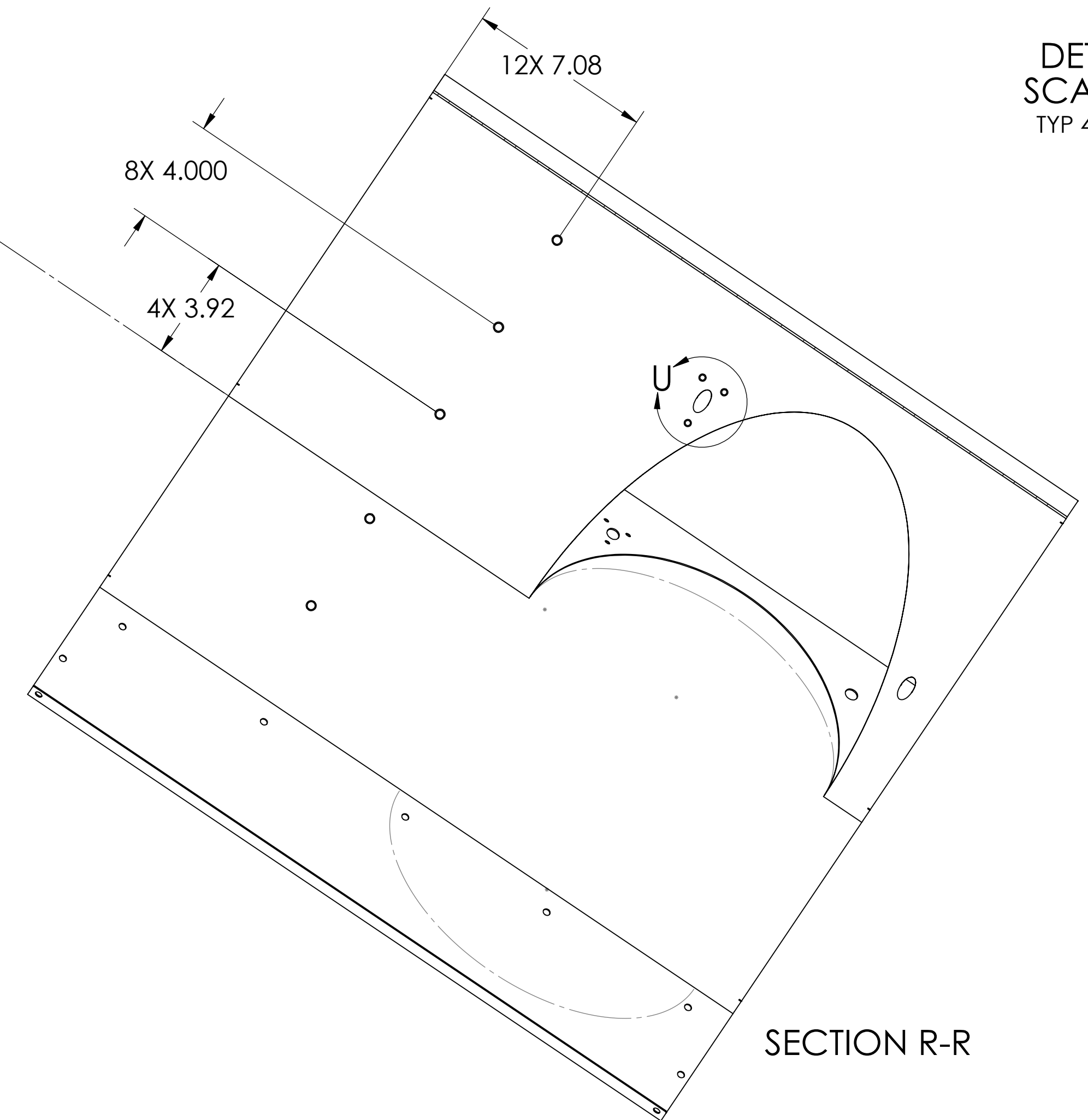
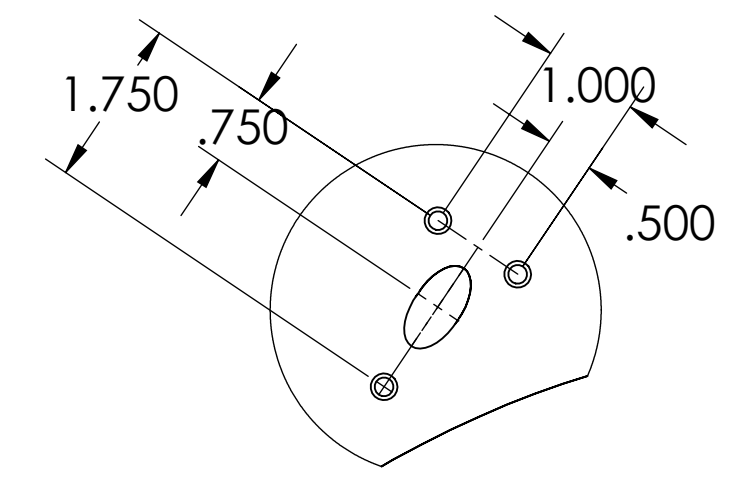
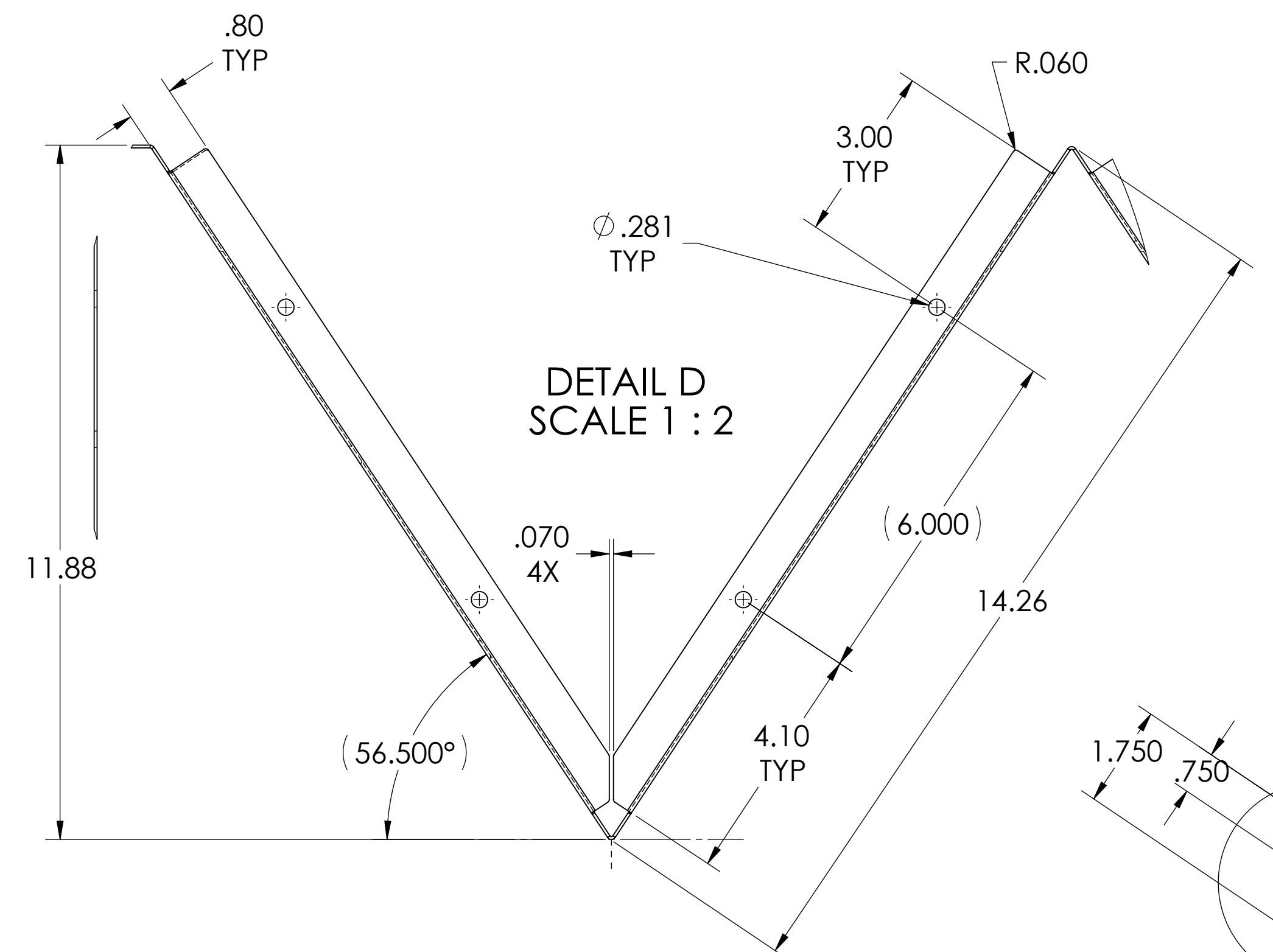
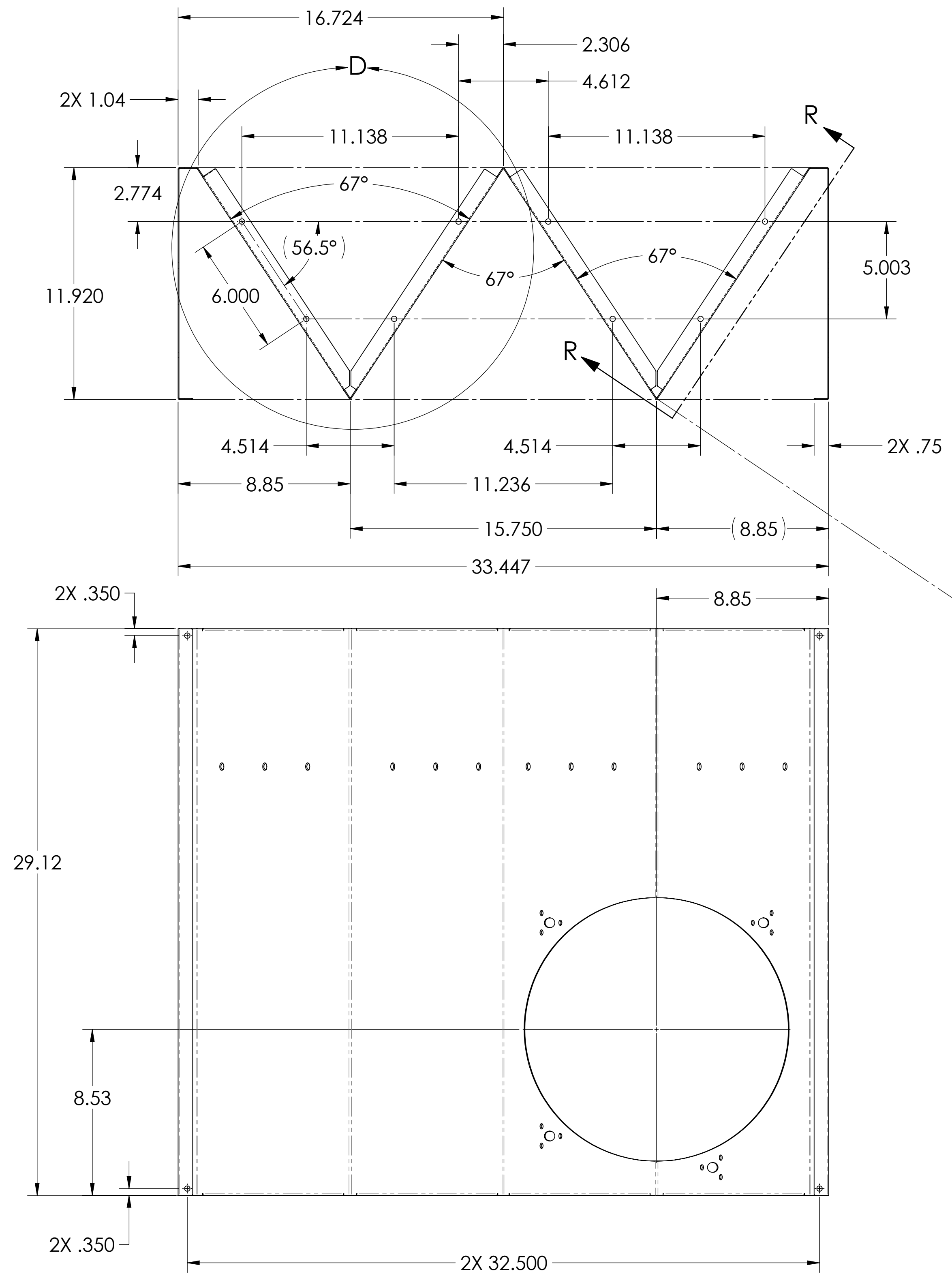


- 5. MAT'L: 18 GA ENAMELING STEEL -A424 TYPE I OR III.
 - 6. ALL EDGES TO BE SMOOTH AND FREE OFF BURRS.
 - 7. FINISH: PART WILL BE PORCELAIN COATED IN ACCORDANCE WITH LIGO SPECIFICATION E1000083
 - 8. ALL HOLE AREAS SHALL BE MASKED WITHIN .63 DIA PRIOR PORCELAIN COATED. BOTH SIDES
- SEE CAD FILE # D1002357 TO GENERATE ELLIPSE CURVES

REV.	DATE	DCN #	DRAWING TREE #
v1	03 JAN 2011	E1000868	

PART NO.	DESCRIPTION	SEE SHEET NO.
D1002357-01	ACB 1 HOLE RIGHT-QPD SKIN	1, 2 & 3
D1002357-02	ACB 1 HOLE LEFT-QPD SKIN	4 & 5
D1002357-03	ACB 1 HOLE RIGHT NO QPD SKIN	6 & 7
D1002357-04	ACB 1 HOLE LEFT NO QPD SKIN	8 & 9



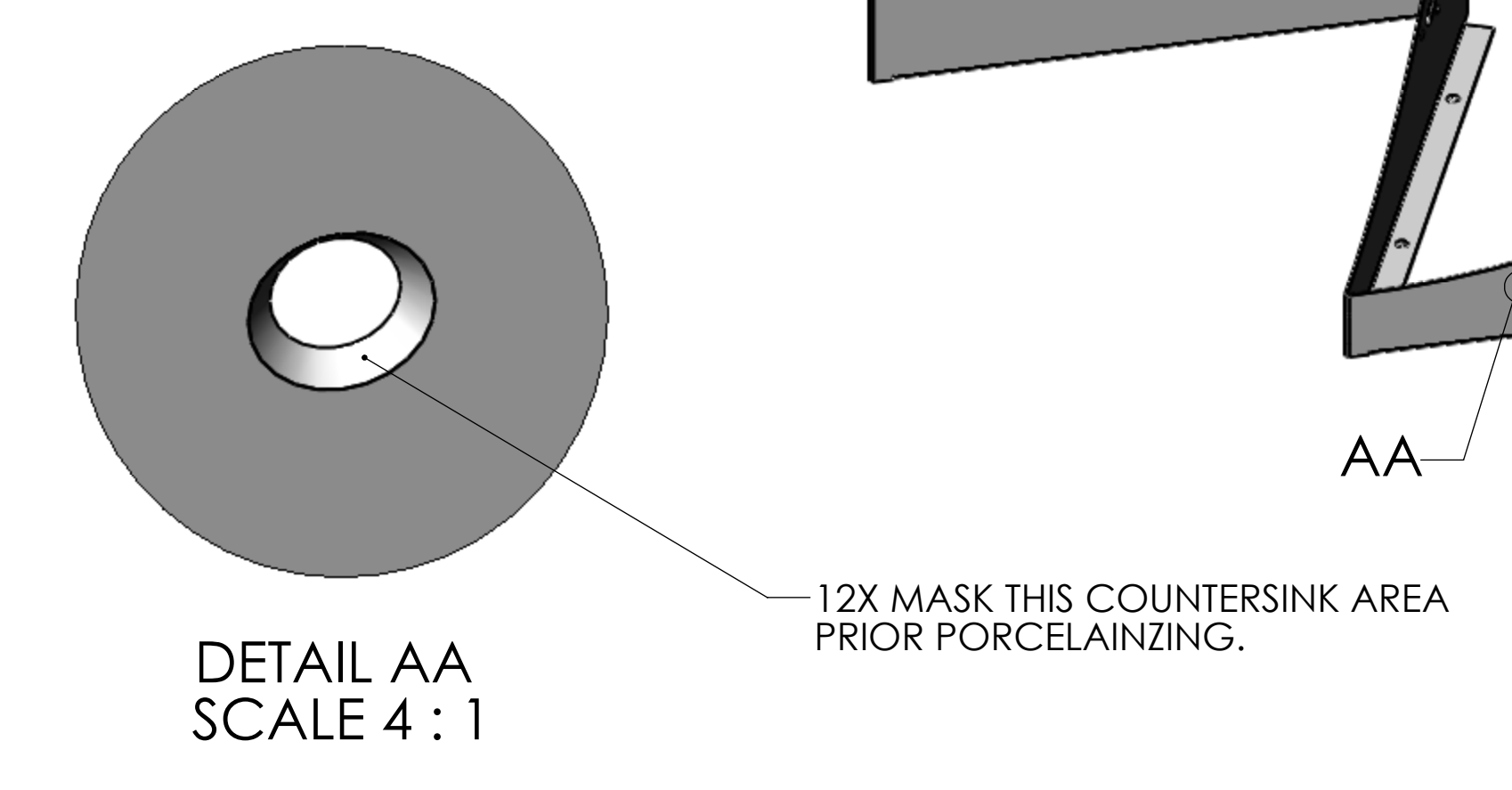
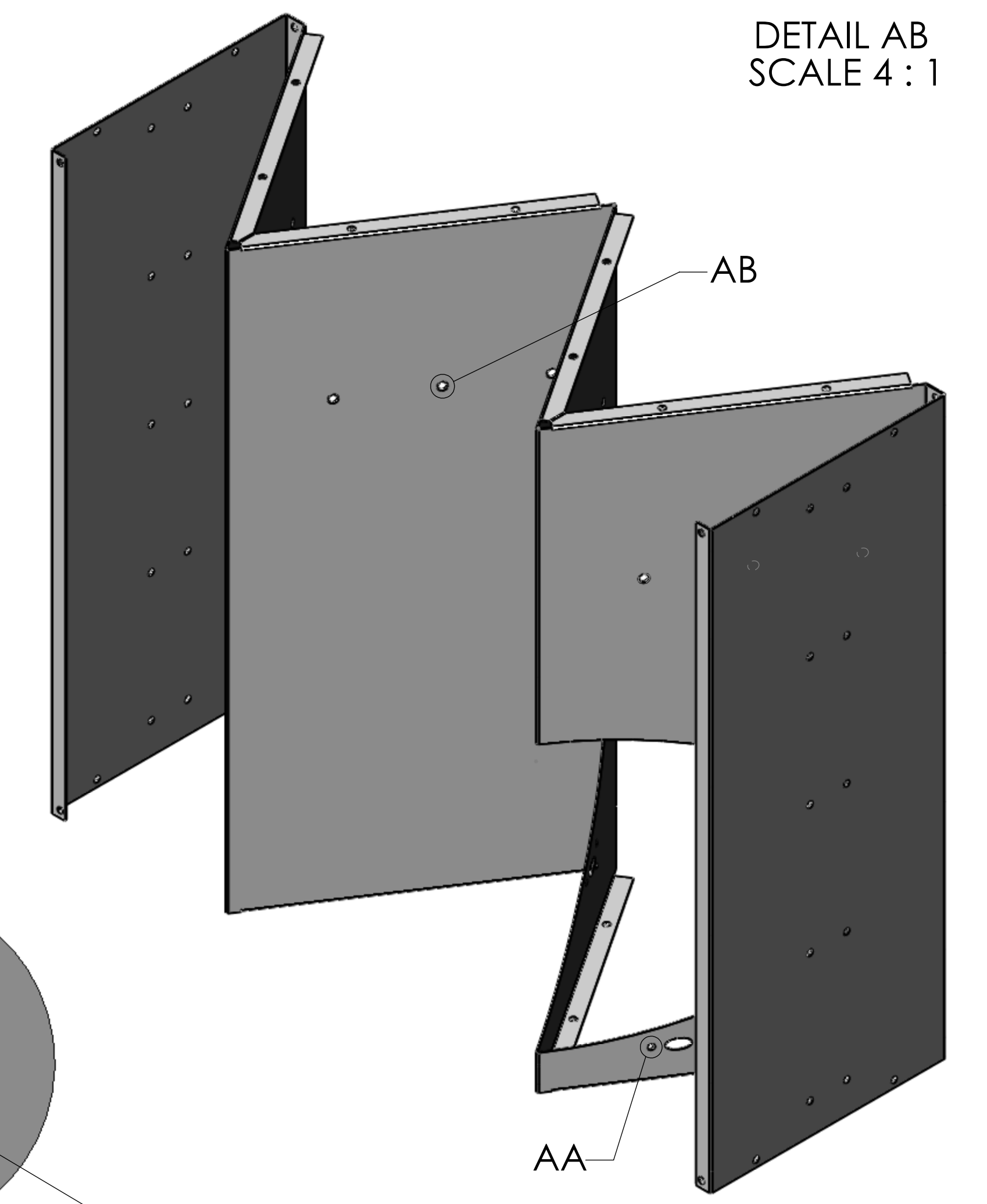
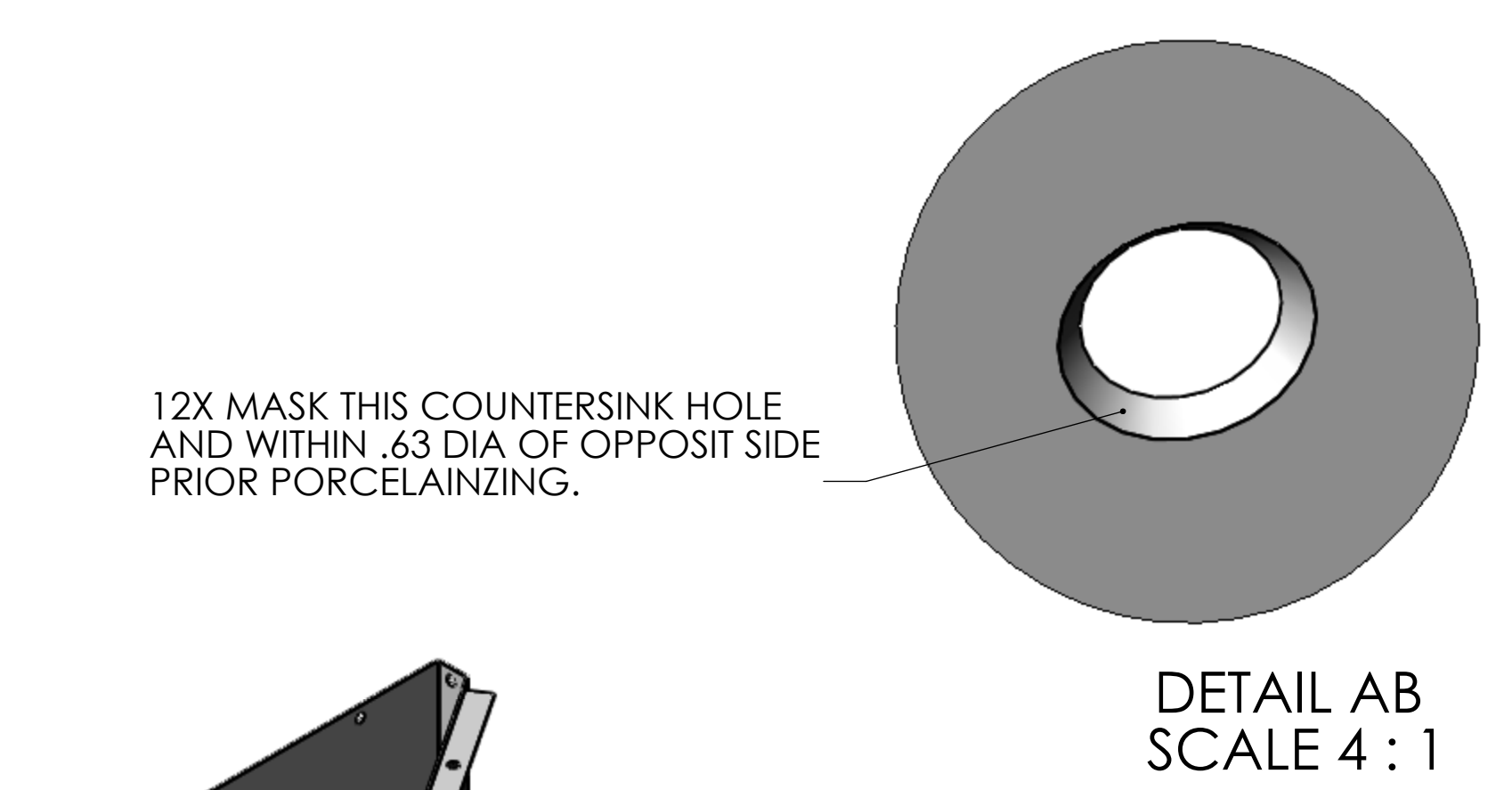
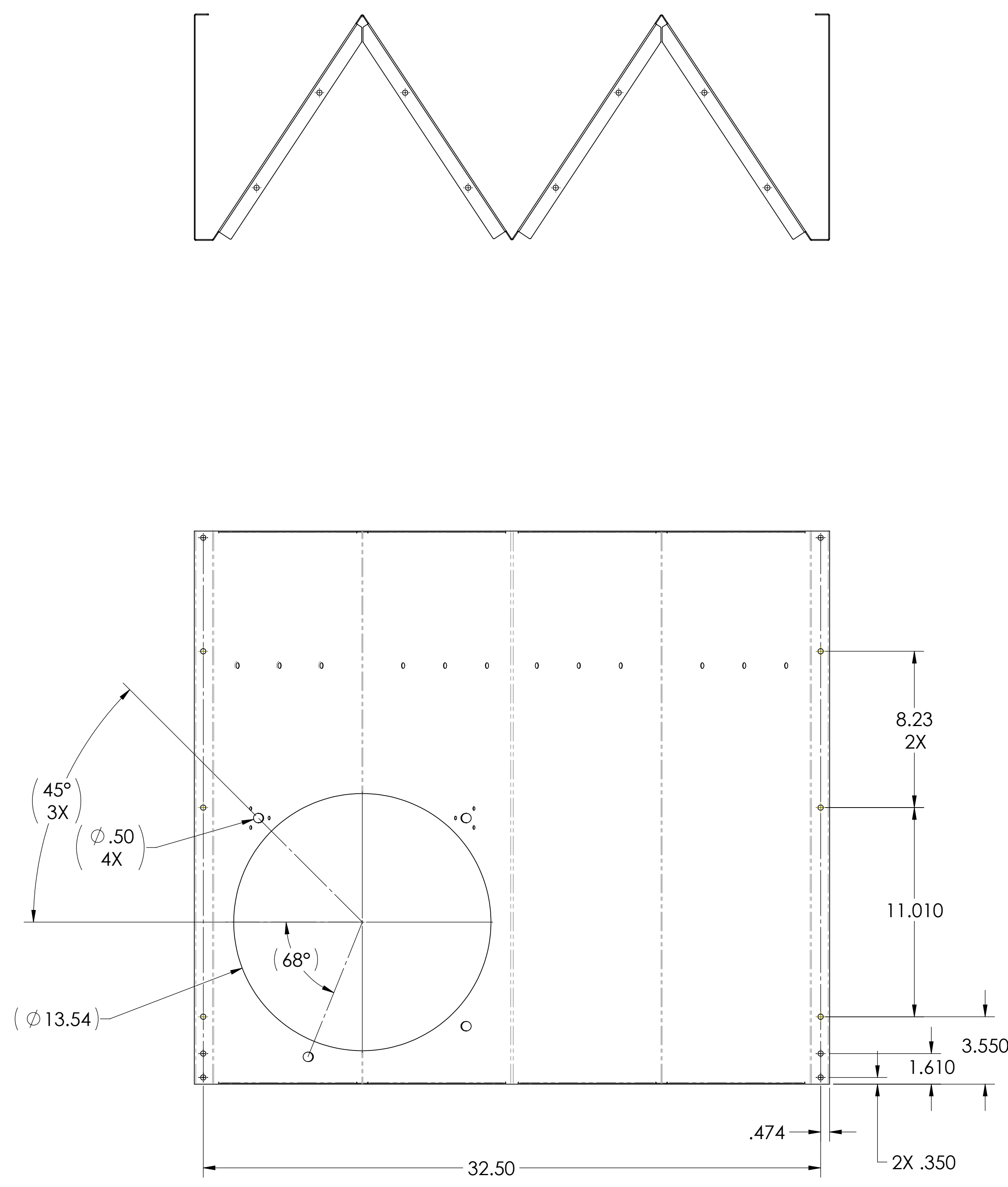
D1002357-01 ONE HOLE RIGHT QPD SKIN

NOTES AND TOLERANCES: (UNLESS OTHERWISE SPECIFIED)	
1. INTERPRET DRAWING PER ASME Y14.5-1994.	
2. REMOVE ALL SHARP EDGES, R.02 MIN.	
3. DO NOT SCALE FROM DRAWING.	
4. ALL MACHINING FLUIDS MUST BE FULLY SYNTHETIC, FULLY WATER SOLUBLE AND FREE OF SULFUR, SILICONE, AND CHLORINE.	
DIMENSIONS ARE IN INCHES	TOLERANCES: .XX ± .02 .XXX ± .010
MATERIAL	FINISH
ENAMEL STL A424 TYPE I	SEE NOTE 7
ANGULAR ± 1.0°	

CALIFORNIA INSTITUTE OF TECHNOLOGY MASSACHUSETTS INSTITUTE OF TECHNOLOGY	
SYSTEM	SUB-SYSTEM
ADVANCED LIGO	AOS
NEXT ASSY	D1002356

PART NAME			
ACB ONE HOLE SKIN			
DESIGNER	N.Nguyen	20 Dec 2010	SIZE
DRAFTER	N. NGUYEN	20 DEC 2010	DWG. NO.
CHECKER	M. SMITH	10 JAN 2011	D
APPROVAL	D. COYNE	20 JAN 2011	D1002357
SCALE: 1:4	PROJECTION:	SHEET 1 OF 9	

D1002357_AudiGO_AOS_SLC_ARM_Covily_Bottle_1 Hole Skin_PART.PDM_REV.X-006_DRAWING.PDM_REV.X-006



D1002357-01
ONE HOLE RIGHT QPD SKIN

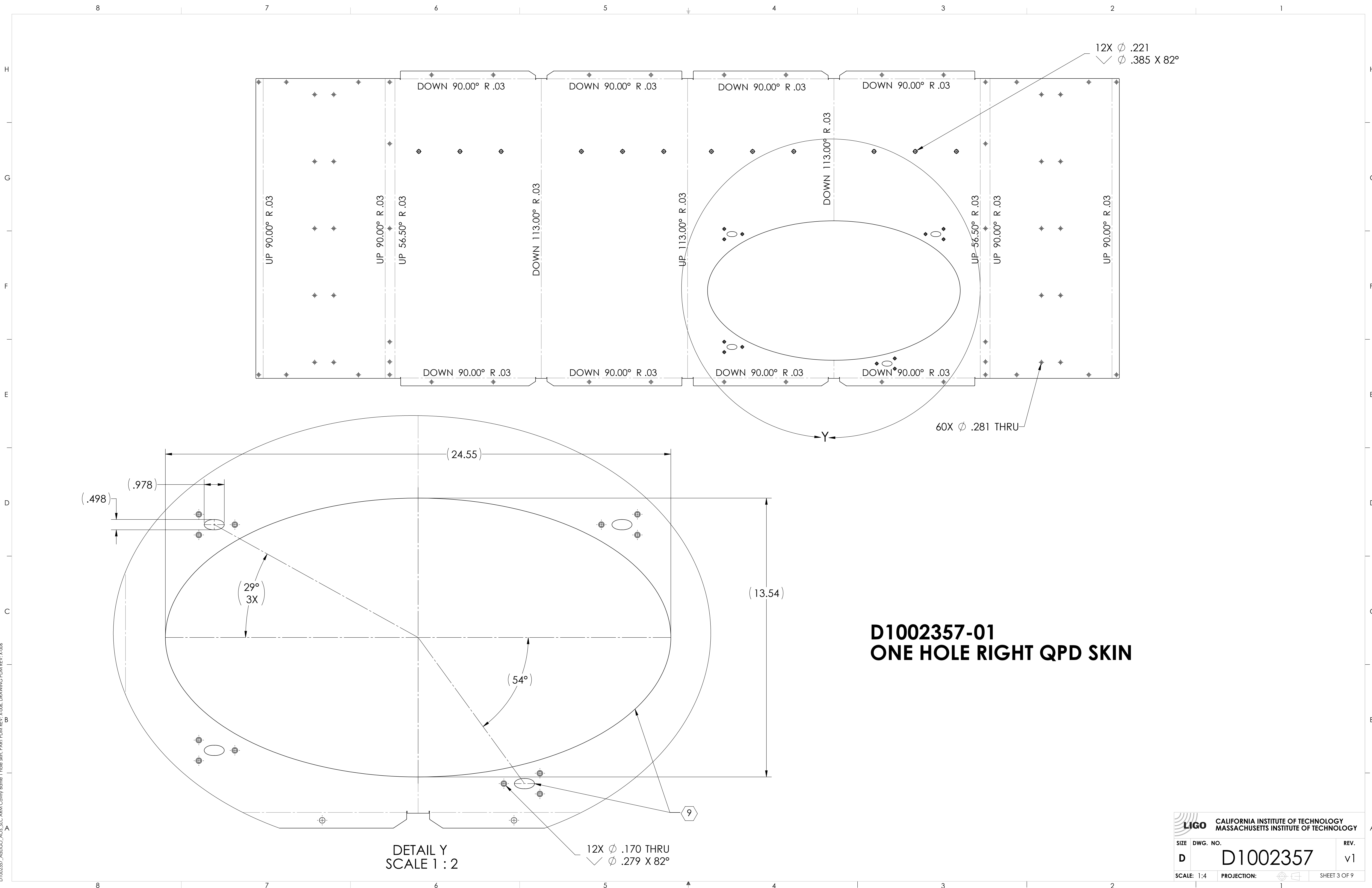
ITEM NO.	PART NUMBER	DESCRIPTION	MATERIAL	REQ	SPARE	TOTAL
1	D1002357-01	ACB 1 HOLE RIGHT-QPD SKIN	ENAMEL STL A424 TYPE I	1		1

LIGO CALIFORNIA INSTITUTE OF TECHNOLOGY
MASSACHUSETTS INSTITUTE OF TECHNOLOGY

SIZE DWG. NO. **D1002357** REV. **v1**

SCALE: 1:4 PROJECTION: SHEET 2 OF 9

D1002357_AduLIGO_ACS_SLC_ARM_Covily_Bottle_1 Hole Skin PART PDM REV. X-006 DRAWING PDM REV. X-006

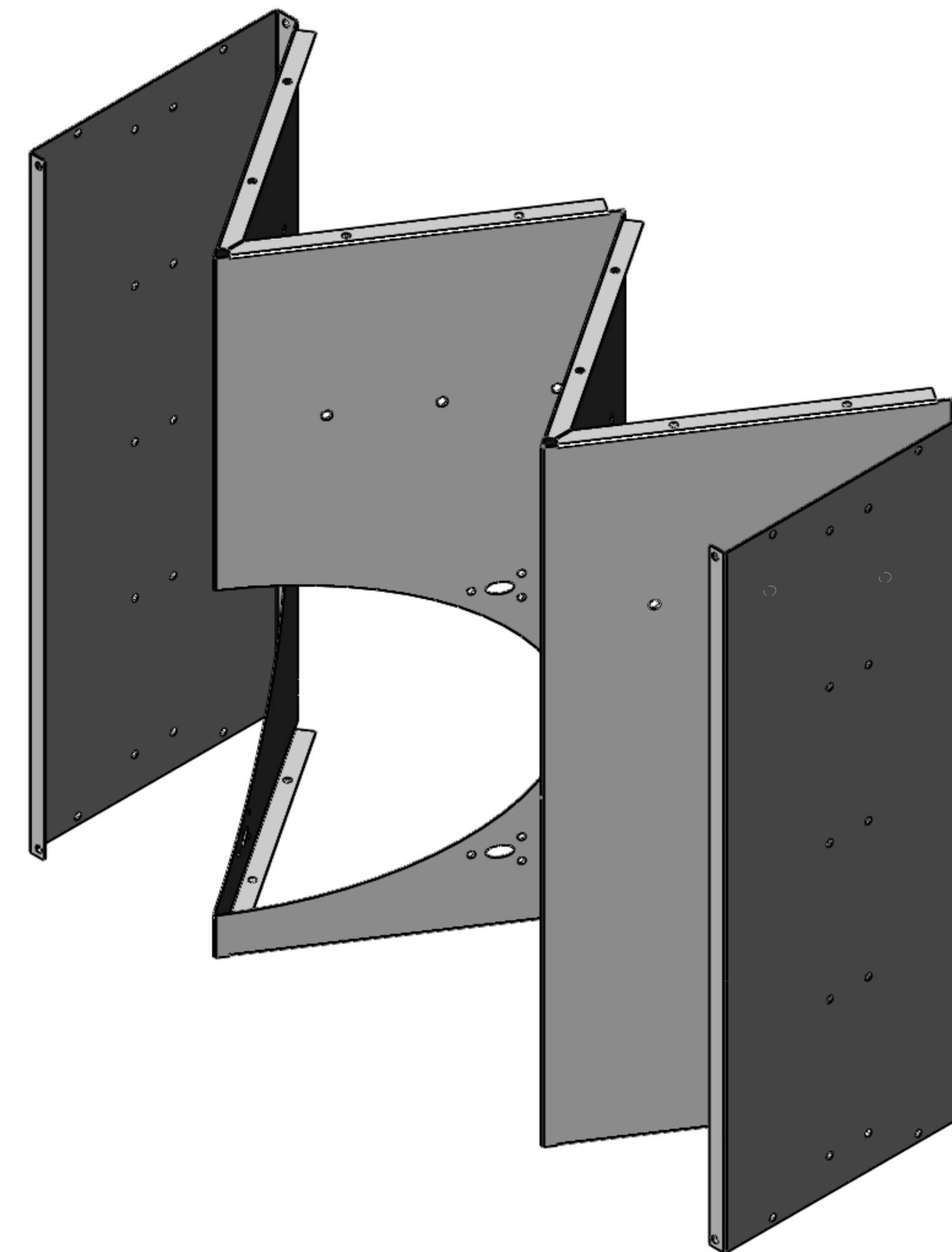
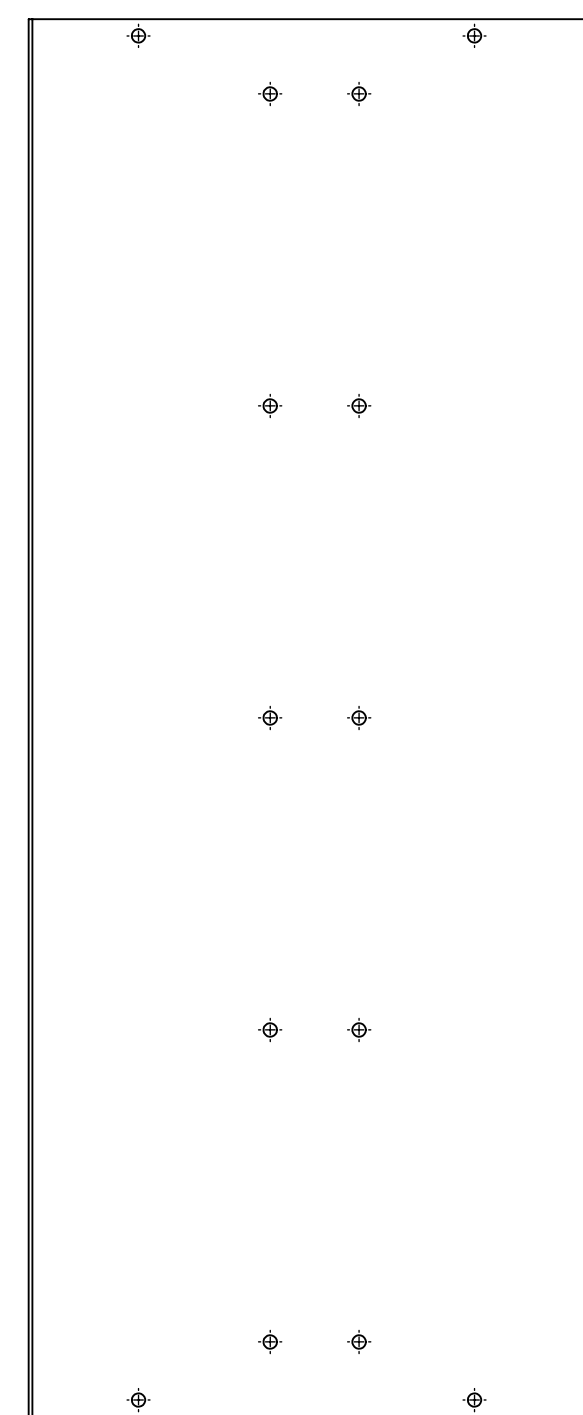
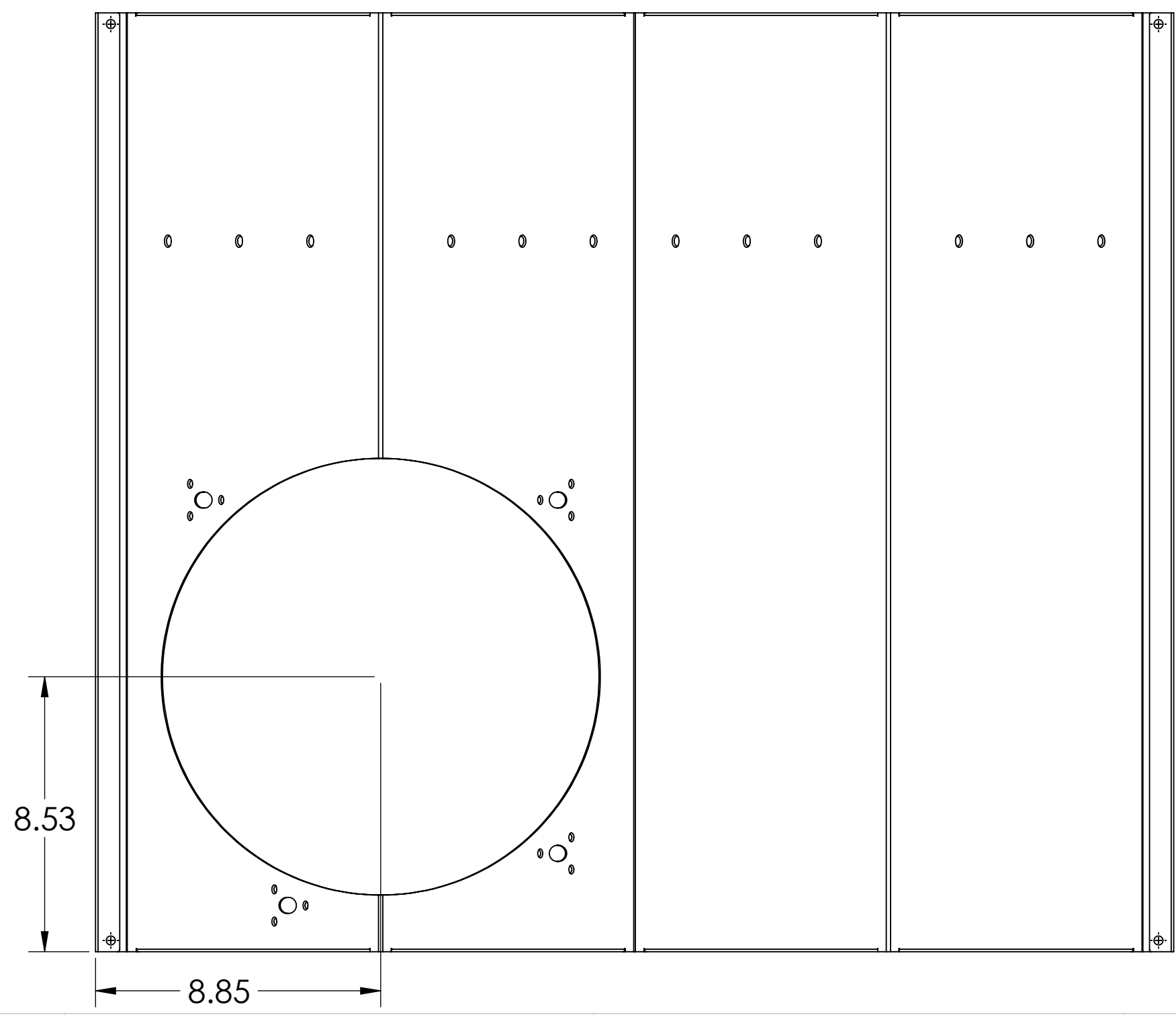
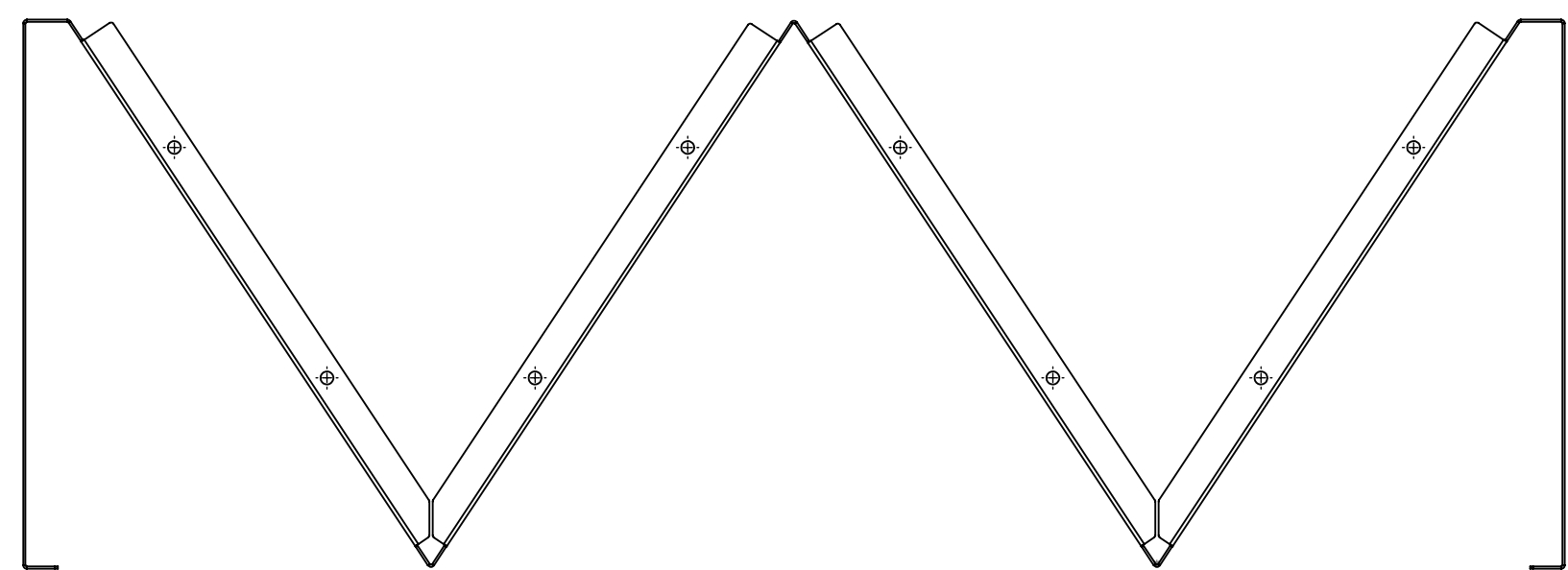
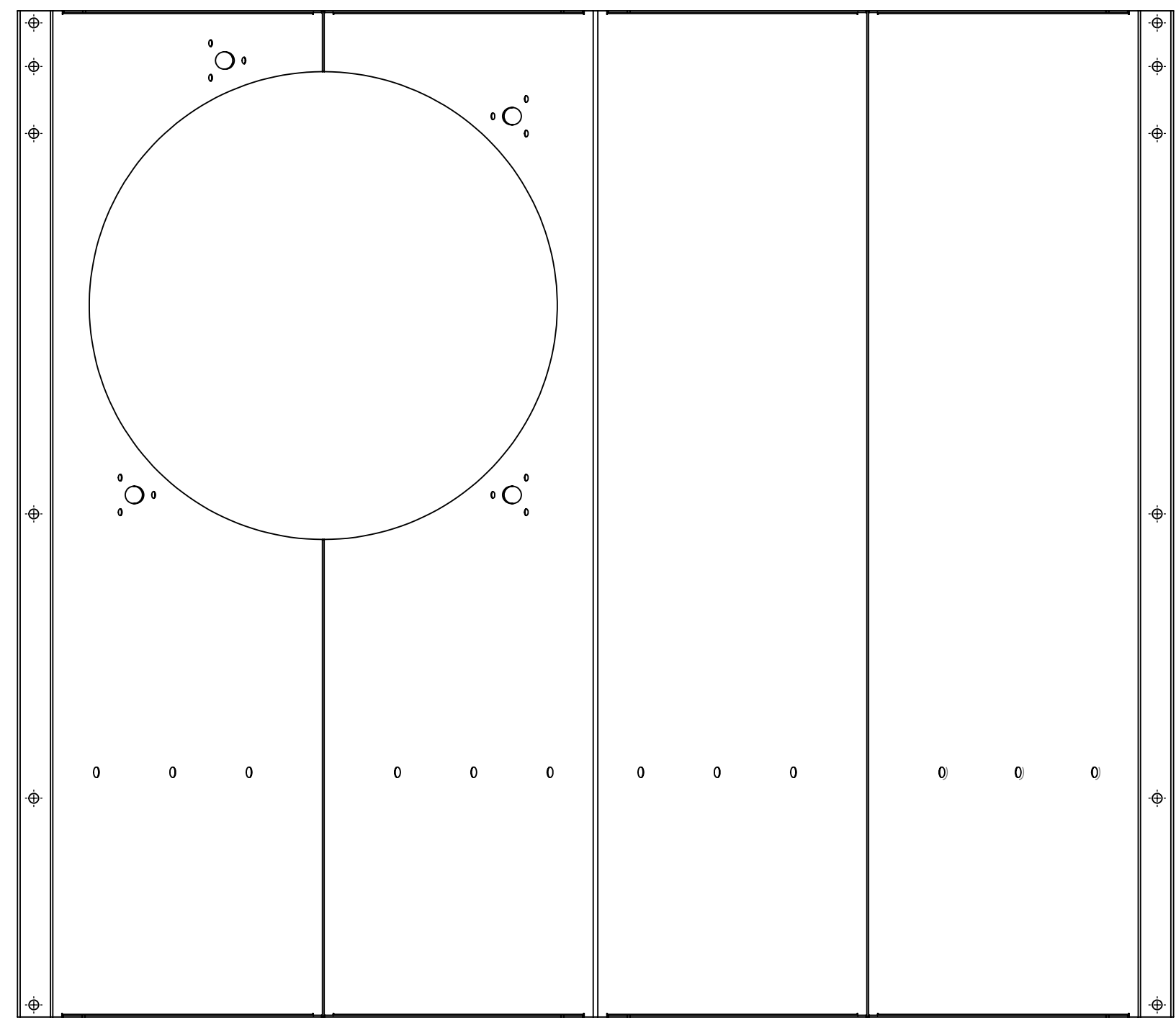


**D1002357-01
ONE HOLE RIGHT QPD SKIN**

DETAIL Y
SCALE 1 : 2

CALIFORNIA INSTITUTE OF TECHNOLOGY MASSACHUSETTS INSTITUTE OF TECHNOLOGY	
SIZE DWG. NO.	REV.
D D1002357	v1
SCALE: 1:4	PROJECTION:
SHEET 3 OF 9	

D1002357_AudiGO_ACS_SLC_ARM_Cavity_Baffle_1 Hole_Skin_PART_PDM_REV_X.006_DRAWING_PDM_REV_X.006



D1002357-02
ONE HOLE LEFT QPD SKIN
SEE D1002357-01 FOR DIMS NOT SHOWN

ITEM NO.	PART NUMBER	DESCRIPTION	MATERIAL	REQ	SPARE	TOTAL
1	D1002357-02	ACB 1 HOLE LEFT-QPD SKIN	ENAMEL STL A424 TYPE I	1		1

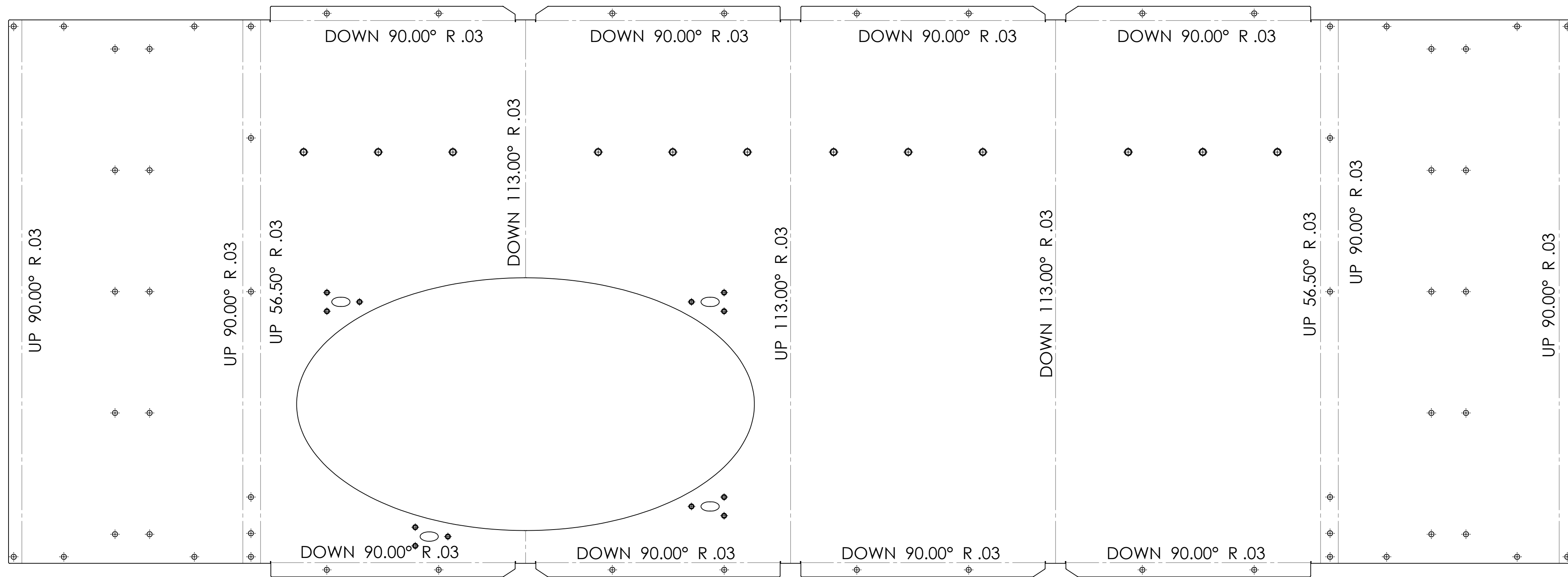
PARTS LIST

LIGO CALIFORNIA INSTITUTE OF TECHNOLOGY
 MASSACHUSETTS INSTITUTE OF TECHNOLOGY



SIZE DWG. NO. **D1002357** REV. **v1**

SCALE: 1:4 PROJECTION: SHEET 4 OF 9

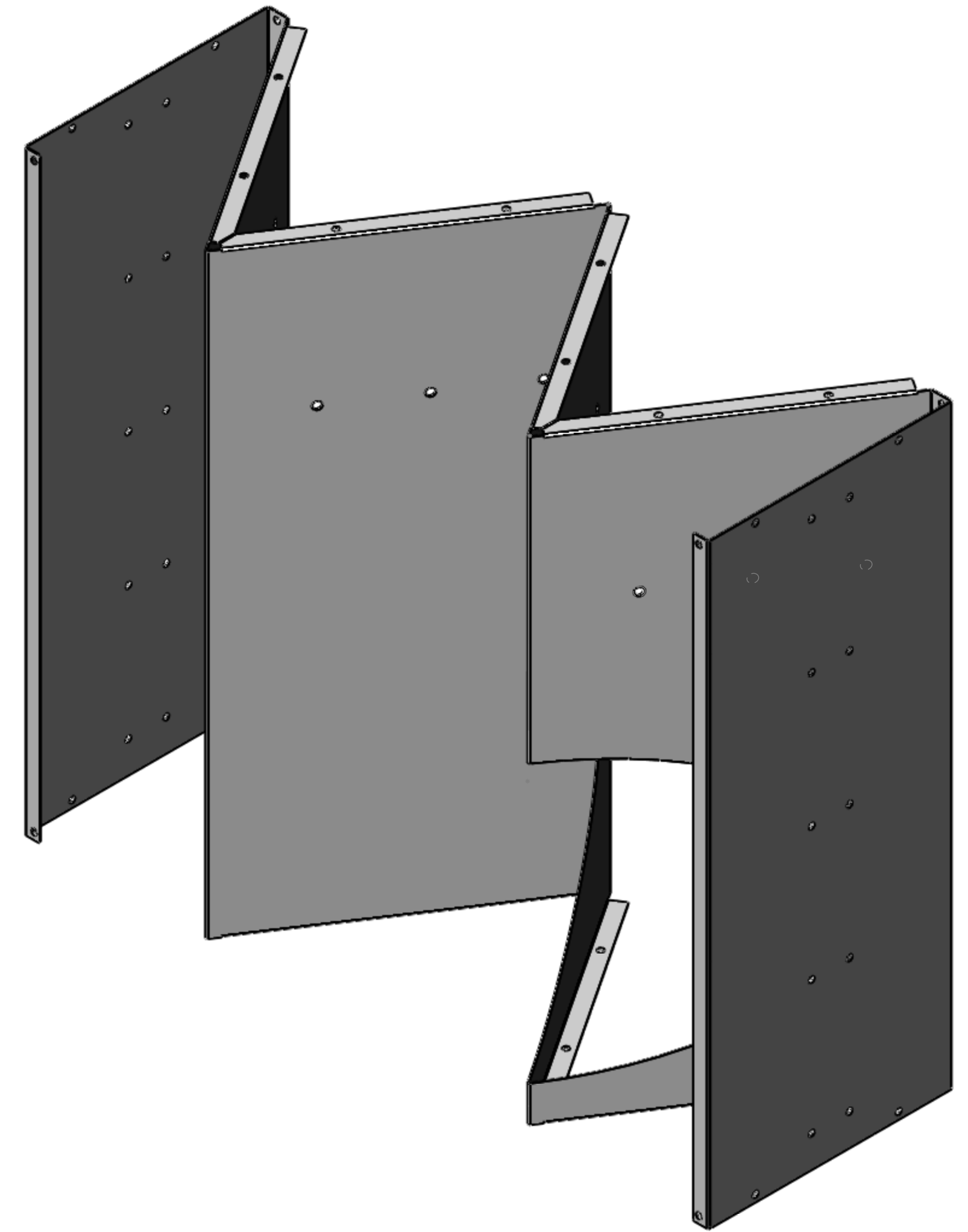
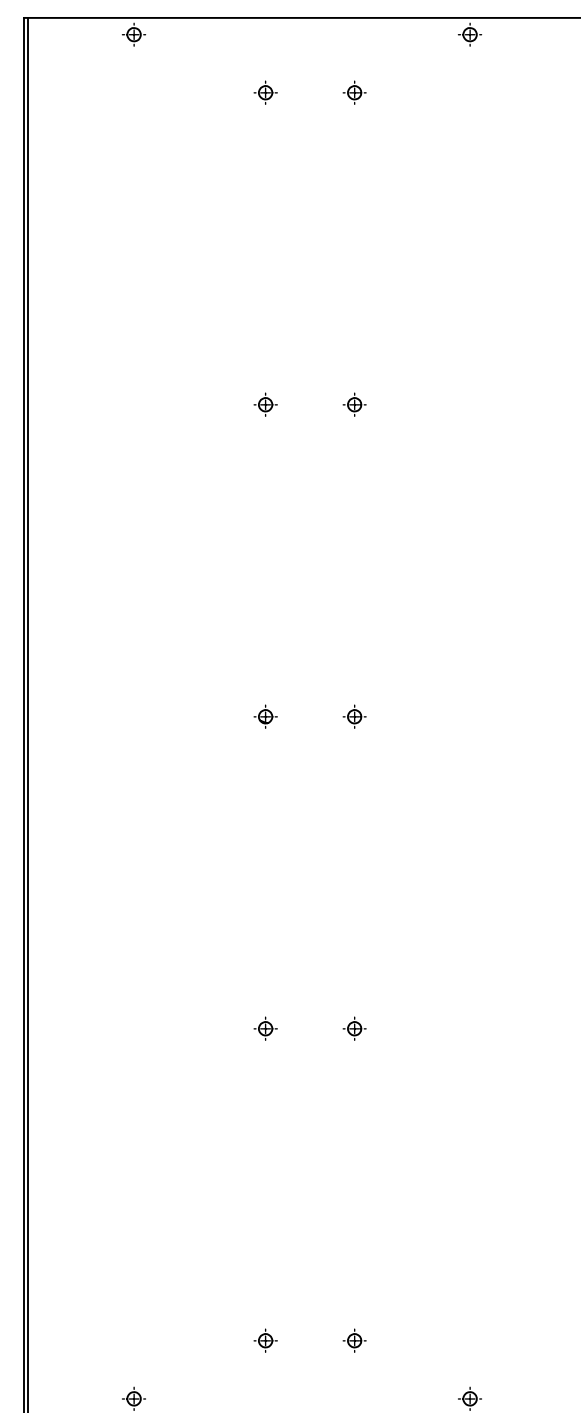
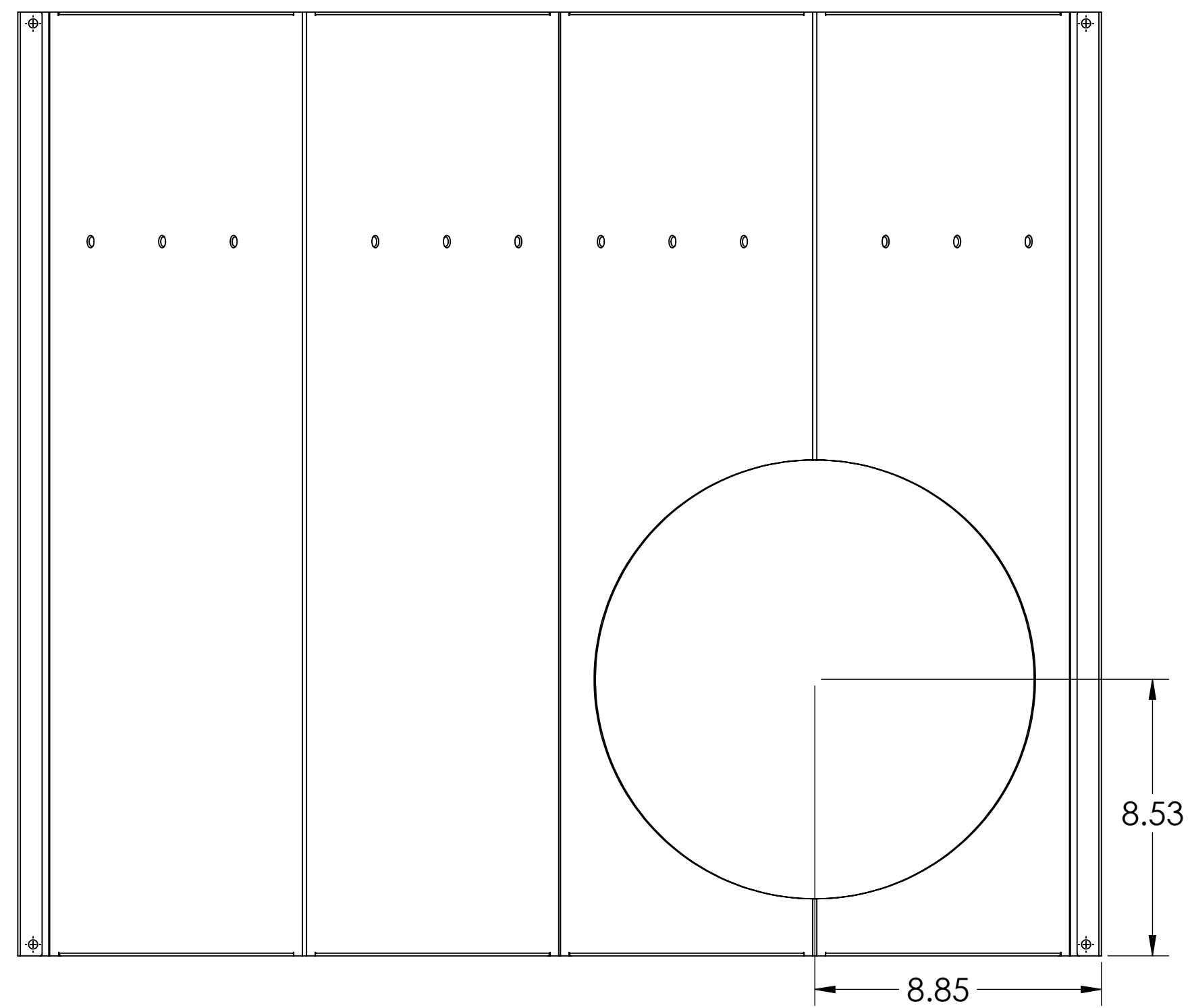
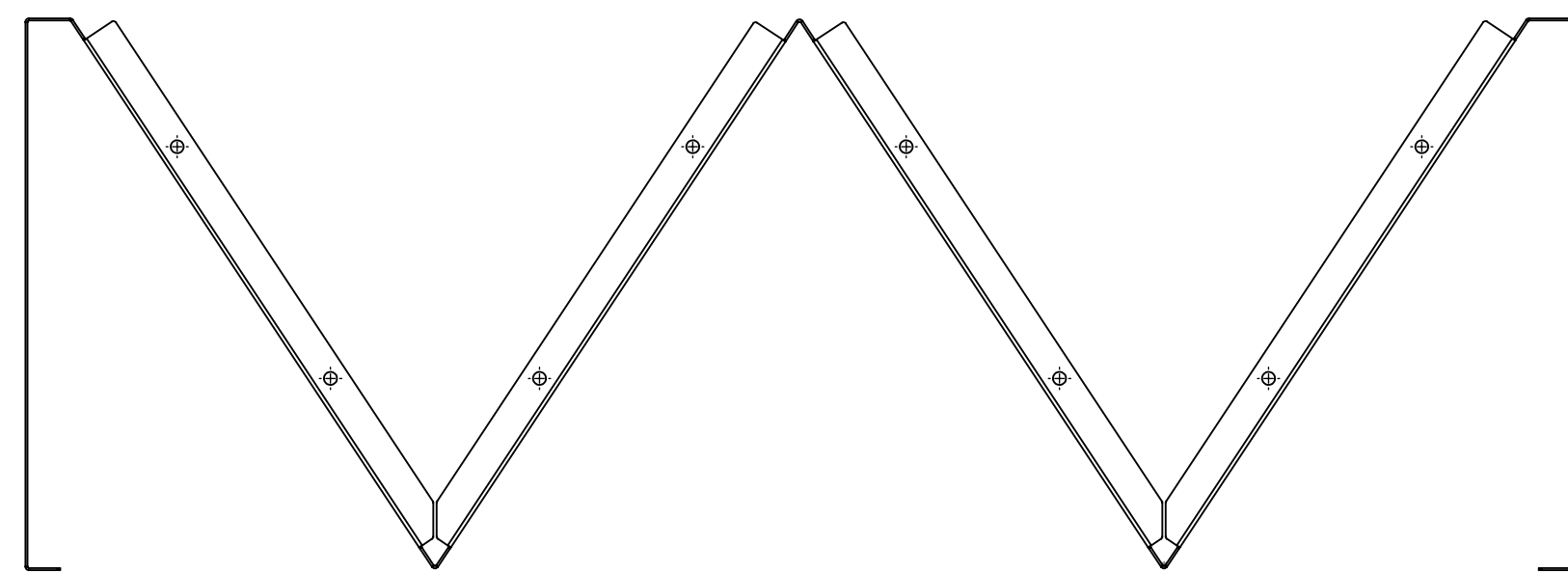
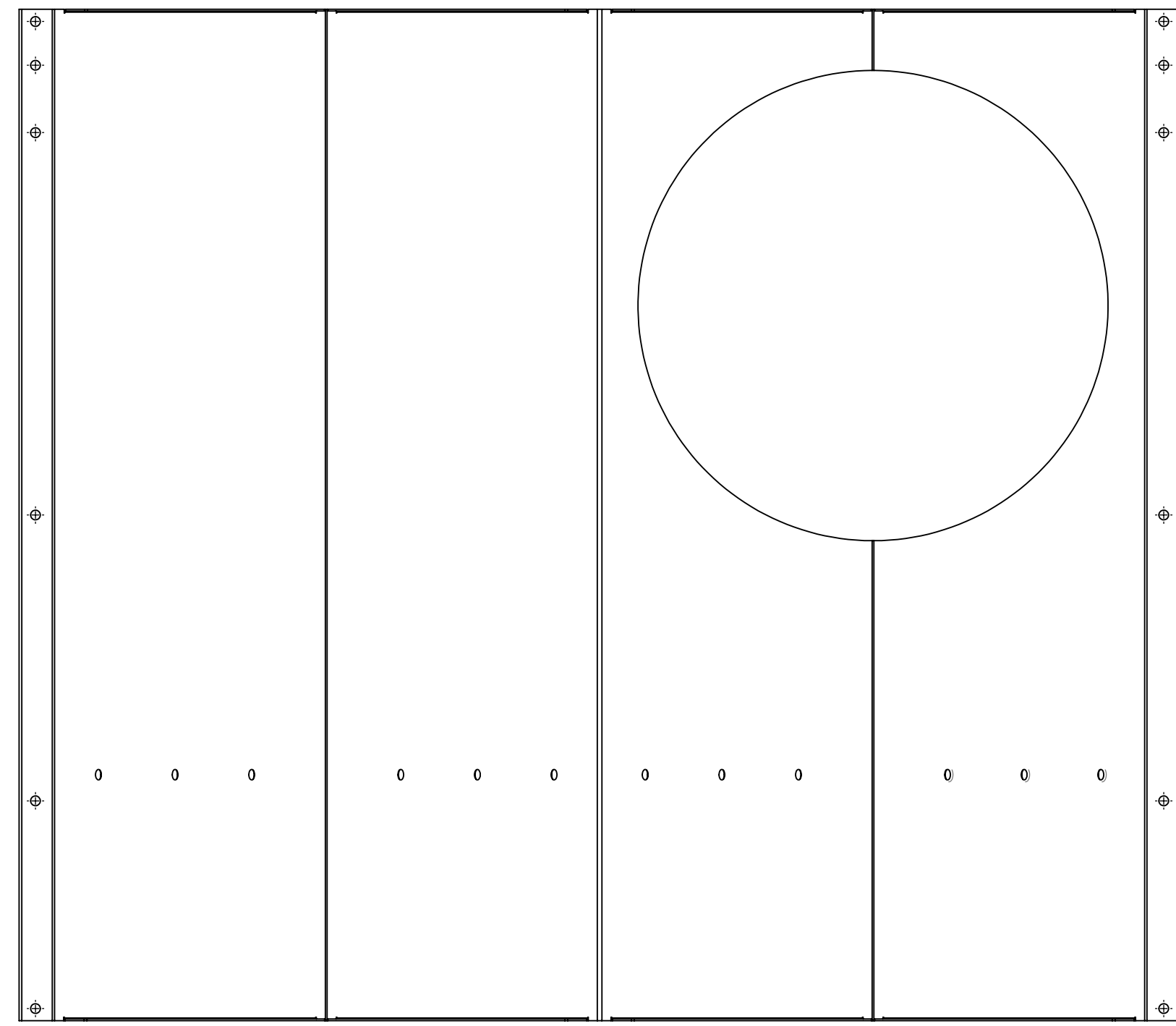
D1002357_AduIGO_ACS_SLC_ARM_Covily_Bottle_1 Hole Skin_PART PDM REV. X-006_DRAWING PDM REV. X-006



D1002357-02
ONE HOLE LEFT QPD SKIN
SEE D1002357-01 FOR DIMS NOT SHOWN

 CALIFORNIA INSTITUTE OF TECHNOLOGY MASSACHUSETTS INSTITUTE OF TECHNOLOGY		REV. v1
SIZE D	DWG. NO. D1002357	SHEET 5 OF 9
SCALE: 1:4	PROJECTION:	

D1002357_AudiLIGO_ACS_SLC_ARM_Cavity_Baffle_1 Hole_Skin_PART.PDM REV. X.006. DRAWING PDM REV. X.006



D1002357-03
ONE HOLE RIGHT NO QPD SKIN
SEE D1002357-01 FOR DIMS NOT SHOWN

ITEM NO.	PART NUMBER	DESCRIPTION	MATERIAL	REQ	SPARE	TOTAL
1	D1002357-03	ACB 1 HOLE RIGHT NO QPD SKIN	ENAMEL STL A424 TYPE I	1		1

PARTS LIST

LIGO CALIFORNIA INSTITUTE OF TECHNOLOGY
 MASSACHUSETTS INSTITUTE OF TECHNOLOGY

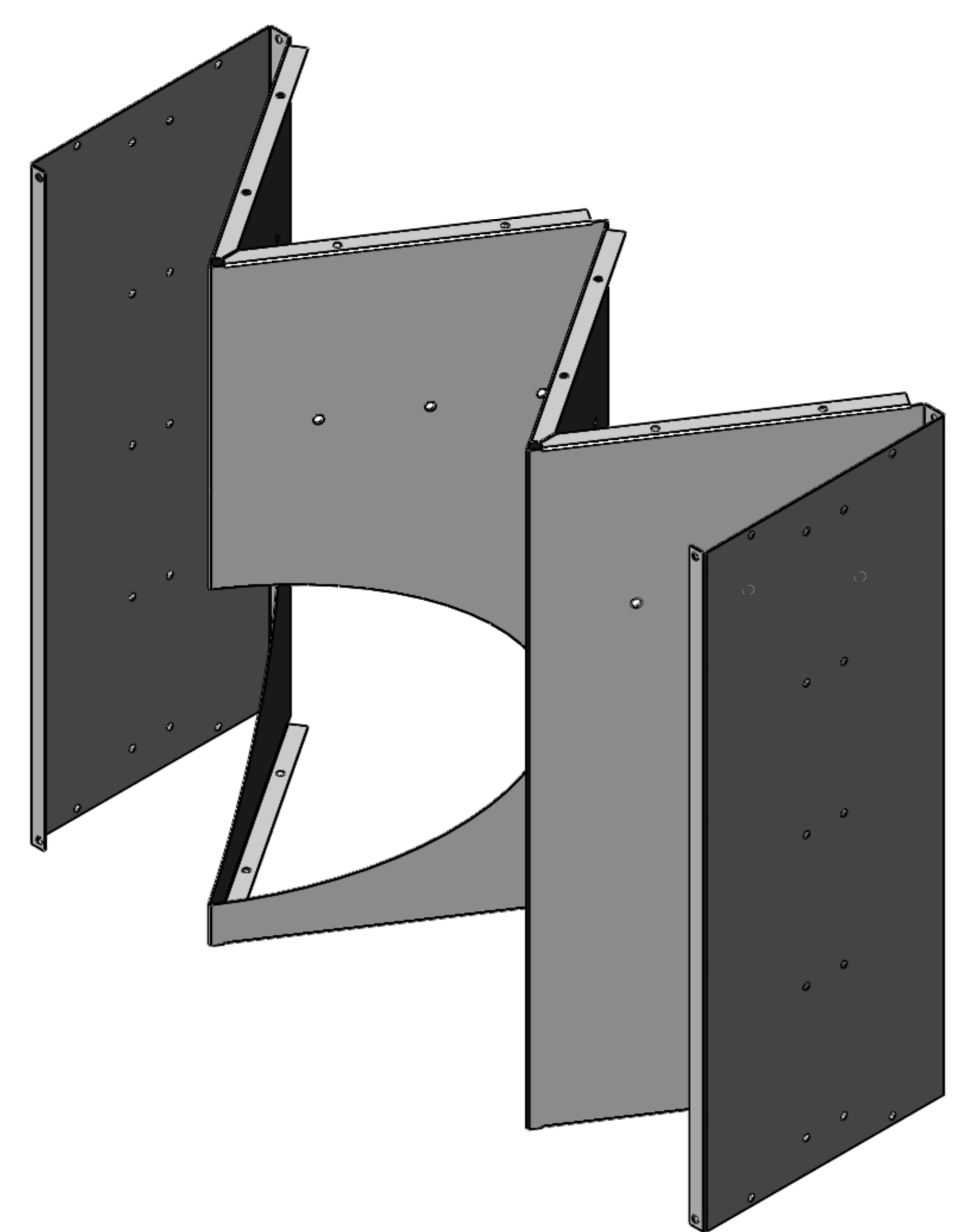
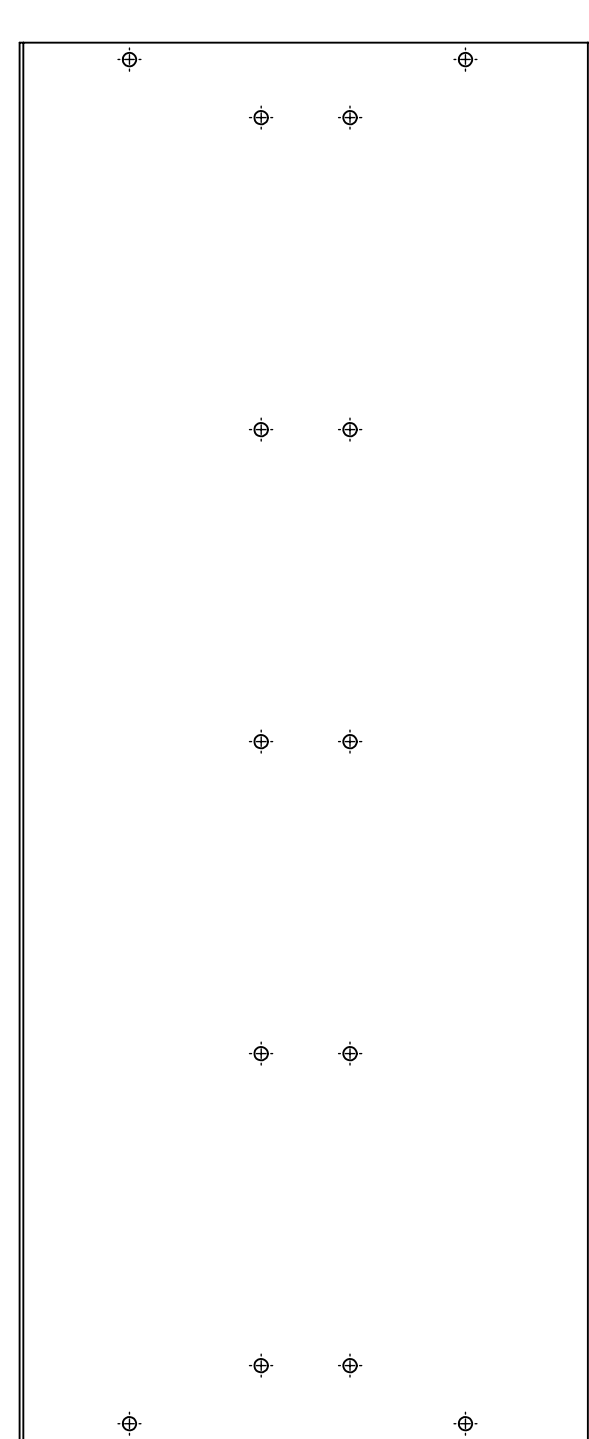
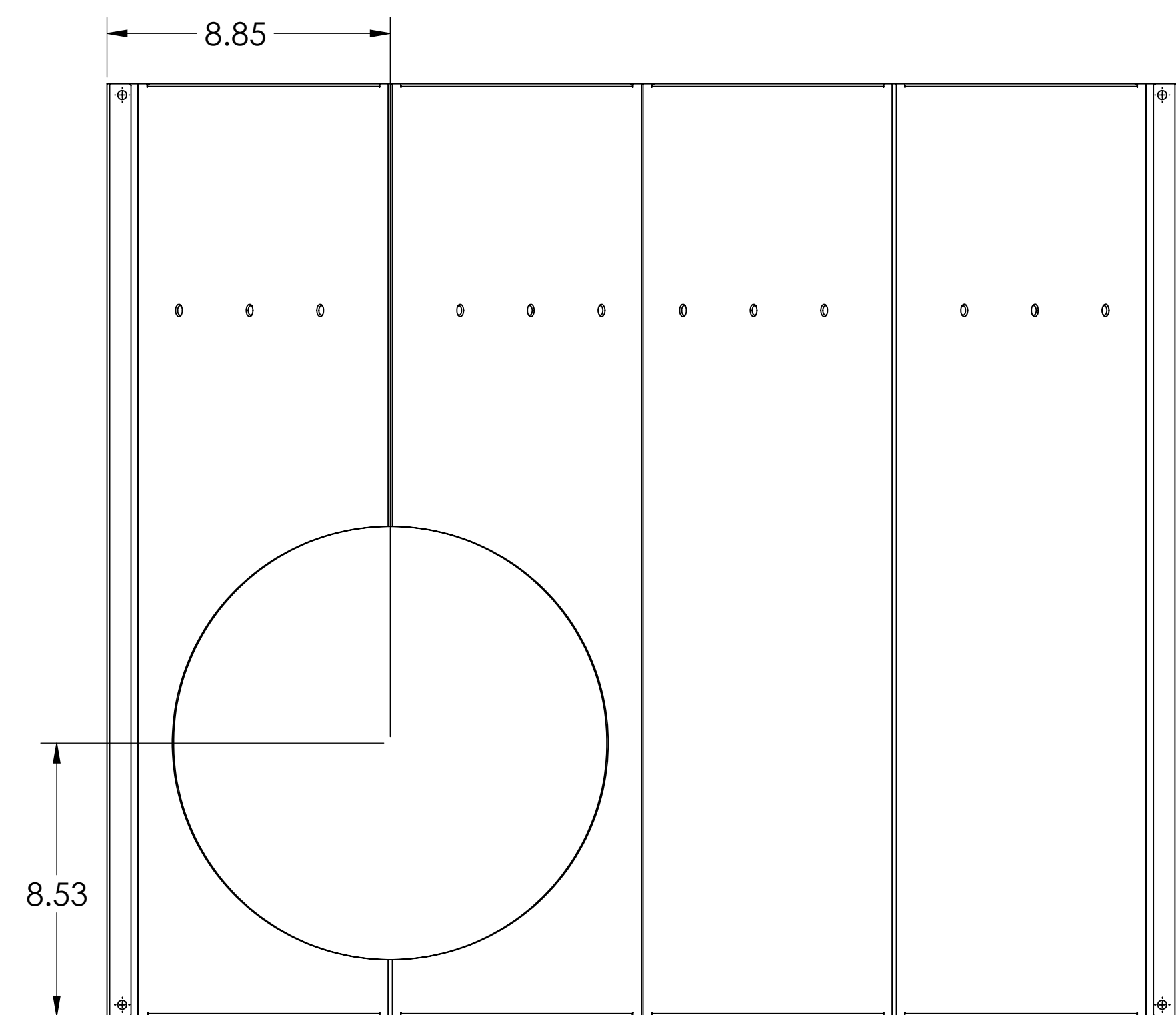
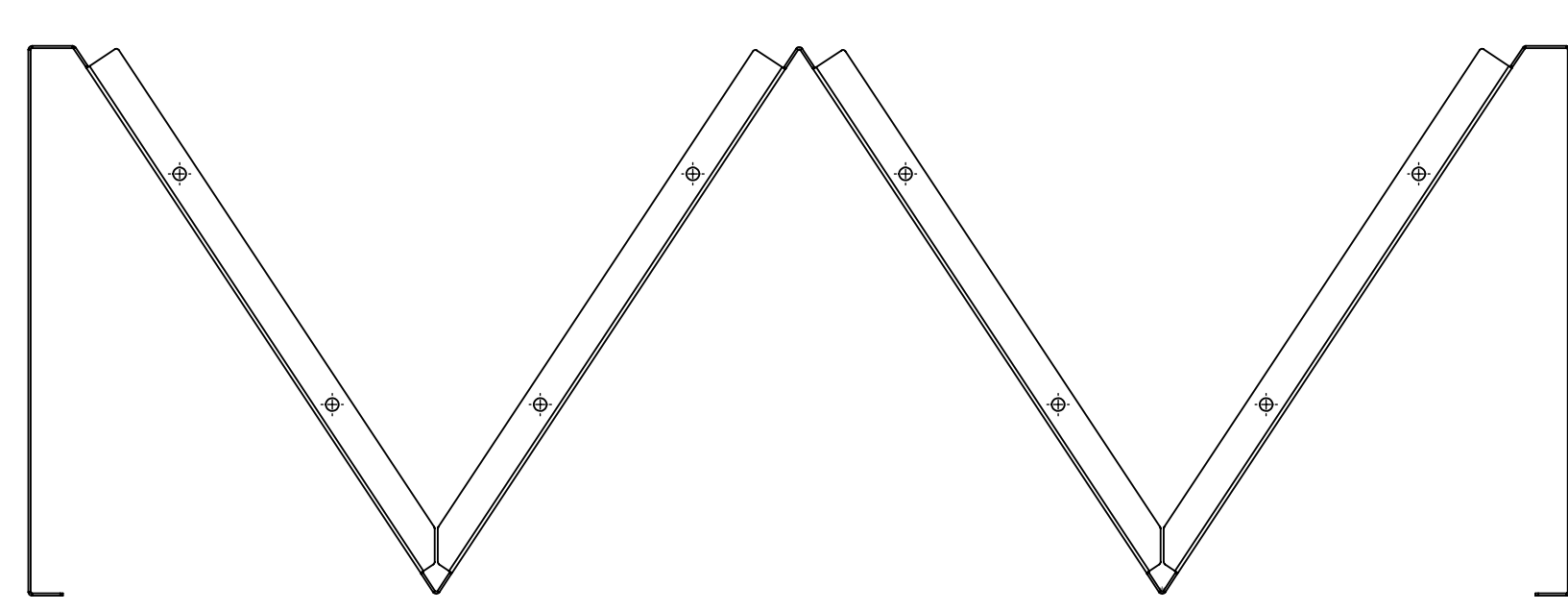
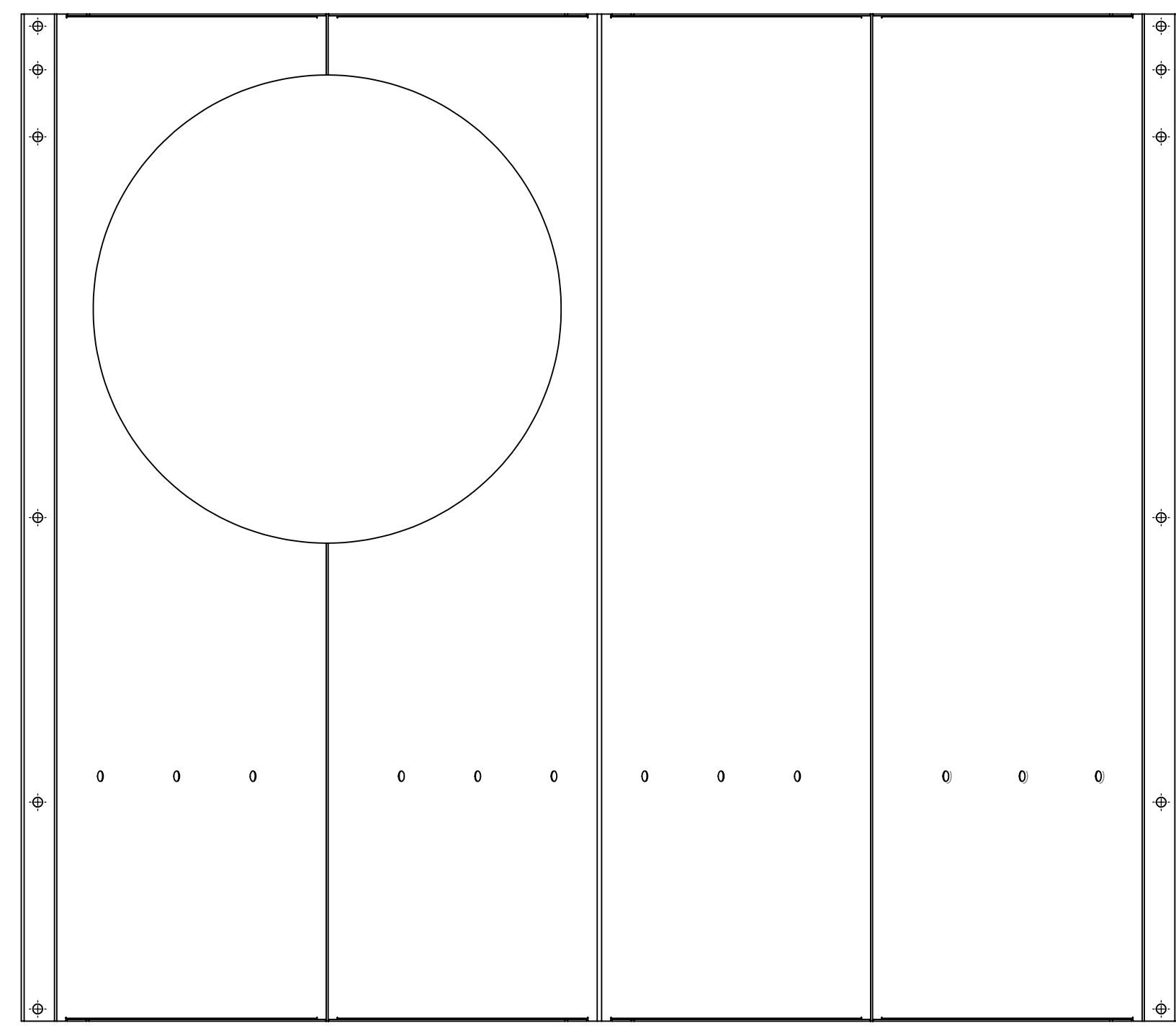
SIZE DWG. NO. REV.
D **D1002357** v1

SCALE: 1:4 PROJECTION: SHEET 6 OF 9

D1002357_AduIGO_ACS_SLC_ARM_Covily_Baffle_1 Hole Skin_PART PDM REV. X-006_DRAWING PDM REV. X-006

8 7 6 5 4 3 2 1

H
G
F
E
D
C
B
A



D1002357-04
ONE HOLE LEFT NO QPD SKIN
SEE D1002357-01 FOR DIMS NOT SHOWN

1	D1002357-04	ACB 1 HOLE LEFT NO QPD SKIN	ENAMEL STL A424 TYPE I	1	1
ITEM NO.	PART NUMBER	DESCRIPTION	MATERIAL	REQ	SPARE

PARTS LIST

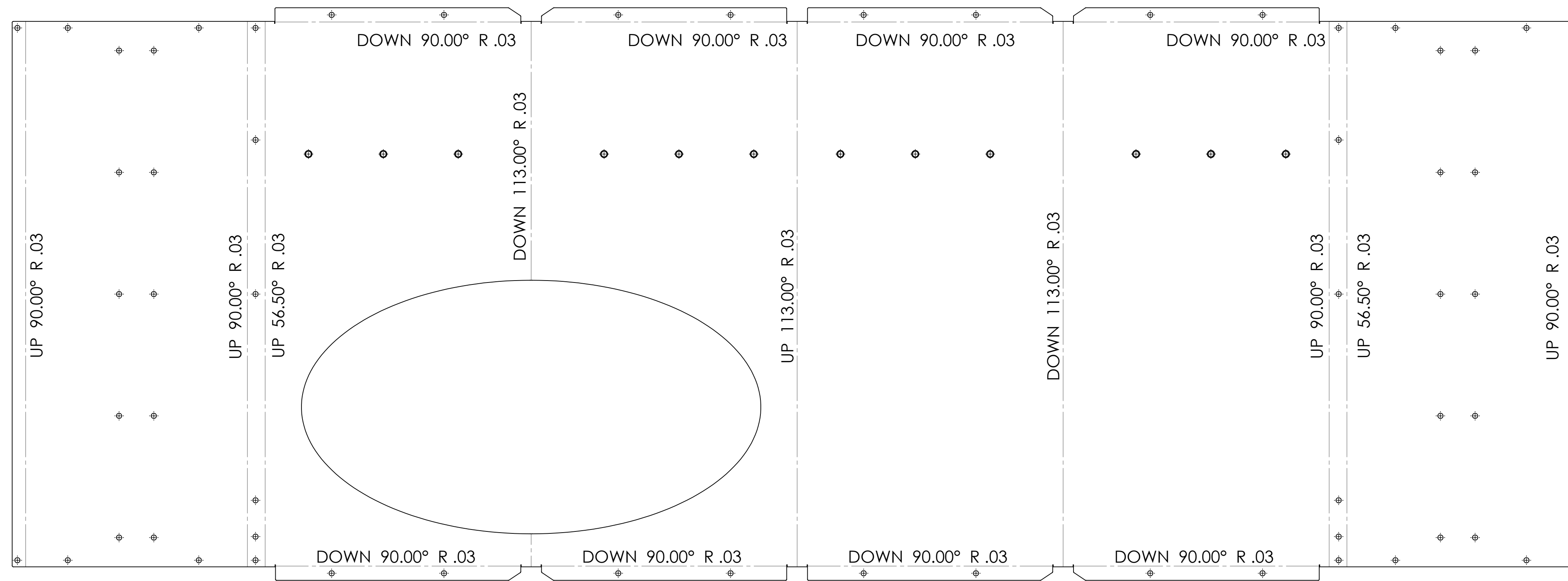
LIGO CALIFORNIA INSTITUTE OF TECHNOLOGY
 MASSACHUSETTS INSTITUTE OF TECHNOLOGY

SIZE DWG. NO. REV.
D **D1002357** v1

SCALE: 1:4 PROJECTION: SHEET 8 OF 9

D1002357_AduIGO_AQS_SLC_ARM_Covily_Bottle_1 Hole Skin_PART PDM REV: X-006 DRAWING PDM REV: X-006

8 7 6 5 4 3 2 1



D1002357-04
ONE HOLE LEFT NO QPD SKIN
SEE D1002357-01 FOR DIMS NOT SHOWN

 CALIFORNIA INSTITUTE OF TECHNOLOGY MASSACHUSETTS INSTITUTE OF TECHNOLOGY		SIZE DWG. NO. D D1002357	REV. v1
SCALE: 1:4	PROJECTION:	SHEET 9 OF 9	

D1002357_AduLIGO_AOS_SLC_ARM_Cavity_Baffle_1 Hole Skin_PART PDM REV. X.006_DRAWING PDM REV. X.006