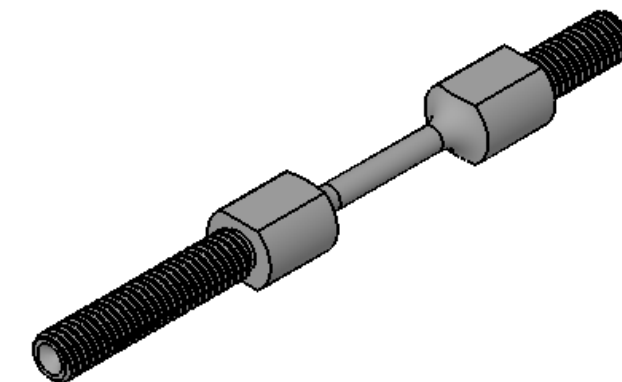
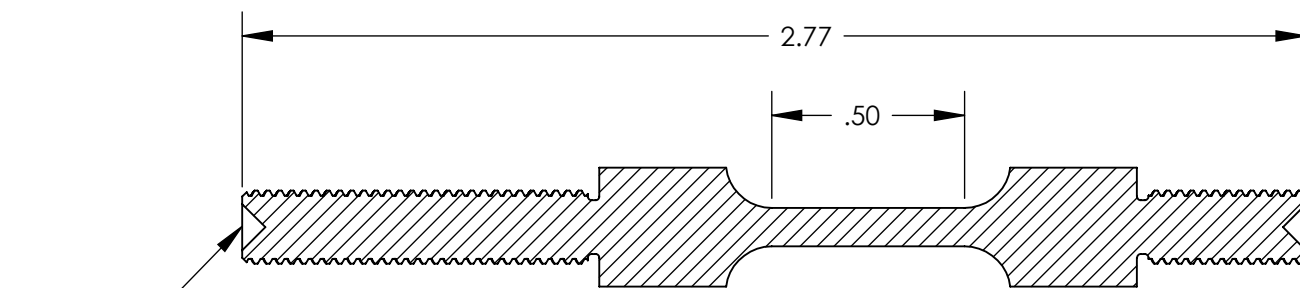
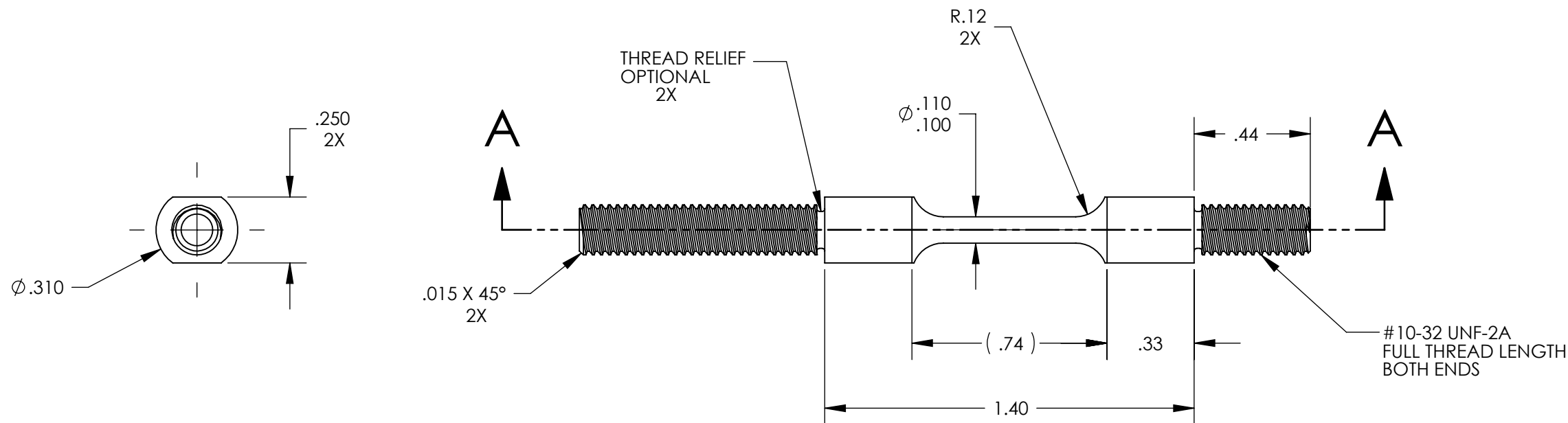


NOTES CONTINUED:

- 5. SCRIBE, ENGRAVE, OR MECHANICALLY STAMP (NO INKS OR DYES) DRAWING PART NUMBER, REVISION (AND VARIANT OR "TYPE" IF APPLICABLE) ON NOTED SURFACE OF PART FOLLOWED NEXT LINE WITH A THREE DIGIT SERIAL NUMBER. SERIAL NUMBERS START AT 001 FOR THE FIRST ARTICLE AND PROCEEDED CONSECUTIVELY. USE MINIMUM 0.12" HIGH CHARACTERS. UNLESS THE SIZE OF THE PART DICTATES SMALLER CHARACTERS. A VIBRATORY TOOL MAY BE USED.
- FOR SMALL PARTS BAG AND TAG PARTS WITH THEIR DRAWING PART NUMBER, REVISION VARIANT OR "TYPE" (IF APPLICABLE), AND QUANTITY.
EXAMPLE: DXXXXX-VY, TYPE-XX, S/N XXX
- 6. APPROXIMATE WEIGHT=0.025 LB.
- 7. MACHINE ALL SURFACES TO REMOVE OXIDES AND MILL FINISH, USE OF ABRASIVE REMOVAL TECHNIQUES IS NOT ALLOWED. REFER TO LIGO-E0900364
- 8. ALL PARTS SHALL BE MANUFACTURED IN ACCORDANCE WITH LIGO SPECIFICATION E0900364.
- 9. ALL MATERIAL IS TO BE VIRGIN MATERIAL (i.e. NO WELD REPAIRS, PLUGS OR RECYCLED MATERIAL). NO REPAIRS SHALL BE MADE UNLESS APPROVED IN ADVANCE, AND IN WRITING, BY LIGO LABORATORY. REFER TO LIGO-E0900364.

REV.	DATE	DCN #	DRAWING TREE #
v1	18 OCT 2010	E1000285	-
v2	04 APR 2011	E1100216	-
-	-	-	-



ISO VIEW FOR REFERENCE ONLY

NOTES AND TOLERANCES: (UNLESS OTHERWISE SPECIFIED)

DIMENSIONS ARE IN INCHES		1. INTERPRET DRAWING PER ASME Y14.5-1994.	
TOLERANCES:		2. REMOVE ALL SHARP EDGES 0.005" TO 0.015".	
.XX ± .01		3. DO NOT SCALE FROM DRAWING.	
.XXX ± .005		4. ALL MACHINING FLUIDS MUST BE FULLY SYNTHETIC, FULLY WATER SOLUBLE AND FREE OF SULFUR, SILICONE, AND CHLORINE. REFER TO LIGO E0900237 FOR LIST OF APPROVED COOLANTS.	
ANGULAR ± 0.5°		MATERIAL	FINISH
		316 SSSL	63 μinch

LIGO CALIFORNIA INSTITUTE OF TECHNOLOGY MASSACHUSETTS INSTITUTE OF TECHNOLOGY		PART NAME	
SYSTEM ADVANCED LIGO		SLC ACB SUSPENSION ROD	
SUB-SYSTEM AOS		DESIGNER	N.Nguyen
NEXT ASSY D1001005		DRAFTER	TQ. NGUYEN
		CHECKER	M. SMITH
		APPROVAL	D. COYNE

DATE	01 SEP 2010	SIZE	DWG. NO.	REV.
18 OCT 2010		B	D1002340	v2
10 NOV 2010		SCALE:	2:1	PROJECTION:
				SHEET 1 OF 1