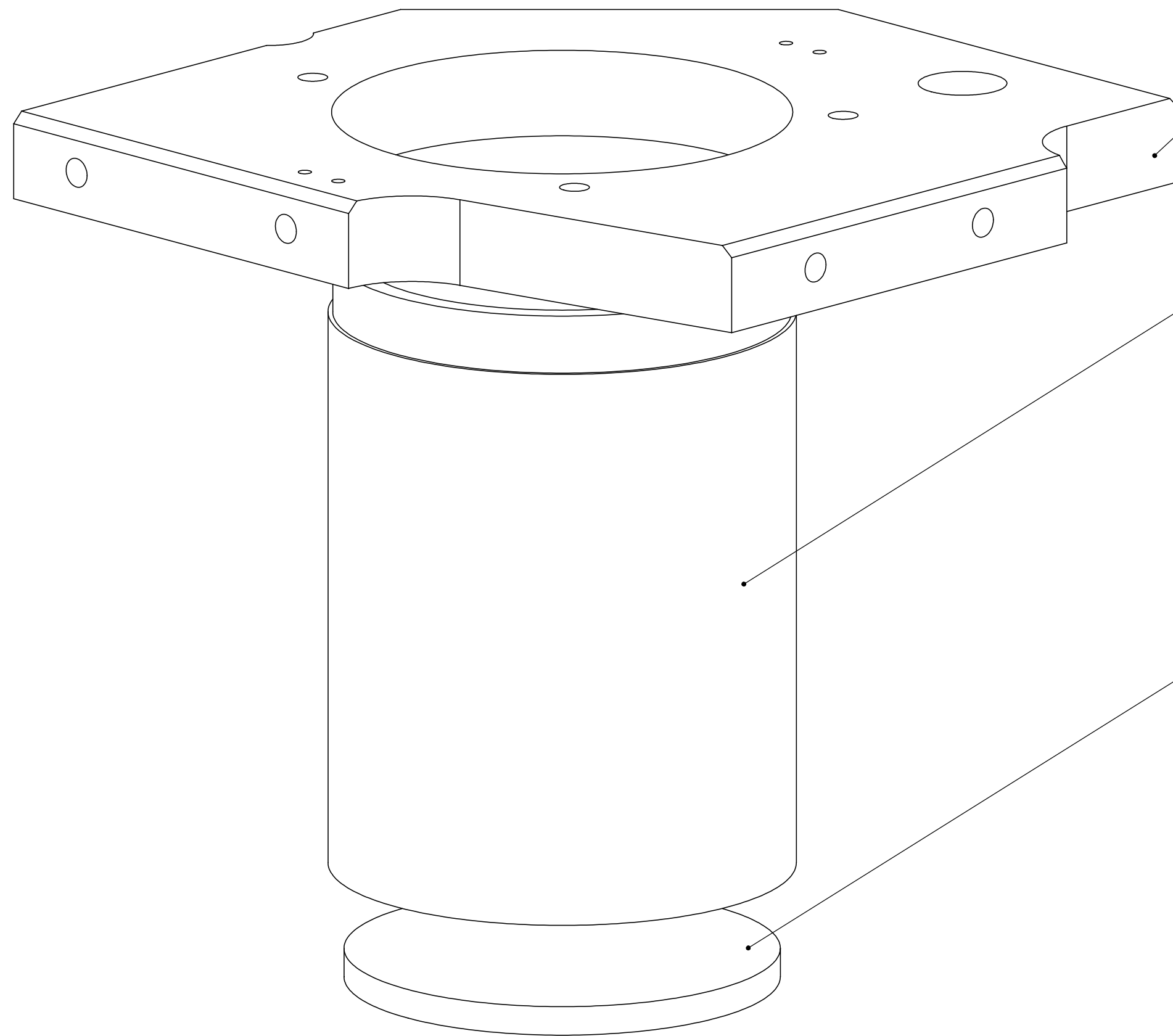



REV.	DATE	DCN #	DRAWING TREE #
A	2/9/2003		



**Top Foundation Plate  
D020290  
see sheet 18**

**Top Bellow Slug  
D020291-1  
see sheet 20**

**Top Bellow Cap  
D020291-2  
see sheet 20**

UNLESS OTHERWISE SPECIFIED:		DATE	NAME	 <b>CALIFORNIA INSTITUTE OF TECHNOLOGY MASSACHUSETTS INSTITUTE OF TECHNOLOGY</b>	
DIMENSIONS ARE IN INCHES		DRAWN	4/02		Hardham
TOLERANCES: .XX ± 0.020"		REDRAWN	Fall' 02		Hammond
.XXX ± 0.005"		CHECKED	2/9/03		Kern
ANGULAR ± 30'					
MATERIAL		COMMENTS:		SYSTEM LASTI SUB-SYSTEM HEPI NEXT ASSY PART NAME Exploded Top Foundation plate sub-assembly SIZE DWG. NO.	
FINISH 32 RMS unless noted		1 Required for each actuator		<b>C</b> D020361-A-E SCALE: 1:1 unless noted	