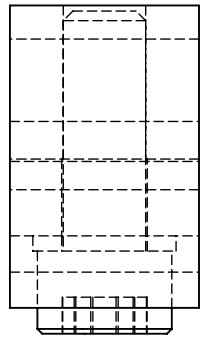
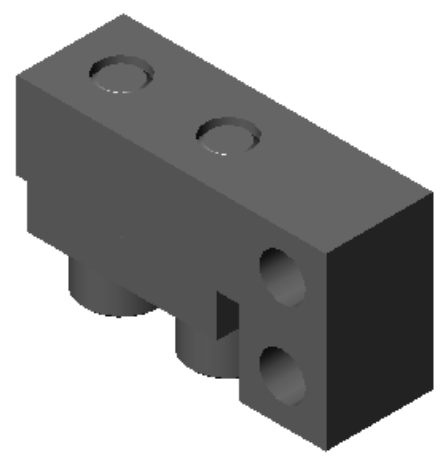
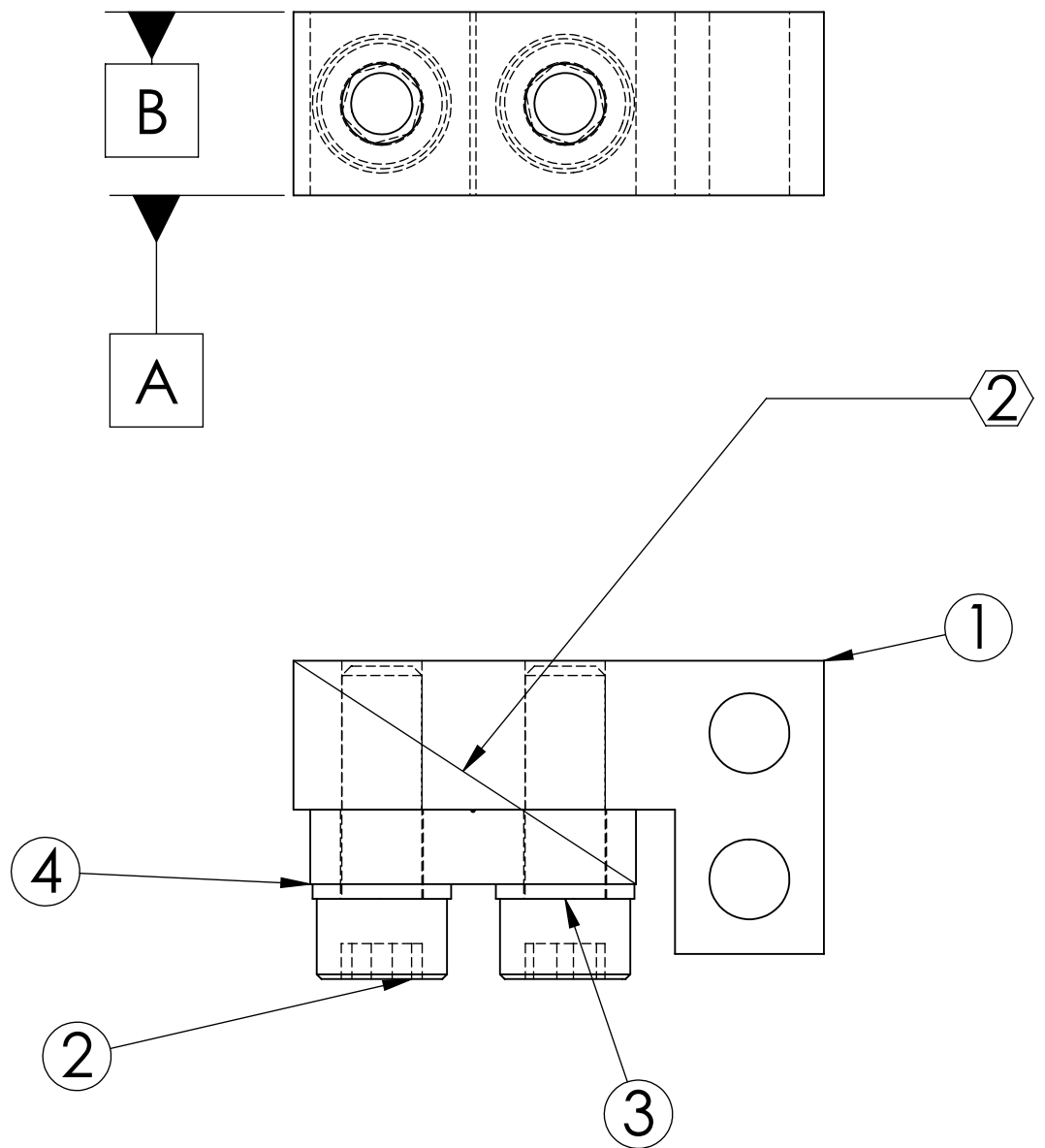


8 7 6 5 4 3 2 1

REV.	DATE	DCN #	DRAWING TREE #
A	24th JUNE 2004	E040303-00	
B	9th APRIL 2008	E080156-00	

D  
C  
B  
A





ALT	REQ.	SPARE	TOT.	PART NUMBER	DESCRIPTION	MATERIAL
1	0	0	0	D020132	LOWER BLADE WIRE CLAMP	300 SSSL
2	2	2	4		FLAT WASHERS NAS 620-C2 (OR EQUIV.)	300 SSSL
3	2	2	4		Ag-SST SOCKET HEAD CAP SCREW #2-56 UNC-2A X 0.25 LONG	300 SSSL
4	1	0	1	D020133	LOWER BLADE WIRE CLAMP PALTE	300 SSSL
ALT	1	0	1	D030044	LOWER BLADE WIRE CLAMP PLATE THICK (ALT TO D020133)	300 SSSL
ITEM NO	REQ.	SPARE	TOT.	PART NUMBER	DESCRIPTION	MATERIAL

**NOTES: (UNLESS OTHERWISE SPECIFIED)**

- FLY CUT DATUM -A- AND -B- SURFACE TO ACHIEVE FLATNESS OF .001.
- SCRIBE OR ETCH LINE APPROX AS SHOWN .02 DEEP .02 WIDE AFTER FLY CUTTING AND PRIOR TO DISASSEMBLY.

DIMENSIONS ARE IN INCHES  
 TOLERANCES:  
 .XX ±:0.01  
 .XXX ±:0.005  
 ANGULAR: ±0.5

NAME	DATE	 <b>CALIFORNIA INSTITUTE OF TECHNOLOGY          MASSACHUSETTS INSTITUTE OF TECHNOLOGY          IGR, GLASGOW UNIVERSITY GEO 600 GROUP</b>
DRAWN	11/11/02	
CIT		
CHECKED		

**SYSTEM** ADVANCED LIGO  
**SUB-SYSTEM** SUS  
**NEXT ASSY** MC: UPPER MASS  
**PART NAME** LOWER BLADE WIRE CLAMP ASSEMBLY  
 SIZE **B** DWG. NO. **D020318** REV. **B**  
 SCALE: NTS PROJECTION:  SHEET 1 OF 1

8 7 6 5 4 3 2 1