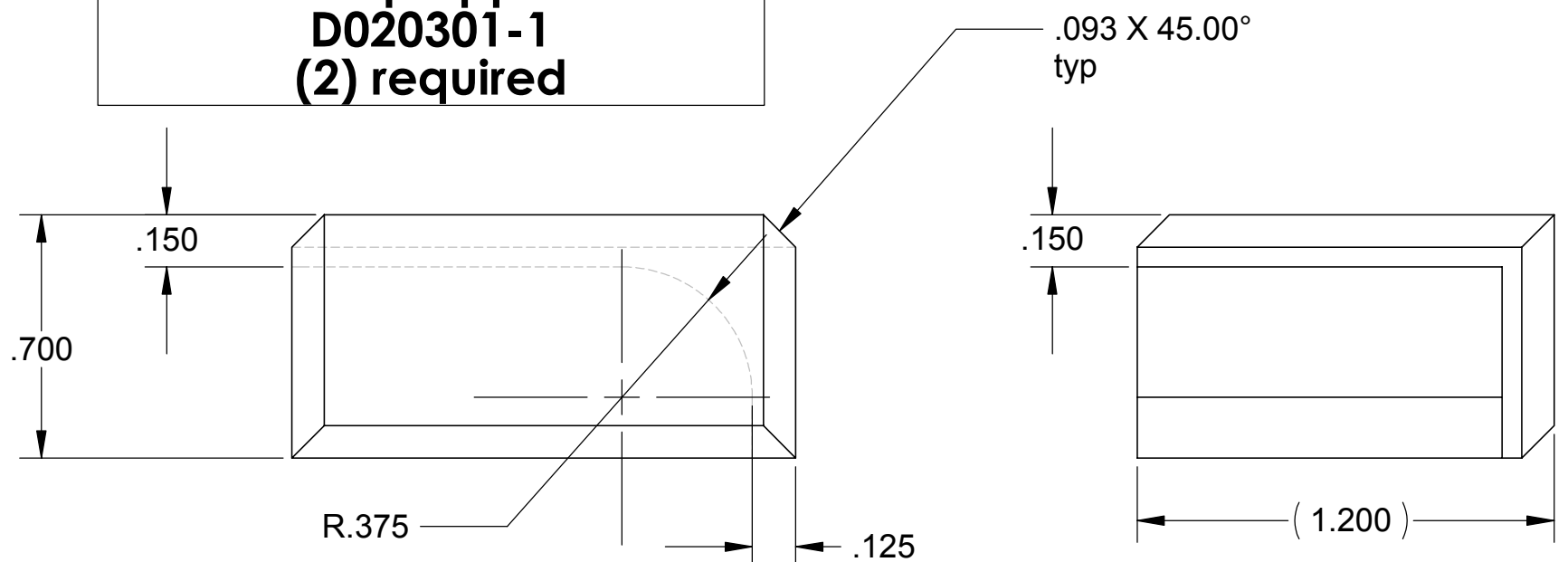


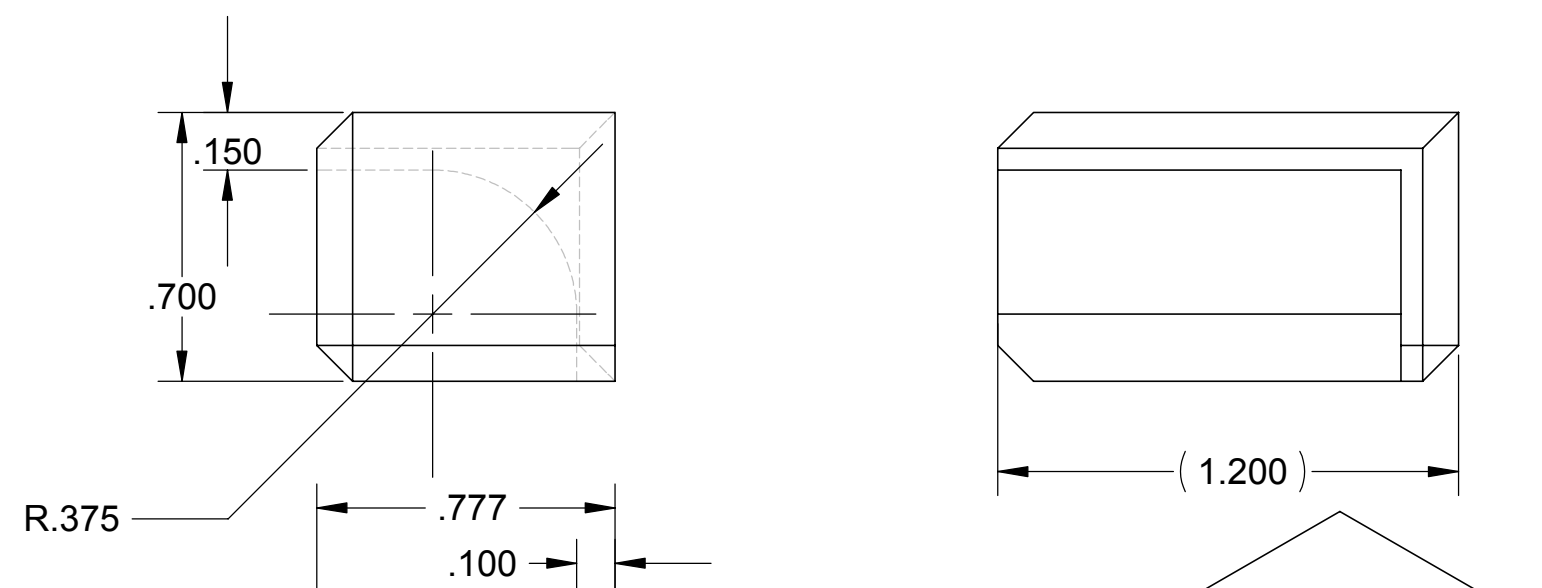
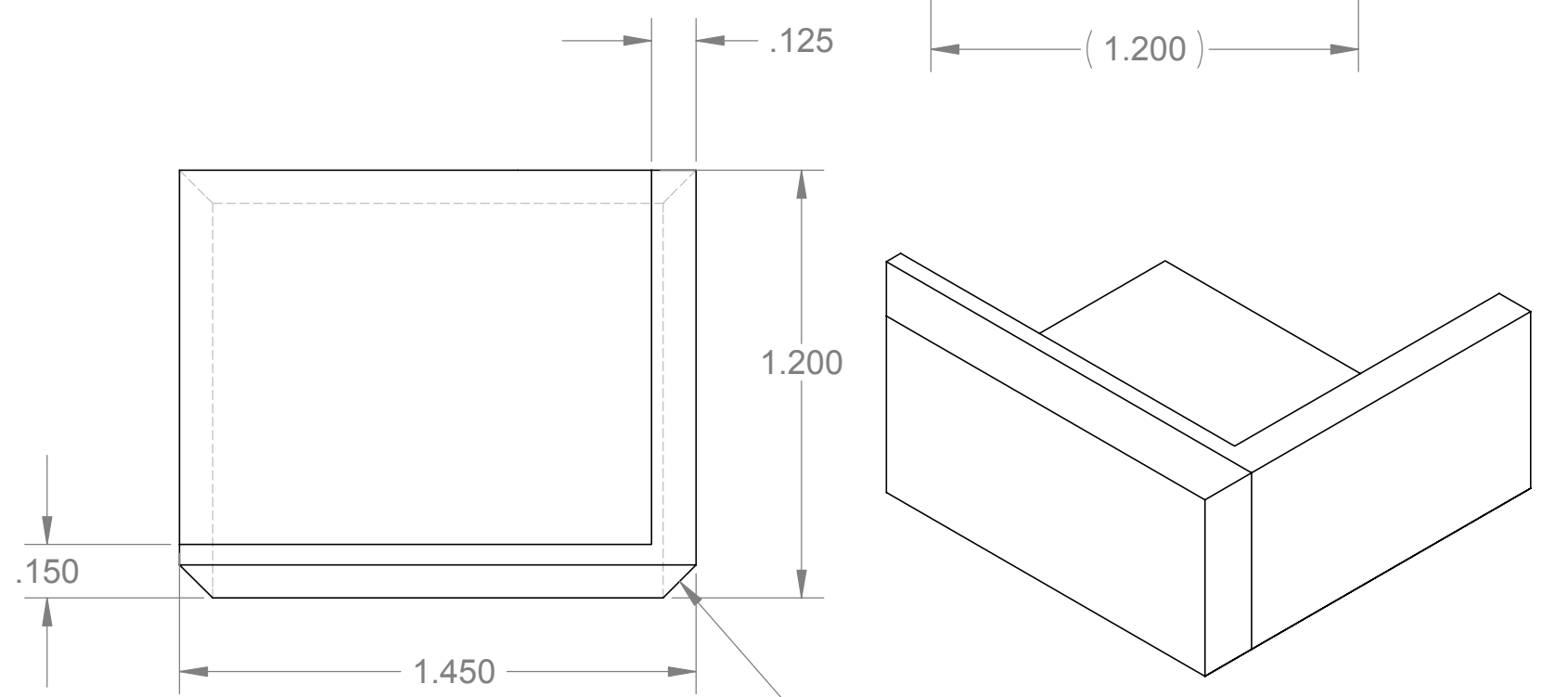
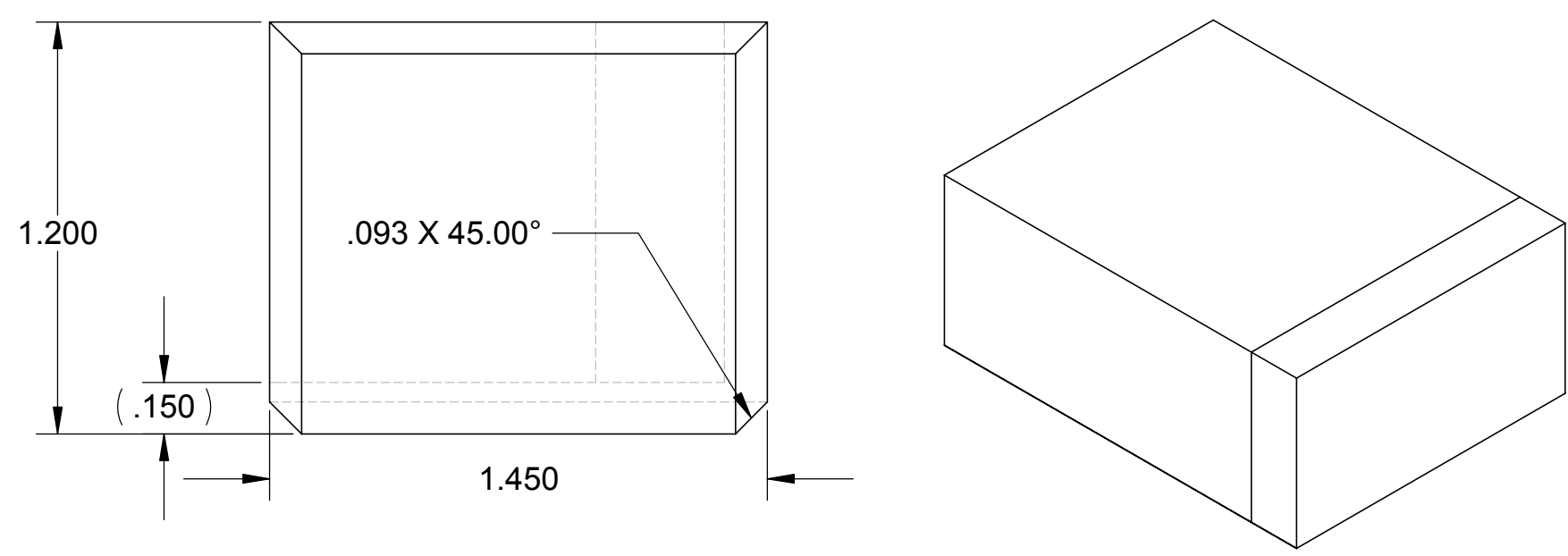
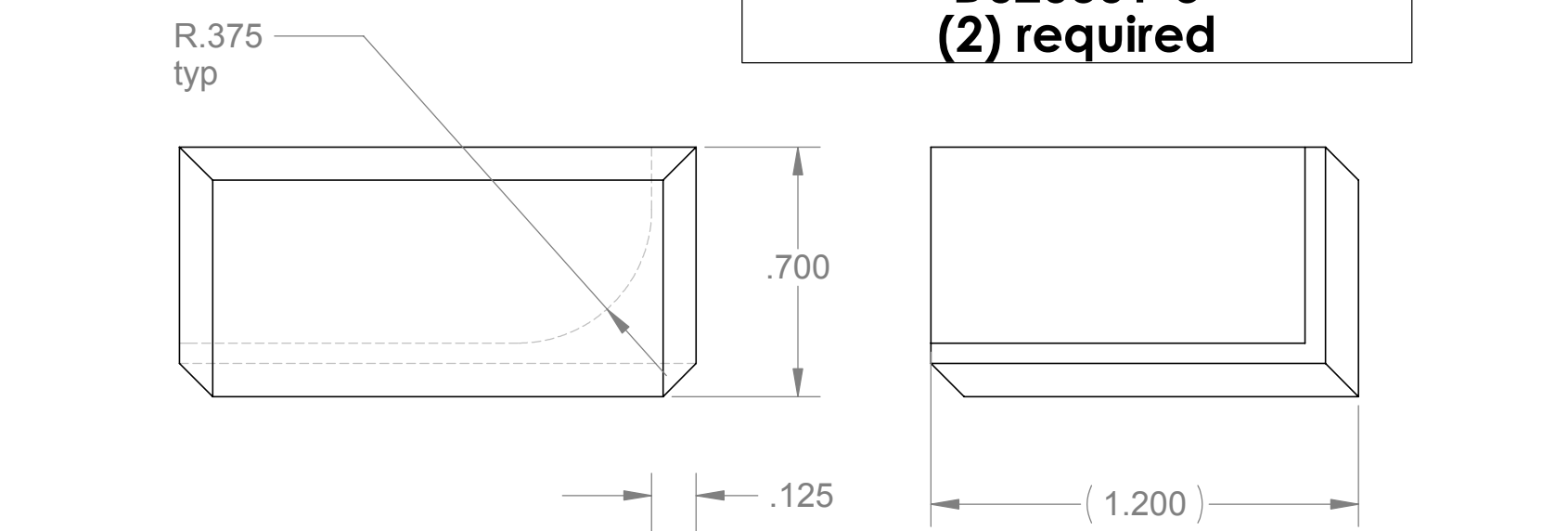
NOTES: Lower manifold caps are mirror images of upper manifold caps

REV.	DATE	DCN #	DRAWING TREE #
A	2/9/2003		

**Manifold Cap Upper Inboard
D020301-1
(2) required**




**Manifold Cap lower Inboard
D020301-3
(2) required**



**Manifold Caps Upper Outboard
D020301-2
(2) required**

**Manifold Caps Lower Outboard
D020301-3
(2) required**

.093 X 45.00°
typ

UNLESS OTHERWISE SPECIFIED: DIMENSIONS ARE IN INCHES		DATE	NAME	 CALIFORNIA INSTITUTE OF TECHNOLOGY MASSACHUSETTS INSTITUTE OF TECHNOLOGY	
TOLERANCES: .XX ± 0.02"		DRAWN	4/02		Hardham
.XXX ± 0.001"		REDRAWN	Fall '02		Hammond
ANGULAR ± 30'		CHECKED	2/9/03	Kern	
MATERIAL: 304 L		COMMENTS:		SYSTEM LASTI	
FINISH 32 RMS unless noted				SUB-SYSTEM HEPI	
				NEXT ASSY	
				PART NAME Manifold Weld Caps	
				SIZE DWG. NO. C D020301-A-E	
				REV A	
				SCALE: 4:1 unless noted	