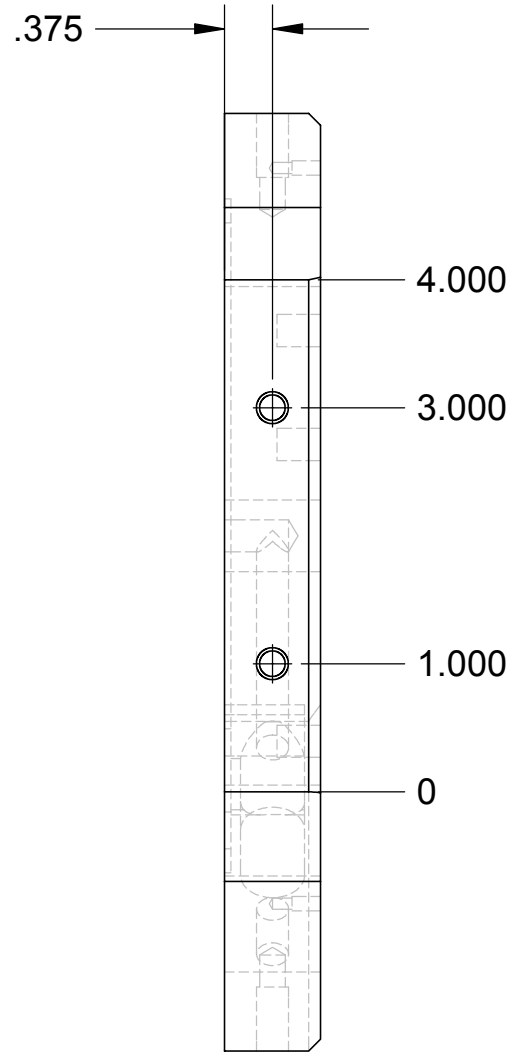
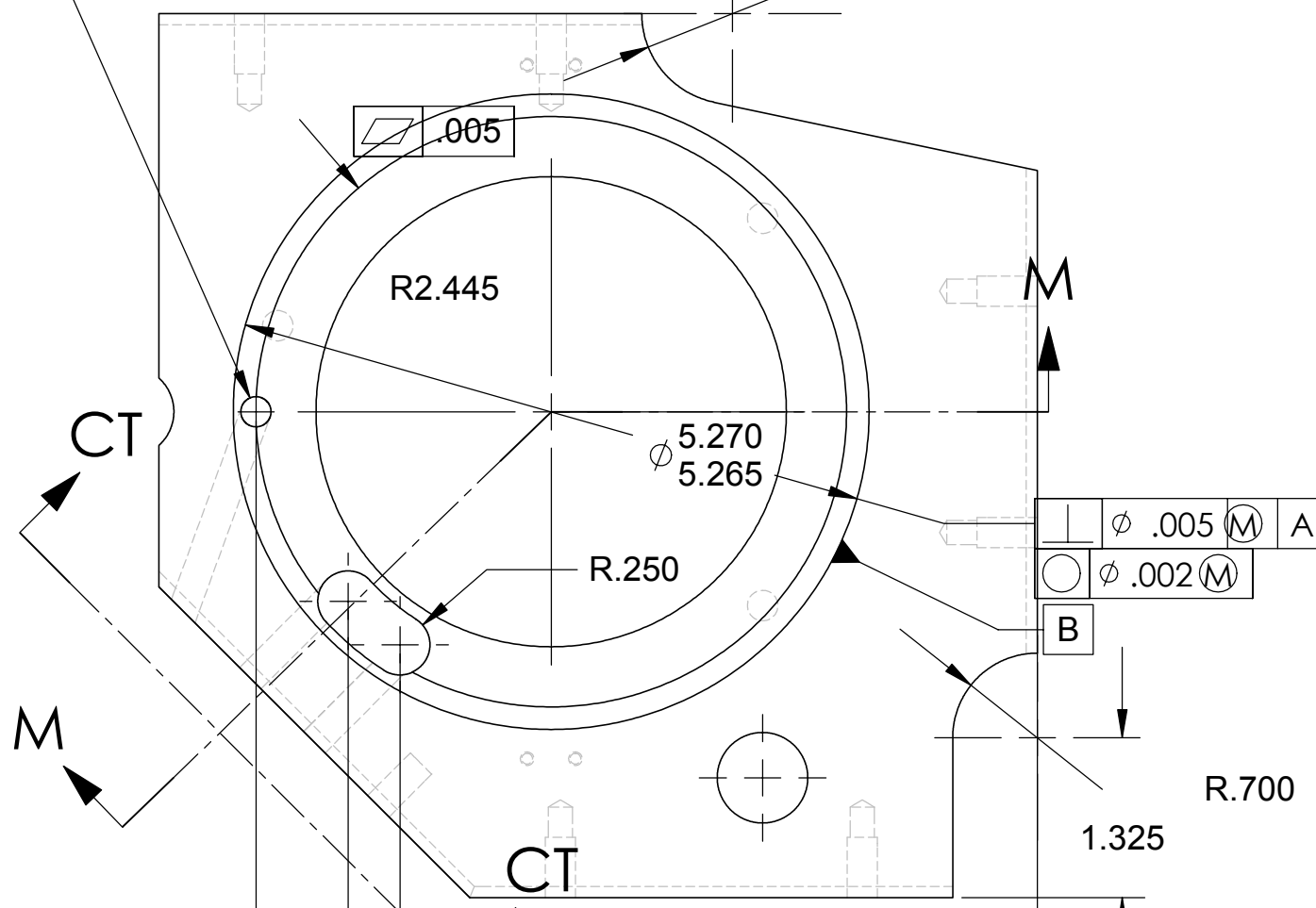
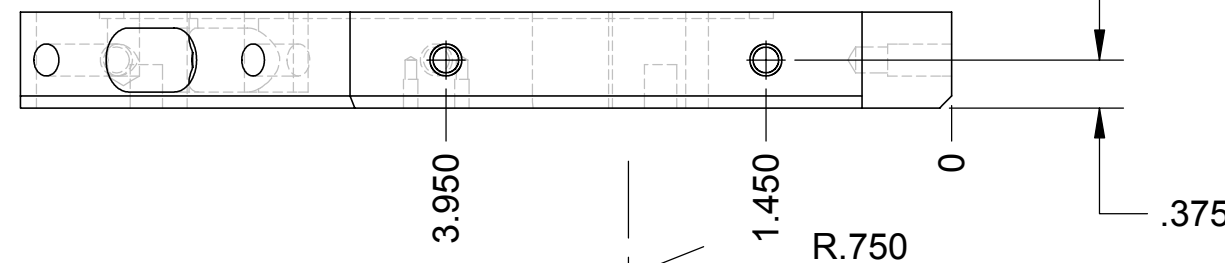


NOTES: (UNLESS OTHERWISE SPECIFIED)

REV.	DATE	DCN #	DRAWING TREE #
A	2/9/2003		



$\phi .250 \nabla .500$

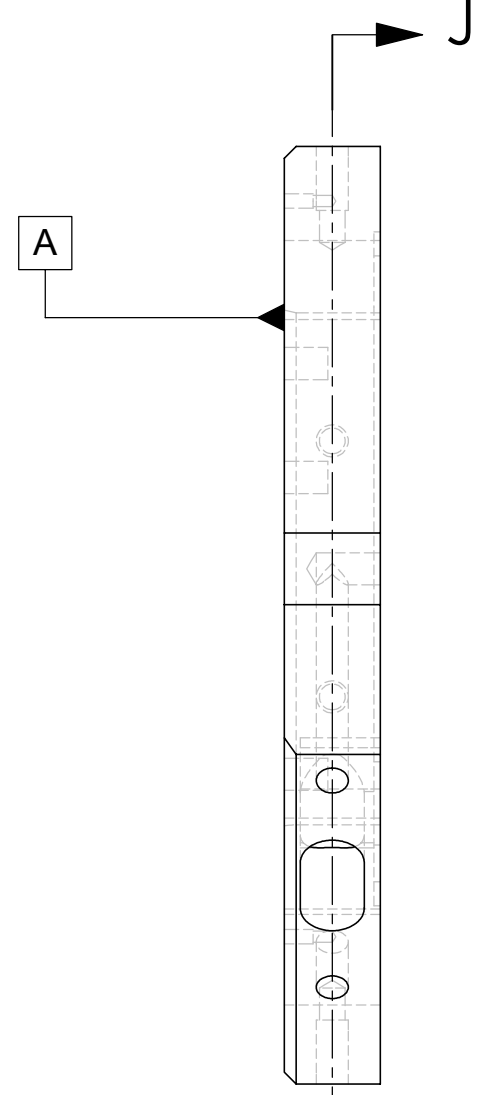
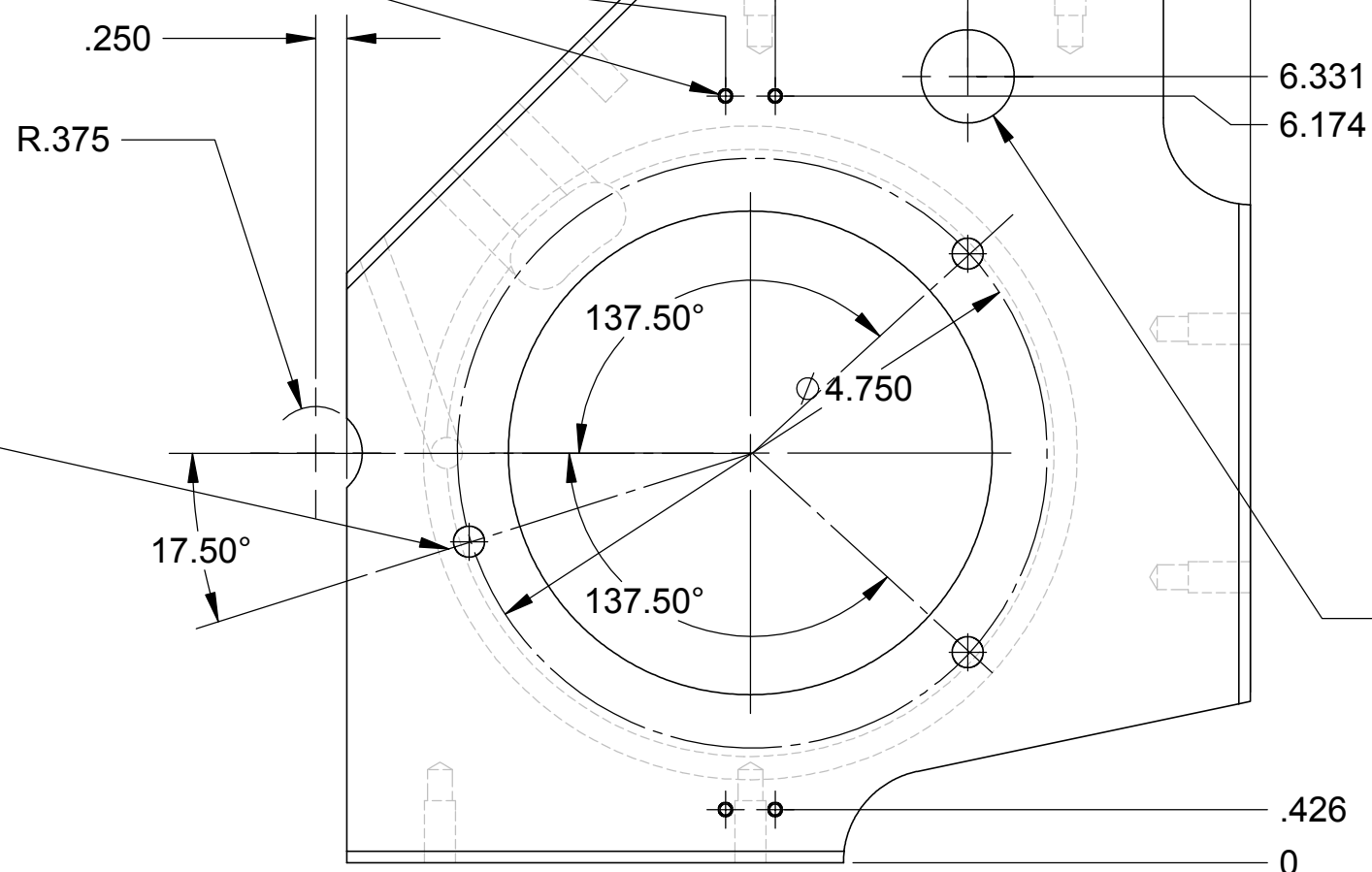


$\phi .201 \nabla .750$
For a 1/4-20 tapped hole
typ (6) plcs



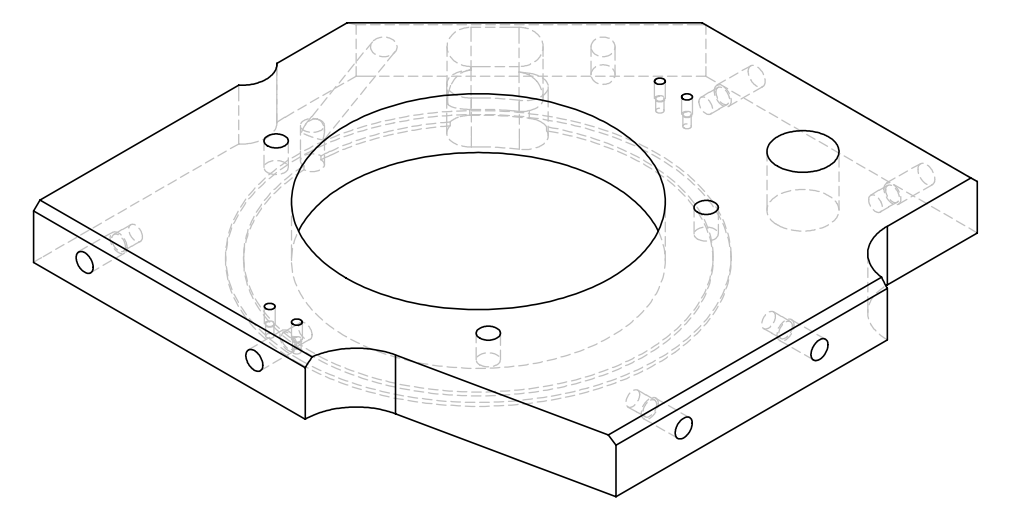
$\phi .089 \nabla .375$
4 - 40 UNF $\nabla 0.224$
4 TYP

Bottom tap
for 1/4-20 x .340 dp.
typ (3) plcs.

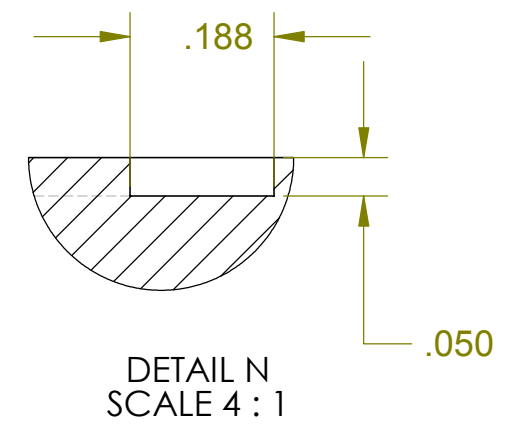
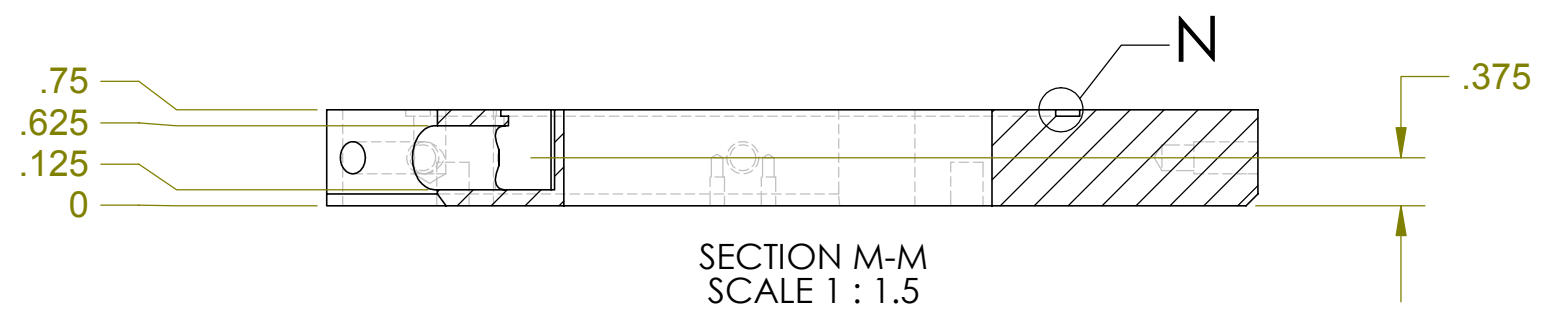
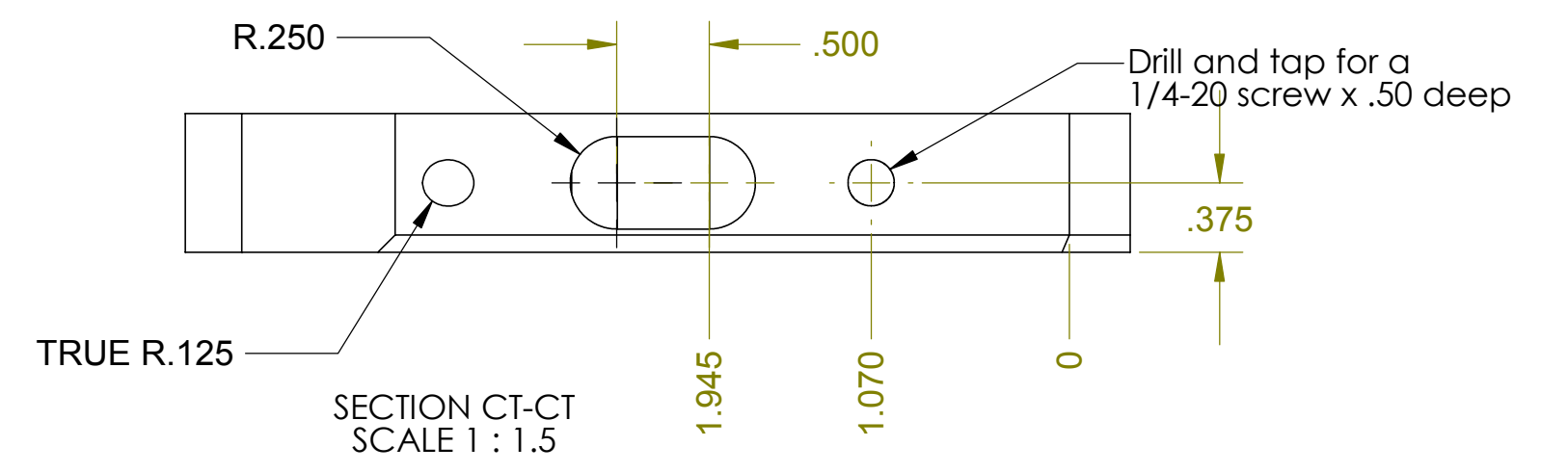
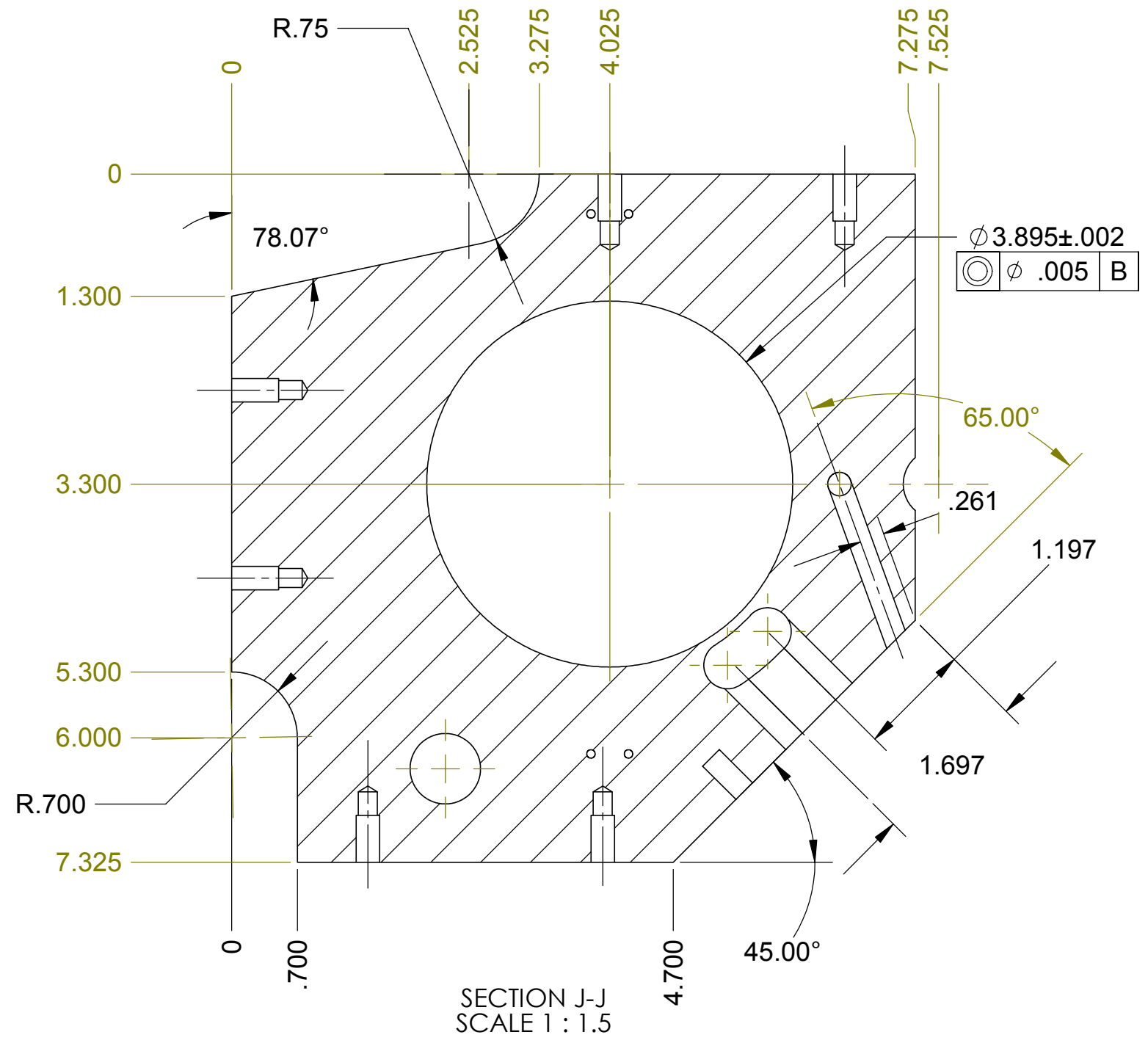



.093 X 45.00°
typ all edges
this surface

DETAIL Q
SCALE 5:1



UNLESS OTHERWISE SPECIFIED:		DATE	NAME	CALIFORNIA INSTITUTE OF TECHNOLOGY MASSACHUSETTS INSTITUTE OF TECHNOLOGY	
DIMENSIONS ARE IN INCHES		DRAWN	4/02		Hardham
TOLERANCES:		REDRAWN	6/7/02		Kern
.XX ± 0.020"		CHECKED	2/9/03		Kern
.XXX ± 0.005"					
ANGULAR ± 30'					
MATERIAL:		COMMENTS:		SYSTEM LASTI SUB-SYSTEM HEPI NEXT ASSY PART NAME TOP FOUNDATION PLATE SIZE DWG. NO. D020290-A-E sheet 1 of 2 SCALE: 1:1 unless noted	
304 L		1 Required for each actuator		REV A	
FINISH 32 RMS unless noted					



UNLESS OTHERWISE SPECIFIED:		DATE	NAME	 CALIFORNIA INSTITUTE OF TECHNOLOGY MASSACHUSETTS INSTITUTE OF TECHNOLOGY	
DIMENSIONS ARE IN INCHES		DRAWN	4/02		Hardham
TOLERANCES:		REDRAWN	Fall 02		Hammond
.XX ± 0.020"		CHECKED	2/9/03		Kern
.XXX ± 0.005"				SYSTEM LASTI	
ANGULAR ± 30'				SUB-SYSTEM HEPI	
MATERIAL				NEXT ASSY	
FINISH 32 RMS unless noted		COMMENTS:		PART NAME Top Foundation Plate details	
				SIZE DWG. NO. D020290-A-E sheet 2 of 2	
				REV A	
				SCALE: 1:1 unless noted	