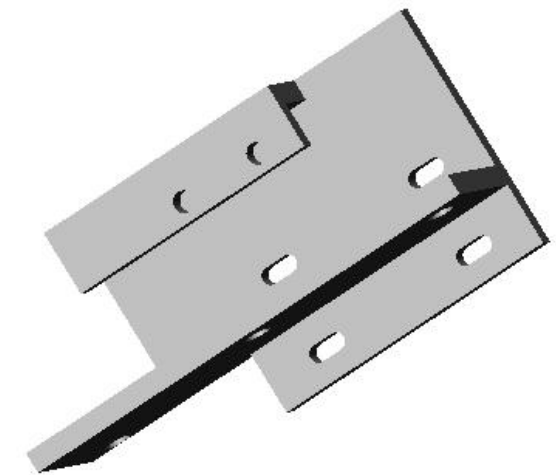


REVISIONS		DATE	APPROVED
ZONE	REV	DESCRIPTION	

- NOTES: UNLESS OTHERWISE SPECIFIED
1. REMOVE ALL BURRS AND BREAK SHARP EDGES TO A MAXIMUM OF .015
 2. PART NUMBER (DRAWING NO., DASH NO., REVISION NO., SERIAL NO.) TO BE CLEARLY MARKED ON THE PART ITSELF
 3. PAINT:
ALL VISIBLE SURFACES
MEDIUM BLUE SHERWIN WILLIAMS (POLANE (R) T-PLUS
POLYURETHANE ENAMEL) #SW-F63TX-L-2822-5864
PRIME WITH SHERWIN WILLIAMS INDUSTRIAL WASH PRIMER P60G2
 4. BOTH TAPPED AND THRU HOLES WILL BE PLUGGED DURING APPLICATION.
 5. FULL WELDED CONSTRUCTION. STRESS RELIEVE BEFORE FINISH MACHINING.



UNLESS OTHERWISE SPECIFIED	DATE	NAME	LIGO CALIFORNIA INSTITUTE OF TECHNOLOGY MASSACHUSETTS INSTITUTE OF TECHNOLOGY
DECIMALS .X ± .06	DRAWN K. MASON	5/17/02	
ANGLES .XX ± .01	CHECKED		TITLE:
.XXX ± .005	ENG APPR		HORIZONTAL ACTUATOR BRACKET
INTERPRET GEOMETRIC TOLERANCING PER:	MSG APPR		LEFT, EM ACTUATOR ASSEMBLY
MATERIAL 1018 CRS	Q.A.		SIZE DWG. NO. REV
FINISH SEE NOTES	COMMENTS		D D020277-A-D A
DO NOT SCALE DRAWING			SCALE: 1:1 SHEET 1 OF 1