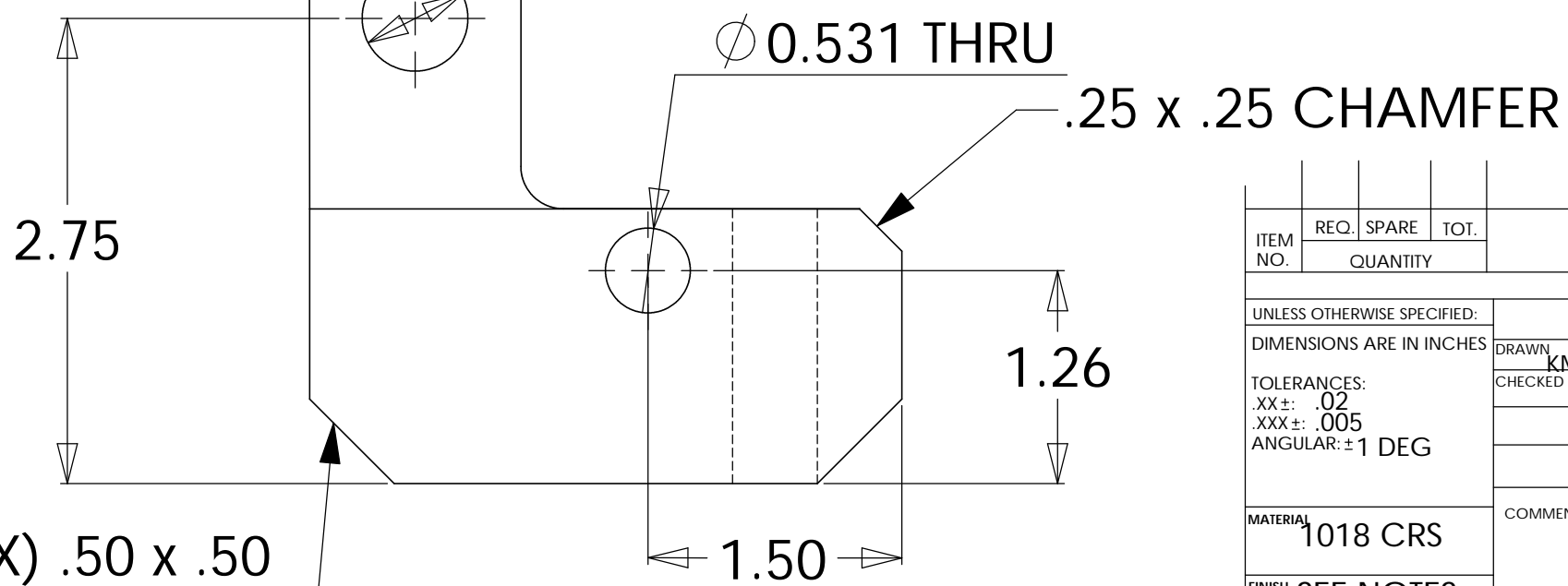
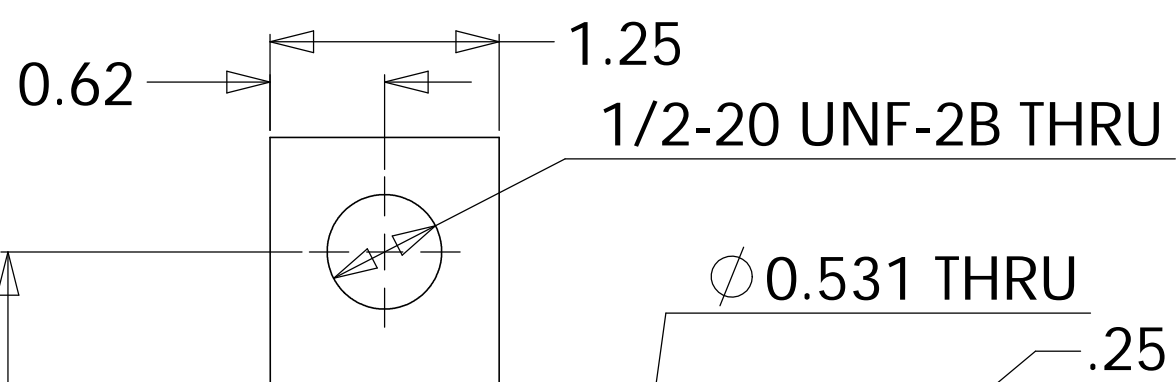
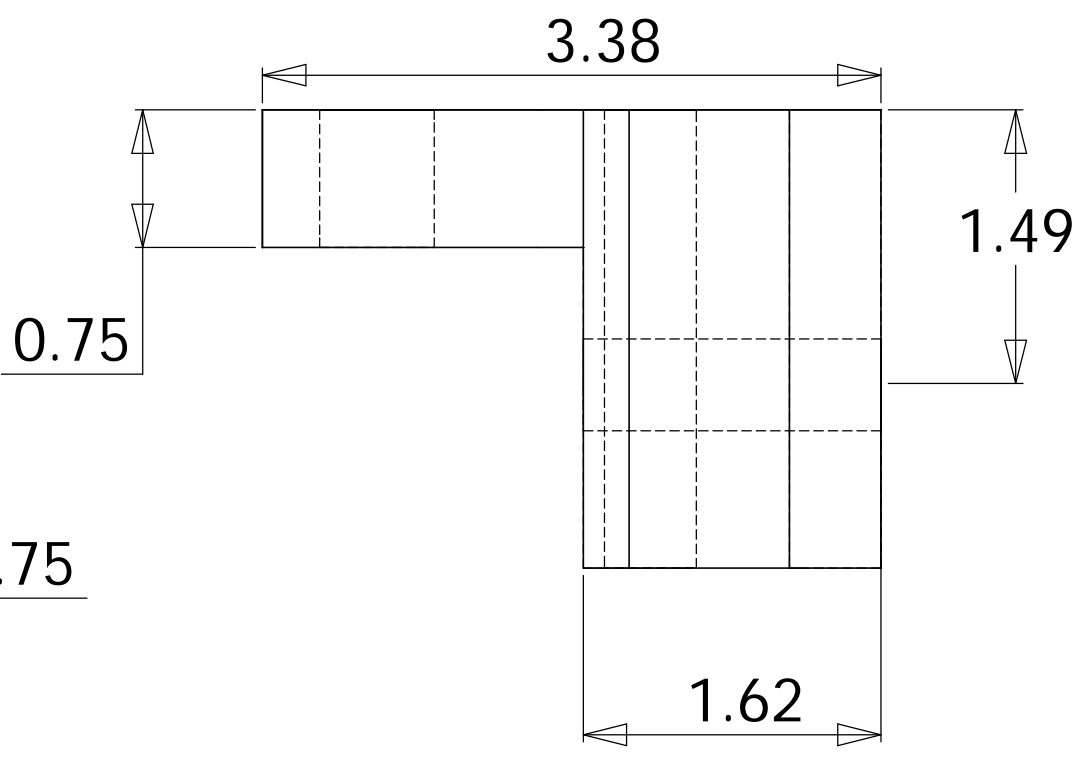
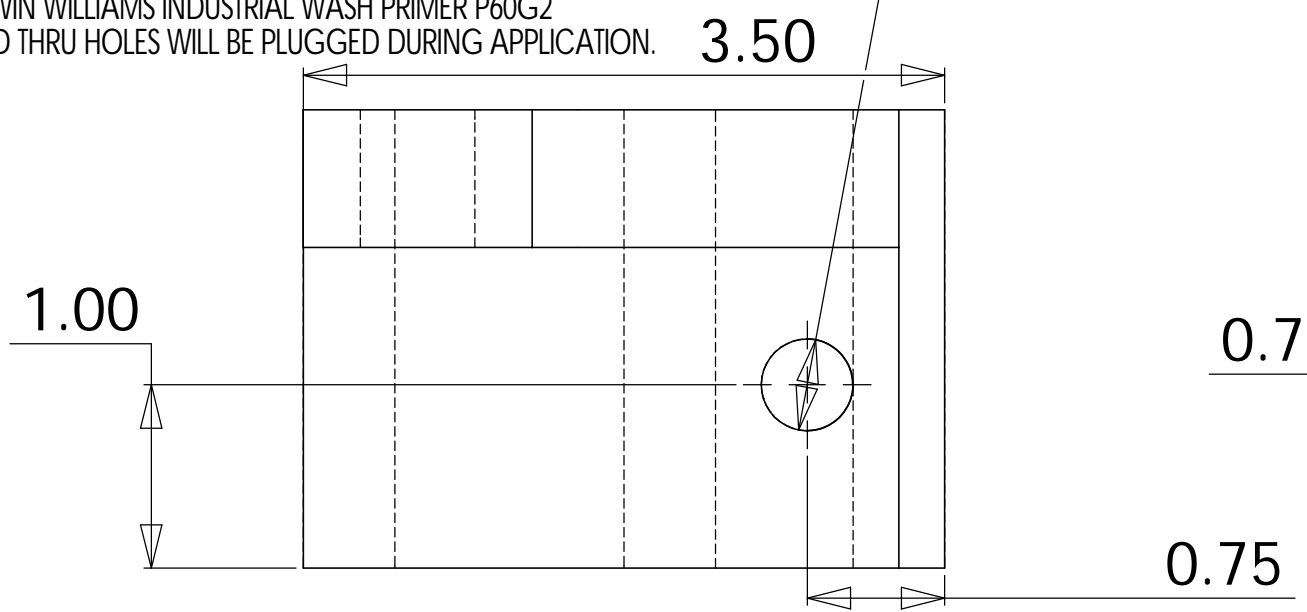


- NOTES: UNLESS OTHERWISE SPECIFIED
1. REMOVE ALL BURRS AND BREAK SHARP EDGES TO A MAXIMUM OF .015
  2. PART NUMBER (DRAWING NO., DASH NO., REVISION NO., SERIAL NO.) TO BE CLEARLY MARKED ON THE PART ITSELF
  3. PAINT:  
ALL VISIBLE SURFACES  
MEDIUM BLUE SHERWIN WILLIAMS (POLANE (R) T-PLUS POLYURETHANE ENAMEL) #SW-F63TX-L-2822-5864  
PRIME WITH SHERWIN WILLIAMS INDUSTRIAL WASH PRIMER P60G2
  4. BOTH TAPPED AND THRU HOLES WILL BE PLUGGED DURING APPLICATION.

REV.	DATE	DCN #	DRAWING TREE #

1/2-20 UNF-2B THRU



ITEM NO.	REQ. QUANTITY	SPARE	TOT.	PART NUMBER	DESCRIPTION	SUPPLIER
UNLESS OTHERWISE SPECIFIED:						
DIMENSIONS ARE IN INCHES				DRAWN	DATE	NAME
TOLERANCES:				KMASON	5/29/02	
.XX ±: .02				CHECKED		
.XXX ±: .005						
ANGULAR: ±1 DEG						
MATERIAL				PARTS LIST		
1018 CRS				CALIFORNIA INSTITUTE OF TECHNOLOGY MASSACHUSETTS INSTITUTE OF TECHNOLOGY		
FINISH				SYSTEM		
SEE NOTES				SUB-SYSTEM		
				NEXT ASSY		
				PRE-ISOLATOR ASSEMBLY		
				PART NAME		
				OFFSET CLAMP		
SIZE		DWG. NO.		REV		
B		D020270-A-D		A		
SCALE: 1:1		D020270-A.SLDPRT		SHEET 1 OF 1		