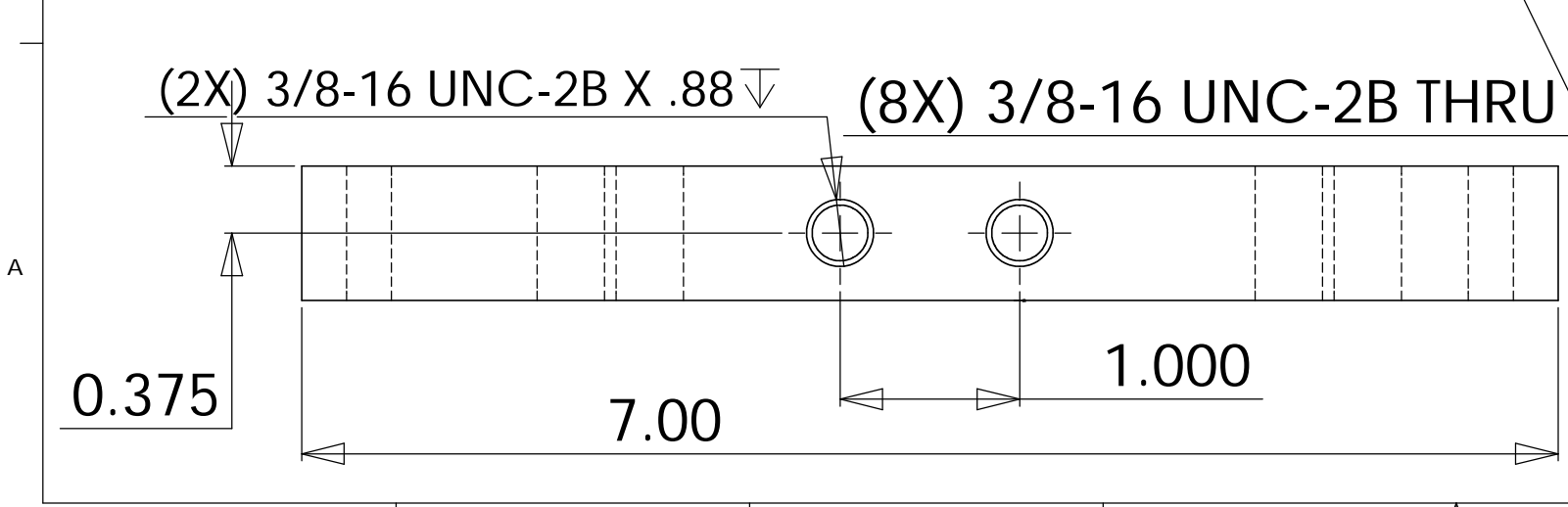
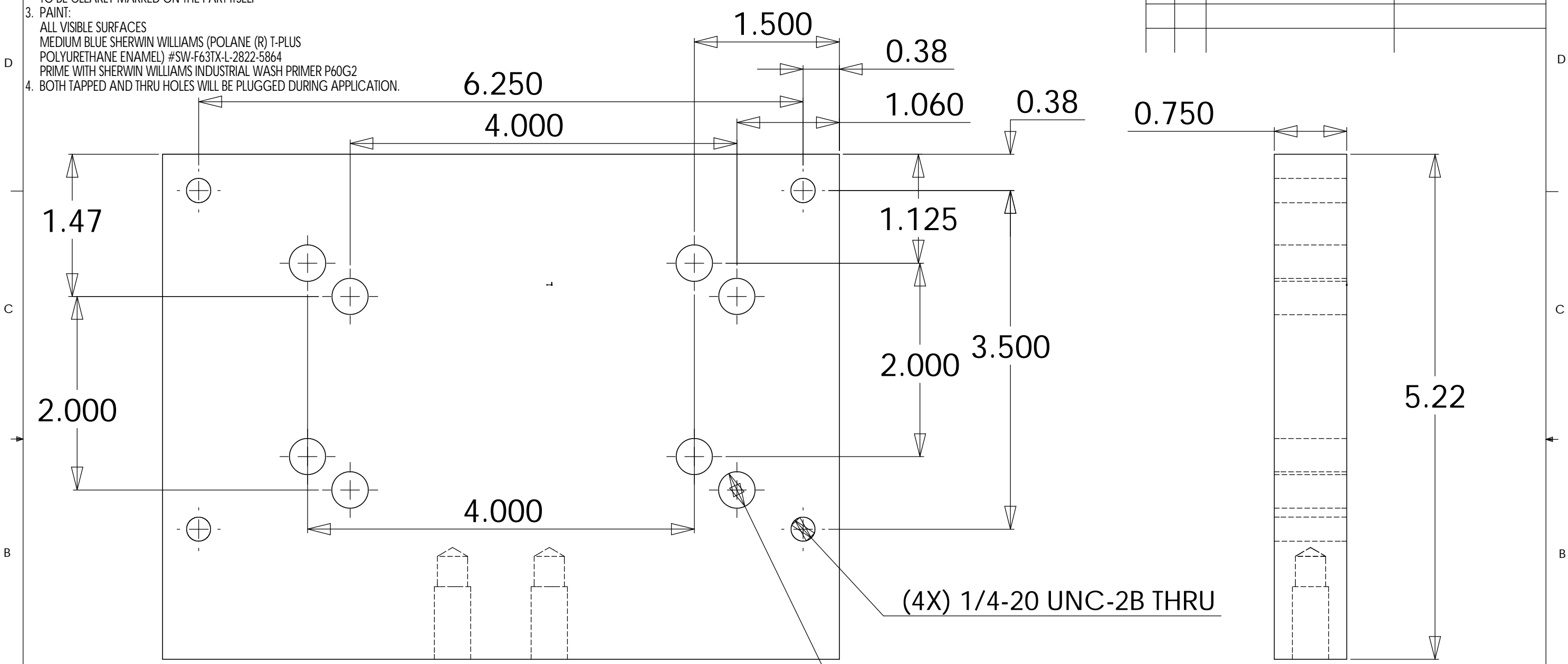


- NOTES: UNLESS OTHERWISE SPECIFIED
- REMOVE ALL BURRS AND BREAK SHARP EDGES TO A MAXIMUM OF .015
 - PART NUMBER (DRAWING NO., DASH NO., REVISION NO., SERIAL NO.) TO BE CLEARLY MARKED ON THE PART ITSELF
 - PAINT:
ALL VISIBLE SURFACES
MEDIUM BLUE SHERWIN WILLIAMS (POLANE (R) T-PLUS
POLYURETHANE ENAMEL) #SW-F63TX-L-2822-5864
PRIME WITH SHERWIN WILLIAMS INDUSTRIAL WASH PRIMER P60G2
 - BOTH TAPPED AND THRU HOLES WILL BE PLUGGED DURING APPLICATION.

REV.	DATE	DCN #	DRAWING TREE #



ITEM NO.	REQ. QUANTITY	SPARE	TOT.	PART NUMBER	DESCRIPTION	SUPPLIER

UNLESS OTHERWISE SPECIFIED:		DATE	NAME	CALIFORNIA INSTITUTE OF TECHNOLOGY MASSACHUSETTS INSTITUTE OF TECHNOLOGY	
DIMENSIONS ARE IN INCHES		05/20/02	KMASON		
TOLERANCES:		CHECKED		SYSTEM	
.XX ±: .02				SUB-SYSTEM	
.XXX ±: .005				NEXT ASSY: EM ACTUATOR ASSEMBLY	
ANGULAR: ± 1 DEG				PART NAME: BASE PLATE	
MATERIAL: 1018 CRS	COMMENTS:		SIZE: B	DWG. NO.: D020253-A-D	REV: A
FINISH: SEE NOTES			SCALE: 1:1	D020253-A.SLDPRP	SHEET 1 OF 1