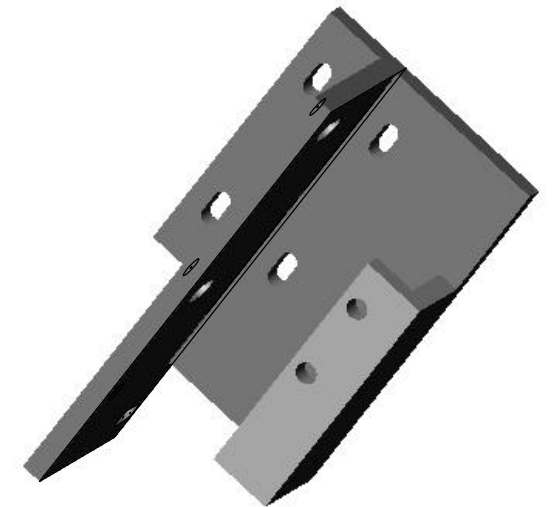


REVISIONS				
ZONE	REV	DESCRIPTION	DATE	APPROVED

(3X) 0.56 ϕ SLOT THRU

(4X) .401 ϕ SLOT THRU

(2X) 1/2-13 UNC-2B THRU



- NOTES: UNLESS OTHERWISE SPECIFIED
1. REMOVE ALL BURRS AND BREAK SHARP EDGES TO A MAXIMUM OF .015
 2. PART NUMBER (DRAWING NO., DASH NO., REVISION NO., SERIAL NO.) TO BE CLEARLY MARKED ON THE PART ITSELF
 3. PAINT:
ALL VISIBLE SURFACES
MEDIUM BLUE SHERWIN WILLIAMS (POLANE (R) T-PLUS POLYURETHANE ENAMEL) #SW-F63TX-L-2822-5864
PRIME WITH SHERWIN WILLIAMS INDUSTRIAL WASH PRIMER P60G2
 4. BOTH TAPPED AND THRU HOLES WILL BE PLUGGED DURING APPLICATION.
 5. FULL WELDED CONSTRUCTION. STRESS RELIEVE BEFORE FINISH MACHINING.

UNLESS OTHERWISE SPECIFIED		DATE	NAME	LIGO CALIFORNIA INSTITUTE OF TECHNOLOGY MASSACHUSETTS INSTITUTE OF TECHNOLOGY
DECIMALS	ANGLES	DRAWN	K. MASON	
.X \pm .06		CHECKED		
.XX \pm .01	\pm 1	ENG APPR		
.XXX \pm .005		MFG APPR		
REFERENCE GEOMETRIC TOLERANCING PER:		Q.A.		
MATERIAL	1018 CRS	COMMENTS		
FINISH	SEE NOTES			
DO NOT SCALE DRAWING				

SIZE	DWG. NO.	REV
D	D020252-A-D	A
SCALE: 1:1		SHEET 1 OF 1