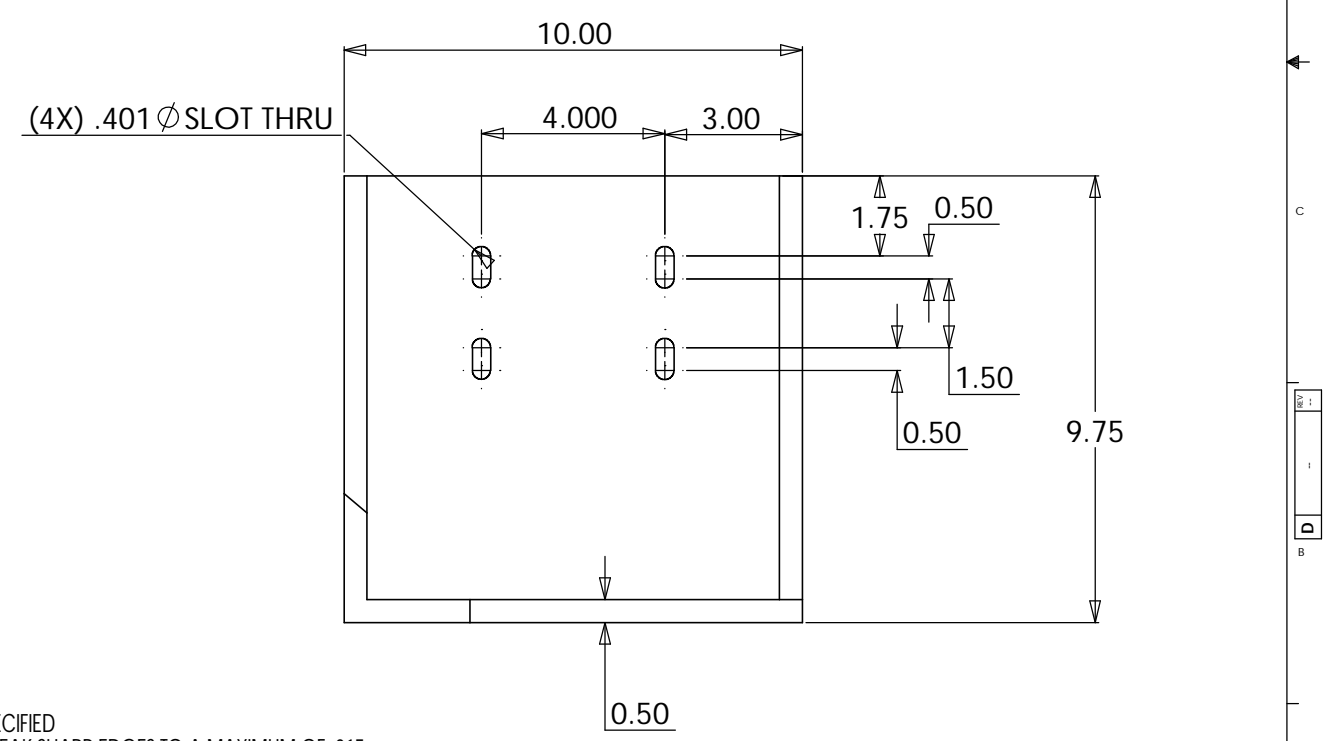
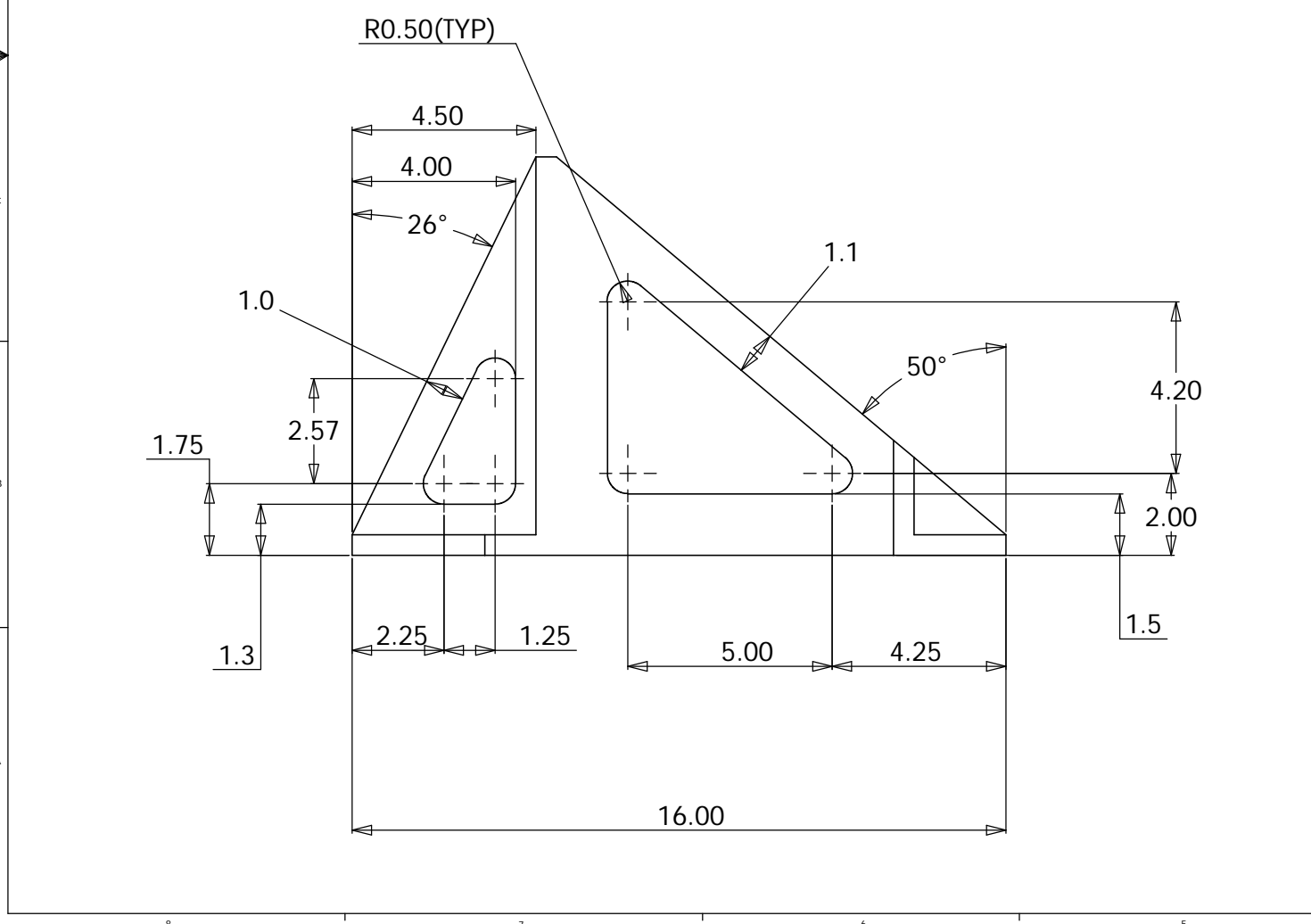
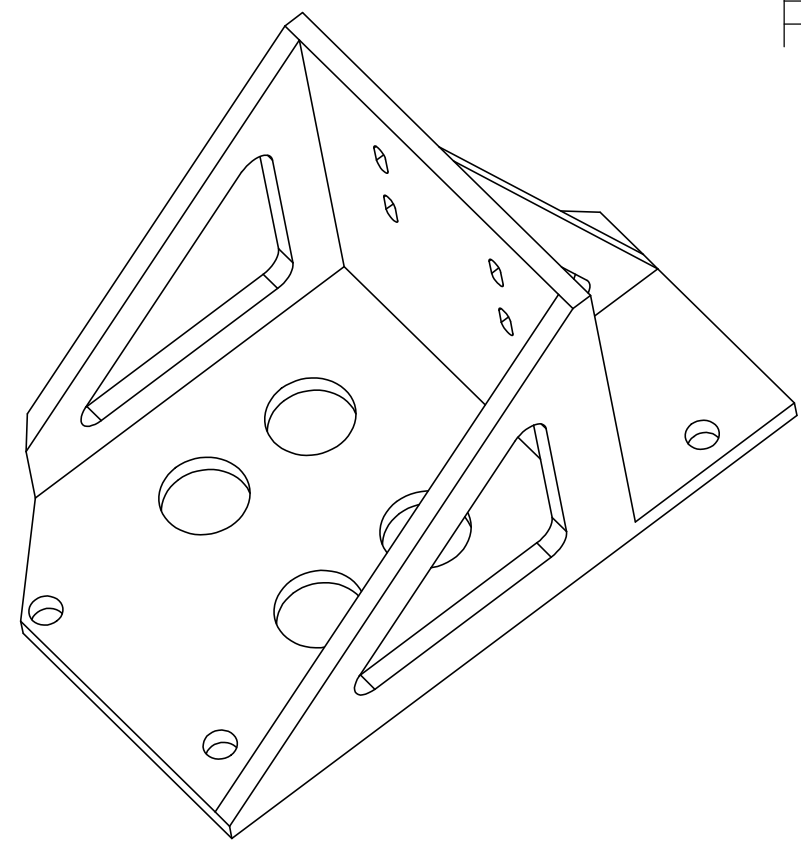
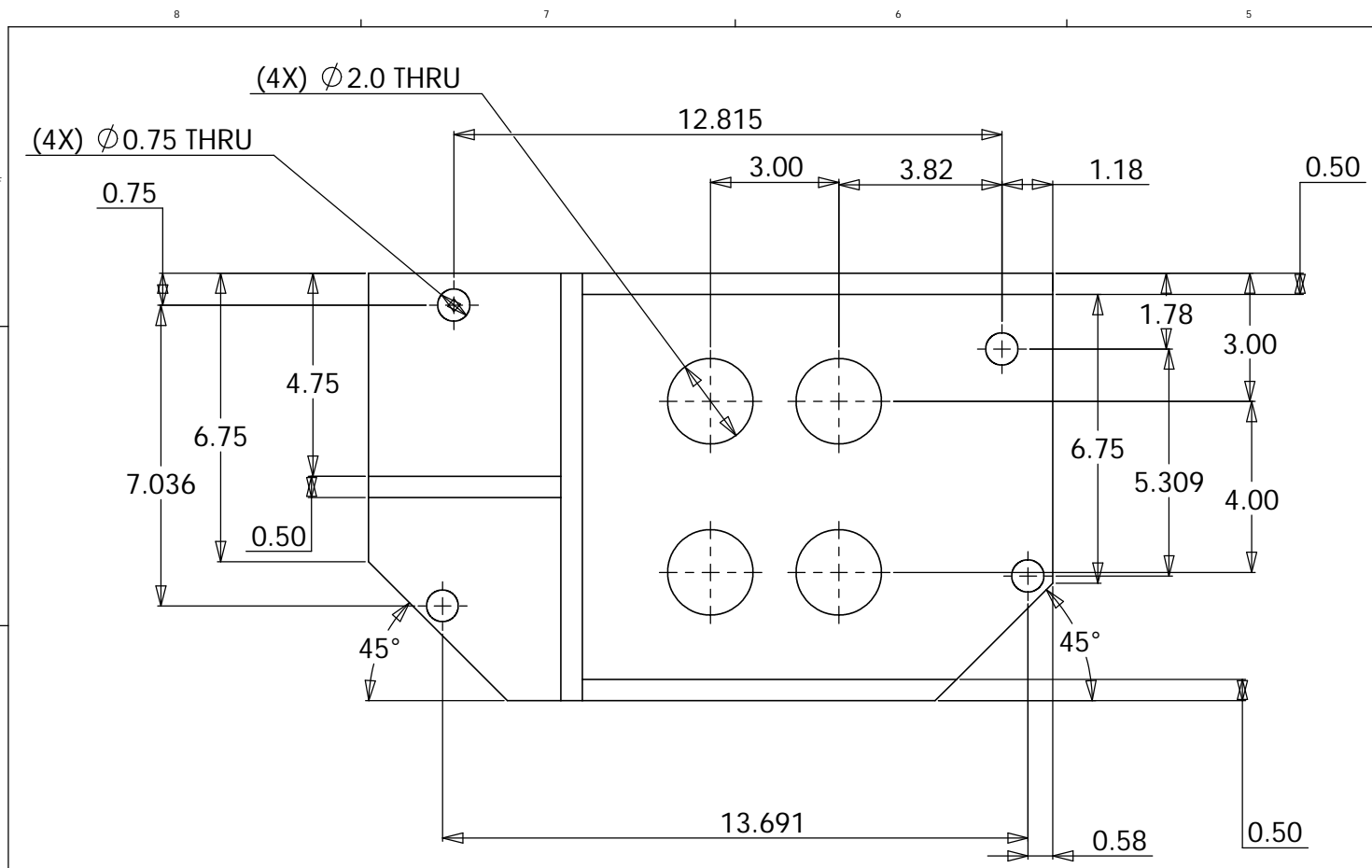


REVISIONS		DATE	APPROVED
ZONE	REV	DESCRIPTION	



- NOTES: UNLESS OTHERWISE SPECIFIED
1. REMOVE ALL BURRS AND BREAK SHARP EDGES TO A MAXIMUM OF .015
 2. PART NUMBER (DRAWING NO., DASH NO., REVISION NO., SERIAL NO.) TO BE CLEARLY MARKED ON THE PART ITSELF
 3. PAINT:
ALL VISIBLE SURFACES
MEDIUM BLUE SHERWIN WILLIAMS (POLANE (R) T-PLUS
POLYURETHANE ENAMEL) #SW-F63TX-L-2822-5864
PRIME WITH SHERWIN WILLIAMS INDUSTRIAL WASH PRIMER P60G2
 4. BOTH TAPPED AND THRU HOLES WILL BE PLUGGED DURING APPLICATION.
 5. FULL WELDED CONSTRUCTION. STRESS RELIEVE BEFORE FINISH MACHINING.

UNLESS OTHERWISE SPECIFIED	DATE	NAME	LIGO CALIFORNIA INSTITUTE OF TECHNOLOGY MASSACHUSETTS INSTITUTE OF TECHNOLOGY
DECIMALS ANGLES	DRAWN	K. MASON	
.X ± .06	CHECKED		
.XX ± .01	ENG APPR		
.XXX ± .005	MSG APPR		
INTERPRET GEOMETRIC TOLERANCING PER:	Q.A.		
MATERIAL	COMMENTS		
1018 CRS			
FINISH	SEE NOTES		
DO NOT SCALE DRAWING			
TITLE:			LOWER WELDMENT EM ACTUATOR ASSEMBLY
SIZE	DWG. NO.	REV	
D	D020251-A-D	A	
SCALE: 1:2			SHEET 1 OF 1