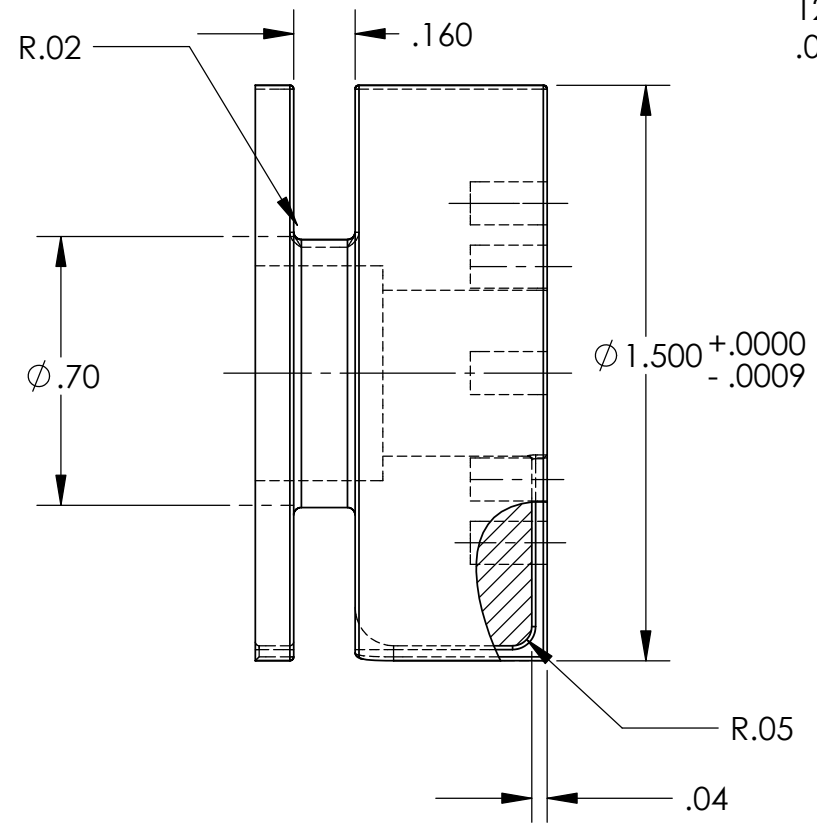
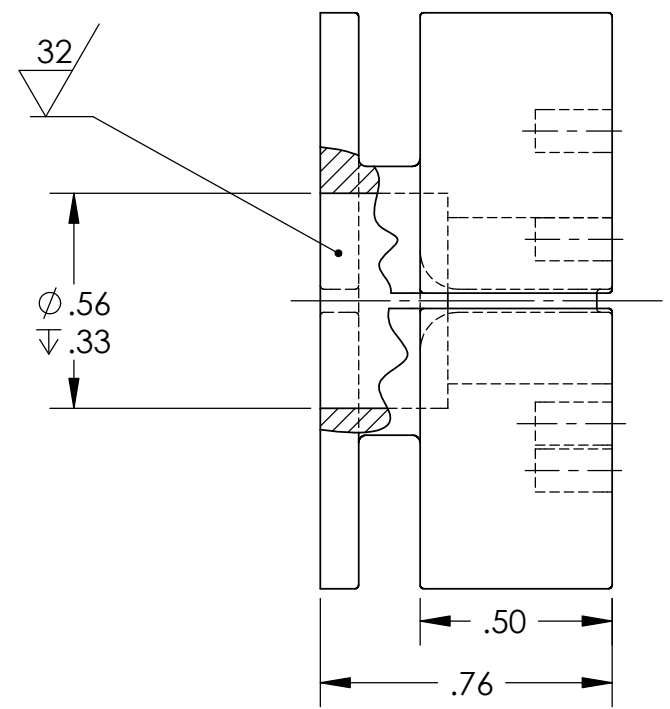


REV.	DATE	DCN #	DRAWING TREE #
04	07/16/02	FINAL CHECK AND COMMENTS BY CIT AND LARRY JONES	
05	12/03/02	DETAILED EXTRA LARGE RADII AND REVISED BORDER	
06	FEB03	DEPTH OF SLOT, MISSING DIMENSION	
07	02/20/03	INCREASED RADII AND EXTRA VIEWS	
08	02/26/03	SURFACE FINISH ADDED	
09	SEPT 03	INCLUDES EMBEDDED .PDF (USING PUSH BUTTON PDF)	

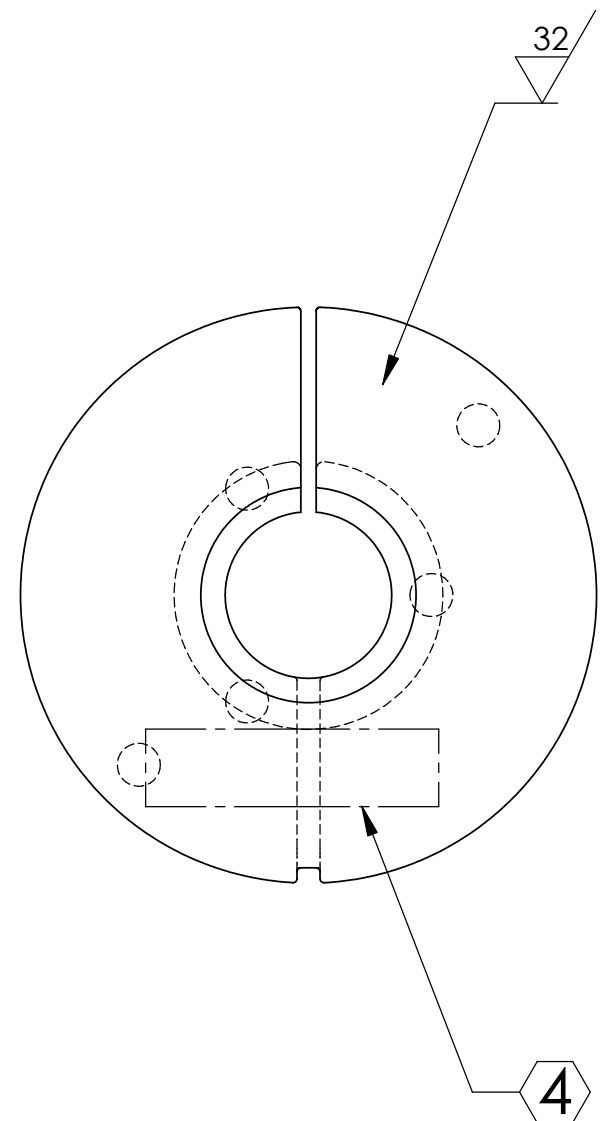
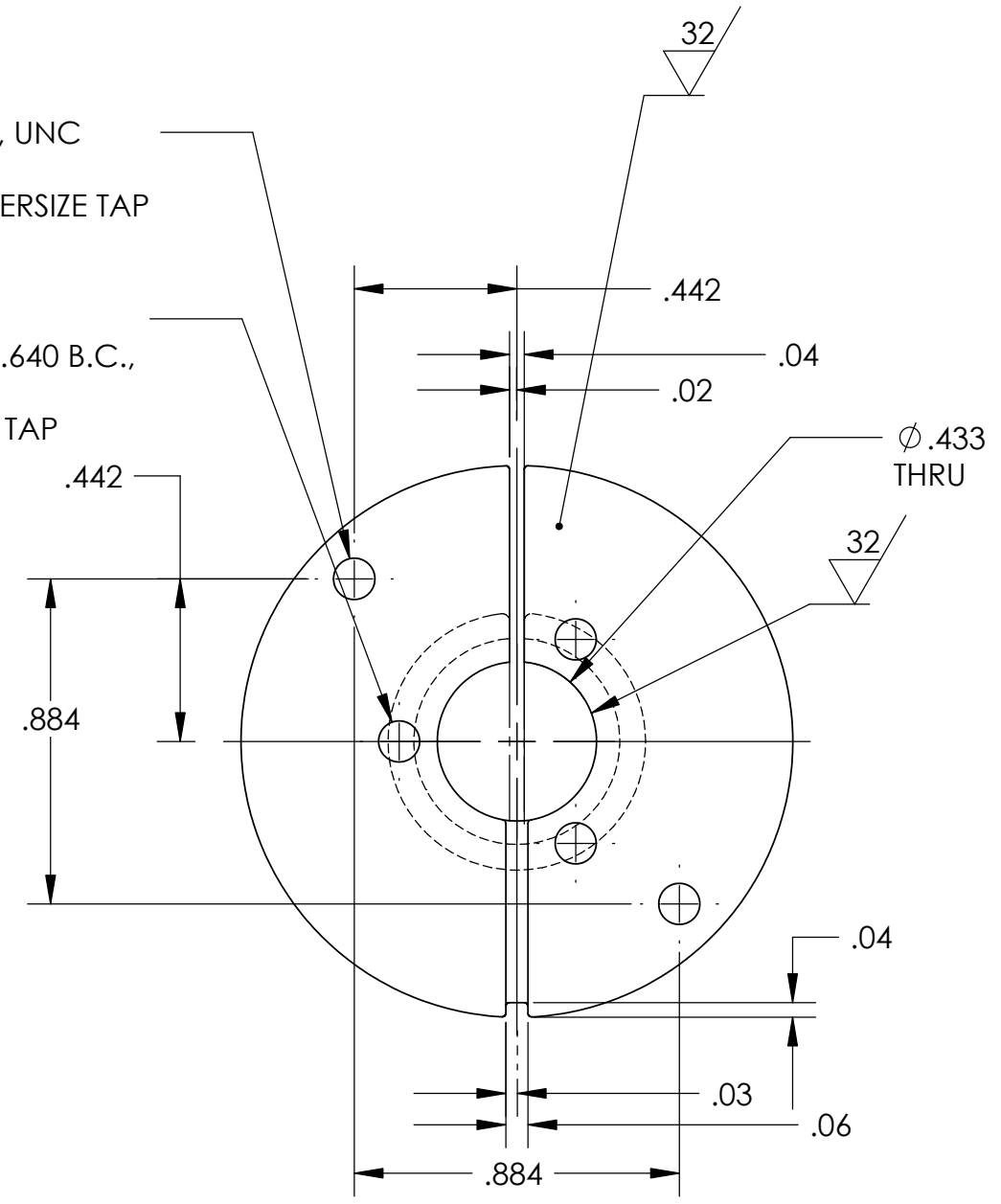


D020188_Coilformer.sat



2X, 4-40, UNC
 ▽0.20
 .005 OVERSIZE TAP

3X, 4-40, UNC
 ▽0.20 ON Ø0.640 B.C.,
 120° APART
 .005 OVERSIZE TAP

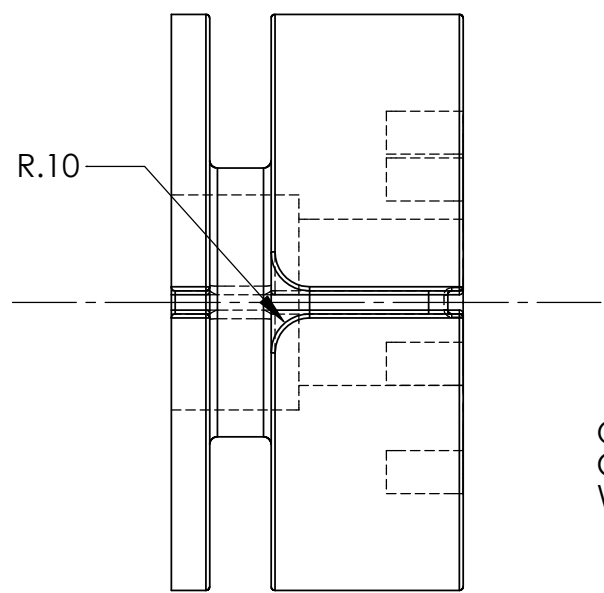


NOTES: (UNLESS OTHERWISE SPECIFIED)
 1. DIMENSIONS IN INCHES.
 2. REMOVE ALL SHARP EDGES, R.02 MIN.
 3. ALL MACHINING FLUIDS SHALL BE WATER SOLUBLE AND FREE OF SULFUR, CHLORINE AND SILICONE, SUCH AS CINCINNATI MILACRON'S CIMTECH 410 (STAINLESS STEEL)
 4. ETCH OR STAMP DRAWING PART NUMBER ON NOTED SURFACE OF PART AND THEN A THREE DIGIT SERIAL NUMBER. SERIAL NUMBERS START AT 016 FOR THE FIRST PART AND PROCEED CONSECUTIVELY. USE .07" HIGH CHARACTERS. EXAMPLE: D020188-016

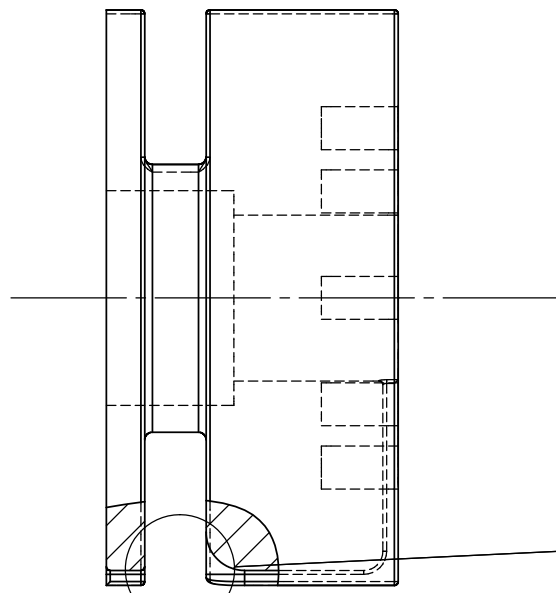
	NAME	DATE
DRAWN	CIT	02/26/2003
CHECKED	MPL	02/26/2003
CHECKED	RAJ	

CALIFORNIA INSTITUTE OF TECHNOLOGY MASSACHUSETTS INSTITUTE OF TECHNOLOGY IGR, GLASGOW UNIVERSITY GEO 600 GROUP	
SYSTEM	ADVANCED LIGO
SUB-SYSTEM	SUS
NEXT ASSY	MC: COIL
PART NAME	COIL FORMER
SIZE	DWG. NO. D020188
FINISH	16 µinch ALL OVER
SCALE: NTS	PROJECTION:
SHEET 1 OF 2	

REV.	DATE	DCN #	DRAWING TREE #

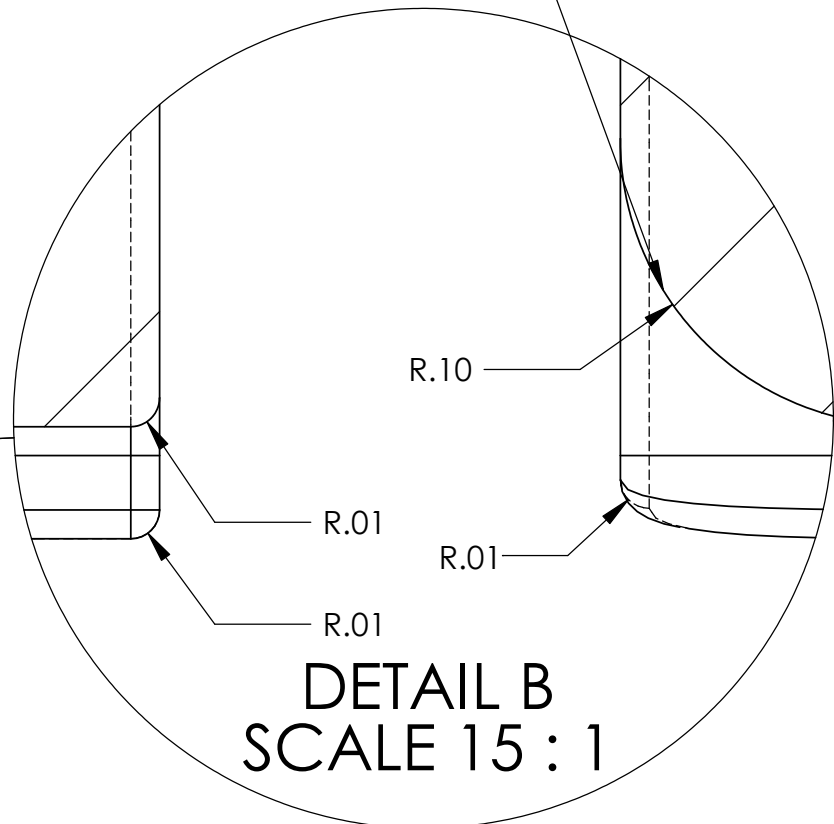


PLAN VIEW

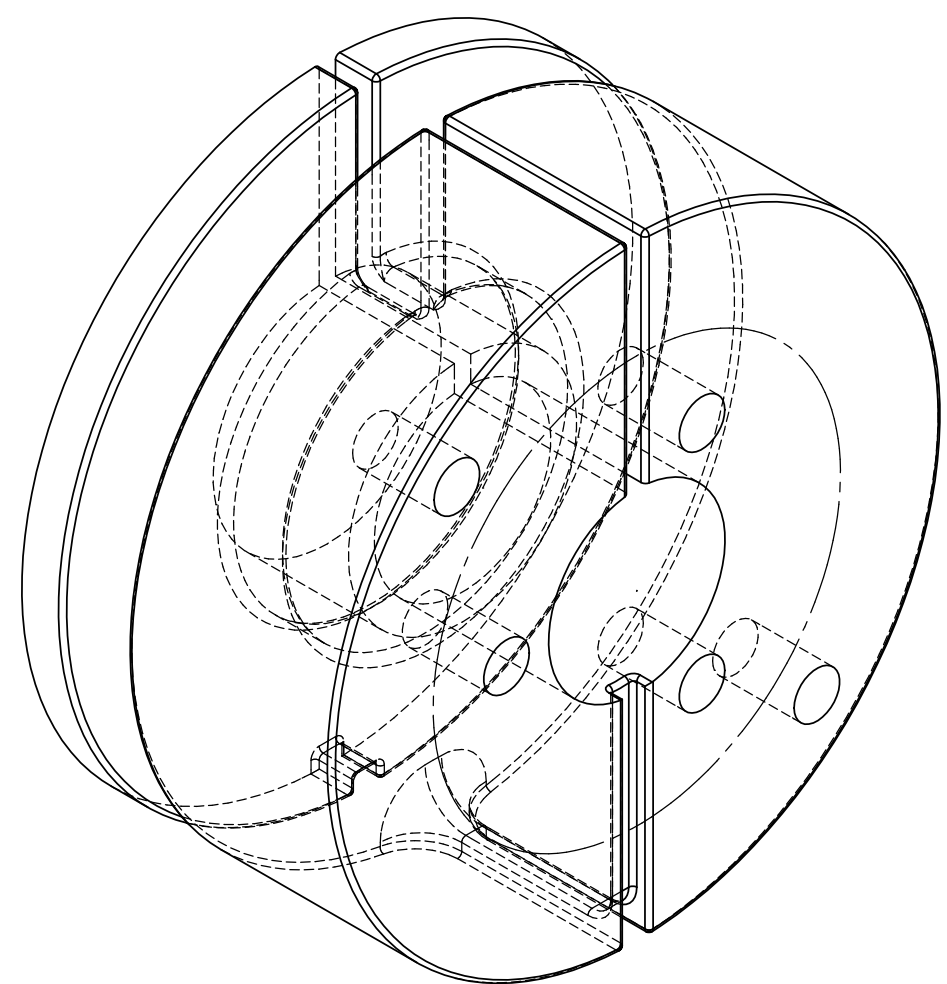


FRONT VIEW


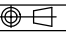
ONCE RADIUS HAS BEEN CREATED SMOOTH RADIUS WITH A STONE.



DETAIL B
SCALE 15 : 1



ISOMETRIC VIEW
SCALE 3:1

NOTES: (UNLESS OTHERWISE SPECIFIED)		PARTS LIST		 CALIFORNIA INSTITUTE OF TECHNOLOGY MASSACHUSETTS INSTITUTE OF TECHNOLOGY IGR, GLASGOW UNIVERSITY GEO 600 GROUP																
1. DIMENSIONS IN INCHES.	2. REMOVE ALL SHARP EDGES, R.02 MIN.	3. ALL MACHINING FLUIDS SHALL BE WATER SOLUBLE AND FREE OF SULFUR, CHLORINE AND SILICONE, SUCH AS CINCINNATI MILACRON'S CIMTECH 410 (STAINLESS STEEL)	<table border="1"> <tr> <th>NAME</th> <th>DATE</th> </tr> <tr> <td>DRAWN CIT</td> <td>02/26/03</td> </tr> <tr> <td>CHECKED MPL</td> <td>02/26/03</td> </tr> <tr> <td>CHECKED RAJ</td> <td> </td> </tr> </table>		NAME	DATE	DRAWN CIT	02/26/03	CHECKED MPL	02/26/03	CHECKED RAJ		<table border="1"> <tr> <td>SYSTEM</td> <td>ADVANCED LIGO</td> </tr> <tr> <td>SUB-SYSTEM</td> <td>SUS</td> </tr> <tr> <td>NEXT ASSY</td> <td>MC: COIL</td> </tr> <tr> <td>PART NAME</td> <td>COIL FORMER</td> </tr> </table>	SYSTEM	ADVANCED LIGO	SUB-SYSTEM	SUS	NEXT ASSY	MC: COIL	PART NAME
NAME	DATE																			
DRAWN CIT	02/26/03																			
CHECKED MPL	02/26/03																			
CHECKED RAJ																				
SYSTEM	ADVANCED LIGO																			
SUB-SYSTEM	SUS																			
NEXT ASSY	MC: COIL																			
PART NAME	COIL FORMER																			
DIMENSIONS ARE IN INCHES TOLERANCES: .XX ± 0.01 .XXX ± 0.005 ANGULAR ± 0.5 °			<table border="1"> <tr> <td>MATERIAL</td> <td>SEE SHEET 1</td> </tr> <tr> <td>FINISH</td> <td>SEE SHEET 1</td> </tr> </table>	MATERIAL	SEE SHEET 1	FINISH	SEE SHEET 1	<table border="1"> <tr> <td>SIZE</td> <td>DWG. NO.</td> <td>REV.</td> </tr> <tr> <td>B</td> <td>D020188</td> <td>09</td> </tr> </table>	SIZE	DWG. NO.	REV.	B	D020188	09						
MATERIAL	SEE SHEET 1																			
FINISH	SEE SHEET 1																			
SIZE	DWG. NO.	REV.																		
B	D020188	09																		
SCALE: NTS PROJECTION:  SHEET 2 OF 2				FILE NAME/LOCATION:																