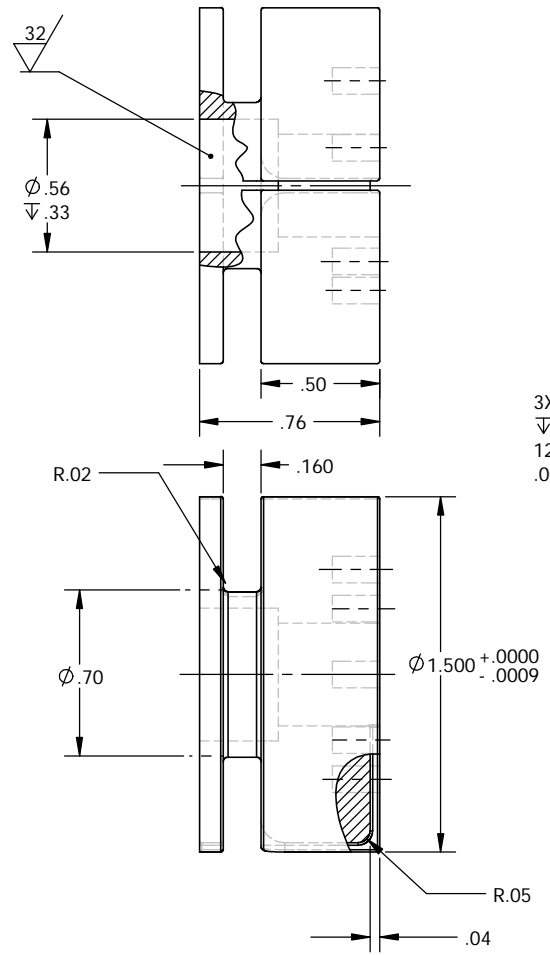
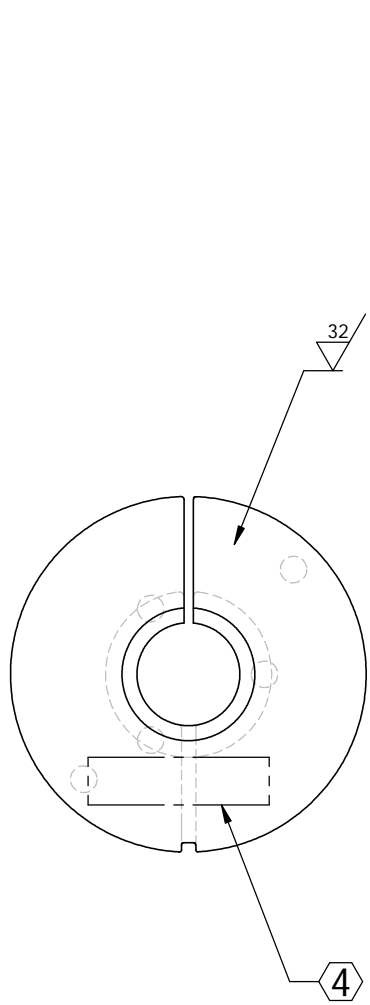
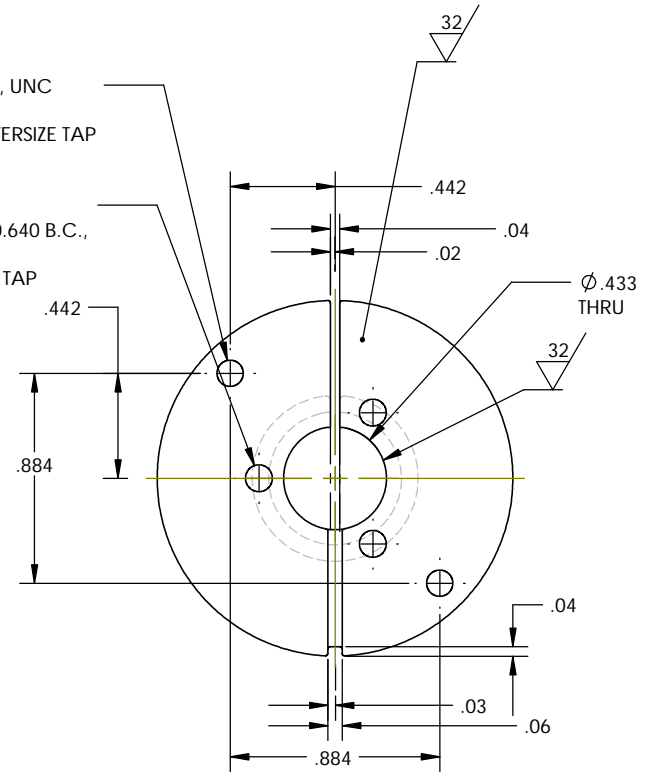


REV.	DATE	DCN #	DRAWING TREE #
04	07/16/02		
05	12/03/02	FINAL CHECK AND COMMENTS BY CIT AND LARRY JONES	
06	FEB03	DETAILED EXTRA LARGE RADII AND REVISED BORDER	
07	02/20/03	DEPTH OF SLOT, MISSING DIMENSION	
08	02/26/03	INCREASED RADII AND EXTRA VIEWS	
		SURFACE FINISH ADDED	



2X, 4-40, UNC
 $\nabla 0.20$
 .005 OVERSIZE TAP

3X, 4-40 UNC
 $\nabla 0.20$ ON $\phi 0.640$ B.C.,
 120° APART
 .005 OVERSIZE TAP



NOTES: (UNLESS OTHERWISE SPECIFIED)			NAME		DATE	 CALIFORNIA INSTITUTE OF TECHNOLOGY MASSACHUSETTS INSTITUTE OF TECHNOLOGY
1. DIMENSIONS IN INCHES.	DRAWN	CIT			02/26/2003	
2. REMOVE ALL SHARP EDGES, R.02 MIN.	CHECKED	MPL			02/26/2003	
3. ALL MACHINING FLUIDS SHALL BE WATER SOLUBLE AND FREE OF SULFUR, CHLORINE AND SILICONE, SUCH AS CINCINNATI MILACRON'S CIMTECH #10 (STAINLESS STEEL).	CHECKED	RAJ				
4. ETCH OR STAMP DRAWING PART NUMBER ON NOTED SURFACE OF PART AND THEN A THREE DIGIT SERIAL NUMBER. SERIAL NUMBERS START AT 016 FOR THE FIRST PART AND PROCEED CONSECUTIVELY. USE 07" HIGH CHARACTERS. EXAMPLE: D020188-016	UNLESS OTHERWISE SPECIFIED		SYSTEM		ADVANCED LIGO	
	DIMENSIONS ARE IN INCHES TOLERANCES:		SUB-SYSTEM		SUS	
	.XX ± 0.01		NEXT ASSY		MC: COIL	
	.XXX ± 0.005		PART NAME		COIL FORMER	
	ANGULAR: ± 0.5		SIZE DWG. NO.		D020188	
MATERIAL	SEE COVER SHEET		FINISH		B	
		16 μinch ALL OVER		SCALE:	NIS	
				PROJECTION:	1	
				SHEET 1 OF 2	08	

SolidWorks Educational License
Instructional Use Only

8

7

6

5

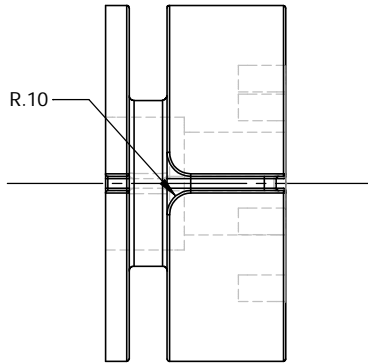
4

3

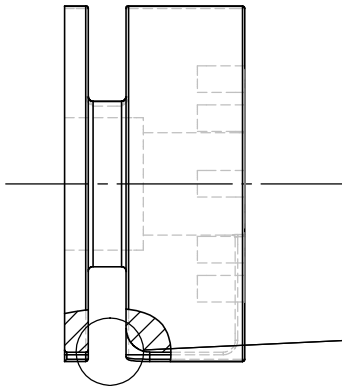
2

1

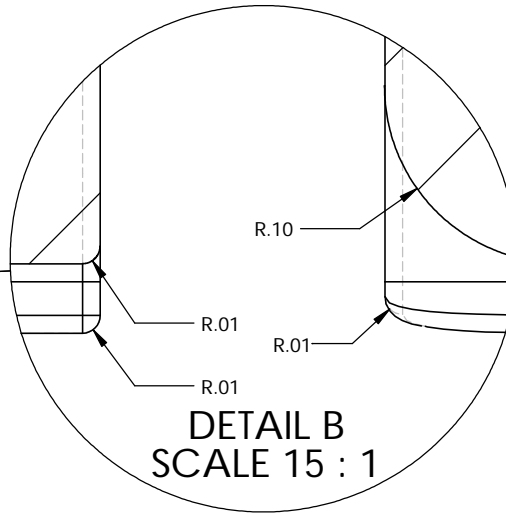
REV.	DATE	DCN #	DRAWING TREE #



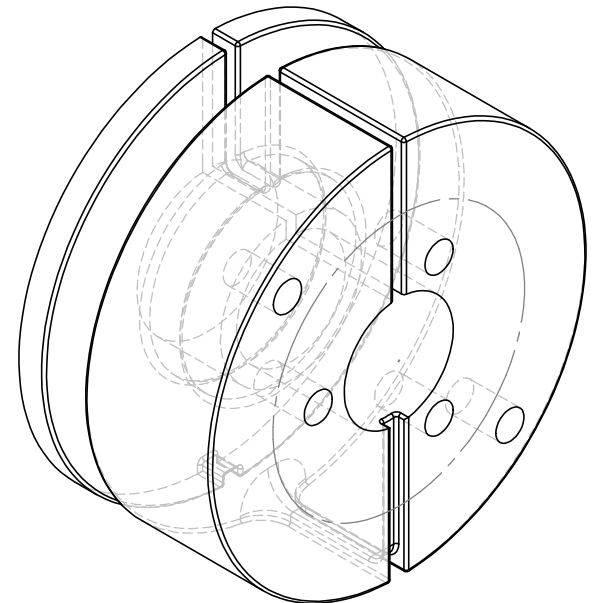
PLAN VIEW





FRONT VIEW



DETAIL B
SCALE 15 : 1



ISOMETRIC VIEW
SCALE 3:1

PARTS LIST		
NAME	DATE	
DRAWN: CIT	02/26/03	 CALIFORNIA INSTITUTE OF TECHNOLOGY MASSACHUSETTS INSTITUTE OF TECHNOLOGY
CHECKED: MPL	02/26/03	
CHECKED: RAJ		
DIMENSIONS ARE IN INCHES TOLERANCES: .XX ± 0.01 .XXX ± 0.005 ANGULAR ± 0.5°		
MATERIAL: SEE SHEET 1		SYSTEM ADVANCED LIGO SUB-SYSTEM SUS NEXT ASSY MC: COIL PART NAME COIL FORMER
FINISH: SEE SHEET 1	SIZE: B DWG. NO: D020188 REV: 08	SCALE: NTS PROJECTION:  SHEET 2 OF 2

NOTES: (UNLESS OTHERWISE SPECIFIED)
 1. DIMENSIONS IN INCHES.
 2. REMOVE ALL SHARP EDGES, R.02 MIN.
 3. ALL MACHINING FLUIDS SHALL BE WATER SOLUBLE AND FREE OF SULFUR, CHLORINE AND SILICONE, SUCH AS CINCINNATI MILACRON'S CIMTECH 410 (STAINLESS STEEL).

SolidWorks Educational License
Instructional Use Only

8

7

6

5

4

3

2

1

FILE NAME/LOCATION: