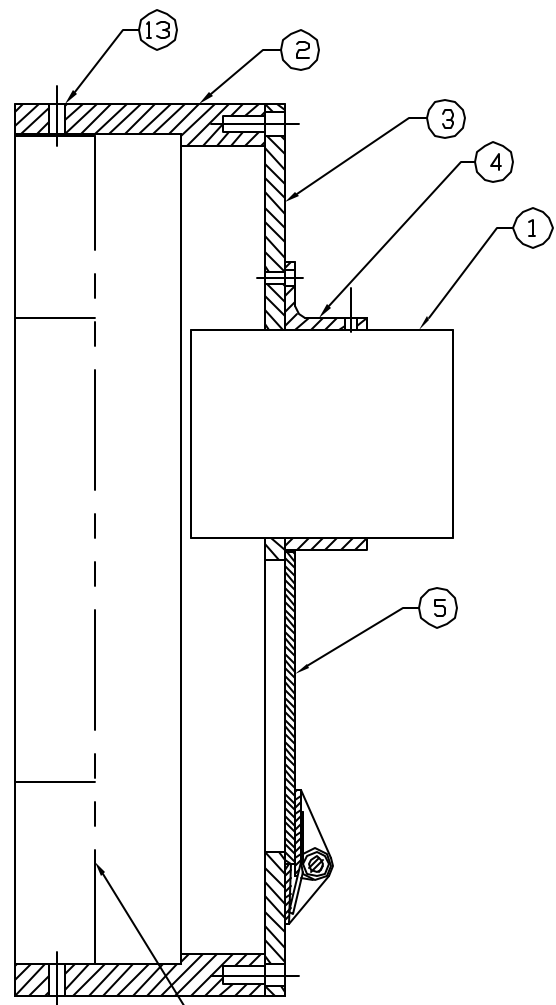
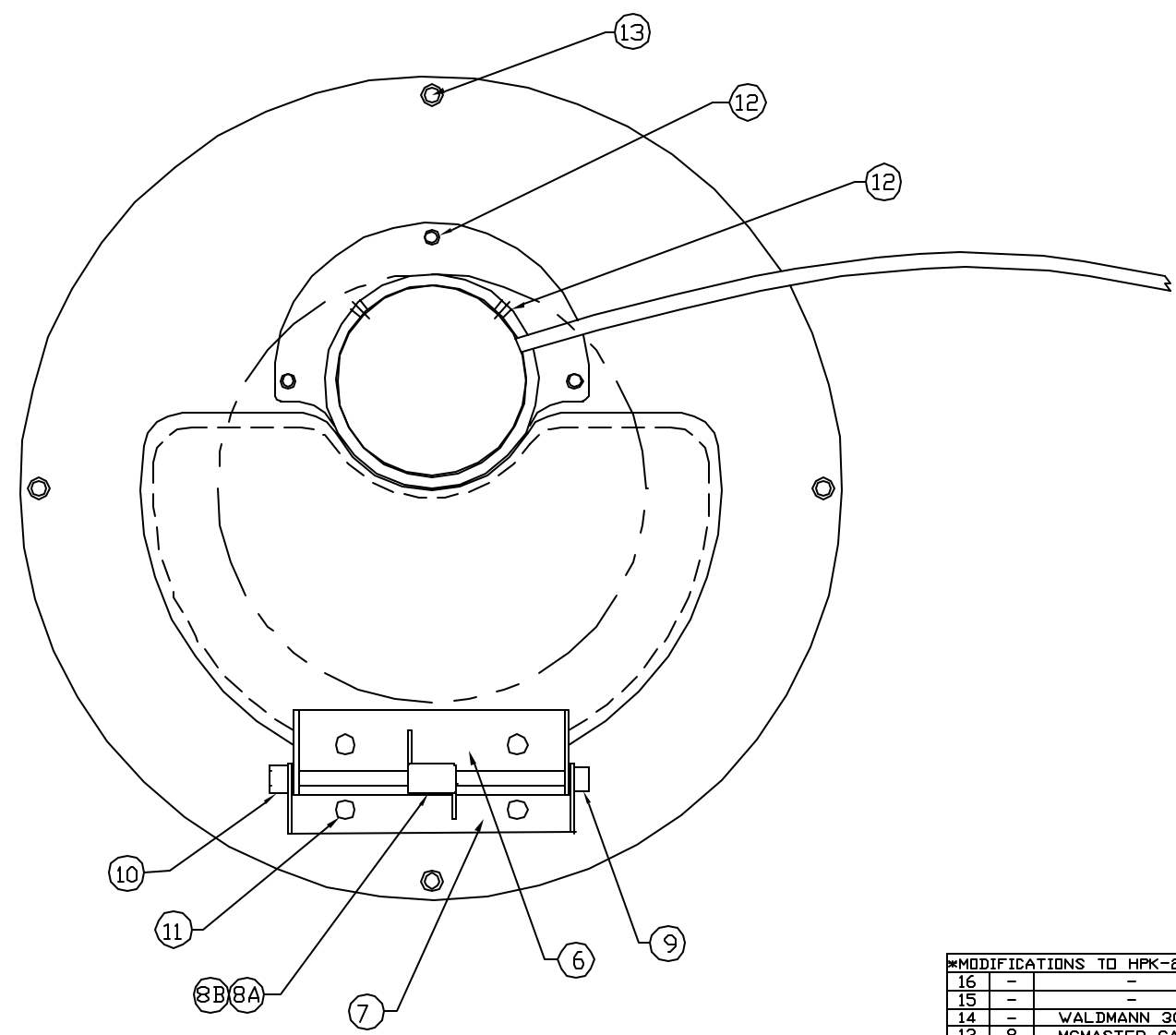


NOTES: (UNLESS OTHERWISE SPECIFIED)

- 1. X
- 2. X
- 3. X
- 4. X



10" OD VIEWPORT (REF.)



REF	QTY	PART or DRWG No.	DESCRIPTION	MATERIAL
*MODIFICATIONS TO HFK-20 LIGHT: DELETE BASE AND KNUCKLE, DELETE SHROUD, EXTEND CORD JACKET FULLY				
16	-	-	-	-
15	-	-	-	-
14	-	WALDMANN 300-591-020	LAMP, HALOGEN, AR48, 20W-24V, PKG OF 5	-
13	8	MCMaster-CARR 91251A539	SHCS, 1/4-20 X 5/8", BLACK OXIDE	ALLOY STEEL
12	5	MCMaster-CARR 91251A340	SHCS, 10-32 X 3/8", BLACK OXIDE	ALLOY STEEL
11	4	MCMaster-CARR 91255A261	SHCS, BUTN HEAD, 10-32 X 1/4", BLK OXIDE	ALLOY STEEL
10	1	MCMaster-CARR 91831A411	HEX NYLON-INSERT LOCKNUT, 10-32	18-8 STAINLESS
9	1	MCMaster-CARR 91251A364	SHCS, 10-32 X 4", BLACK OXIDE	ALLOY STEEL
8B	1	SPEC T045-270-234L	TORSION SPRING (ASSOCIATED SPRING)	STAINLESS STEEL
8A	1	SPEC T040-270-218L	TORSION SPRING (ASSOCIATED SPRING)	STAINLESS STEEL
7	1	D020175-01-2	OUTER HINGE	5052 ALUMINUM
6	1	D020175-01-1	INNER HINGE	5052 ALUMINUM
5	1	D020101-01	WINDOW COVER	6061-T6 ALUMINUM
4	1	D020099-01	MOUNTING COLLAR	6061-T6 ALUMINUM
3	1	D020100-02	TOP PLATE	6061-T6 ALUMINUM
2	1	D020102-01	FLANGE RING	6061-T6 ALUMINUM
1	1	WALDMANN HFK-20 (*MODIFIED)	SMALL HALOGEN LIGHT, 20W-24V	6061-T6 ALUMINUM
PARTS and MATERIAL LIST				

UNLESS OTHERWISE SPECIFIED DIMENSIONS ARE IN INCHES		TOLERANCES:		THREE PLACE DECIMAL ± 0.005		FINISHED SURFACE RMS: 63		BREAK CORNERS AND EDGES		REMOVE ALL BURRS	
XXX	XXX	FRACTIONAL ± 1/32		FRACTIONAL ± 1/32		FRACTIONAL ± 1/32		FRACTIONAL ± 1/32		FRACTIONAL ± 1/32	
		ANGULAR ± 1 DEG		ANGULAR ± 1 DEG		ANGULAR ± 1 DEG		ANGULAR ± 1 DEG		ANGULAR ± 1 DEG	
		ANGULAR MAX ± BEND ±		ANGULAR MAX ± BEND ±		ANGULAR MAX ± BEND ±		ANGULAR MAX ± BEND ±		ANGULAR MAX ± BEND ±	
		TWO PLACE DECIMAL ± 0.01		TWO PLACE DECIMAL ± 0.01		TWO PLACE DECIMAL ± 0.01		TWO PLACE DECIMAL ± 0.01		TWO PLACE DECIMAL ± 0.01	
		HEAT TREAT:		HEAT TREAT:		HEAT TREAT:		HEAT TREAT:		HEAT TREAT:	
		USED ON: XXX		NEXT ASS'Y: XXX		USED ON: XXX		NEXT ASS'Y: XXX		USED ON: XXX	
DVG. NO.		DESCRIPTION		ISSUE DESCRIPTION		ISSUE DESCRIPTION		ISSUE DESCRIPTION		ISSUE DESCRIPTION	
REFERENCE DRAWINGS		USED ON: XXX		NEXT ASS'Y: XXX		ISSUE DESCRIPTION		ISSUE DESCRIPTION		ISSUE DESCRIPTION	

CALIFORNIA INSTITUTE OF TECHNOLOGY  
 MASSACHUSETTS INSTITUTE OF TECHNOLOGY  
**INLINE ILLUMINATOR**  
 40 M  
 CAD FILE: ILLUMINATOR\_ASSY SIZE/DWG. NO.: D020098-02  
 SCALE: NTS SHEET: 1 OF 1

REV	DESCRIPTION	ICN NUMBER	APPR'D	CHECK	DRWN	DATE
01	ENLARGED WINDOW, ADDED HINGE	-	-	-	JONES	12/16/02
00	PRE-RELEASE	-	-	-	SMITH	3/5/02