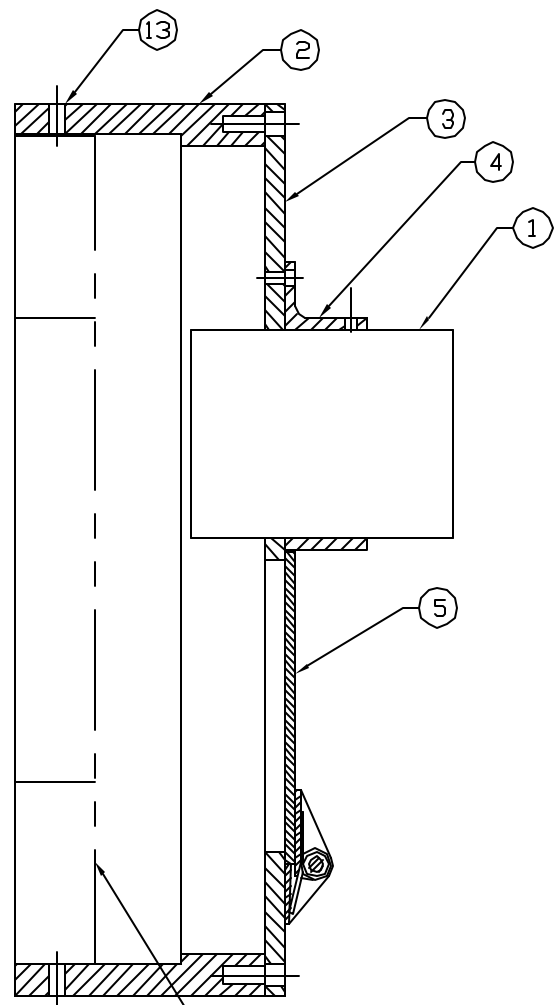
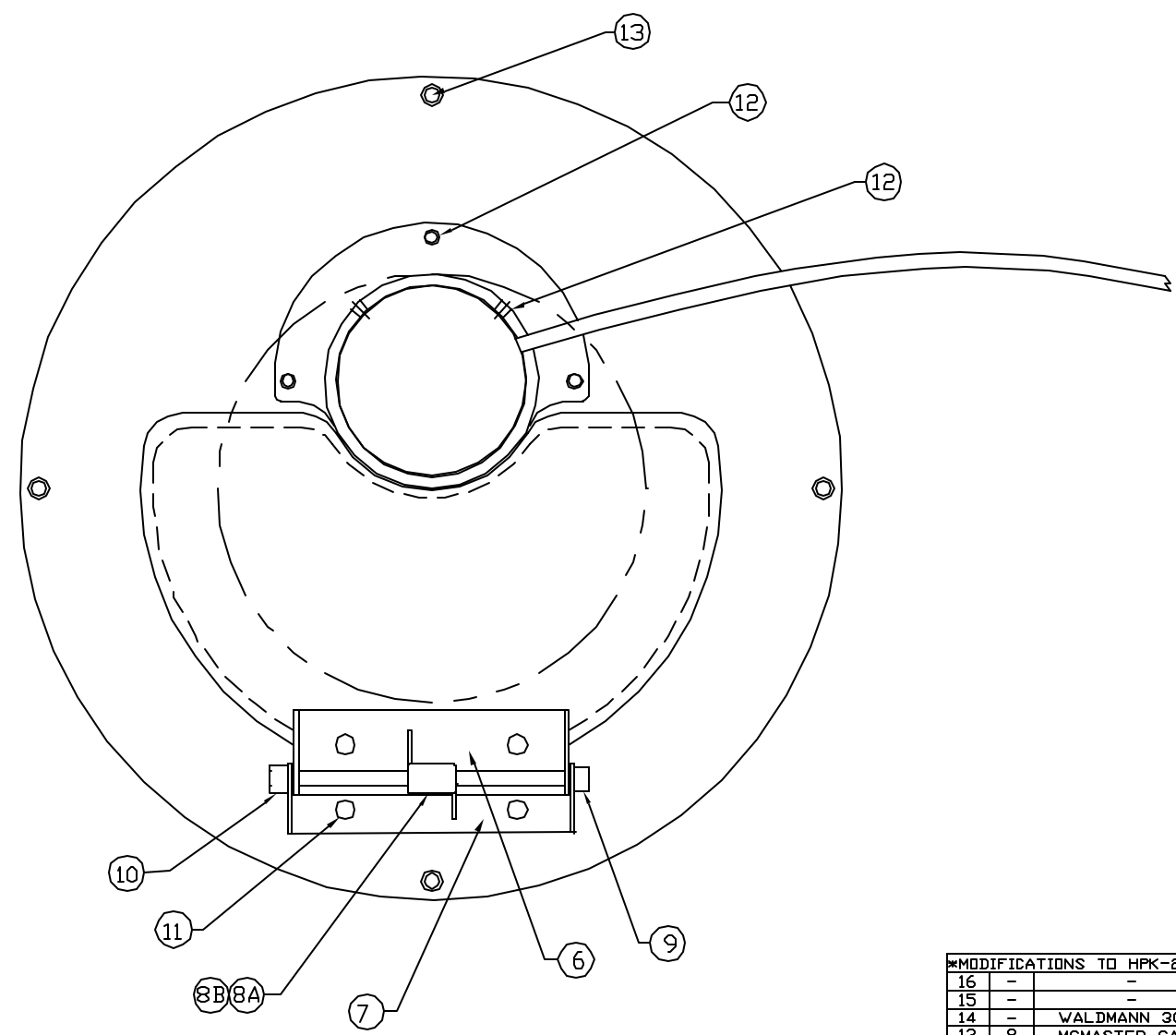


NOTES: (UNLESS OTHERWISE SPECIFIED)

- ① X
- ② X
- ③ X
- ④ X



10" OD VIEWPORT (REF.)



REF	QTY	PART or DRWG No.	DESCRIPTION	MATERIAL
*MODIFICATIONS TO HFK-20 LIGHT: DELETE BASE AND KNUCKLE, DELETE SHROUD, EXTEND CORD JACKET FULLY				
16	-	-	-	-
15	-	-	-	-
14	-	WALDMANN 300-591-020	LAMP, HALOGEN, AR48, 20W-24V, PKG OF 5	-
13	8	MCMaster-CARR 91251A539	SHCS, 1/4-20 X 5/8", BLACK OXIDE	ALLOY STEEL
12	5	MCMaster-CARR 91251A340	SHCS, 10-32 X 3/8", BLACK OXIDE	ALLOY STEEL
11	4	MCMaster-CARR 91255A261	SHCS, BUTN HEAD, 10-32 X 1/4", BLK OXIDE	ALLOY STEEL
10	1	MCMaster-CARR 91831A411	HEX NYLON-INSERT LOCKNUT, 10-32	18-8 STAINLESS
9	1	MCMaster-CARR 91251A364	SHCS, 10-32 X 4", BLACK OXIDE	ALLOY STEEL
8B	1	SPEC T045-270-234L	TORSION SPRING (ASSOCIATED SPRING)	STAINLESS STEEL
8A	1	SPEC T040-270-218L	TORSION SPRING (ASSOCIATED SPRING)	STAINLESS STEEL
7	1	D020175-00-2	OUTER HINGE	5052 ALUMINUM
6	1	D020175-00-1	INNER HINGE	5052 ALUMINUM
5	1	D020101-01	WINDOW COVER	6061-T6 ALUMINUM
4	1	D020099-01	MOUNTING COLLAR	6061-T6 ALUMINUM
3	1	D020100-01	TOP PLATE	6061-T6 ALUMINUM
2	1	D020102-01	FLANGE RING	6061-T6 ALUMINUM
1	1	WALDMANN HFK-20 (*MODIFIED)	SMALL HALOGEN LIGHT, 20W-24V	6061-T6 ALUMINUM
PARTS and MATERIAL LIST				

UNLESS OTHERWISE SPECIFIED DIMENSIONS ARE IN INCHES		TOLERANCES: FRACTIONAL ± 1/32 ANGULAR ± 1 DEG ANGULAR MATCH ± BEND ± TWO PLACE DECIMAL ± 0.01		THREE PLACE DECIMAL ± 0.005 FINISHED SURFACE RMS: 63 BREAK CORNERS AND EDGES REMOVE ALL BURRS		HEAT TREAT:		01 ENLARGED WINDOW, ADDED HINGE		DO PRE-RELEASE		REV DESCRIPTION		ICN NUMBER		APPR'D CHECK DRWN DATE		SCALE NTS		SHEET 1 OF 1	
XXX	XXX	HEAT TREAT:	01	DO	REV	ICN NUMBER	APPR'D	CHECK	DRWN	DATE	SCALE	SHEET	D020098-01		1 OF 1						
REFERENCE DRAWINGS		USED ON: XXX		NEXT ASS'Y: XXX		ISSUE DESCRIPTION															

LIGO CALIFORNIA INSTITUTE OF TECHNOLOGY MASSACHUSETTS INSTITUTE OF TECHNOLOGY

INLINE ILLUMINATOR 40 M

CAD FILE ILLUMINATOR_ASSY SIZE DWG. NO. D020098-01