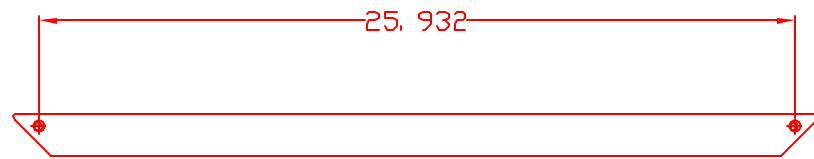
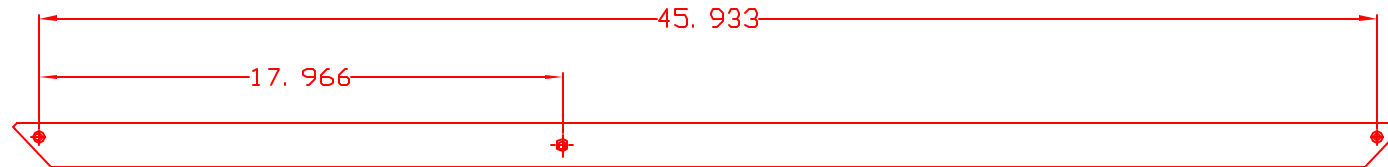


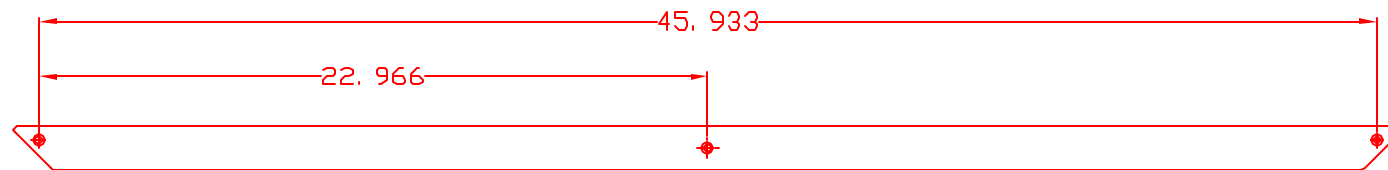
-1 24A RAIL MAT'L: 6061-T6 ALUMINUM; 1 REQ'D.



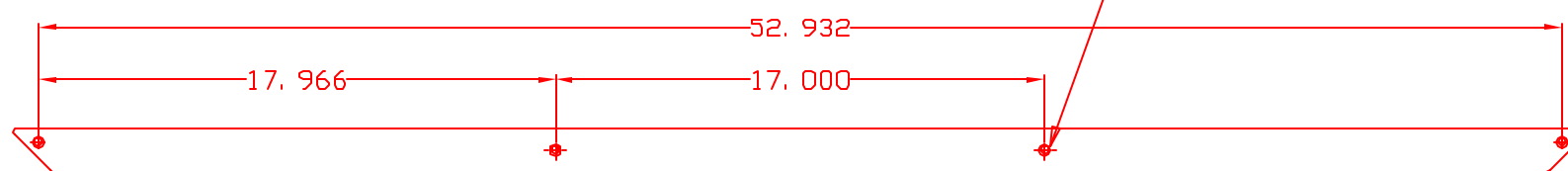
-2 28 RAIL MAT'L: 6061-T6 ALUMINUM; 2 REQ'D.



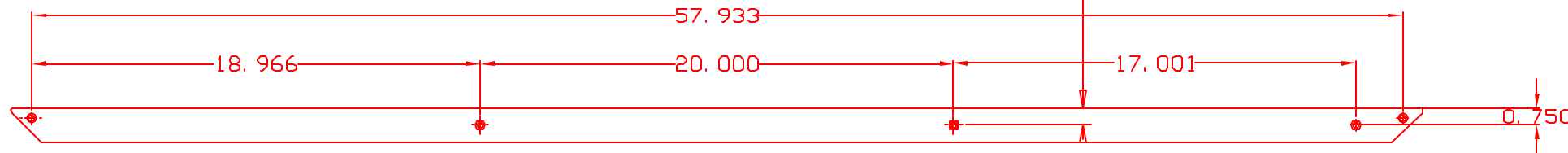
-3 48A RAIL MAT'L: 6061-T6 ALUMINUM; 2 REQ'D.



-4 48B RAIL MAT'L: 6061-T6 ALUMINUM; 1 REQ'D.



-5 55 RAIL MAT'L: 6061-T6 ALUMINUM; 2 REQ'D.



-6 60A RAIL MAT'L: 6061-T6 ALUMINUM; 1 REQ'D.

SEE D020082, FRAME RAILS #1,
FOR DETAILS OF RAIL ENDS

.G DRILL, 0.400 DIA C' BORE X 0.30 DEEP; TYP FOR ALL HOLES NOT AT ENDS

.750 TYP FOR ALL HOLES NOT AT ENDS

NOTES:

1. REMOVE ALL SHARP EDGES.
2. ETCH FOR MATTE FINISH.
3. ANODIZE DYE BLACK.
4. TAKE CARE TO PRESERVE STRAIGHTNESS DURING FABRICATION AND SHIPPING.

ALL DIMENSIONS ARE IN INCHES

TOLERANCES: X, XXX: +/- 0.005"
 X, XX: +/- 0.03"
 X, X: +/- 0.1"

D020083-01-R

FRAME RAILS #2, TABLE COVER
 40M LAB LIGO PROJECT
 L JONES 6/19/02