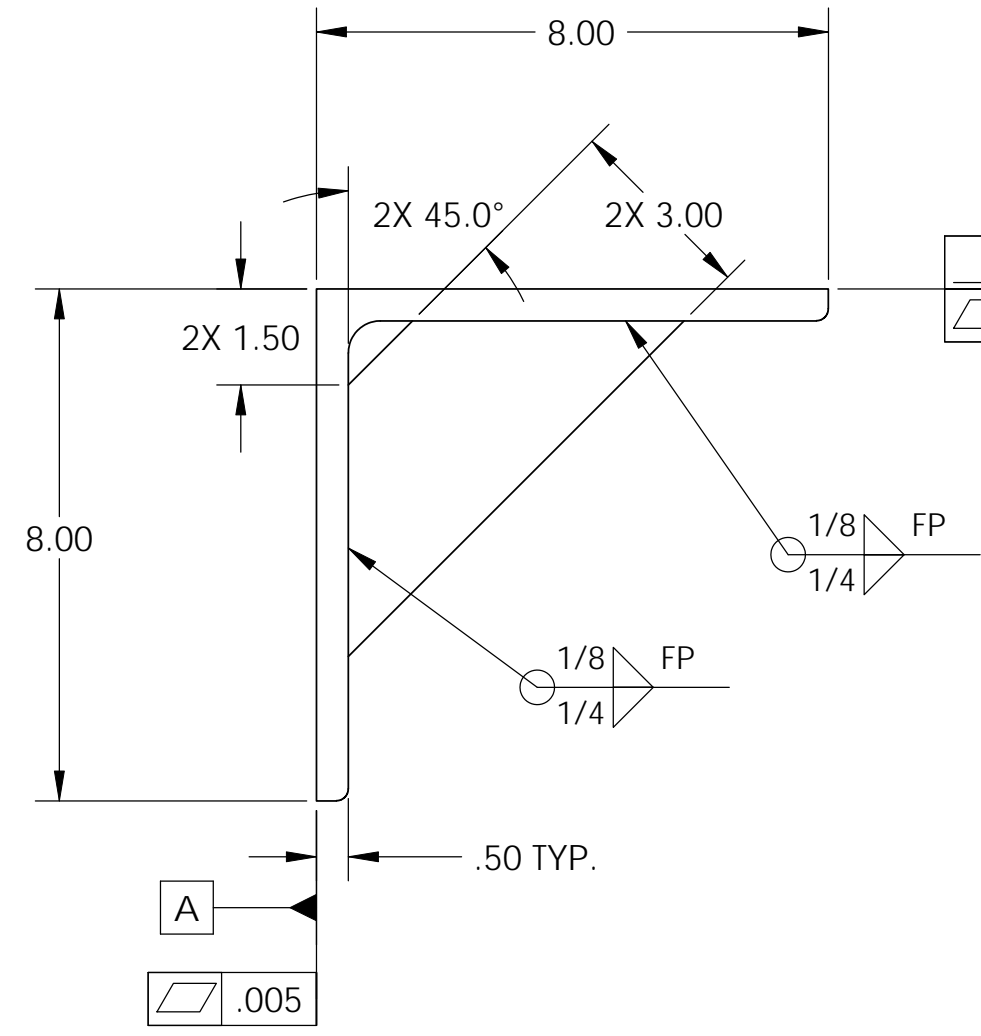


D020016_HEPI_actuator_bracket, PART PDM REV: X-008, DRAWING PDM REV: X-002

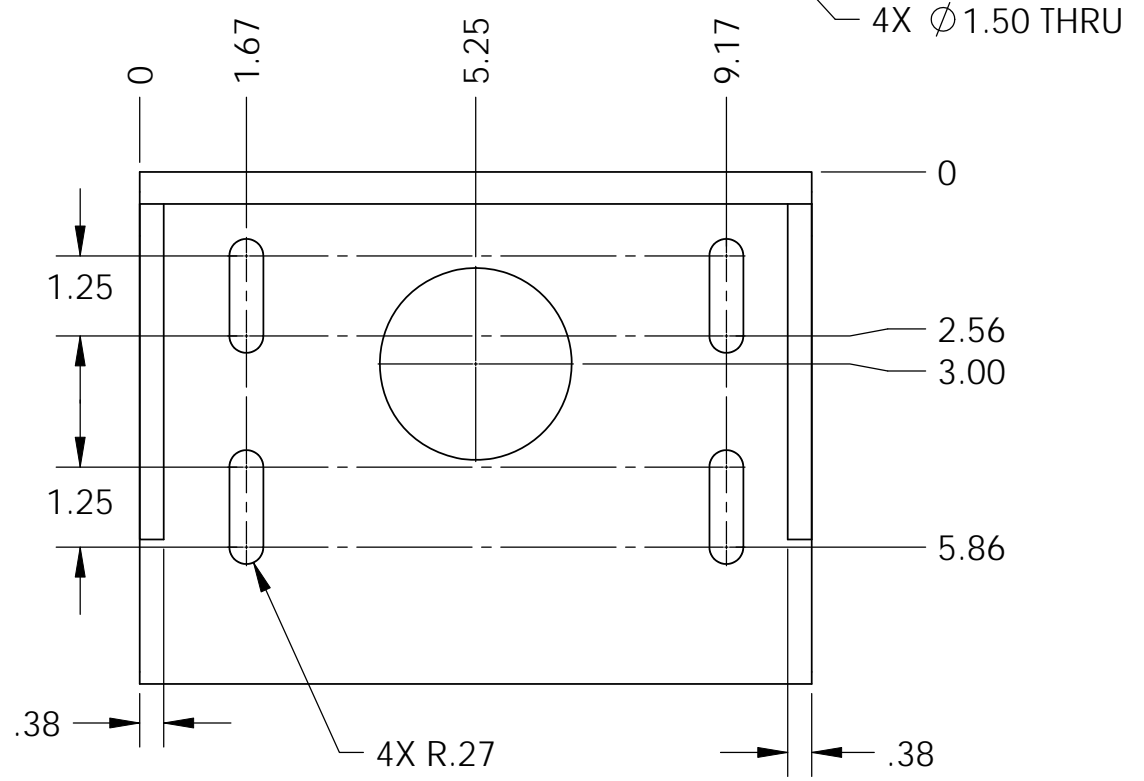
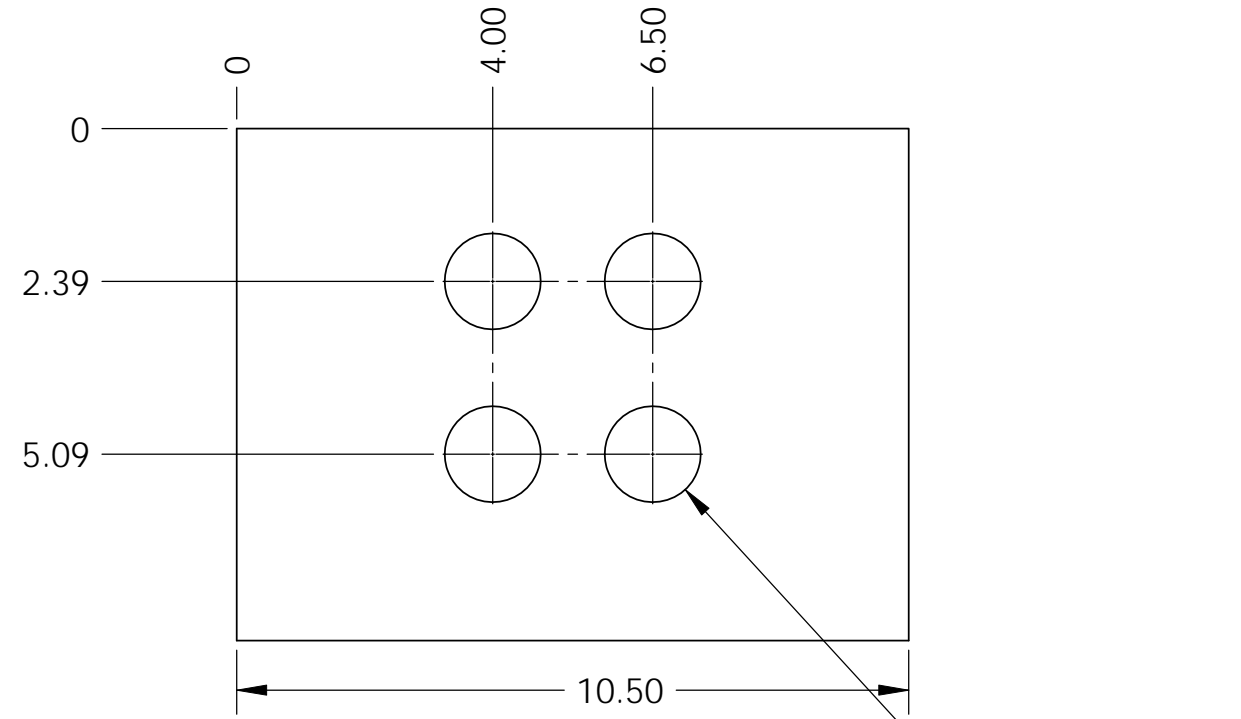
REV.	DATE	DCN #	DRAWING TREE #
v1	21 Feb. 2011	E1100119	E1100016

NOTES CONTINUED:

- 4. ALL MACHINING FLUIDS MUST BE FULLY SYNTHETIC, FULLY WATER SOLUBLE AND FREE OF SULFUR, SILICONE AND CHLORINE.
- 5. SCRIBE, ENGRAVE, OR MECHANICALLY STAMP (NO INKS OR DYES) DRAWING PART NUMBER, REVISION (AND VARIANT OR "TYPE" IF APPLICABLE ON NOTED SURFACE OF PART FOLLOWED ON THE NEXT LINE WITH A THREE DIGIT SERIAL NUMBER. SERIAL NUMBERS START AT 001 FOR THE FIRST ARTICLE AND PROCEED CONSECUTIVELY. USE MINIMUM 0.12 HIGH CHARACTERS, UNLESS THE SIZE OF THE PART DICTATES SMALLER CHARACTERS. A VIBRATORY TOOL MAY BE USED. EXAMPLE DXXXXXXX-VY, TYPE-XX, S/N XXX.
- 6. APPROXIMATE WEIGHT = 23.5 LB.
- 7. ALL PARTS SHALL BE MANUFACTURED IN ACCORDANCE WITH LIGO SPECIFICATION E0900364.
- 8. PAINT: ALL VISIBLE SURFACES (exclude fastening hardware) MEDIUM BLUE SHERWIN WILLIAMS (POLANE (R) T-PLUS POLYURETHANE ENAMEL) #SW-F63TX-L-2822-5864 PRIME WITH SHERWIN WILLIAMS INDUSTRIAL WASH PRIMER P60G2
- 9. "OXI SOLV RUST INHIBITOR" TO BE APPLIED PER MFG. INSTRUCTIONS TO ALL UNPAINTED SURFACES. BOTH TAPPED AND THRU HOLES WILL BE PLUGGED DURING APPLICATION.



	.010	A
	.005	



NOTES AND TOLERANCES: (UNLESS OTHERWISE SPECIFIED)				LIGO CALIFORNIA INSTITUTE OF TECHNOLOGY MASSACHUSETTS INSTITUTE OF TECHNOLOGY		PART NAME	
DIMENSIONS ARE IN		1. INTERPRET DRAWING PER ASME Y14.5-1994.		ADVANCED LIGO		Horizontal Angle Mount Hydraulic Isolator	
TOLERANCES:		2. REMOVE ALL SHARP EDGES, .03 x 45°.		SUB-SYSTEM SEI		DESIGNER M.HAMMOND 17 Feb 2003	
.XX ±		3. DO NOT SCALE FROM DRAWING.		NEXT ASSY		DRAFTER M.HILLARD 21 Feb. 2011	
.XXX ±		MATERIAL ASTM A36 Steel		FINISH 63 μinch		CHECKER M.HAMMOND 17 Feb. 2003	
ANGULAR ± °						APPROVAL K.MASON 21 Feb. 2011	
						SIZE DWG. NO. B D020016	
						REVISION v1	
						SCALE: 1:3 PROJECTION: SHEET 1 OF 1	