

1

2

3

4

NOTES: (UNLESS OTHERWISE SPECIFIED)
1. DIMENSIONS IN INCHES.

REV	DATE	DRAWN BY	CHECKED	DCS	DCN/DESCRIPTION
A	9/7/01	J. ROMIE			E010162/INITIAL RELEASE
B	4/25/03	J. ROMIE			E030212/SWITCH BUSHING

A

A

B

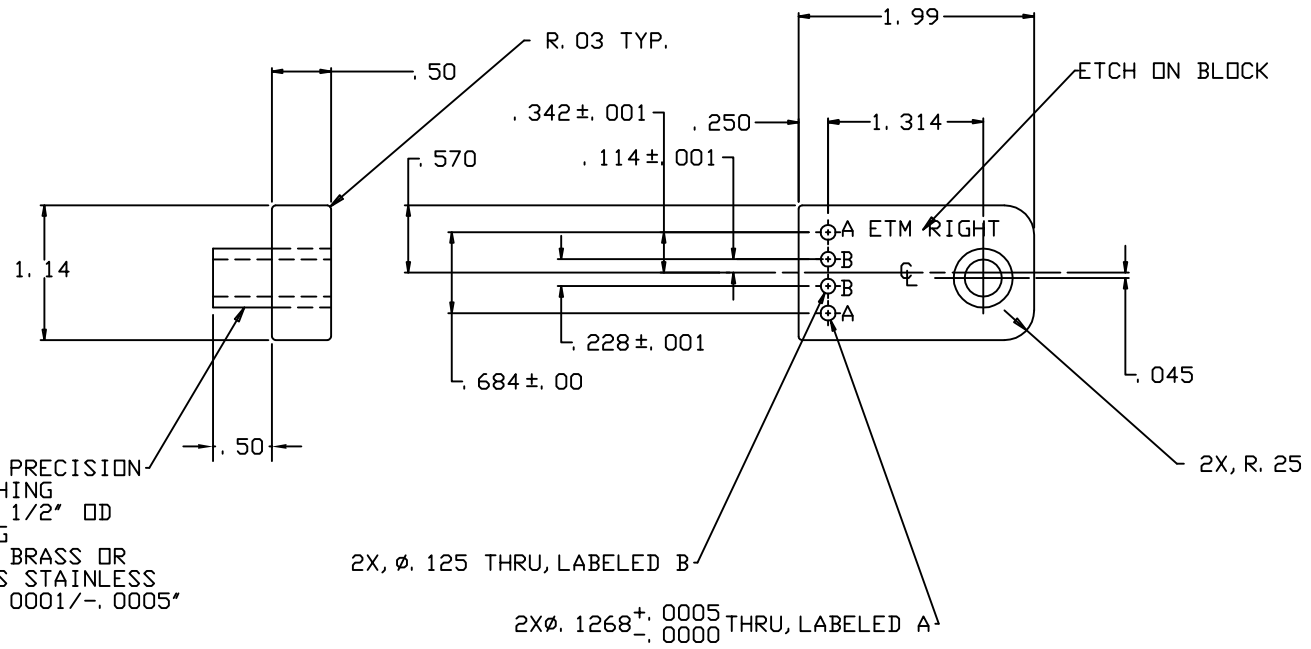
B

C

C

D

D



PRESS FIT PRECISION
 DRILL BUSHING
 5/16" ID, 1/2" OD
 1.00" LONG
 MATERIAL: BRASS OR
 300 SERIES STAINLESS
 ID TOL. +.0001/-0.0005"

2X, Ø. 125 THRU, LABELED B

2X Ø. 1268^{+0.0005}/_{-0.0000} THRU, LABELED A

QTY REQD	FSCH NO	PART OR IDENTIFYING NO	NOMENCLATURE OR DESCRIPTION	MATERIAL SPECIFICATION	ITER NO
PARTS LIST					
UNLESS OTHERWISE SPECIFIED DIMENSIONS ARE IN INCHES TOLERANCES ARE:			APPROVALS	DATE	CALIFORNIA INSTITUTE OF TECHNOLOGY MASSACHUSETTS INSTITUTE OF TECHNOLOGY
FRACTIONS DECIMALS			DRAWN J. ROMIE	9/01	
0, XX=±0.01			CHECKED		TITLE
0, XXX=±0.005					40m ETM RIGHT EAR
ANGLES=±0.5°					DWG NO.
DO NOT SCALE DRAWING					D010198-B
NEXT ASSEMBLY	D010182	MATERIAL	ALUM 6061-T6		SCALE
FILE LOCATION	/home/dcc/docs/D010198.pdf	FINISH	NONE		1/1
					SHEET 1 OF 1

1

2

3

4