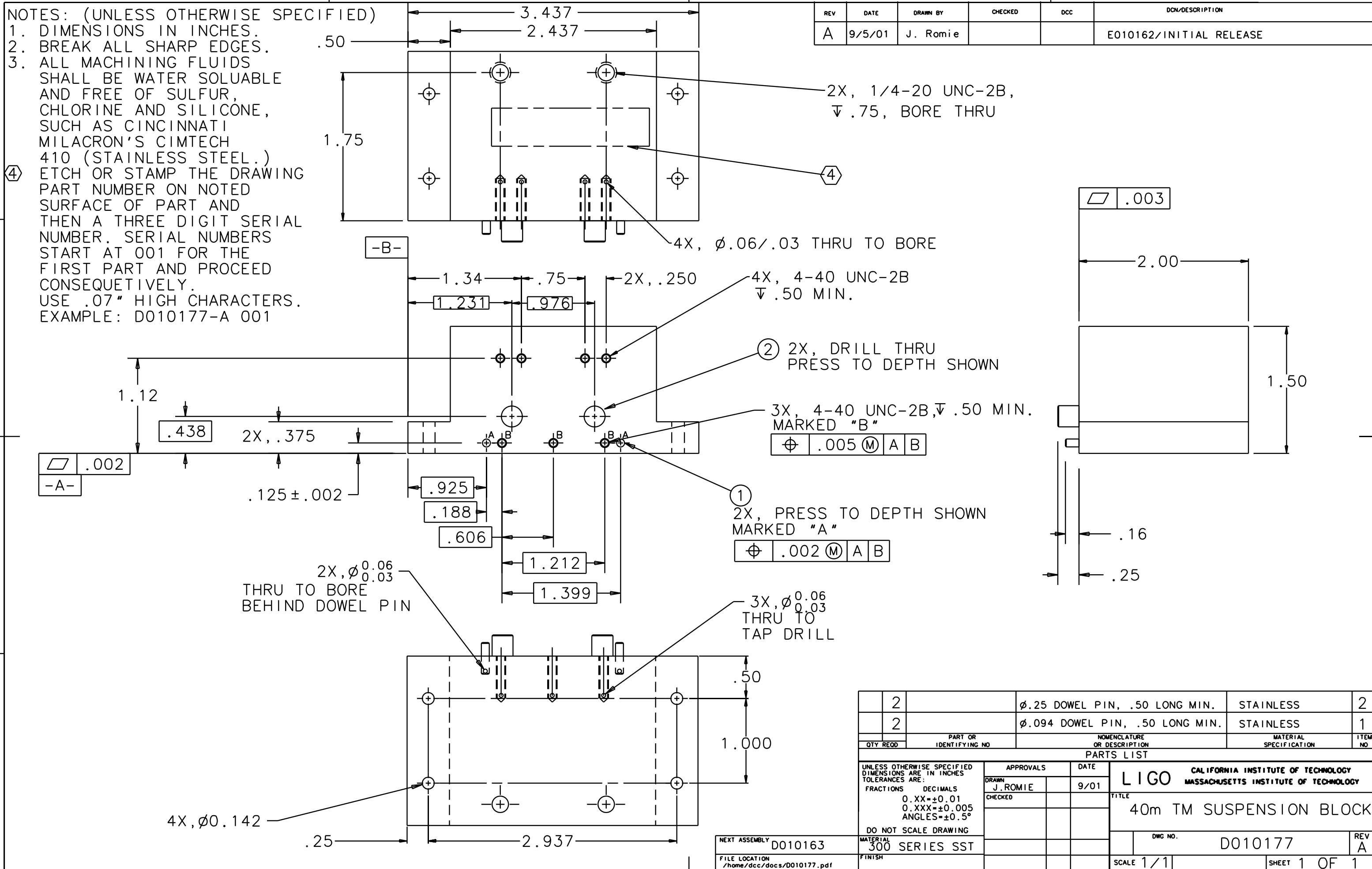


NOTES: (UNLESS OTHERWISE SPECIFIED)

1. DIMENSIONS IN INCHES.
 2. BREAK ALL SHARP EDGES.
 3. ALL MACHINING FLUIDS SHALL BE WATER SOLUABLE AND FREE OF SULFUR, CHLORINE AND SILICONE, SUCH AS CINCINNATI MILACRON'S CIMTECH 410 (STAINLESS STEEL.)
- ④ ETCH OR STAMP THE DRAWING PART NUMBER ON NOTED SURFACE OF PART AND THEN A THREE DIGIT SERIAL NUMBER. SERIAL NUMBERS START AT 001 FOR THE FIRST PART AND PROCEED CONSEQUETIVELY. USE .07" HIGH CHARACTERS. EXAMPLE: D010177-A 001

REV	DATE	DRAWN BY	CHECKED	DCC	DCN/DESCRIPTION
A	9/5/01	J. Romie			E010162/INITIAL RELEASE



QTY REQD	PART OR IDENTIFYING NO	NOMENCLATURE OR DESCRIPTION	MATERIAL SPECIFICATION	ITEM NO
2		φ.25 DOWEL PIN, .50 LONG MIN.	STAINLESS	2
2		φ.094 DOWEL PIN, .50 LONG MIN.	STAINLESS	1

PARTS LIST

UNLESS OTHERWISE SPECIFIED DIMENSIONS ARE IN INCHES TOLERANCES ARE:		APPROVALS		DATE	LIGO CALIFORNIA INSTITUTE OF TECHNOLOGY MASSACHUSETTS INSTITUTE OF TECHNOLOGY TITLE 40m TM SUSPENSION BLOCK
FRACTIONS	DECIMALS	DRAWN	J.ROMIE	9/01	
0.XX±0.01	0.XXX±0.005	CHECKED			
DO NOT SCALE DRAWING					DWG NO. D010177
NEXT ASSEMBLY D010163		MATERIAL 300 SERIES SST		FINISH	REV A
FILE LOCATION /home/dcc/docs/D010177.pdf					SCALE 1/1 SHEET 1 OF 1