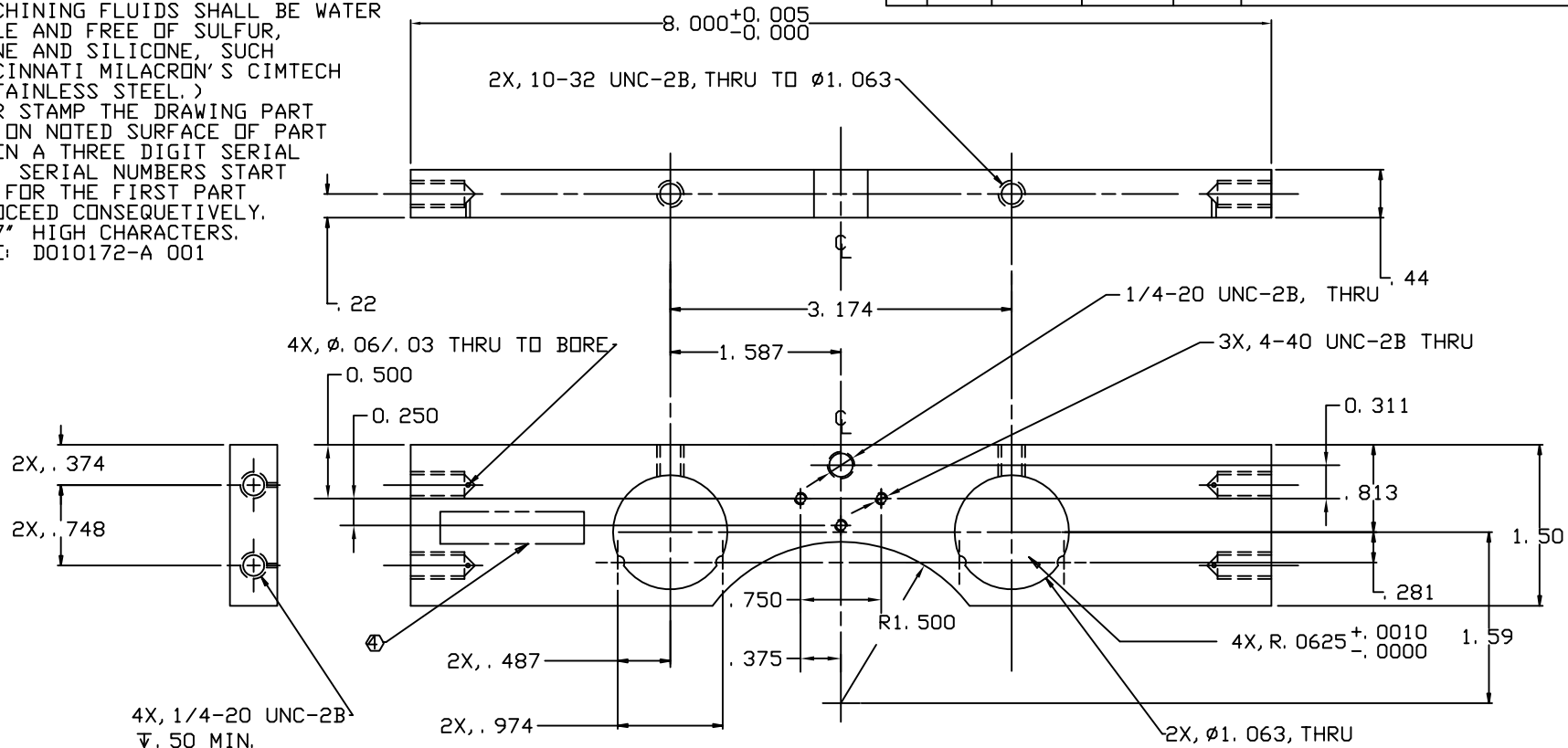


NOTES: (UNLESS OTHERWISE SPECIFIED)

1. DIMENSIONS IN INCHES.
2. BREAK ALL SHARP EDGES.
3. ALL MACHINING FLUIDS SHALL BE WATER SOLUBLE AND FREE OF SULFUR, CHLORINE AND SILICONE, SUCH AS CINCINNATI MILACRON'S CIMTECH 410 (STAINLESS STEEL.)
- ④ ETCH OR STAMP THE DRAWING PART NUMBER ON NOTED SURFACE OF PART AND THEN A THREE DIGIT SERIAL NUMBER. SERIAL NUMBERS START AT 001 FOR THE FIRST PART AND PROCEED CONSEQUATIVELY. USE .07" HIGH CHARACTERS. EXAMPLE: D010172-A 001

REV	DATE	DRAWN BY	CHECKED	DC	DCN/DESCRIPTION
A	9/4/01	J. Romie			E010162/INITIAL RELEASE
B	11/1/02	J. Romie			E020998/ADD HOLES



UNLESS OTHERWISE SPECIFIED DIMENSIONS ARE IN INCHES TOLERANCES ARE:		APPROVALS		DATE	LIGO CALIFORNIA INSTITUTE OF TECHNOLOGY MASSACHUSETTS INSTITUTE OF TECHNOLOGY
FRACTIONS	DECIMALS	DESIGN	J. ROMIE	9/01	
0. XX=±0.01	0. XXX=±0.005	CHECKED			40m TM HEAD HOLDER, TOP
ANGLES=±0.5°					DWG NO. D010172
DO NOT SCALE DRAWING					REV B
NEXT ASSEMBLY D010163	PREVIOUS 300 SERIES SST				SCALE 1/1
FILE LOCATION /home/dcc/docs/D010172.pdf	FIRSR				SHEET 1 OF 1