

1

2

3

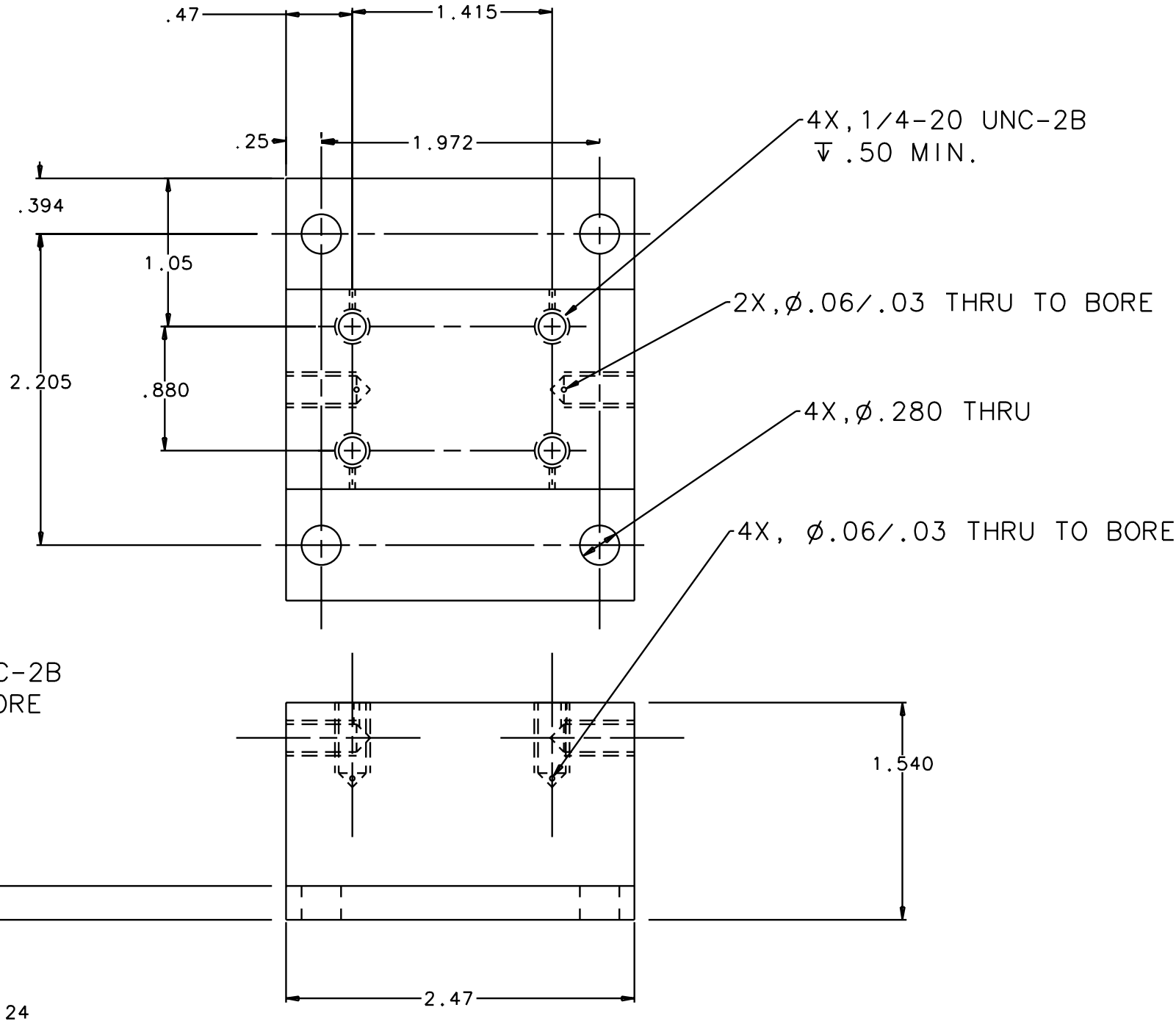
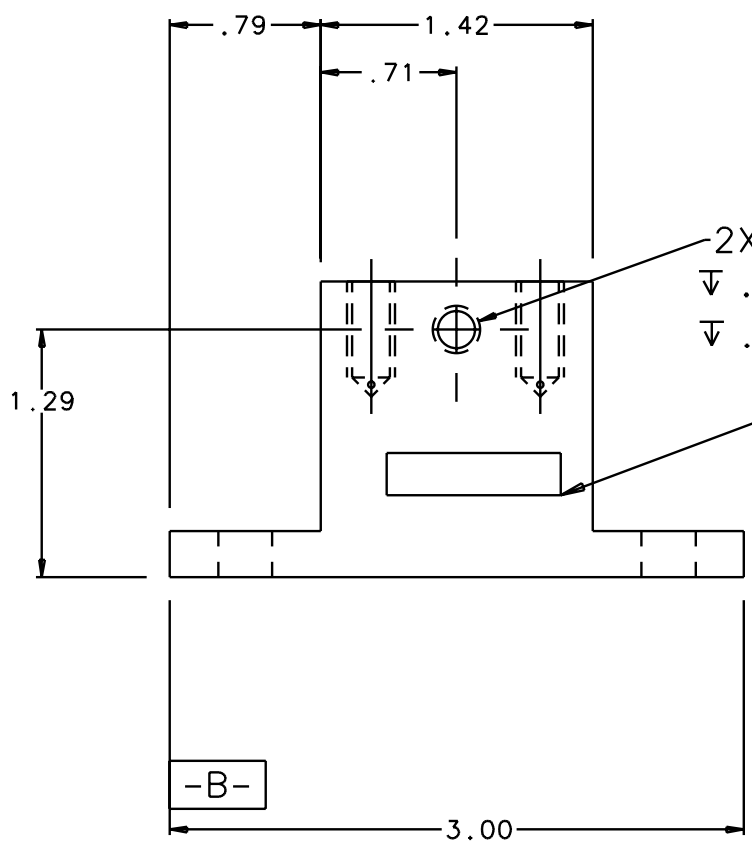
4

REV	DATE	DRAWN BY	CHECKED	DCC	DCN/DESCRIPTION
A	8/31/01	J. Romie			E010162/INITIAL RELEASE

NOTES: (UNLESS OTHERWISE SPECIFIED)

- DIMENSIONS IN INCHES.
- BREAK ALL SHARP EDGES.
- ALL MACHINING FLUIDS SHALL BE WATER SOLUABLE AND FREE OF SULFUR, CHLORINE AND SILICONE, SUCH AS CINCINNATI MILACRON'S CIMTECH 410 (STAINLESS STEEL.)

④ ETCH OR STAMP THE DRAWING PART NUMBER ON NOTED SURFACE OF PART AND THEN A THREE DIGIT SERIAL NUMBER. SERIAL NUMBERS START AT 001 FOR THE FIRST PART AND PROCEED CONSEQUETIVELY. USE .07" HIGH CHARACTERS. EXAMPLE: D010165-A 001



QTY REQD	FSCM NO	PART OR IDENTIFYING NO	NOMENCLATURE OR DESCRIPTION	MATERIAL SPECIFICATION	ITEM NO
PARTS LIST					
UNLESS OTHERWISE SPECIFIED DIMENSIONS ARE IN INCHES TOLERANCES ARE:			APPROVALS		
FRACTIONS DECIMALS			DATE		
0.XX=±0.01			J. ROMIE		
0.XXX=±0.005			8/01		
ANGLES=±0.5°			TITLE		
DO NOT SCALE DRAWING			LIGO CALIFORNIA INSTITUTE OF TECHNOLOGY MASSACHUSETTS INSTITUTE OF TECHNOLOGY		
NEXT ASSEMBLY			DWC NO.		
D010163			D010165		
MATERIAL			REV		
ALUM 6061-T6			A		
FINISH			SCALE		
/home/dcc/docs/D010165.pdf			1/1		
					SHEET 1 OF 1

1

2

3

4