

1

2

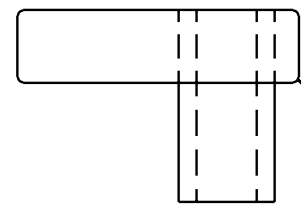
3

4

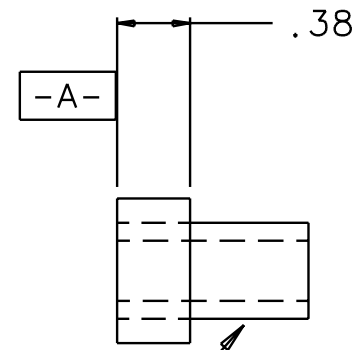
NOTES: (UNLESS OTHERWISE SPECIFIED)

- 1. DIMENSIONS IN INCHES.
- 2. REMOVE ALL SHARP EDGES.
- 3. ENGRAVE OR ETCH PART WITH DRAWING NUMBER.

REV	DATE	DRAWN BY	CHECKED	DCC	DCN/DESCRIPTION
A	8-15-01	J.Romie			E010154/INITIAL RELEASE

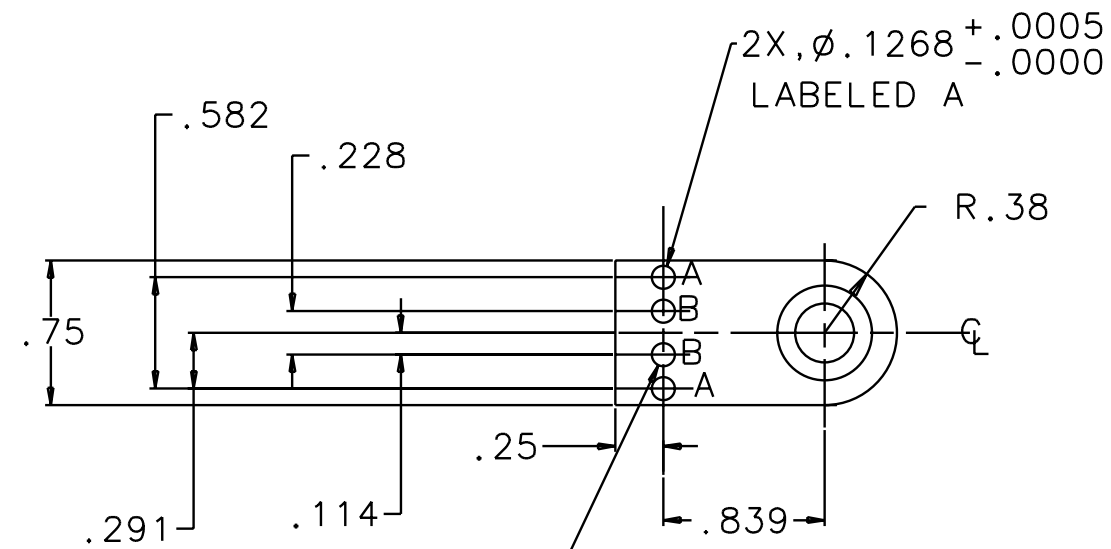


R.03, ALL AROUND



6X, PRESS FIT PRECISION
 DRILL BUSHING
 5/16" ID, 1/2" OD, 1.00" LONG
 MATERIAL: BRASS OR 300 SST
 ID TOL. = +.0001/- .0005"

\perp .001 A



QTY REQD	FSCM NO	PART OR IDENTIFYING NO	NOMENCLATURE OR DESCRIPTION	MATERIAL SPECIFICATION	ITEM NO
PARTS LIST					
UNLESS OTHERWISE SPECIFIED DIMENSIONS ARE IN INCHES TOLERANCES ARE:			APPROVALS	DATE	LIGO CALIFORNIA INSTITUTE OF TECHNOLOGY MASSACHUSETTS INSTITUTE OF TECHNOLOGY
FRACTIONS DECIMALS			DRAWN J. Romie	8/01	
0.XX=±0.01			CHECKED		TITLE RIGHT SIDE BLOCK FOR 40m SRM
0.XXX=±0.002					DWG NO. D010128-A-D
ANGLES=±0.5°					
DO NOT SCALE DRAWING					
NEXT ASSEMBLY	D010131	MATERIAL	ALUM 6061-T6		
FILE LOCATION	/home/dcc/docs/D010128.pdf	FINISH	NONE		
				SCALE 1/1	SHEET 1 OF 1

1

2

3

4