

**1** WOMEN 114 - MEN 113 SIM.  
1/4" - 1'-0"

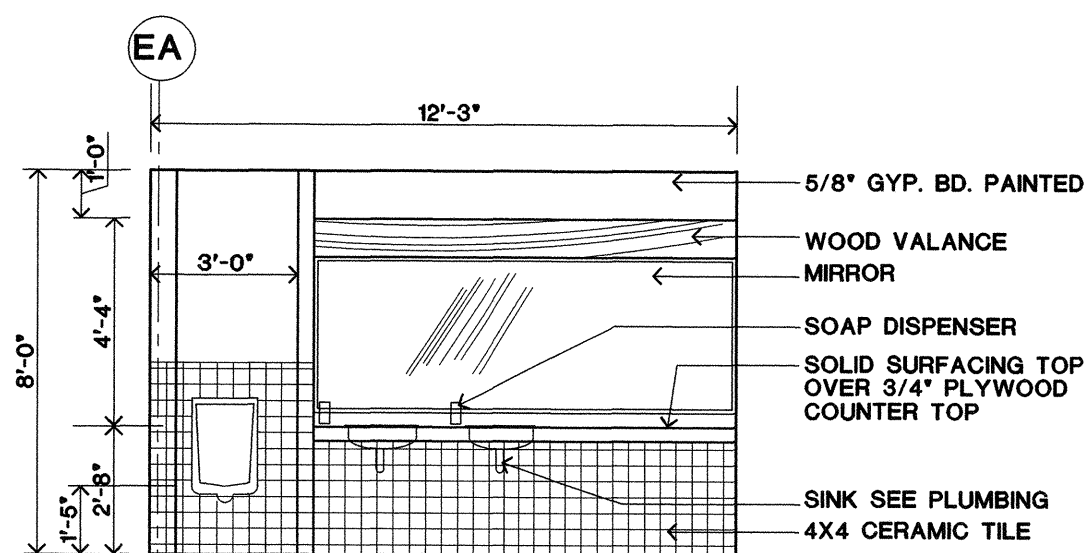
**2** WOMEN 114  
1/4" - 1'-0"

**3** MEN 113  
1/4" - 1'-0"

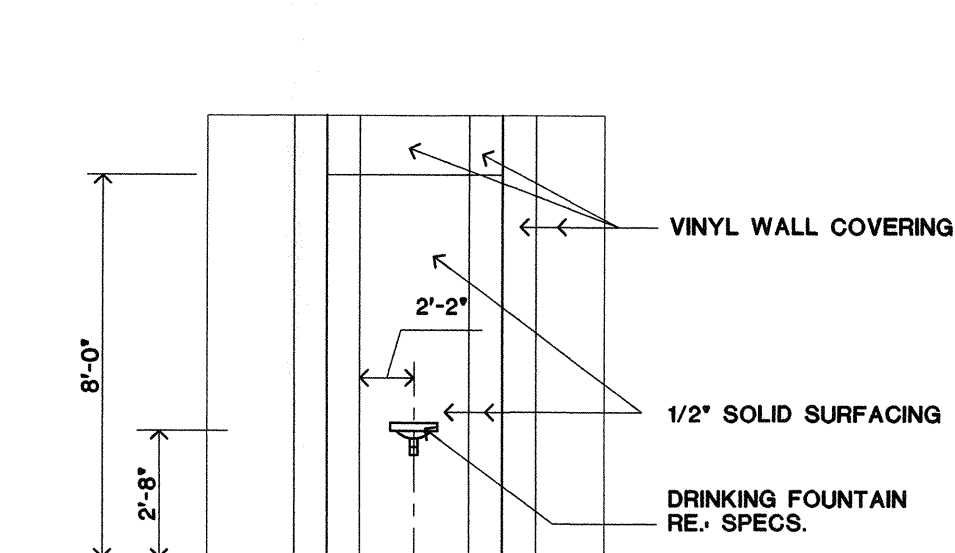
**4** TOILET 101 - TOILET 201  
1/4" - 1'-0"

**5** WOMEN 205 - MEN 206 SIM.  
1/4" - 1'-0"

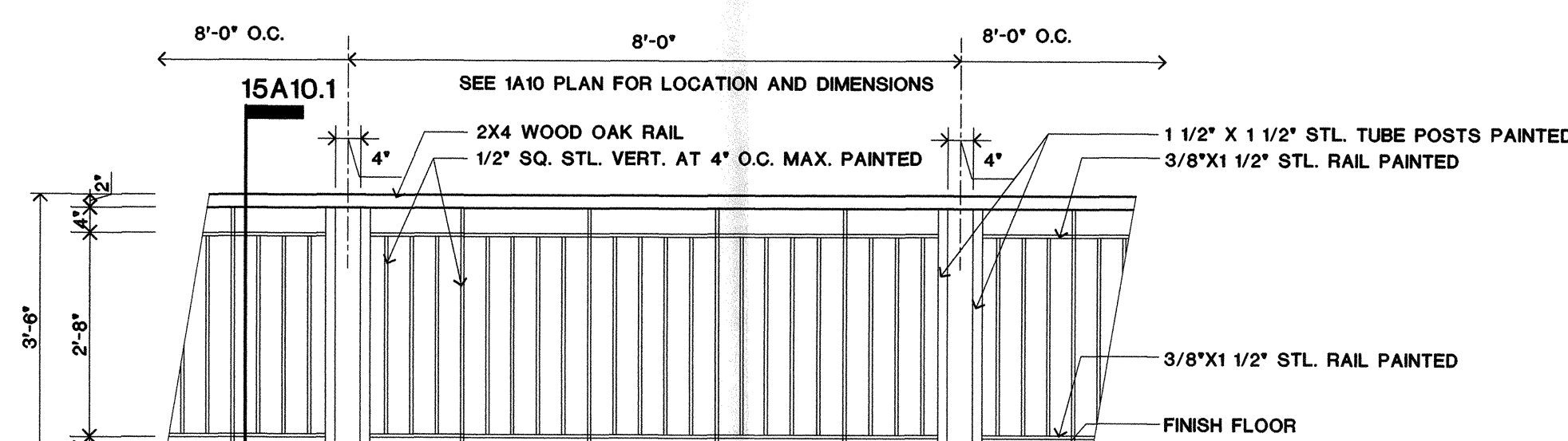
**6** WOMEN 205  
1/4" - 1'-0"



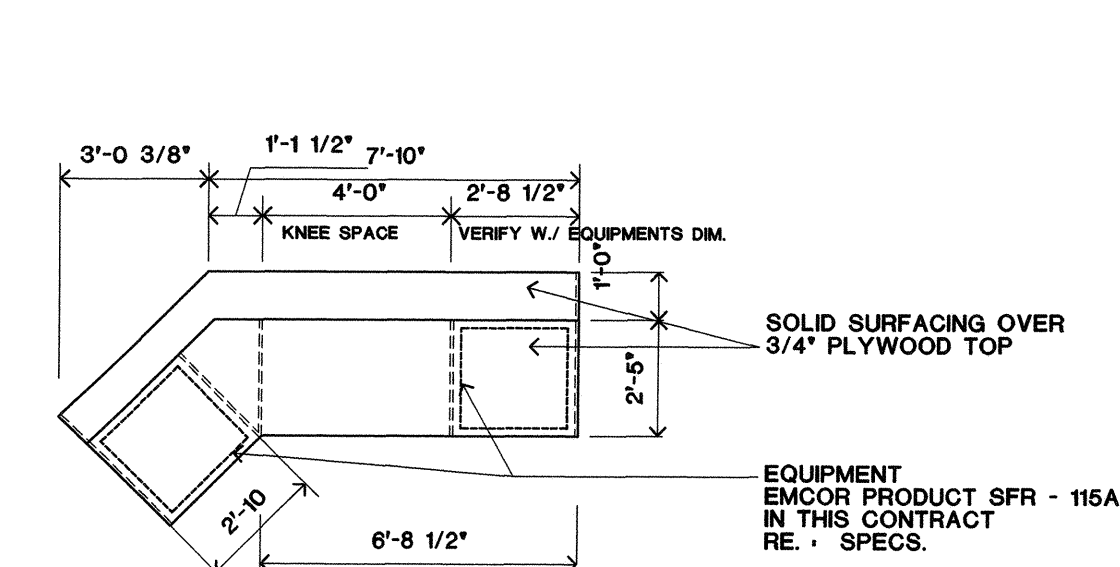
**7** MEN 206  
1/4" - 1'-0"



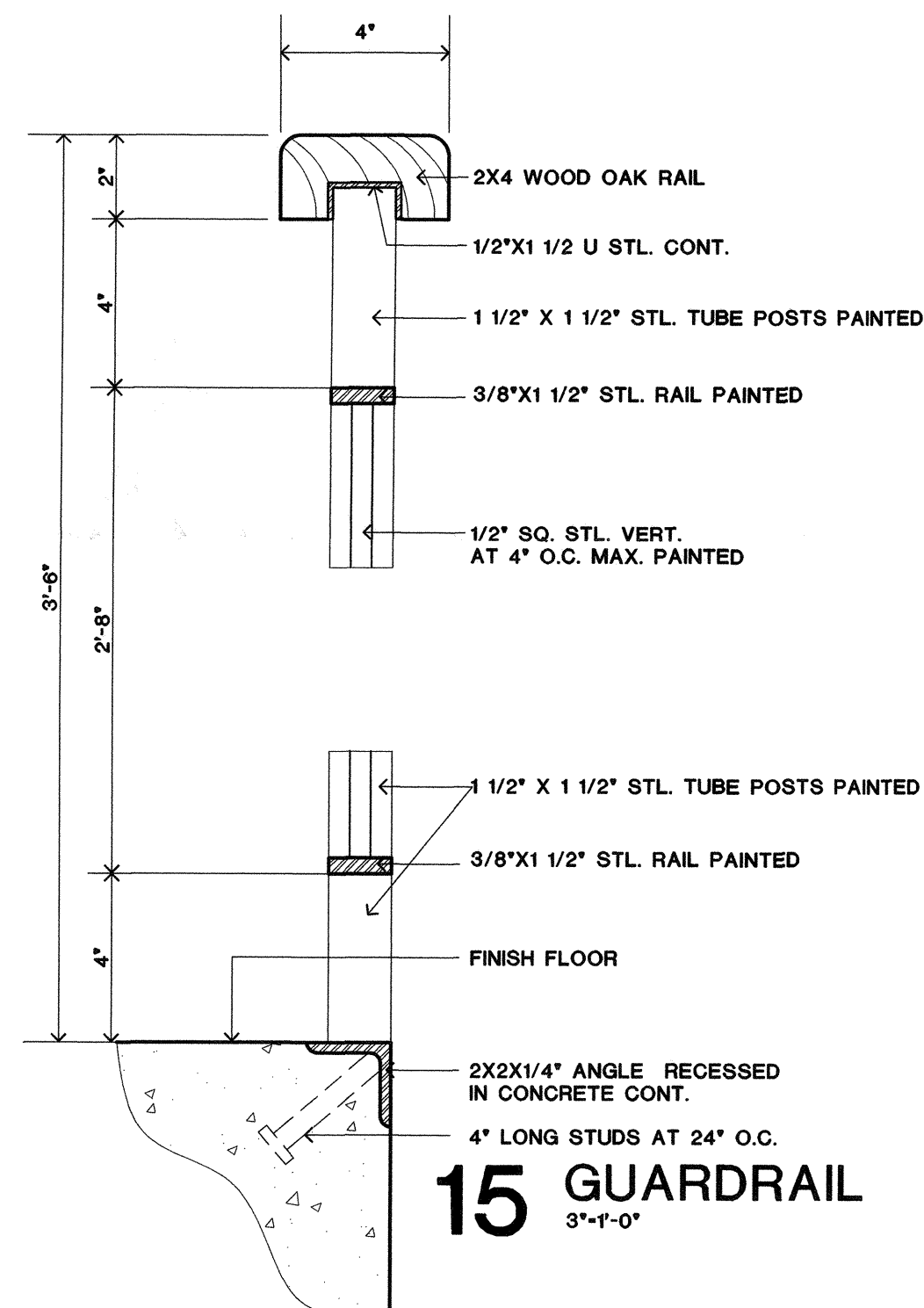
**8** DRINKG. FTN. AT LOBBY 111  
1/4" - 1'-0"



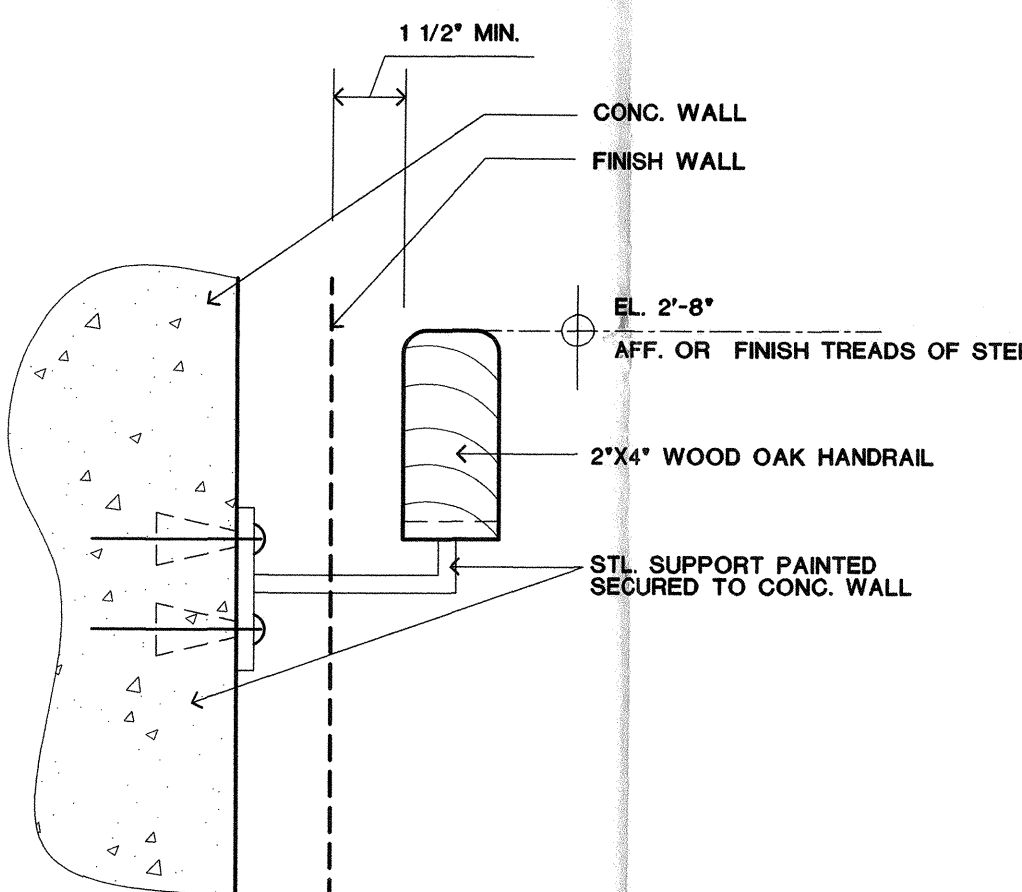
**14** GUARDRAIL AT MEETING RM.  
1/2" - 1'-0"



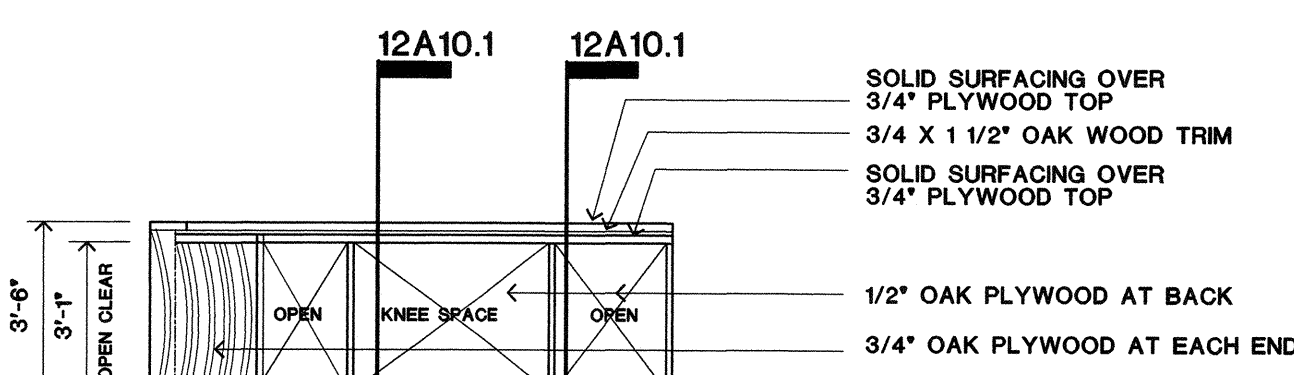
**10** PLAN - CONTROL DESK  
1/4" - 1'-0"



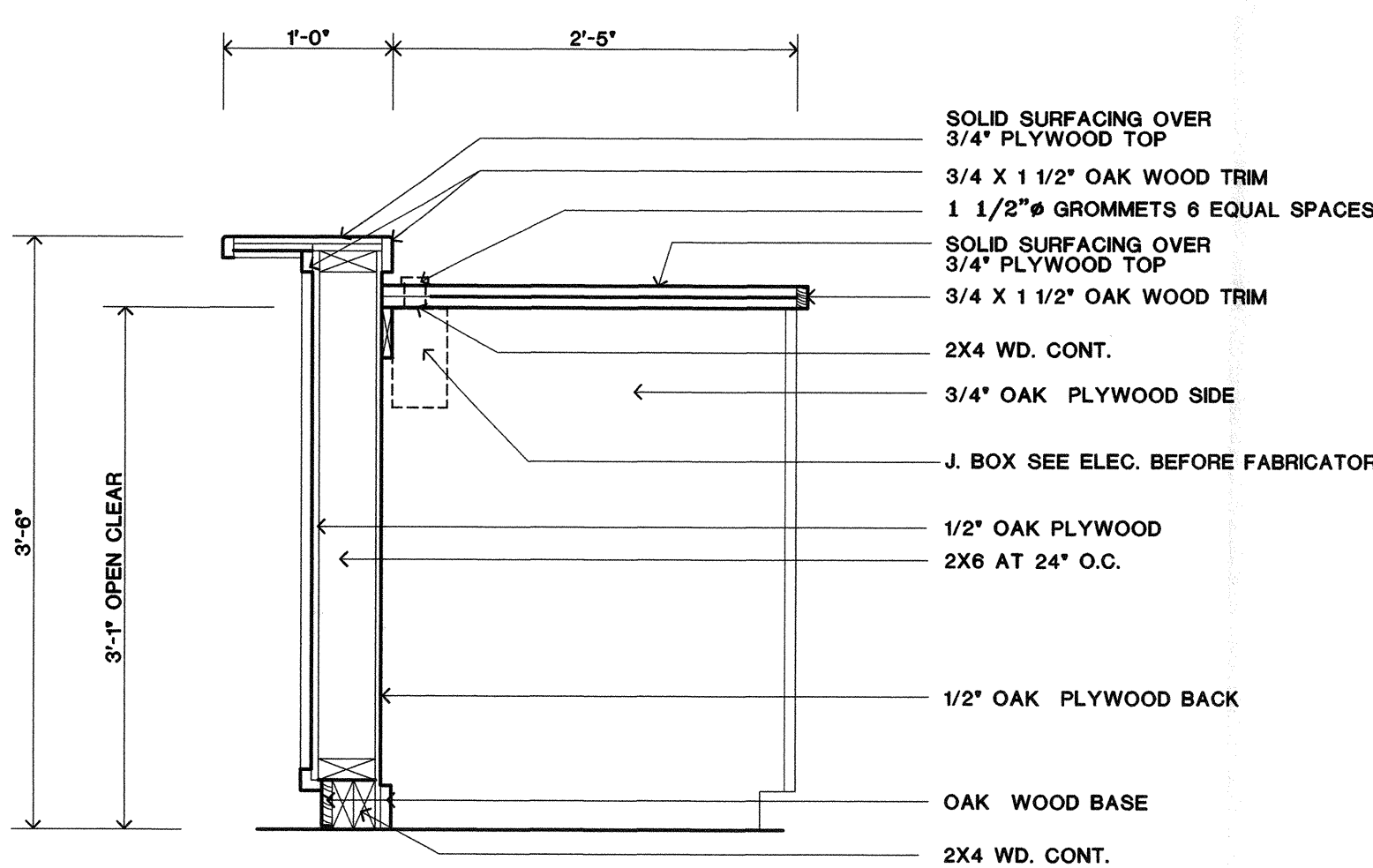
**15** GUARDRAIL  
3\"/>



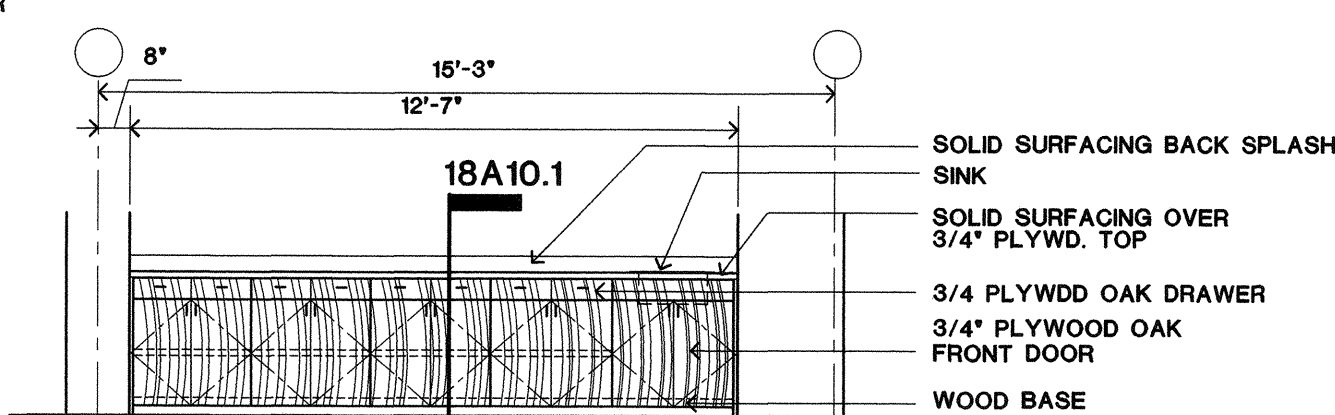
**16** HANDRAIL  
MTG. RM. AT CONC. STEPS  
3\"/>



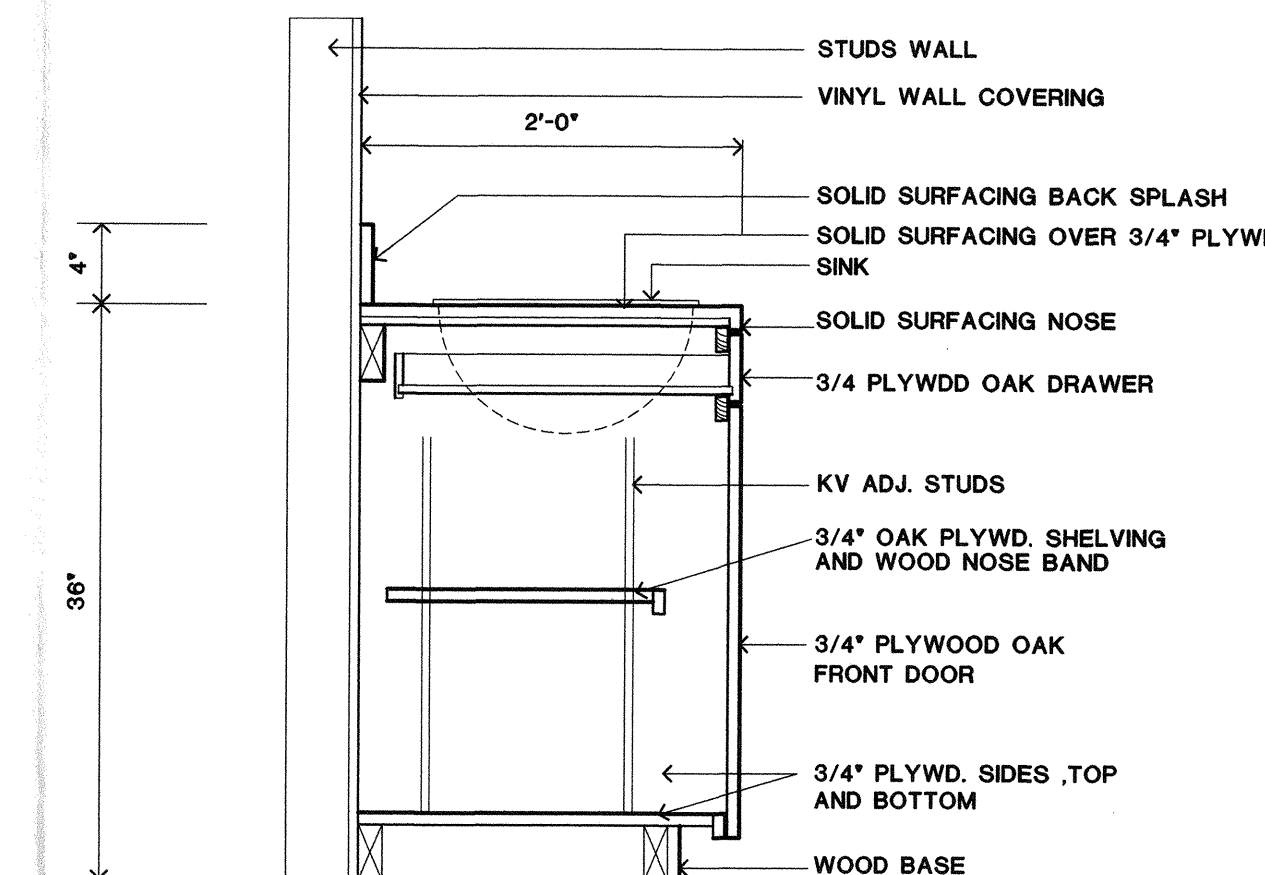
**11** FRONT ELEV. - CONTROL DESK  
1/4" - 1'-0"



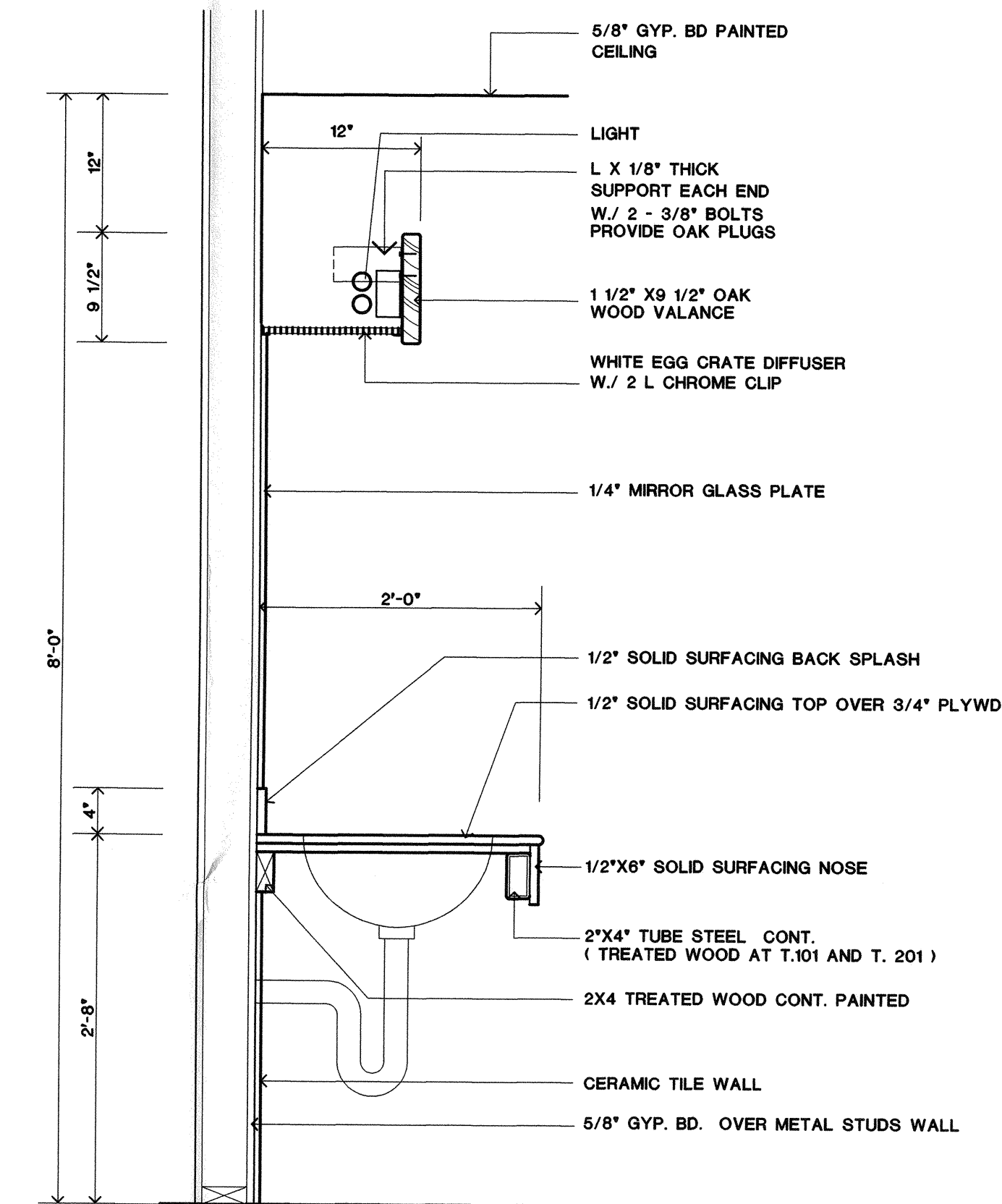
**12** SECTION  
1' - 1'-0"



**17** CABINET  
1/4" - 1'-0"



**18** CABINET  
1' - 1'-0"



**9** MEN- WOMEN - TOILETS  
1'-1'-0"



LIGO-D000283-00-L

INTERIOR ELEVATIONS - DETAIL LIGO-D000283-00-L

NEW STAGING BUILDING FOR

L I G O

LIVINGSTON, LOUISIANA

DATE 9-8-2000 SHEET

A10.1

OF

JOHN DESMOND & ASSOCIATES ARCHITECTS/PLANNERS  
703 LAUREL ST. BATON ROUGE, LA. 70802  
MEMBER AMERICAN INSTITUTE OF ARCHITECTS

