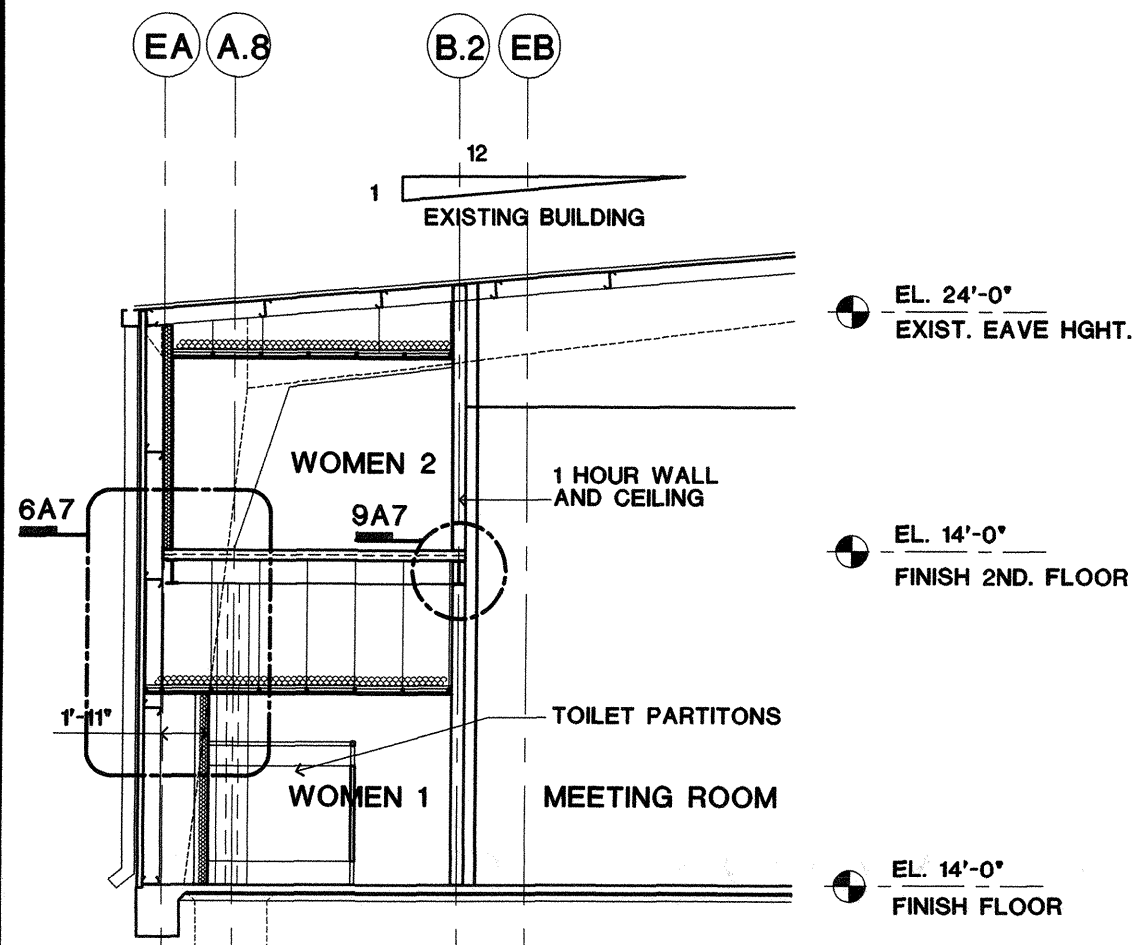
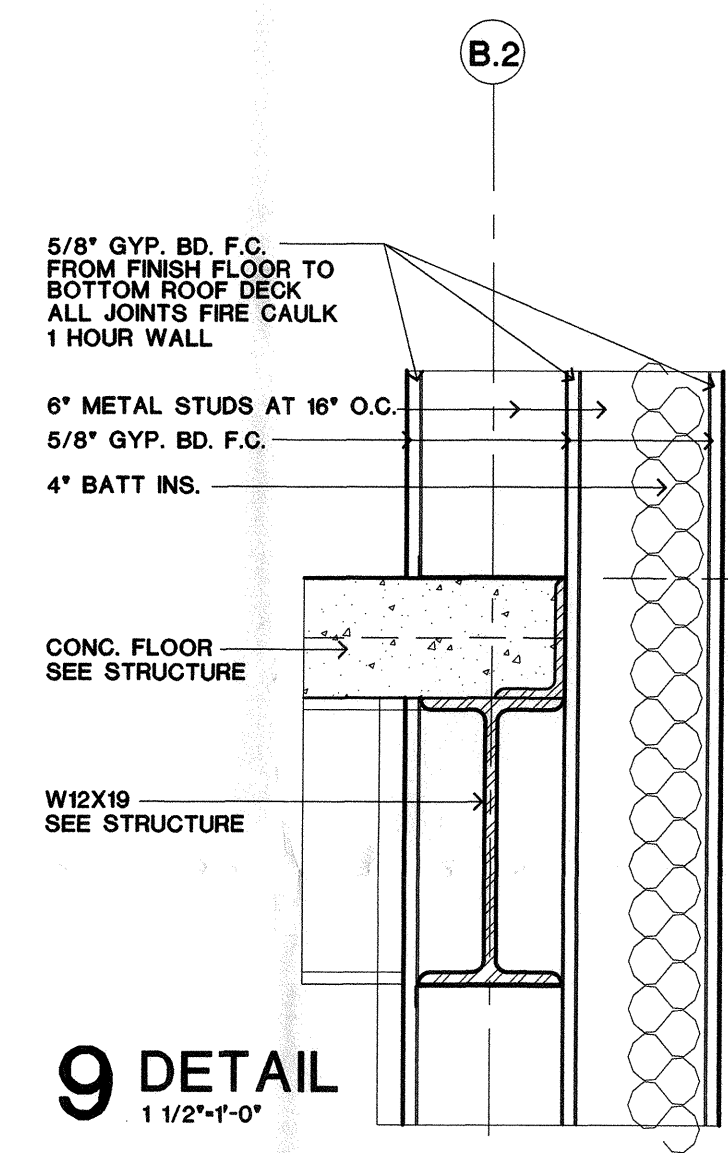


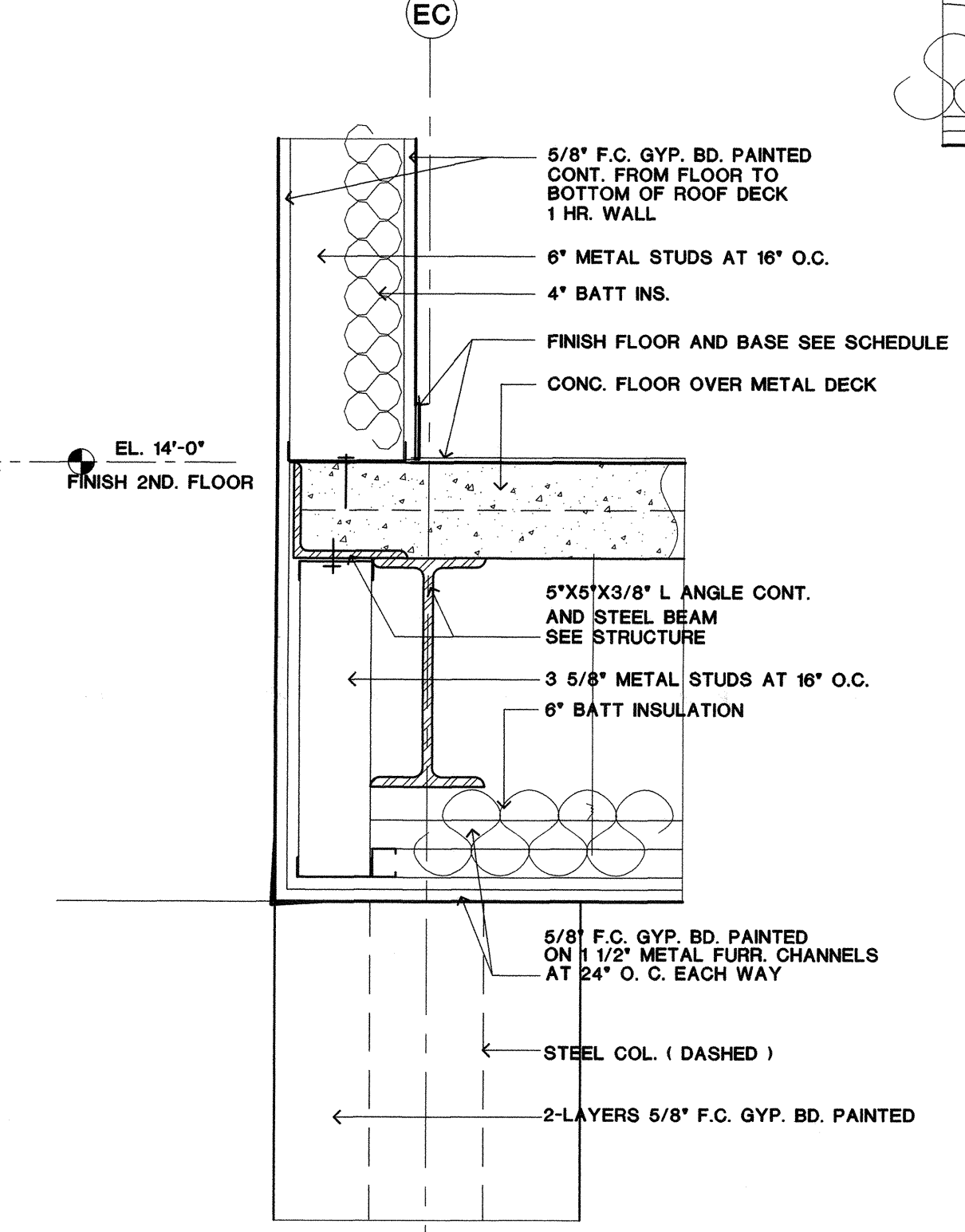
1 BUILDING SECTION
1/8"-1'-0"



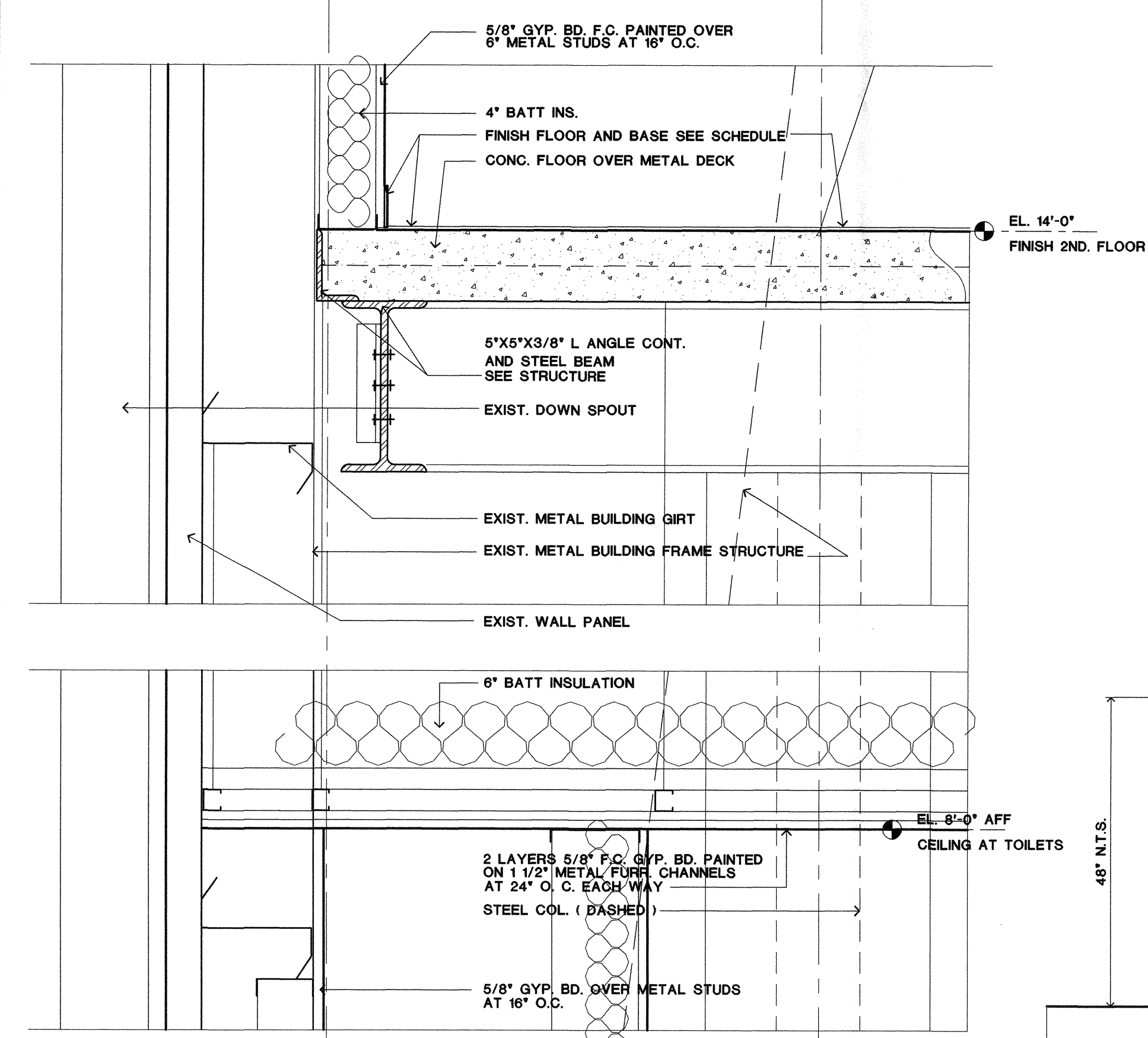
2 BUILDING SECTION
1/8"-1'-0"



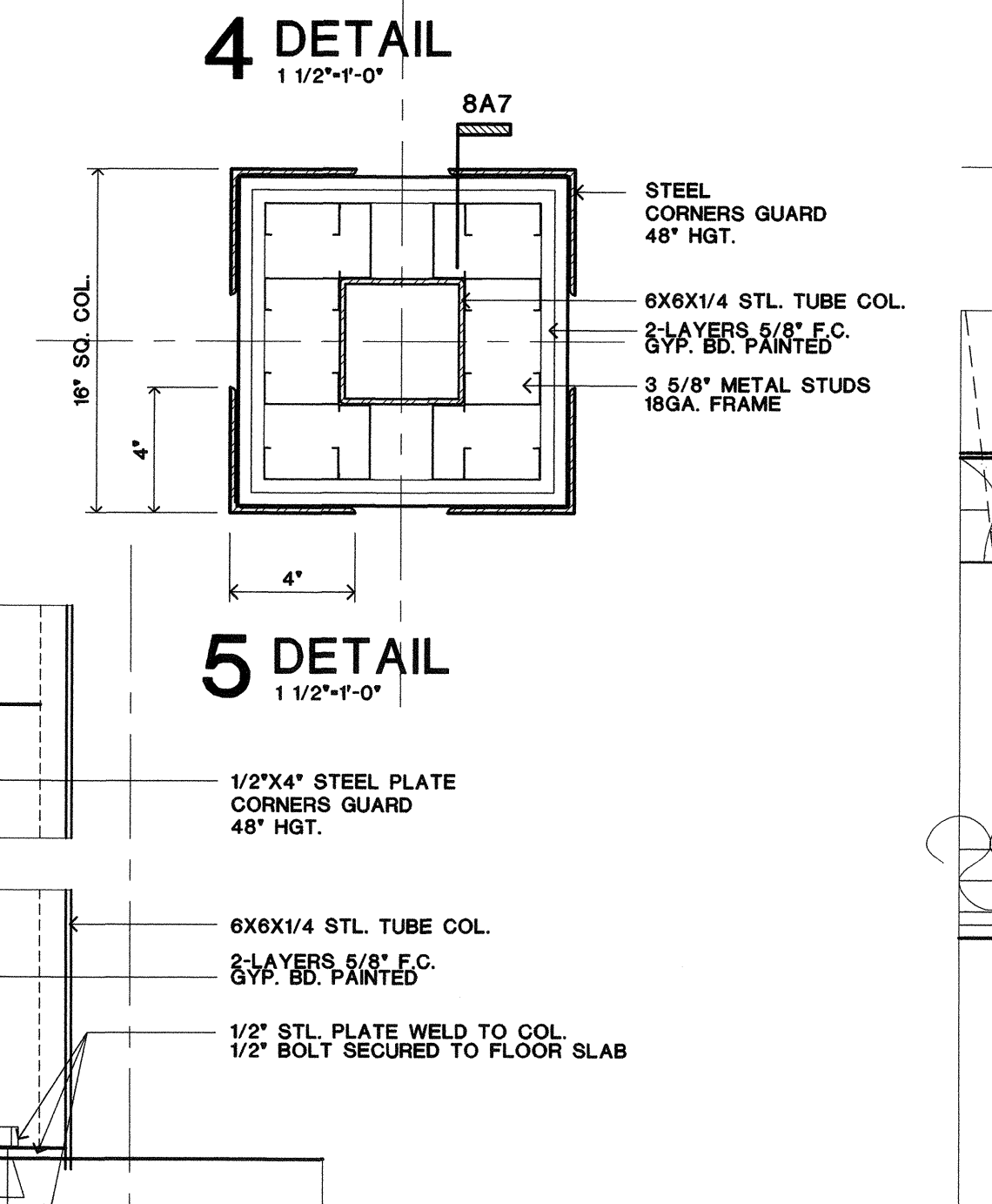
9 DETAIL
1 1/2"-1'-0"



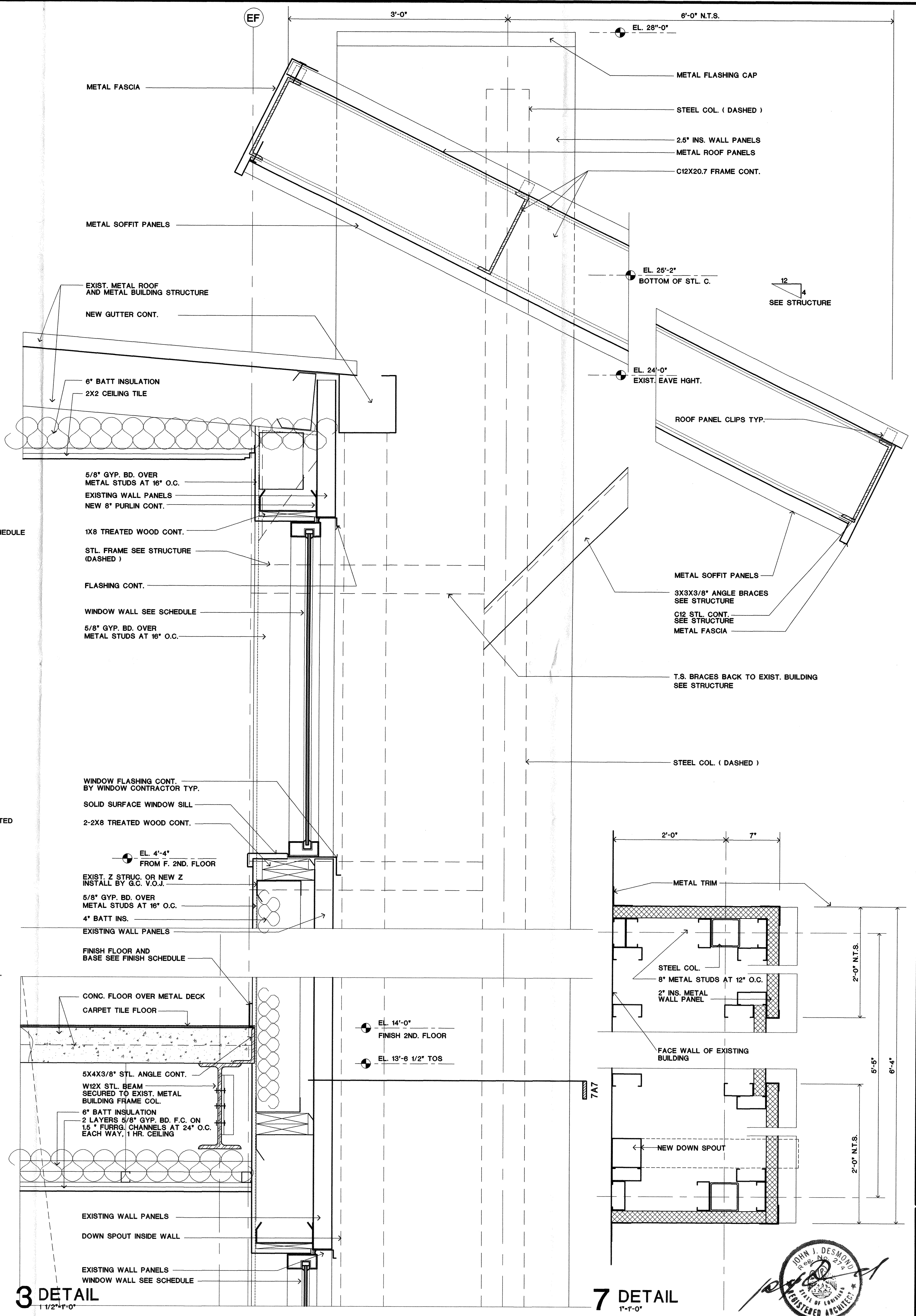
4 DETAIL
1 1/2"-1'-0"



6 DETAIL
1 1/2"-1'-0"



5 DETAIL
1 1/2"-1'-0"



3 DETAIL
1 1/2"-1'-0"

7 DETAIL
1'-1'-0"

JOHN DESMOND & ASSOCIATES ARCHITECTS/PLANNERS
 703 LAUREL ST. BATON ROUGE, LA. 70802
 MEMBER AMERICAN INSTITUTE OF ARCHITECTS
LIGO
 LIVINGSTON, LOUISIANA
BUILDING SECTION - DETAILS LIGO-D000279-00-L
 NEW STAGING BUILDING FOR
LIGO
 DATE 9-8-2000
 SHEET **A7**
 OF

