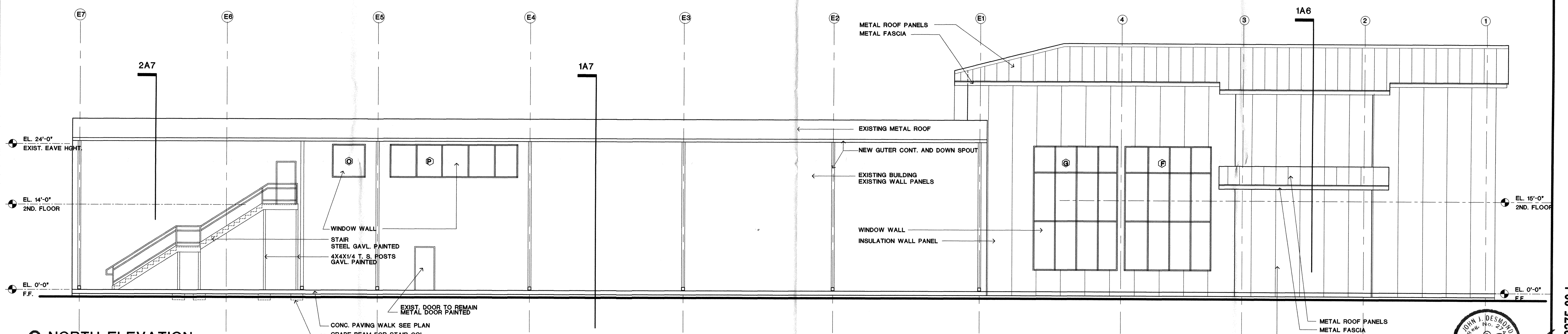
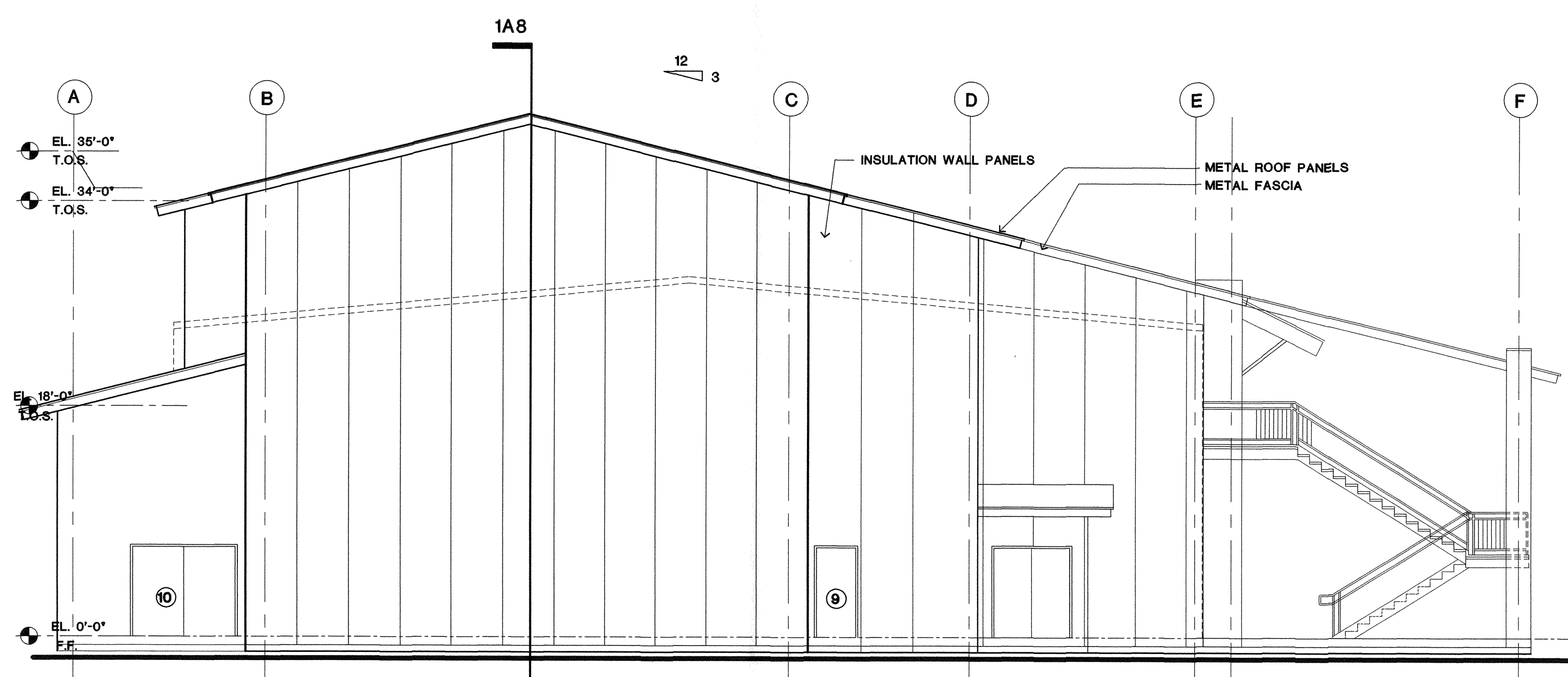


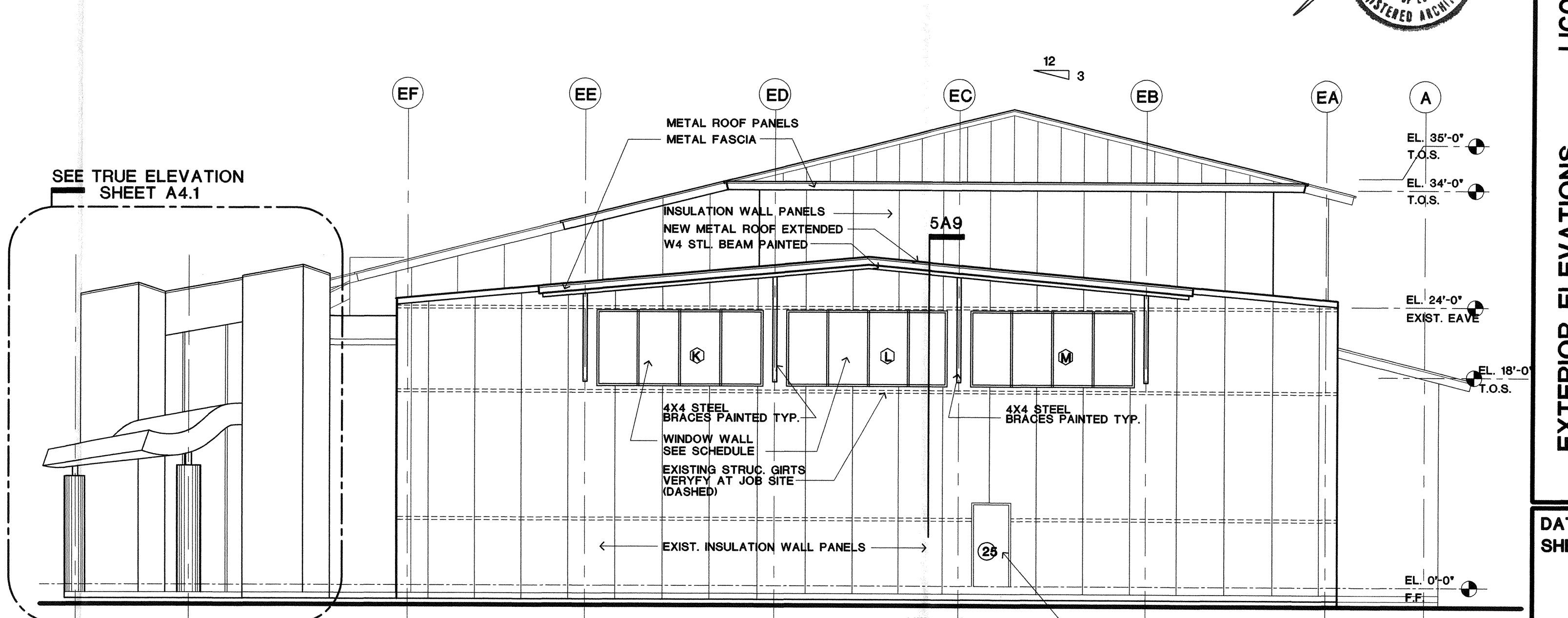
1 SOUTH ELEVATION
1/8"=1'-0"



2 NORTH ELEVATION
1/8"=1'-0"



3 WEST ELEVATION
1/8"=1'-0"



4 EAST ELEVATION
1/8"=1'-0"



JOHN DESMOND & ASSOCIATES ARCHITECTS/PLANNERS
 703 LAUREL ST. BATON ROUGE, LA. 70802
 MEMBER AMERICAN INSTITUTE OF ARCHITECTS
LIGO
 LIVINGSTON, LOUISIANA
 EXTERIOR ELEVATIONS
 NEW STAGING BUILDING FOR
 LIGO
 LIVINGSTON, LOUISIANA
 DATE 9-8-2000
 SHEET
A4
 OF

LIGO-D000275-00-L