

LIGO Laboratory / LIGO Scientific Collaboration

LIGO- E1000313

LIGO

April 4th, 2012

**aLIGO HAM-ISI, Pre-integration Test Report, Phase I,
LHO Unit #4 (post-assembly, before storage, after replacement
of faulty parts)**

E1000313 – V1

Hugh Radkins, Jim Warner, Robinson Mitchel, Corey Gray, Gregory Grabeel, Eric Allwine
Hugo Paris, Fabrice Matchard, Vincent Lhuillier

Distribution of this document:
Advanced LIGO Project

This is an internal working note
of the LIGO Laboratory

California Institute of Technology
LIGO Project – MS 18-34
1200 E. California Blvd.
Pasadena, CA 91125
Phone (626) 395-2129
Fax (626) 304-9834
E-mail: info@ligo.caltech.edu

LIGO Hanford Observatory
P.O. Box 1970
Mail Stop S9-02
Richland WA 99352
Phone 509-372-8106
Fax 509-372-8137

Massachusetts Institute of Technology
LIGO Project – NW22-295
185 Albany St
Cambridge, MA 02139
Phone (617) 253-4824
Fax (617) 253-7014
E-mail: info@ligo.mit.edu

LIGO Livingston Observatory
P.O. Box 940
Livingston, LA 70754
Phone 225-686-3100
Fax 225-686-7189

Table of contents:

Introduction..... 2

I. Pre-Assembly Testing..... 3

- Step 1: Position Sensors 3
- Step 2: GS13 4
- Step 3: Actuators 9

II. Tests to be performed during assembly..... 10

- Step 1: Parts Inventory (E1000052)..... 10
- Step 2: Check torques on all bolts..... 11
- Step 3: Check gaps under Support Posts..... 11
- Step 4: Pitchfork/Boxwork flatness before Optical Table install 12
- Step 5: Blade spring profile 12
- Step 6: Gap checks on actuators-after installation on Stage 1 13
- Step 7: Check level of Stage 0 14
- Step 8: Check level of Stage 1 Optical Table 15
- Step 9: Mass budget 16
- Step 10: Shim thickness 18
- Step 11: Lockers adjustment..... 18

III. Tests to be performed after assembly 19

- Step 1 - Electronics Inventory..... 19
- Step 2 - Set up sensors gap..... 19
- Step 3 - Measure the Sensor gap 20
- Step 4 - Check Sensor gaps after the platform release..... 20
- Step 5 – Performance of the limiter 21
- Step 5.1 - Test N°1 - Pushing “in the general coordinates” 21
- Step 5.2 - Test N°2 – Pushing “locally” 21
- Step 6 - Position Sensors unlocked/locked Power Spectra 22
- Step 7 - GS13 power spectrum -tabled tilted 25
- Step 8- GS13 pressure readout..... 26
- Step 9 - Coil Driver, cabling and resistance check 27
- Step 10 - Actuators Sign and range of motion (Local drive)..... 28
- Step 11 - Vertical Sensor Calibration 29
- Step 12 - Vertical Spring Constant 30
- Step 13 - Static Testing (Tests in the local basis) 30
- Step 14 - Linearity test..... 31
- Step 15 - Cartesian Basis Static Testing 33
- Step 16- Frequency response 34
- Step 16.1 - Local to local measurements 34
- Step 16.2 - Cartesian to Cartesian measurements 36
- Step 17 - Transfer function comparison with Reference 38
- Step 17.1 - Local to local - Comparison with Reference 38
- Step 17.2 - Cartesian to Cartesian - Comparison with Reference..... 41
- Step 18 - Lower Zero Moment Plane..... 44
- Step 19 - Damping loops..... 45
- Step 19.1 - Transfer functions - Simulation 45
- Step 19.2 - Powerspectra – Experimental 47

IV. HAM-ISI Unit #4 testing summary 49

Introduction

HAM-ISI Unit #4 was assembled during March 2012. The testing of this Unit is presented here. It started on March 28th 2012 and lasted until April 4th 2012.

Stage-0 L4Cs were not installed during tests. L4C brackets were installed.

The procedure document used to perform these tests is:

- E1000309-V9 - aLIGO HAM-ISI, Pre-Integration Testing Procedure, Phase I (post assembly, before storage)

The report done prior to HAM-ISI Unit #2 disassembly/reassembly is posted under V3:

- E1000311_aLIGO_SEI_Testing_Report_HAM-ISI_LHO_Unit_2_V3

Other useful information can be found in:

- E1000300 - HAM-ISI LLO test stand: software and electronic check

Remark regarding SVN paths:

Units need to be tested under a folder that matches medm channels' names. Since MEDM channels' names all refer to HAMX during this phase of testing, units are all tested under:

`/SeiSVN/seismic/HAM-ISI/X1/HAMX/`

Once a unit is tested, a folder called after its order of assembly is created. For Unit #4 the name of this folder will be:

`/SeiSVN/seismic/HAM-ISI/X1/Unit_4/`

Test data is then moved from HAMX testing folder to this final folder. All the data related to the Phase I testing of this unit is then stored in this folder. The data set names, the location of the test results, and the locations of the programs used to obtain them are specified along this document.

Even if they are tested under HAMX, units are called per their order of assembly in programs, figures and data files.

I. Pre-Assembly Testing

▪ Step 1: Position Sensors

S/N sensor	S/N board	ADE Gap Standoff (mm)	Location on the Jig	Gap Standoff on Jig (mm/in)	Voltage before zeroing	Voltage after zeroing. Prebake	Voltage after zeroing. Post bake
12046	11881	NR	x	~2.057	X	~.01	x
12018	11872	NR	x	~2.057	X	~.01	x
12034	11933	NR	x	~2.057	X	~.01	x
12042	11932	NR	x	~2.057	X	~.01	x
12070	NR	NR	x	NR	X	NR	x
12081	NR	NR	x	NR	X	NR	x

Note: The back panel reads 0.508V/0.001"

NR: not recorded

Sensors noise spectra measured before baking E1000257, and before shielding per procedure T1000636:

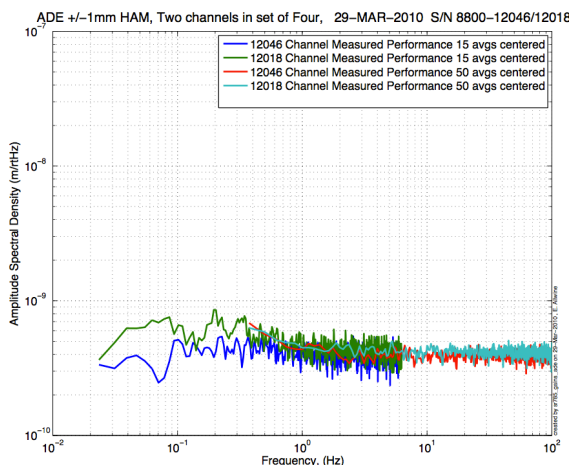


Figure - H1 and V1 sensor noise

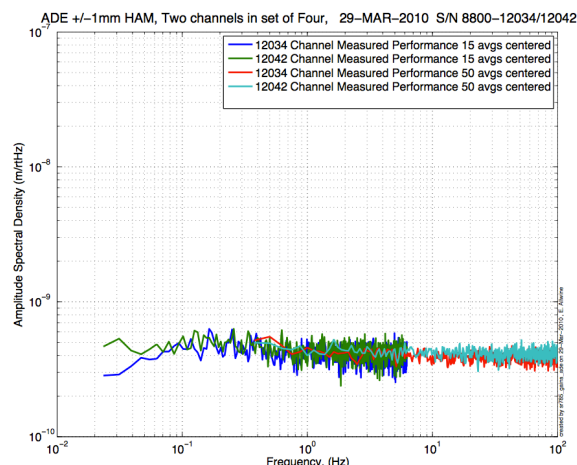


Figure - H2 and V2 sensor noise

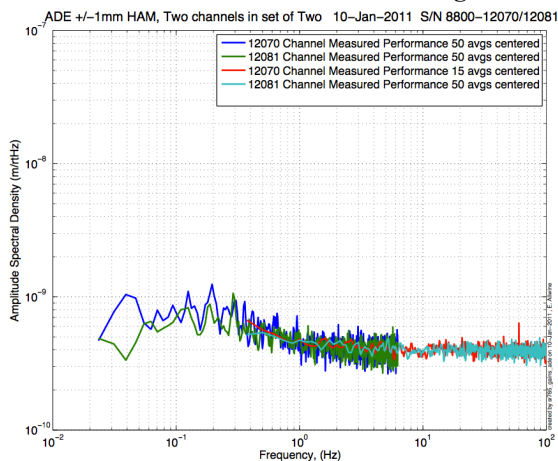


Figure - H3 and V3 sensor noise

Issues/difficulties/comments regarding this test:

- The CPS #12070 (H3) #12081 (V3) are borderline. Their spectra are within requirements at the requirement points but magnitudes get higher passed these points.
- Test information is missing for CPSs 12070 and 12081.

Acceptance Criteria:

- Power spectrum magnitudes must be lower than:
 - o 9.e-10 m/ $\sqrt{\text{Hz}}$ at 0.1Hz
 - o 6.e-10 m/ $\sqrt{\text{Hz}}$ at 1Hz

Test result:

Passed: X

Failed: ___

▪ **Step 2: GS13**

Data related to GS-13 post podding testing can be found in the SVN at:

`\SeismicSVN\seismic\Common\Data\aLIGO_GS13_TestData\PostMod_TestResults_PDFs.`

Power spectra measured at reception, after shipment from LLO, can be found at

`\SeismicSVN\ seismic\Common\Data\aLIGO_GS13_TestData_LHO\`

aLIGO GS13 Testing page is E1100367. It contains links to:

- LIGO-E1000058: aLIGO GS-13 Status Chart
- LIGO-24: aLIGO GS-13 as received testing results
- LIGO-E1100394: aLIGO GS-13 prior shipping testing results
- LIGO-E1100395: aLIGO GS-13 Post Modification testing results
- LIGO-F0900070: GS-13 Inspection Checklist

		Corner 1	Corner 2	Corner 3
V	Pod	88	14	30
	Instrument	692	693	715
H	Pod	44 (2)	93	07 (2)
	Instrument	782	814	788

Table- GS13 instrument and Pod S/Ns

(2): Taken from Unit #2

▪ *Step 2.1 – Horizontal GS-13s*

Huddle testing

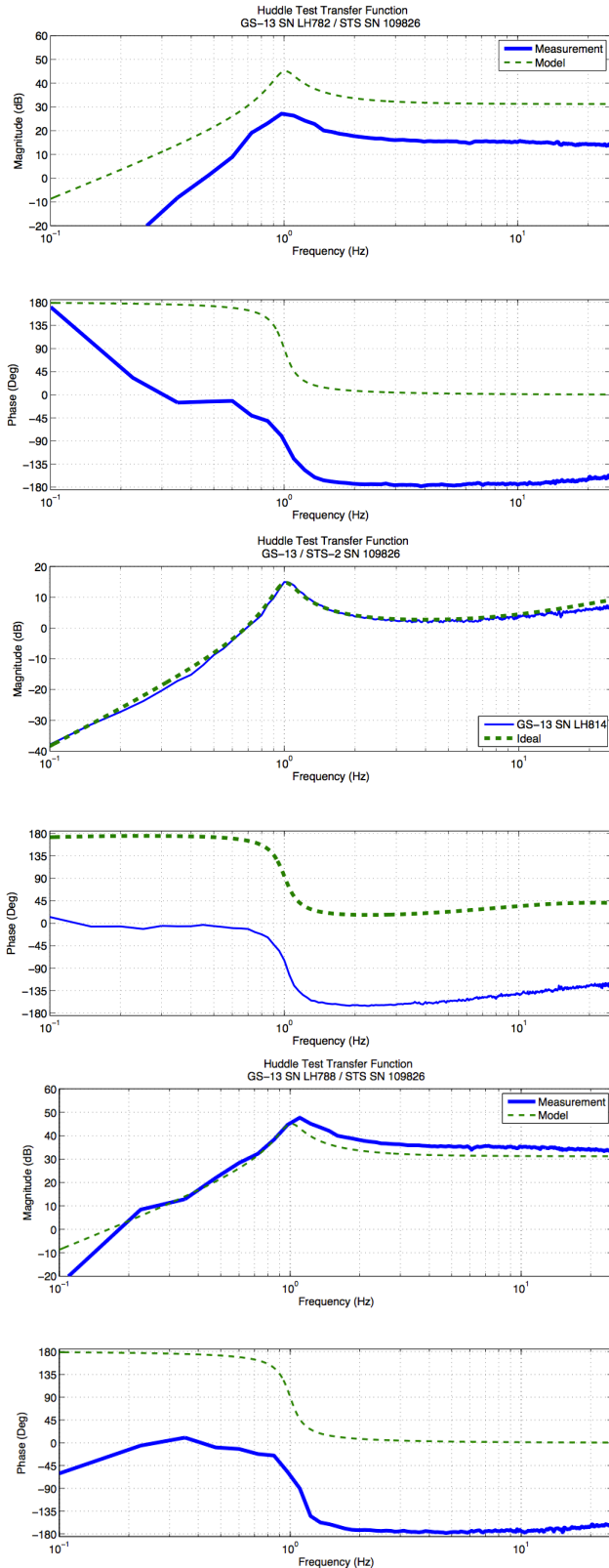


Figure - Huddle testing of Horiz GS-13 782(H1), 814(H2), and 788(H3) after aLIGO modifications

▪ *Step 2.2 – Vertical GS-13s*

Huddle testing

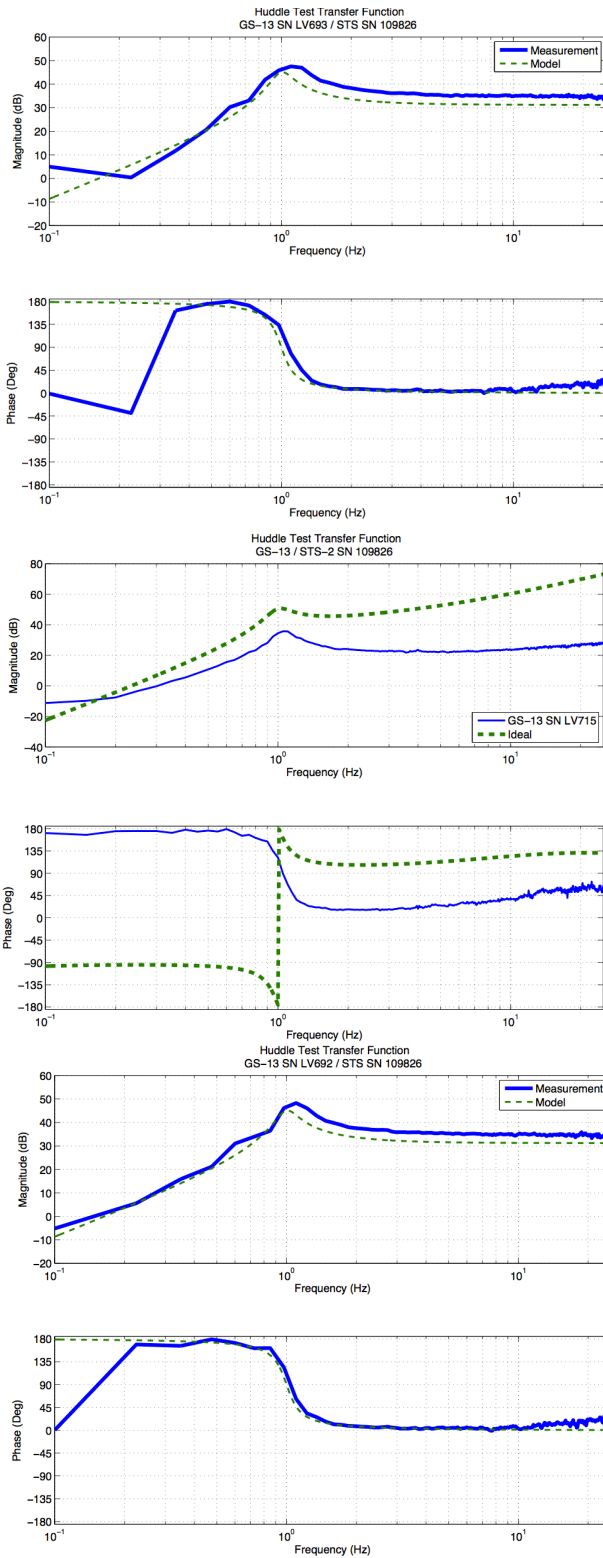


Figure - Huddle testing of Vertical GS-13 693(V1), 715(V2), and 692(V3) after aLIGO modifications

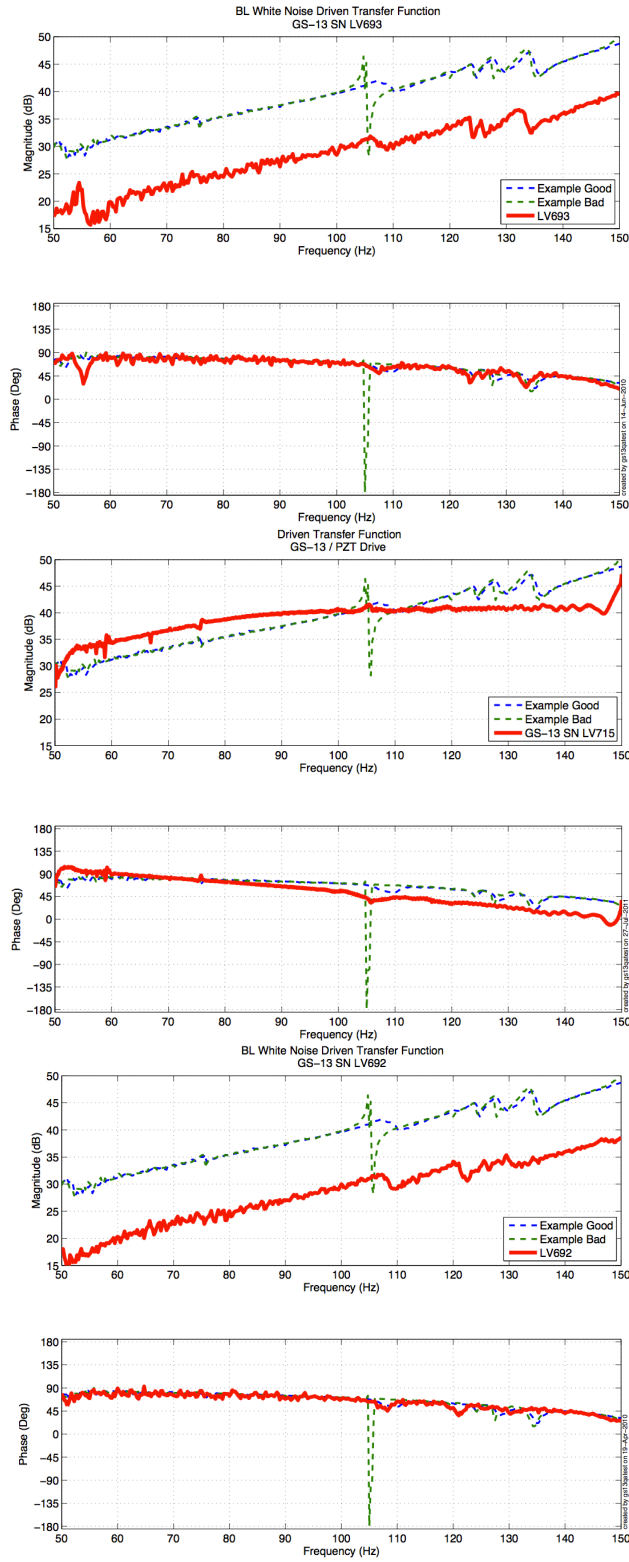


Figure - Driven testing of Vertical GS-13 693(V1), 715(V2), and 692(V3) after aLIGO modifications

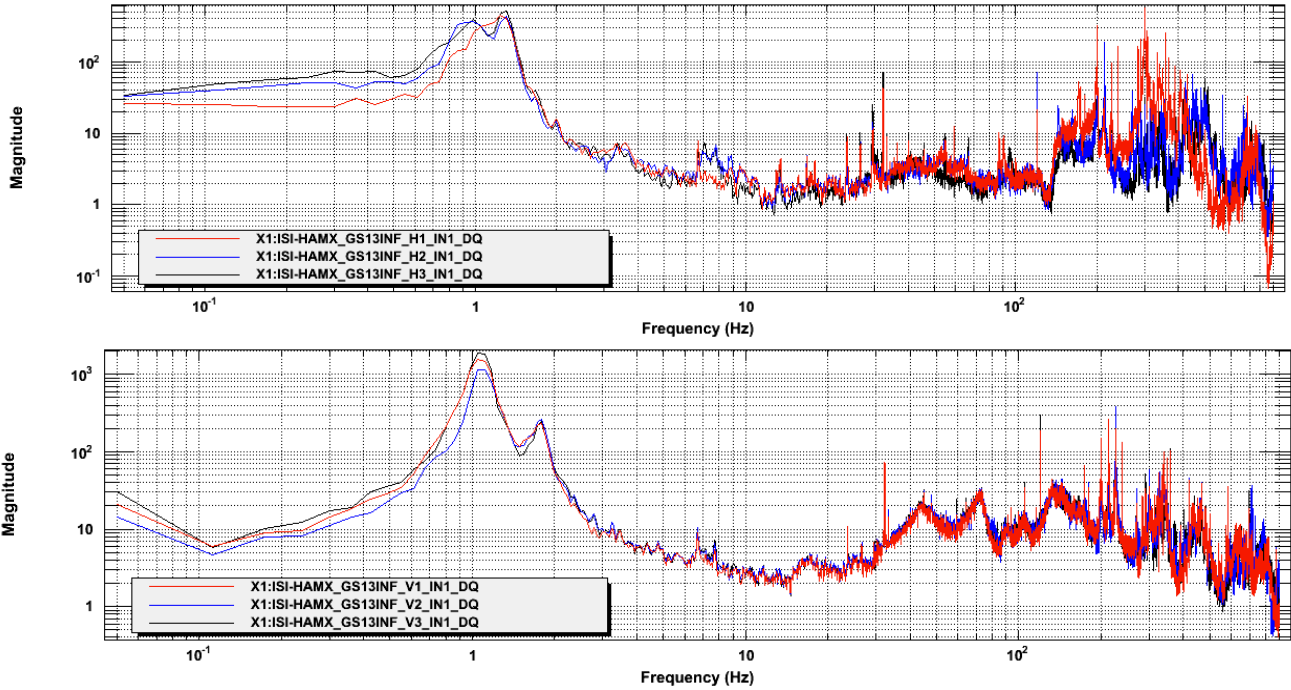


Figure - GS13 Power Spectra after installation at LHO

Issues/difficulties/comments regarding this test:

5 GS13-pods were shipped from LLO (shipment #3417) to be installed on this Unit. This shipment contained 3 Vertical GS13s, 2 horizontal ones. The third horizontal GS13 needed to test this Unit was supposed to be taken from Unit #2 which was tested just before. However, One of the horizontal pods shipped from LLO (Pod #24) was malfunctioning, and discarded, after reception (see LHO aLog # 2449). Finally, two GS13 pods were taken from HAM-ISI Unit #2 to complete the production-GS13-set of HAM-ISI Unit #4:

- Pod #44, horizontal
- Pod #07, horizontal

Acceptance Criteria:

- GS13 have already been tested at LLO. GS13 Inspection/Pod Assembly is described in document D047810. Checklist is defined in F090070-v6
- After reception the geophones at LHO, ASDs of the geophones must confirm that they are still functioning after shipping.

Test result:

Passed: X **Failed:**

▪ **Step 3: Actuators**

Actuator data can be found at: T0900564-V2. Actuator inventory is made at Section II – Step 1.

Actuator Serial #: L124 Operator Name: Gordon, Matt Date: 1/29/2010 Time: 1:42 PM Actuator Coil Resistance: 6.38 Ohms, PASS Ambient Temperature: 71.3 F Hi Pot Test Results: 1000 MOhms, PASS X Travel Limit (inches): 0.524 Y Travel Limit (inches): 0.204 Z Travel Limit (inches): 0.503	Actuator Serial #: L108 Operator Name: Gordon, Matt Date: 1/30/2010 Time: 10:04 AM Actuator Coil Resistance: 6.45 Ohms, PASS Ambient Temperature: 64.8 F Hi Pot Test Results: 1000 MOhms, PASS X Travel Limit (inches): 0.527 Y Travel Limit (inches): 0.205 Z Travel Limit (inches): 0.505
Actuator Serial #: L099 Operator Name: Gordon, Matt Date: 1/28/2010 Time: 2:36 PM Actuator Coil Resistance: 6.46 Ohms, PASS Ambient Temperature: 72.0 F Hi Pot Test Results: 1000 MOhms, PASS X Travel Limit (inches): 0.528 Y Travel Limit (inches): 0.204 Z Travel Limit (inches): 0.503	Actuator Serial #: L051 Operator Name: Gordon, Matt Date: 9/24/2009 Time: 8:35 AM Actuator Coil Resistance: 6.38 Ohms, PASS Ambient Temperature: 68.8 F Hi Pot Test Results: 1000 MOhms, PASS X Travel Limit (inches): 0.520 Y Travel Limit (inches): 0.205 Z Travel Limit (inches): 0.506
Actuator Serial #: L107 Operator Name: Gordon, Matt Date: 1/30/2010 Time: 10:22 AM Actuator Coil Resistance: 6.58 Ohms, PASS Ambient Temperature: 64.8 F Hi Pot Test Results: 1000 MOhms, PASS X Travel Limit (inches): 0.528 Y Travel Limit (inches): 0.205 Z Travel Limit (inches): 0.503	Actuator Serial #: L064 Operator Name: Gordon, Matt Date: 9/25/2009 Time: 9:50 AM Actuator Coil Resistance: 6.38 Ohms, PASS Ambient Temperature: 72.7 F Hi Pot Test Results: 1000 MOhms, PASS X Travel Limit (inches): 0.529 Y Travel Limit (inches): 0.205 Z Travel Limit (inches): 0.505

Acceptance Criteria:

- Actuators were previously tested and results are reported in T0900564-V2.

Test result:

Passed: X **Failed:**

II. Tests to be performed during assembly

- *Step 1: Parts Inventory (E1000052)*

DCC Number	Part name	Configuration	Corner 1 S/N	Corner 2 S/N	Corner 3 S/N
D071001	Stage 0 base	NA	11		
D071051	Stage 1 base	NA	11		
D071050	Optical table	NA	12		
D071002	Spring Post	NA	18	19	16
D071100	Spring	NA	12	8	47
D071102	Flexure	NA	10	17	9
ADE	Position sensor	Horizontal	12046 Master 0	12034 slave 180	12070 Slave 0
		Vertical	12018 slave 180	12042 slave 0	12081 Slave 180
D047812	GS-13 pod	Horizontal	44 (2)	93	07 (2)
		Vertical	88	14	30
D047823	L4C pod	Horizontal	NA	NA	NA
		Vertical	NA	NA	NA
D0902749	Actuator	Horizontal	124	99	107
		Vertical	108	51	64

Table – Parts inventory

Cable Connects		Cable S/N		
Part Name	Configuration	Corner 1	Corner 2	Corner 3
GS13	Horizontal	S110668 (100")	S1106657	S1104775 (40")
GS13	Vertical			
L4C	Horizontal	NA	NA	NA
L4C	Vertical	NA	NA	NA
Actuator	Horizontal	S1104758	S1104764	S1104759
	Vertical	S1104746	S1104757	S1104770

Table – Cables inventory

NR: Not recorded; NA: Not applicable

2: Production GS13 taken from HAM-ISI Unit #2.

- *Step 2: Check torques on all bolts*

Acceptance Criteria:

- All bolts should trip the wrench, and start moving immediately after. If any bolts in a pattern move before torque is reached, recheck after all bolts are brought to spec.

Test result: **Passed:** X **Failed:** ___

- *Step 3: Check gaps under Support Posts*

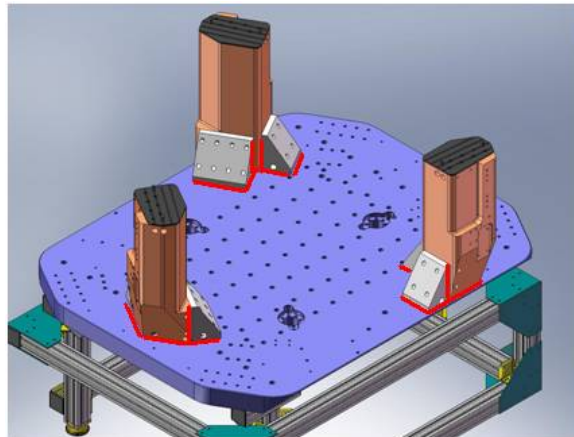


Figure - Showing edges that need checked on support posts and gussets

Acceptance Criteria:

- A 0.001 inch shim cannot be passed freely through any connection to Stage 0 or between post and gussets. If shim can pass through, loosen all constraining bolts, and then retighten iteratively from the center of the part to the edges. Retest.

Test result: **Passed:** X **Failed:** ___

- *Step 4: Pitchfork/Boxwork flatness before Optical Table install*

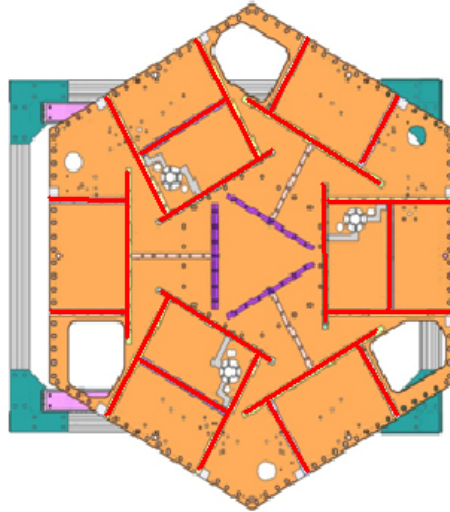


Figure – Showing what needs to be checked on Boxworks and Pitchforks

Acceptance Criteria:

- Shim inserted won't pass between parts.

Test result:

Passed: X

Failed: ___

- *Step 5: Blade spring profile*

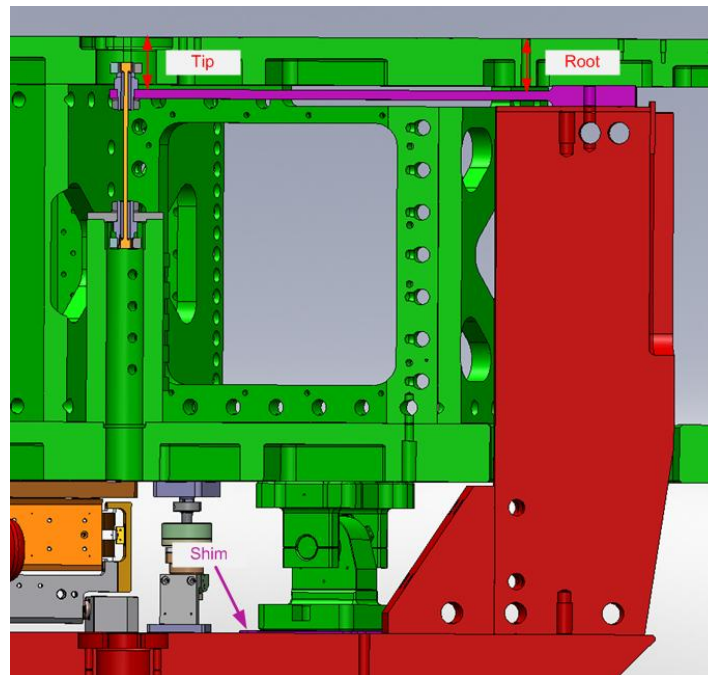


figure – Blade spring profile measurement points

Blade #	Root (Mils)	Tip(Mils)	Flatness (mils)
1	640	633	7
2	644	631	13
3	640	637	3

Table 1 - Blade profile

Acceptance Criteria:

- Blades must be flat within 0.015" inches.

Note that the tip measurement should be constant and that root value can be impacted by shims change.

Test result: **Passed:** X **Failed:**

▪ *Step 6: Gap checks on actuators-after installation on Stage 1*

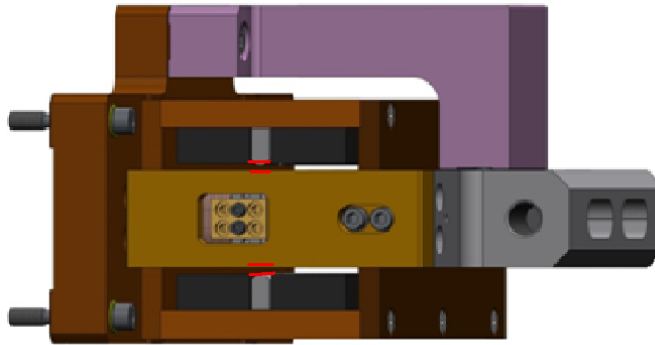


Figure - Showing gaps that need to be checked on actuators.

Issues/difficulties/comments regarding this test:

Since layers of shims are difficult to use accurately, a Go (70mils shim set) vs. No Go (90 mils shim set) technique was used for this test. To pass the test an actuator gap has to allow the 70mils shim set to be inserted and refuse the 90mils shim set.

The gaps on the backside of horizontal actuators are hard to access.

Acceptance Criteria

- Gaps must be within 0.010” of design (i.e. 0.090” and .070” pass, but 0.095” and 0.065” doesn’t).

Test result: **Passed:** X **Failed:**

- *Step 7: Check level of Stage 0*

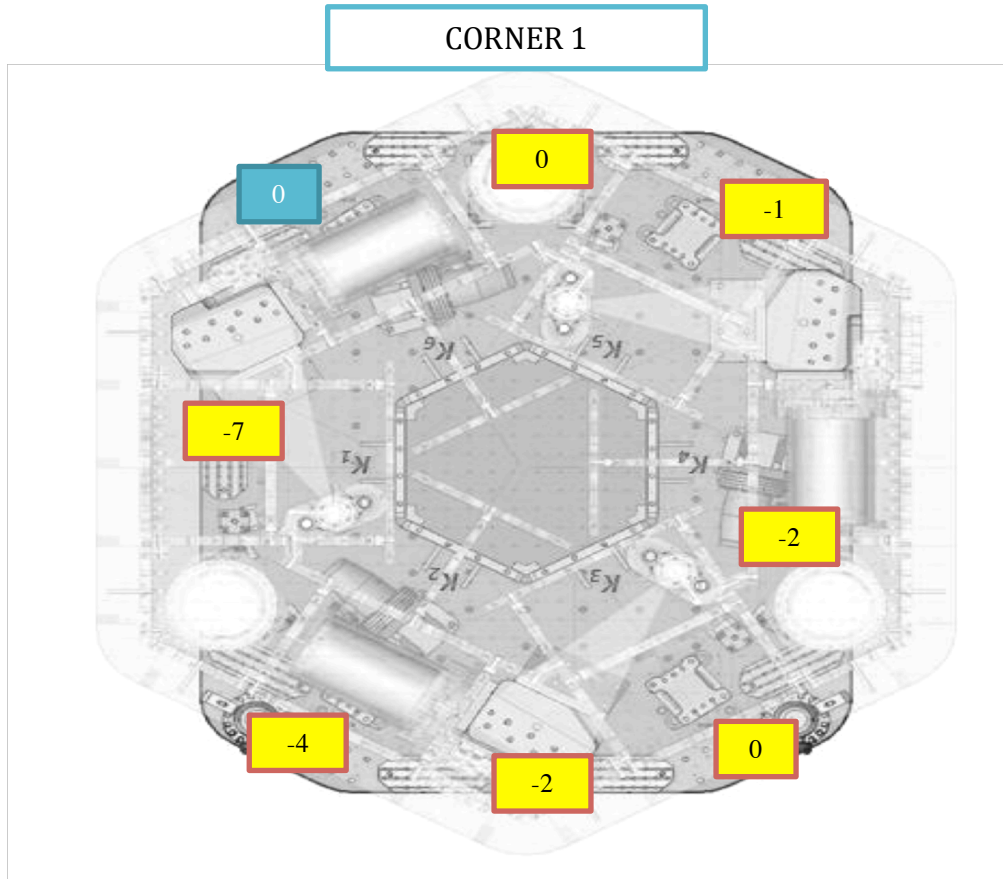


Figure – Level measured on Stage 0

Issues/difficulties/comments regarding this test:

The accuracy of the measurement limited by the measurement tool: optical level + ruler on a block. The ruler only has 1/100” graduations. Values are deduced from the relative distance to graduations. The uncertainty is about 1mil.

Max angle is calculated between the opposite points that have the most different level.

Max angle=0.005/57 (± 0.001/57) = 87.7 (±17.4) μrad

Acceptance Criteria

- The maximum angle of the table with the horizontal mustn't exceed ~100μrad

Test result:

Passed: X

Failed:

▪ **Step 8: Check level of Stage 1 Optical Table**

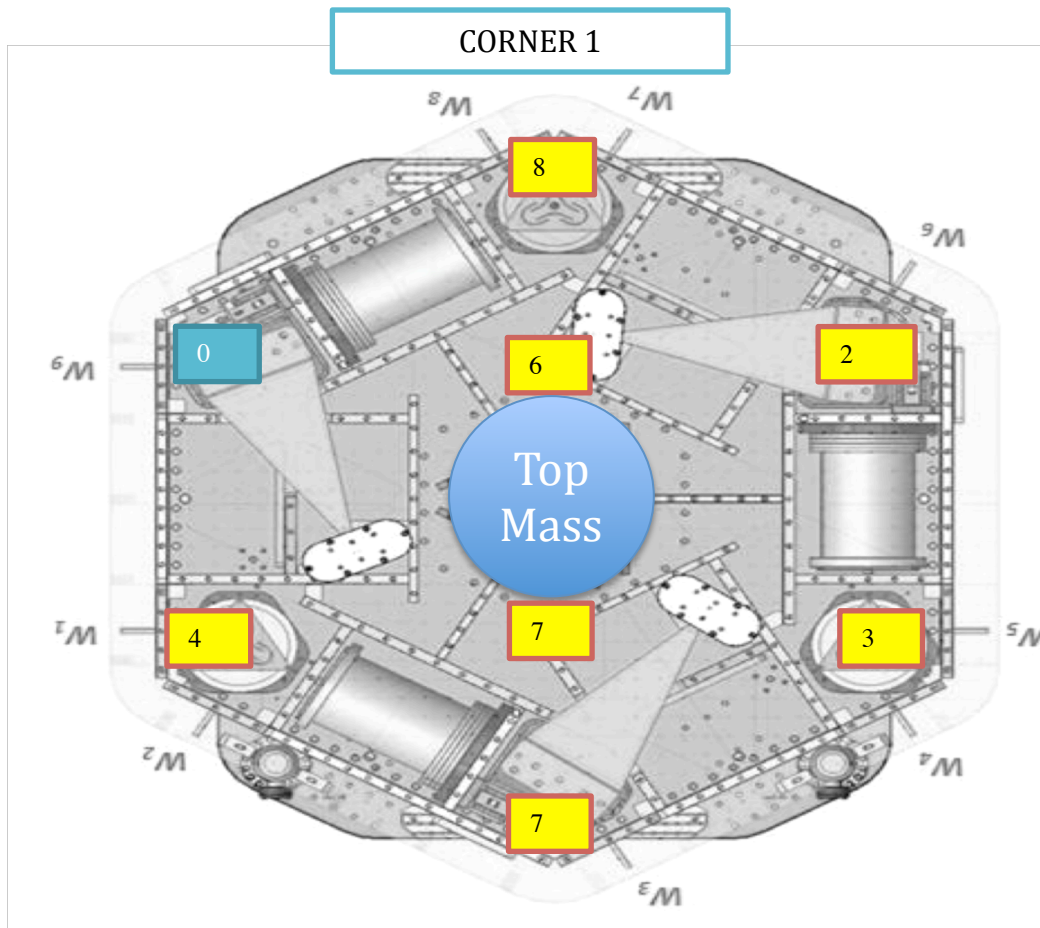


Figure – Level measured on Stage 1

Issues/difficulties/comments regarding this test:

The accuracy of the measurement is limited by the measurement tool: optical level + ruler on a block. The ruler only has 1/100” graduations. Values are deduced from the relative distance to graduations. The uncertainty is about 1mil.

Max angle is calculated between the opposite points that have the most different level.

Max angle = $0.002/76 (\pm 0.001/76) = 26.3 (\pm 13.1) \mu\text{rad}$

Acceptance Criteria

- The maximum angle of the table with the horizontal mustn't exceed ~100μrad

Test result:

Passed: X **Failed:**

Note:

The level of the optical table is within requirement. However, its flatness seems a bit off. The pattern suggested by the measurement is a *flipped potato chip*, which is in contradiction with the location of the top mass. This shape might be caused by variations among the tolerance range for the height of the vertical walls of the ISI.

▪ *Step 9: Mass budget*

	00	01	02	03	04	05	06		
	0.6	1.1	2.2	4.5	7.9	15.6	27.2	lbs	kgs
W9				1	1	1	1	55.2	25.04
W1					1	1	1	50.7	23.00
W2	1						1	27.8	12.61
W3						1	1	42.8	19.41
W4						1	1	42.8	19.41
W5	1			1	2		1	48.1	21.82
W6	1				1		1	35.7	16.19
W7				1		1	1	47.3	21.45
W8		1			1		1	36.2	16.42
Side Masses Total	3	1	0	3	6	5	9	386.6	175.36

Table – Wall masses distribution

	00	01	02	03	04	05	06		
	0.6	1.1	2.2	4.5	7.9	15.6	27.2	lbs	kgs
K1						2		31.2	14.15
K2					1		1	35.1	15.92
K3						2		31.2	14.15
K4					1		1	35.1	15.92
K5						2		31.2	14.15
K6					1		1	35.1	15.92
Keel Masses Total	0	0	0	0	3	6	3	198.9	90.22

Table – Keel masses distribution

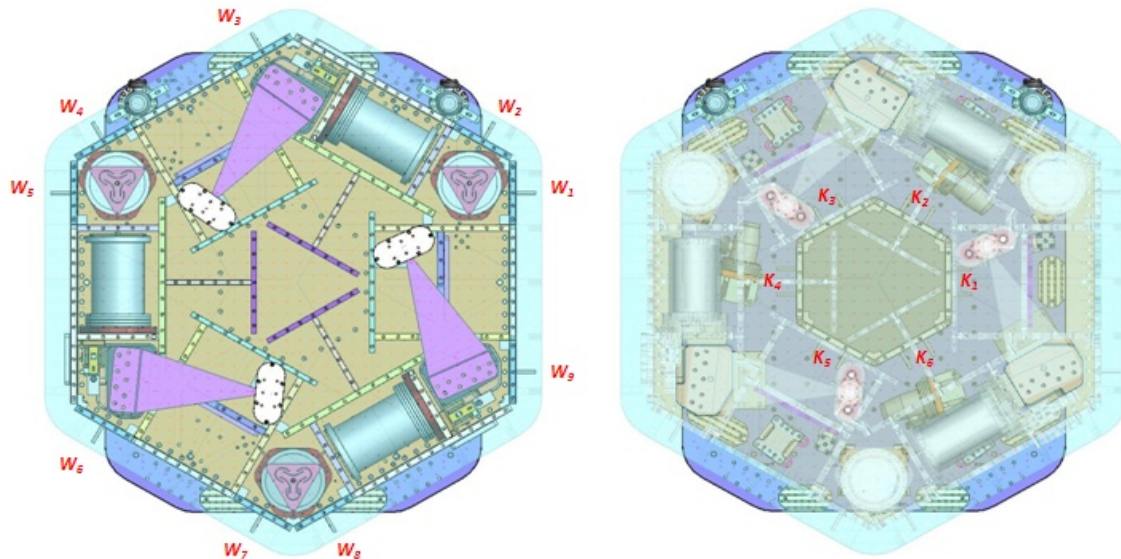
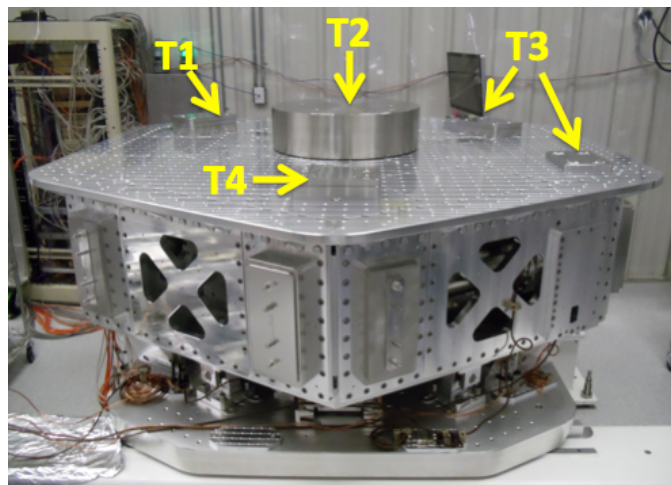


Figure – Wall Masses (W) and Keel masses (K) location. *South of picture = corner 1*

	Mass (kg)
T1	20.00
T2	270.79
T3	20.00
T4	15.00
Total	325.79

Table – Optic table masses distribution



Picture – Optic table masses distribution

	Side	Keel	Top	Total
Weigh (kg)	175.36	90.22	325.79	591.37

Table – Mass budget sum up

Issues/difficulties/comments regarding this test:

- T2 mass evaluated at nominal value: 270.79lbs. Gauge not available for measurement.
- A few shims were used for balancing. Their weight is negligible in comparison with the mass budget. Hence their weight is not reported in the mass budget.

Acceptance Criteria

The Mass budget must be

- 579.1 Kg (cf. E1100427) \pm 25Kg (5%)

Test result:

Passed: X

Failed:

▪ *Step 10: Shim thickness*

Lockers	Shim thickness (mils)
A	126
B	126
C	122
D	122

Table – Shims Thickness

Acceptance Criteria

- The shim thickness should be 125 mils \pm 5

Test result:

Passed: X

Failed:

▪ *Step 11: Lockers adjustment*

D.I. at Locker	Vertical D.I.	Horizontal D.I.
A	-0.1	0.4
B	1	-0.8
C	-0.5	-1.2
D	-0.9	-0.4

Table – Dial indicators read-out (in thousands of an inch)

Acceptance Criteria

- Vertical and horizontal displacement near the lockers must be lower than 2 mils (0.002”

Test result:

Passed: X

Failed:

III. Tests to be performed after assembly

▪ *Step 1 - Electronics Inventory*

Hardware	LIGO reference	S/N
Coil driver	D0902744	S1000266
		S1000269
Anti Image filter	D070081	S1000250
Anti aliasing filter	D1000269	S1102694
		S1102679
Interface chassis	D1000067	1102223
		1102224
		1102214

Table - Inventory electronics

Acceptance Criteria

- Inventory is complete

Test result: **Passed:** X **Failed:**

▪ *Step 2 - Set up sensors gap*

	Locked, 10 Kg masses at each corners		Locked /no mass		Unlocked /no mass	
Table locked	ADE boxes on		ADE boxes on		ADE boxes on	
Sensors	Offset (Mean)	Std deviation	Offset (Mean)	Std deviation	Offset (Mean)	Std deviation
H1	-300.91	7.44	-179.25	7.54	38.26	15.71
H2	356.80	8.36	358.58	8.14	114.47	13.45
H3	-169.42	8.08	-159.24	9.34	380.66	23.62
V1	-206.09	6.93	-66.94	7.79	-544.90	15.86
V2	-168.09	10.01	38.80	9.72	-463.59	14.48
V3	-41.51	11.80	-36.04	10.08	-55.66	18.79

Capacitive position sensor readout after gap set-up

Acceptance criteria:

- All mean values must be lower than +/-400 cts (a bit less than .0005”).
- All standard deviations below 5 counts.
- No cross talk

Test result: **Passed:** **Failed:** X

Note: Failed because of standard deviation. However, a CPS was set on a test-jig and featured 4.3 counts of standard deviation, which is within specs. Hence, the high standard deviation observed is correlated to the 10Hz-100Hz peaks observed on the locked/unlocked GS13 and CPS ASDs. As shown in *SEI Logbook entry #15*, these peaks are caused by ground motion. Hence, high standard deviations should not be associated with sensor noise.

Note: Vertical CPSs are out of requirement when the ISI is unlocked. This little issue will be solved when the balancing was perfected for the next steps of testing.

▪ **Step 3 - Measure the Sensor gap**

Issues/difficulties/comments regarding this test:

Measured in the previous step. Waived to avoid scratching targets.

Acceptance criteria:

Sensors gap measured on the jig and on the optical table must be:

- 0.080” +/-0.002”

Test result:

Passed:

Failed: X

▪ **Step 4 - Check Sensor gaps after the platform release**

Sensors	Table locked		Table unlocked		Difference
	Mean	Std Deviation	Mean	Std Deviation	
H1	-179.25	7.54	38.26	15.71	217.51
H2	358.58	8.14	114.47	13.45	244.11
H3	-159.24	9.34	380.66	23.62	539.90
V1	-66.94	7.79	-544.90	15.86	477.97
V2	38.80	9.72	-463.59	14.48	502.39
V3	-36.04	10.08	-55.66	18.79	19.62

Table – Sensor gaps after platform release

Acceptance criteria:

- Absolute values of the difference between the unlocked and the locked table must be below:
 - o 1600 cts for horizontal sensors (~0.002”)
 - o 1600 cts for vertical sensors (~0.002”)
- All mean values must be lower than:
 - o 2000 cts for horizontal sensors (~0.0025”)
 - o 2000 cts for vertical sensors (~0.0025”)

Test result:

Passed: X

Failed:

- *Step 5 – Performance of the limiter*
- *Step 5.1 - Test N°1 - Pushing “in the general coordinates”*

Pushing Z,-Z	CPS read out		Calculated after calibration		ROM
	Sensors	UP (Counts)	Down (Counts)	UP (mil)	
V1	19000	-19000	22.4	-22.4	38000
V2	20000	-18000	23.6	-21.3	38000
V3	19500	-20000	23.0	-23.6	39500

Pushing RZ, -RZ	CPS read out		Calculated after calibration		ROM
	Sensors	CCW (+RZ)	CW(-RZ)	CW (mil)	
H1	-22200	22300	-26.2	26.3	44500
H2	-19200	22400	-22.7	26.5	41600
H3	-22000	21200	-26.0	25.0	43200

Table - Optic table range of motion

- *Step 5.2 - Test N°2 – Pushing “locally”*

Pushing Locally	Push in positive direction	Push in negative direction	Railing	Actuator Gap Check	ROM
H1	-23000	24800		X	47800
H2	-21000	24900		X	45900
H3	-26900	23000		X	49900
V1	20400	-19600		X	40000
V2	32200	-32600	X	X	64800
V3	17500	-22000		X	39500

Table - Optic table range of motion

Issues/difficulties encountered during this test:

- Contact points are difficult to check on vertical actuators.
- V3 (pushing locally) appears borderline. However it is not during step 10 which has been performed after perfecting the locker's adjustment.

Acceptance criteria:

- The vertical sensor readout must be positive when the optic table is pushed in the +Z direction
- The horizontal sensor readout must be negative when the optic table is pushed in the +RZ direction
- **Step 5.1**
 - o Absolute value of all estimated motions must be higher than 16000counts (~0.020")
- **Step 5.2**
 - o No contact point on sensors
 - o Absolute value of sensor read out must be higher than 16000counts (~0.020")
 - o No contact point on actuators

Test result:**Passed:** X **Failed:** __ .**▪ Step 6 - Position Sensors unlocked/locked Power Spectra****Scripts files for processing and plotting in SVN at:**`/SeiSVN/seismic/HAM-ISI/Common/Testing_Functions_HAM_ISI/`

- `ASD_Measurements_Locked_Unlocked_HAM_ISI.m`

Data in SVN at:`SeiSVN/seismic/HAM-ISI/X1/HAMX/Data/Spectra/Undamped/`

- `LHO_ISI_UNIT_4_ASD_m_CPS_T240_L4C_GS13_Locked_vs_Unlocked_2012_03_28.mat`

Figures in SVN at:`/SeiSVN/seismic/HAM-ISI/X1/HAMX/Data/Figures/Spectra/Undamped`

- `LHO_ISI_UNIT_4_PSD_m_GS13_Locked_vs_Unlocked_2012_03_28.fig`
- `LHO_ISI_UNIT_4_PSD_m_CPS_Locked_vs_Unlocked_2012_03_28.fig`

Locked/Unlocked Power Spectra are presented below.

LHO HAM-ISI - Unit #4 - 2012 03 28

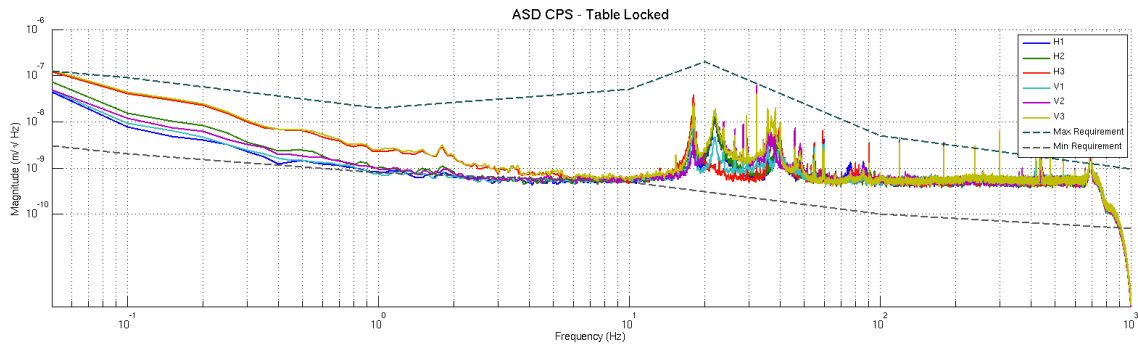
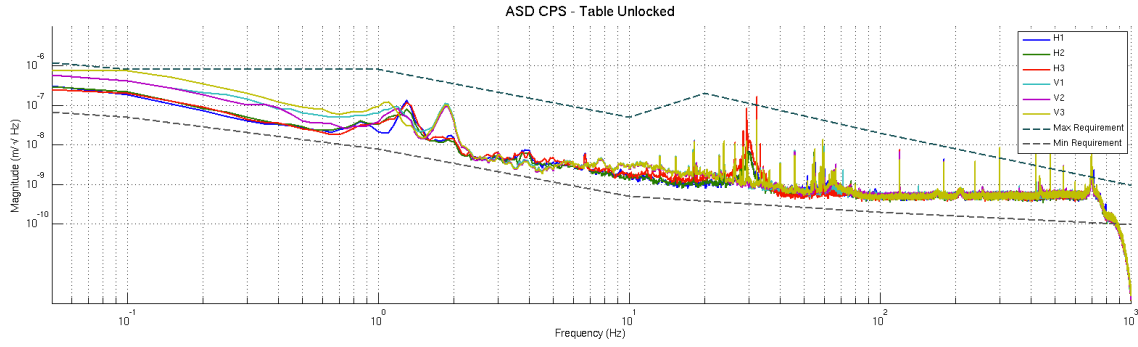


Figure - Calibrated CPS power spectra

LHO HAM-ISI - Unit #4 - 2012 03 28

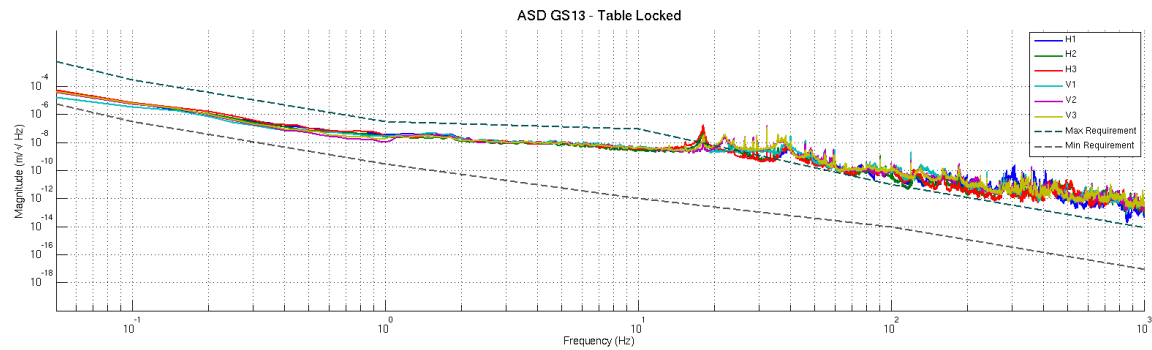
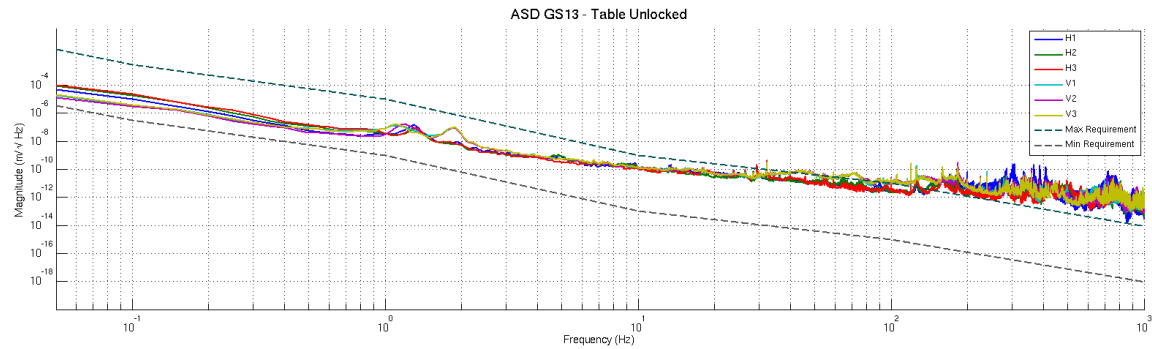


Figure - Calibrated GS13 Power spectra

Issues/difficulties/comments regarding this test:

- 10Hz-100Hz peaks were investigated for the testing phase I of Unit #3 (HAM10), and reported in Part 1, last step: *Capacitive Position Sensor Investigation*, of the related report (Document #E1000312-v3)

Acceptance criteria:

- No cross talk (peaks at low frequencies + harmonics on measurements)
- Magnitudes of power spectra must be between requirement curves

Test result:**Passed:** X **Failed:** **Note:**

When a seismometer fails, its low frequency response is affected. Spectra are within requirements in low frequency. The GS13s installed on this unit are functional.

▪ **Step 7 - GS13 power spectrum -tabled tilted**

Scripts files for processing and plotting in SVN at:

SeiSVN/seismic/HAM-ISI/Common/Testing_Functions_HAM_ISI/
 - ASD_Measurements_Stages_Tilted_HAM_ISI.m

Data in SVN at:

SeiSVN/seismic/HAM-ISI/X1/HAMX/Data/Spectra/Undamped/
 - LHO_ISI_UNIT_4_ASD_m_GS13_Stage_Tilted_2012_03_29.mat

Figures in SVN at:

SeiSVN/seismic/HAM-ISI/X1/HAMX/Data/Figures/Spectra/Undamped
 - LHO_ISI_UNIT_2_m_PSD_GS13_Tilted_2012_03_29.fig

The figure below presents the GS13 power spectrum when the table is unlocked and loaded with a 10Kg mass at each of its corner.

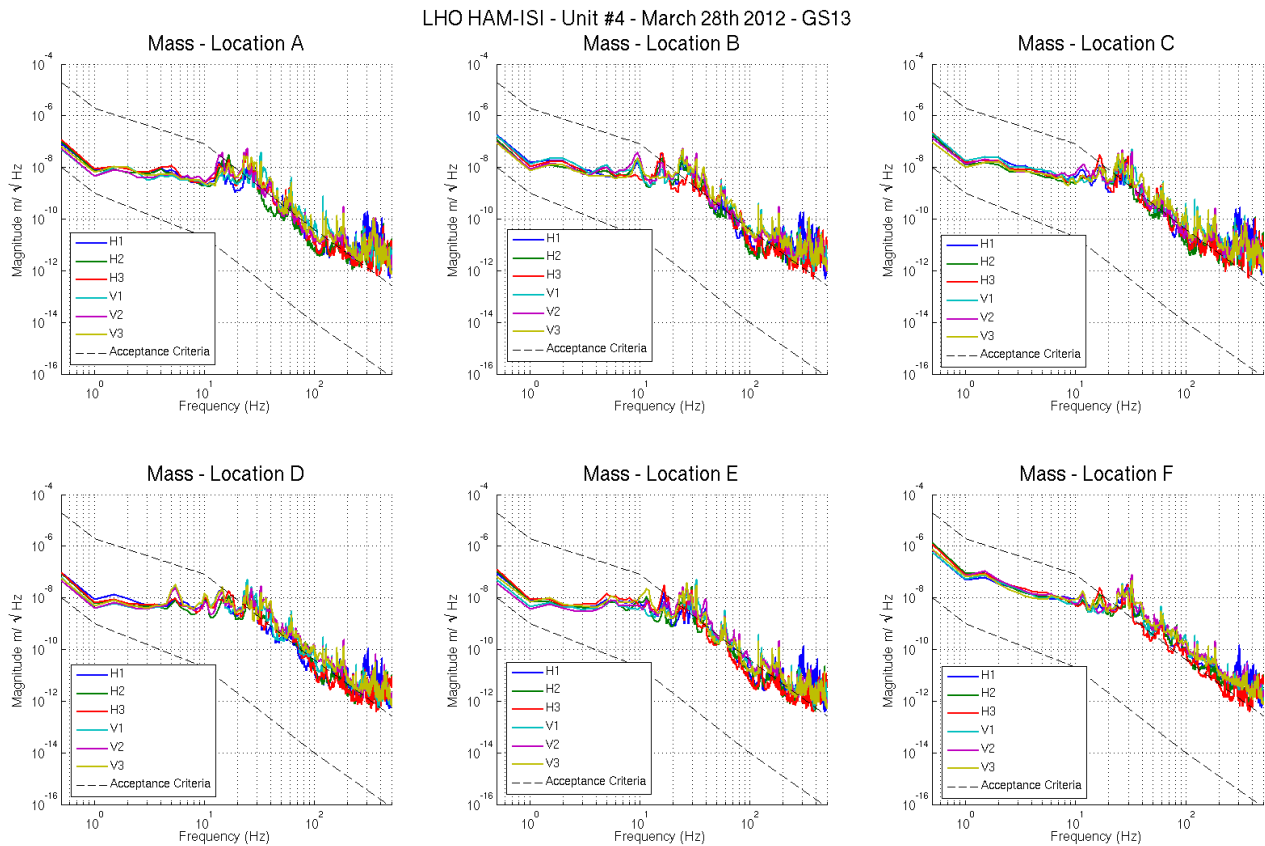


Figure – Power spectrum Calibrated GS13 with mass at corners A to F

Acceptance criteria:

- With table unlocked and tilted, magnitudes of power spectra must be fully included within requirement curves.

Test result:

Passed: X

Failed:

Note:

When a seismometer fails, its low frequency response is affected. Spectra are within requirements in low frequency. The GS13s installed on this unit are functional.

- *Step 8- GS13 pressure readout*

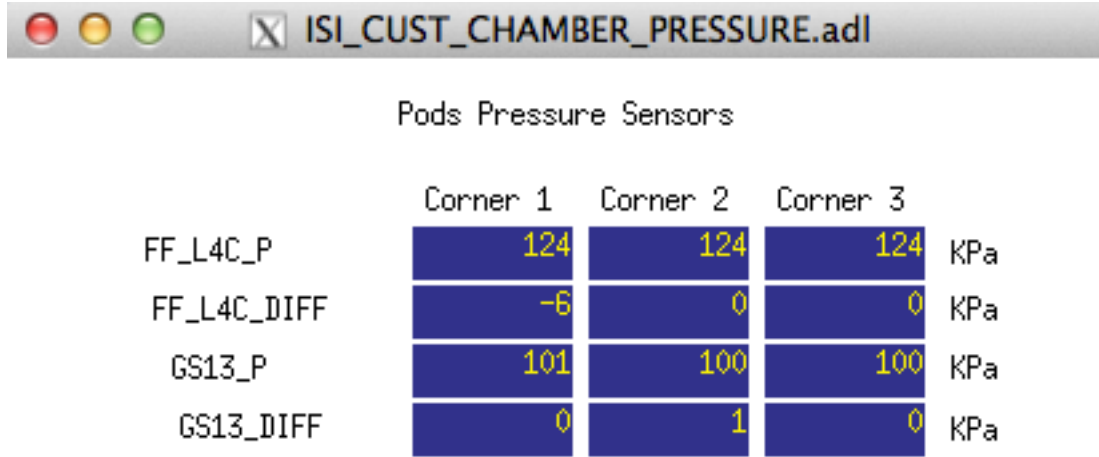


Figure – Pressure Readouts

Acceptance criteria:

- The pressure on *GS13_P* channels must be 102KPa +/-8 KPa (25000 counts +/- 3000 counts)
- *GS13_P* must vary the same way in each corner and *GS13_DIFF* must be constant (channels follow comparable trend)

Test result:

Passed: X

Failed:

Note:

There is no L4C on this Unit. The values read on the FF_L4C_P channels are suspicious. These channels display 30KPa when GS13 interface-chassis are OFF, and 124KPa when GS13 interface chassis are ON.

▪ *Step 9 - Coil Driver, cabling and resistance check*

Actuator	V1		H1		V2	
Coil driver	S1000266 - Coarse 2		S1000266 - Coarse 1		S1000269 - Coarse 2	
Cable #	S1104760		S1104762		S1104773	
Resistance (Ohm)	P1 - P2	P2 - P3	P1 - P2	P2 - P3	P1 - P2	P2 - P3
	O.L (infinity)	6.3	O.L (infinity)	6.4	O.L (infinity)	6.6
MEDM offset (1000 counts)	Measurement P2 (+) ; P1&P3 (-)		Measurement P2 (+) ; P1&P3 (-)		Measurement P2 (+) ; P1&P3 (-)	
	0.3070V		0.3117V		0.3115V	

Actuator	H2		V3		H3	
Coil driver	S1000269 - Coarse 1		S1102692 - Coarse 2		S1102692 - Coarse 1	
Cable #	S1104776		S1104494		S1104493	
Resistance (Ohm)	P1 - P2	P2 - P3	P1 - P2	P2 - P3	P1 - P2	P2 - P3
	O.L (infinity)	6.5	O.L (infinity)	6.7	O.L (infinity)	6.7
MEDM offset (1000 counts)	Measurement P2 (+) ; P1&P3 (-)		Measurement P2 (+) ; P1&P3 (-)		Measurement P2 (+) ; P1&P3 (-)	
	0.3138V		0.3044V		0.3106V	

Table - Actuators resistance check

Issues/difficulties/comments regarding this test:

- Voltages measured from Pin #2 (+) to pin #3 (-) with compensation filters engaged.

Acceptance criteria:

- The measured resistance between the middle pin and one side pin must be 6.5 +/-1 ohms
- Actuator neutral pins must be connected on pin #3 (left side pin of the plug)
- Actuator drive pins must be connected on pin #2 (middle pin of the plug)
- Actuator ground shield pins must be connected on pin #1 (right pin of the plug)
- All LEDs on the coil driver front panel must be green

Test result:

Passed: X

Failed:

▪ *Step 10 - Actuators Sign and range of motion (Local drive)*

	Negative drive	No Drive	Positive drive	ROM (Counts)
H1 readout (count)	-23447	-149	24332	47779
H2 readout (count)	-22527	47	23879	46406
H3 readout (count)	-23930	85	24914	48844
V1 readout (count)	-18733	198	20186	38919
V2 readout (count)	-24586	69	25926	50512
V3 readout (count)	-22314	-93	21033	43347

Table - Range of motion - Local drive

Issues/difficulties/comments regarding this test:

- Compensation filters are ON.

Acceptance criteria:

- Main couplings sensors readout must be at least 16000 counts (~0.02")
- A positive offset drive on one actuator must give positive sensor readout on the collocated sensor. Signs will also be tested when measuring local-to-local transfer functions.

Test result:

Passed: X

Failed:

▪ *Step 11 - Vertical Sensor Calibration*

Lockers	D.I readout with for a negative drive	D.I readout without any drive	D.I readout with for a positive drive
A	-3.10	0.00	3.20
B	-3.10	0.00	3.20
C	-2.90	0.00	3.40
D	-3.00	0.00	3.20
Average	-3.03	0.00	3.25

Sensors	Counts	Counts	Counts	Difference
V1	-2799.40	-8.99	2634.60	5434.00
V2	-2370.80	268.89	2910.80	5281.60
V3	-2106.00	583.66	3112.40	5218.40

Vertical Sensibility	
846.43	Count/mil
0.52	V/mil
30.01	nm/count
0.77	% from ref (840count/mil)

Table - Calibration of capacitive position sensors

Acceptance criteria:

- Deviation from nominal value < 2%. Nominal value is 840 count/mil.

Test result:

Passed: X

Failed:

▪ *Step 12 - Vertical Spring Constant*

Results presented below are obtained after the initial sensors calibration.

Sensors	Mean diff counts	Mean diff m	K (N/m)	Error with average
V1	-7965	-2.405E-04	83243	0.03%
V2	-7825	-2.363E-04	84733	1.82%
V3	-8118	-2.451E-04	81680	-1.85%
Average (N/m)			249657	

1.06 % variation from nominal

Table - Vertical spring constant

Acceptance criteria:

- +/-2 % of 2.4704e5 N/m (i.e. between 2.421e5 and 2.520e5 N/m)
- +/- 5% of variation between each spring and the average

Test result:

Passed: X

Failed:

▪ *Step 13 - Static Testing (Tests in the local basis)*

	Sensors (counts)					
	H1	H2	H3	V1	V2	V3
H1	2055	1248	1239	66	-42	51
H2	1272	1981	1204	52	-62	27
H3	1266	1211	1968	63	-63	17
V1	205	190	-362	1462	-43	-615
V2	-390	147	130	-568	1397	5
V3	200	-361	216	-48	-626	1456

Table - Main couplings and cross couplings

Acceptance criteria:

- **Vertical**
For a +1000 count offset drive on vertical actuators
 - o Collocated sensors must be 1400 counts +/- 10%
- **Horizontal**
For a +1000 count offset drive on horizontal actuators
 - o Collocated sensors must be 2000 counts +/- 10%
 - o Non-collocated horizontal sensors must be 1250 counts +/-10%

Test result:

Passed: X

Failed:

▪ *Step 14 - Linearity test*

	Slope	Offset	Average slope	Variation from average(%)
H1	2.0644	-85.0814	2.04	1.19
H2	2.0238	146.6449		-0.80
H3	2.0321	202.2433		-0.39
V1	1.472	-171.4327	1.46	1.10
V2	1.4417	-163.3527		-0.98
V3	1.4542	-373.6469		-0.12

Table - Slopes and offset of the triplet ‘Actuators - HAM-ISI – Sensors’

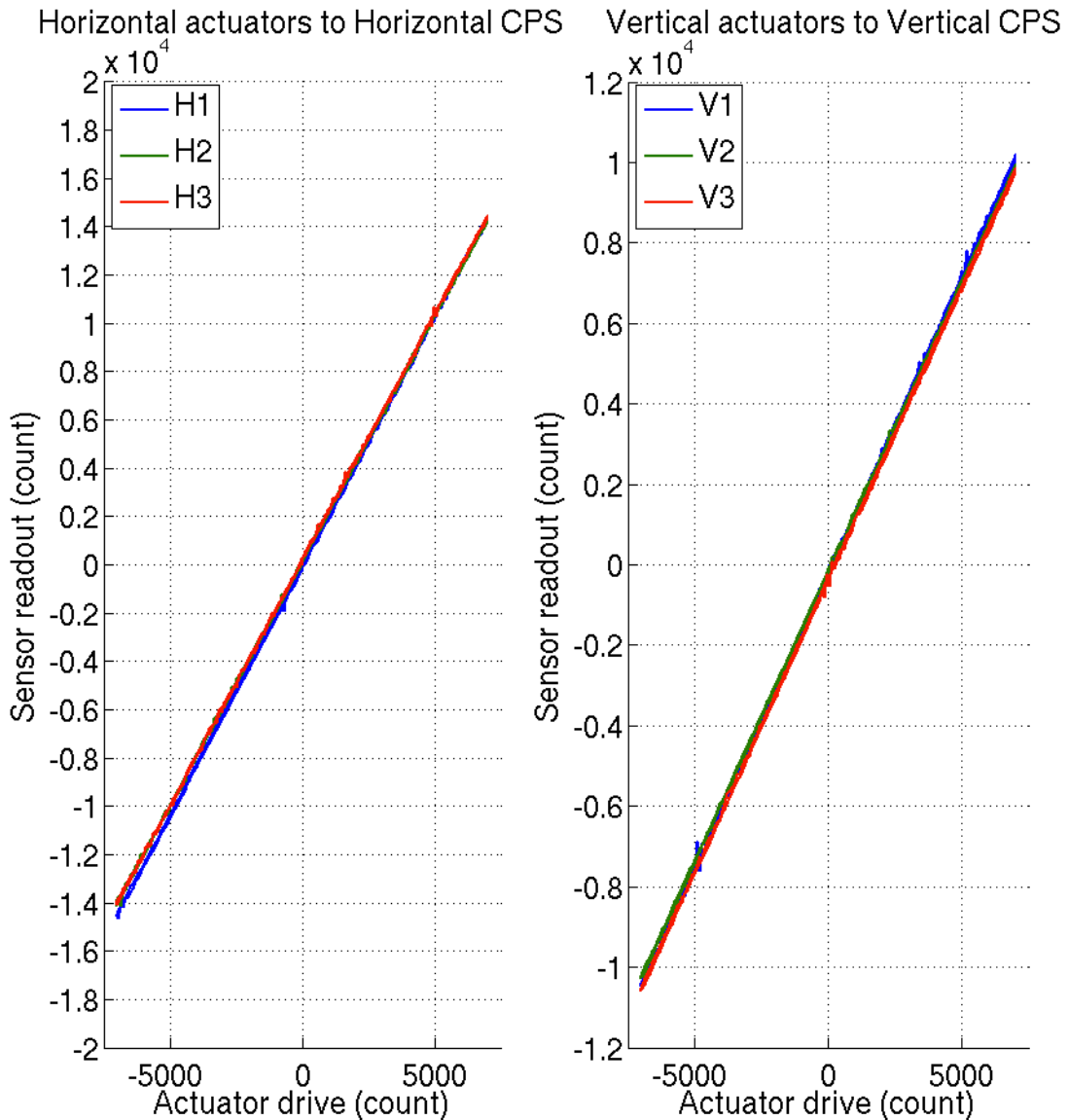


Figure - Linearity test on the triplet ‘actuators - HAM-ISI – sensors’ in both Horizontal and vertical directions

Issues/difficulties encountered during this test:

- H1, V1 do not meet our requirements.
- The tendencies on linearity test slopes seem to match the tendencies on cable resistance (coildriver to feedthrough section). Cable resistance, which is proportional to cable length, would then be a possible explanation for the linearity results obtained.

Acceptance criteria:

- Horizontal and vertical slopes of the triplet actuators x HAM-ISI x sensors: Average slope +/- 1%

Test result:**Passed:** ____**Failed:** X **Note:** we will check that these values are within tolerance when we'll use the final field cables.

▪ *Step 15 - Cartesian Basis Static Testing*

1000 counts Drive	H1	H2	H3	V1	V2	V3	Direction read out
X Drive	293.13	286.81	-454.26	-44.001	6.366	-0.96136	502.32
Y Drive	-456.74	431	-15.092	-17.144	-5.8459	-0.18086	496.37
Z Drive	7.0322	25.939	29.914	232.42	282.87	257.66	250.97
Rx Drive	-463.14	467.37	2.3234	-482.97	1649.4	-1198.8	2552.3
Ry Drive	-280.17	-243.86	550.78	-1719.1	427.7	1251.1	2640.8
Rz Drive	-1965.6	-1916.4	-1897.3	-47.795	16.935	-8.6248	2451.7

1000 counts Drive	H1	H2	H3	V1	V2	V3	Direction read out
X Drive	+	+	-				+
Y Drive	-	+	0				+
Z Drive				+	+	+	+
Rx Drive				-	+	-	+
Ry Drive				-	+	+	+
Rz Drive	-	-	-				+

1000 counts Drive	X	Y	Z	RX	RY	RZ	Direction read out
X Drive	502.32	-8.1547	-15.395	36.39	36.015	-35.356	502.32
Y Drive	-5.7376	496.37	-2.4892	-9.5645	8.2132	14.818	496.37
Z Drive	-8.1221	-12.01	250.97	26.351	20.255	-23.686	250.97
Rx Drive	5.5059	1.4196	-13.343	2552.3	-0.24508	-0.63228	2552.3
Ry Drive	-3.8015	8.1816	-15.553	35.745	2640.8	-21.571	2640.8
Rz Drive	-15.569	11.632	-20.424	60.594	60.551	2451.7	2451.7

Table – Cartesian static testing reference table

Acceptance criteria:

For a positive drive in the Cartesian basis:

- Local sensor readout must have the same sign that the reference table
- Cartesian sensors read out must be positive in the drive direction

Test result:

Passed: X **Failed:**

- *Step 16- Frequency response*
- *Step 16.1 - Local to local measurements*

FREQ. RANGE		Freq. Res. (Hz)	DRIVE		MEAS. TIME		
Min	Max		H	V	Time for 1 Rep. (s)	Number of Reps	Time (min)
0.01	0.1	0.01	10500	10500	620.0	4	41.3
0.1	0.5	0.02	600	600	320.0	8	42.7
0.5	5	0.025	35	35	260.0	16	69.3
5	200	0.1	300	300	80.0	40	53.3
200	1000	0.2	135	135	50.0	90	75.0
Total Meas. Time(h)							4.7

Table – Transfer function settings, by frequency band

Data files in SVN at:

- /SeiSVN/seismic/HAM-ISI/X1/HAMX/Data/Transfer_Functions/Measurements/Undamped/
- LHO_ISI_HAM_Unit_4_Data_TF_L2L_10mHz_100mHz_20120404-004535.mat
 - LHO_ISI_HAM_Unit_4_Data_TF_L2L_100mHz_500mHz_20120403-220357.mat
 - LHO_ISI_HAM_Unit_4_Data_TF_L2L_500mHz_5Hz_20120403-181422.mat
 - LHO_ISI_HAM_Unit_4_Data_TF_L2L_5Hz_200Hz_20120403-172049.mat
 - LHO_ISI_HAM_Unit_4_Data_TF_L2L_200Hz_1000Hz_20120403-160314.mat

Data collection script files:

- /SeiSVN/seismic/HAM-ISI/Common//Transfer_Function_Scripts/
- Run_TF_L2L_10mHz_100mHz.m
 - Run_TF_L2L_100mHz_500mHz.m
 - Run_TF_L2L_500mHz_5Hz.m
 - Run_TF_L2L_5Hz_100Hz.m
 - Run_TF_L2L_100Hz_1000Hz.m

Scripts files for processing and plotting in SVN at:

- /SeiSVN/seismic/HAM-ISI/X1/HAMX/Scripts/Control_Scripts/
- Step_1_TF_Loc_to_Loc_X1_ISI_HAMX

Figures in SVN at:

- /SeiSVN/seismic/HAM-ISI/X1/HAMX/Data/Figures/Transfer_Functions/Measurements/Undamped/
- X1_ISI_HAMX_TF_L2L_Raw_from_ACT_to_GS13_2012_04_04.fig
 - X1_ISI_HAMX_TF_L2L_Raw_from_ACT_to_CPS_2012_04_04.fig

Storage of measured transfer functions in the SVN at:

- /SeiSVN/seismic/HAM-ISI/X1/HAMX/Data/Transfer_functions/Simulations/Undamped/
- LHO_ISI_Unit_2_TF_L2L_Raw_2012_03_10.mat

The local-to-local transfer functions are presented below.

HAM-ISI - LHO - Unit #4 - April 4th 2012 - On test stand, In air - Overnight Measurement

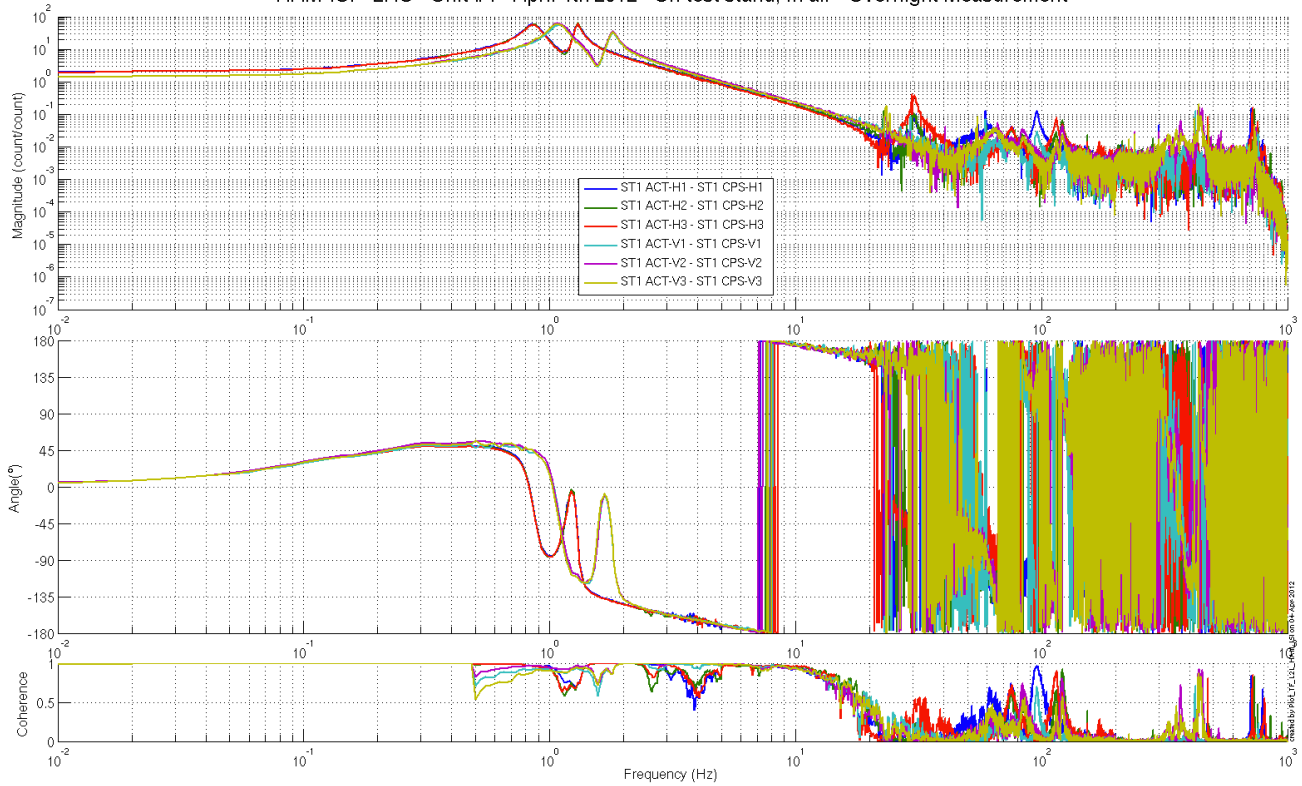


Figure - local-to-Local Measurements – Capacitive sensors

HAM-ISI - LHO - Unit #4 - April 4th 2012 - On test stand, In air - Overnight Measurement

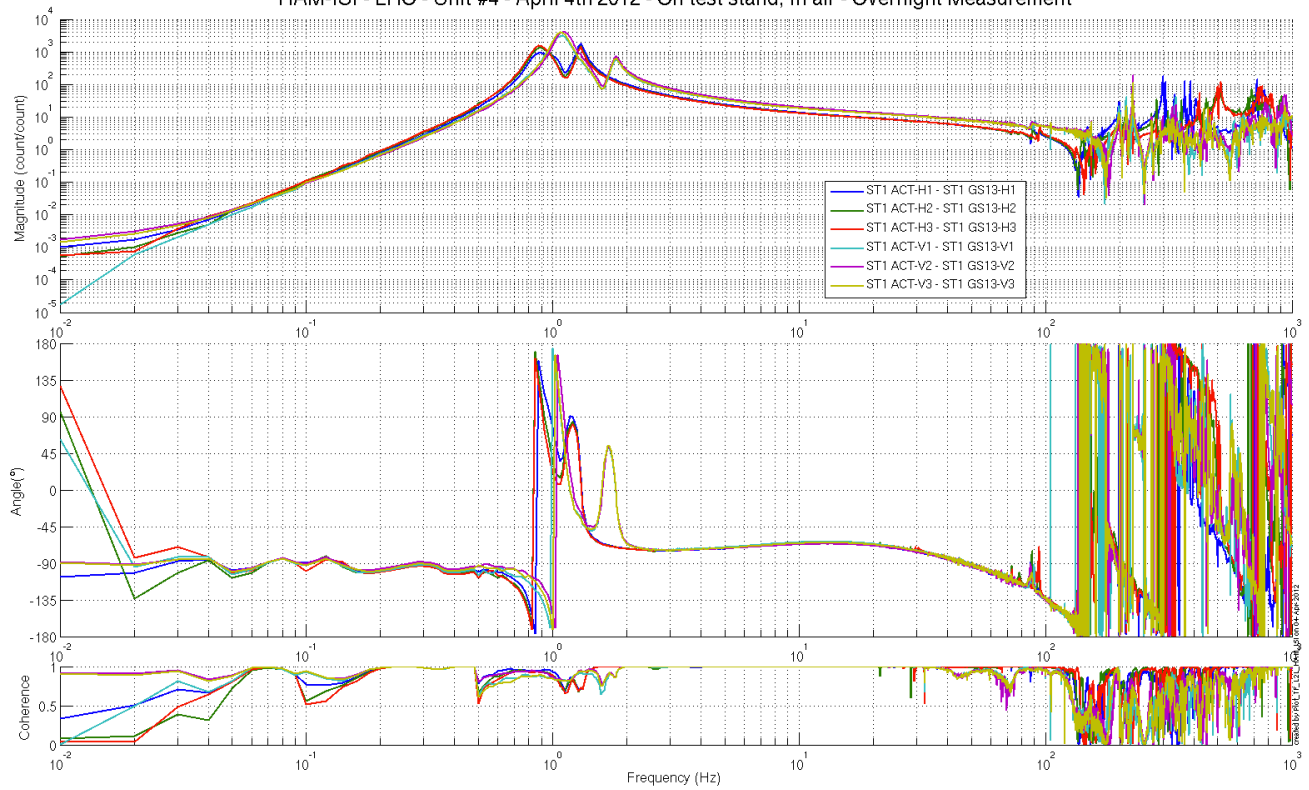


Figure - local-to-Local Measurements – Inertial sensors

▪ **Step 16.2 - Cartesian to Cartesian measurements**

Scripts files for processing and plotting in SVN at:

/SeiSVN/seismic/HAM-ISI/X1/HAMX/Scripts/Control_Scripts/
 - Step_3_TF_Cart_to_Cart_M1_ISI_HAMX.m

Figures in SVN at:

/SeiSVN/seismic/HAM-ISI/X1/HAMX/Data/ Figures/Transfer_Functions/Simulations/Undamped/
 - X1_ISI_HAMX_TF_C2C_Symmetrized_from_ACT_to_CPS_2012_04_04.fig
 - X1_ISI_HAMX_TF_C2C_Symmetrized_from_ACT_to_GS13_2012_04_04.fig

Storage of measured transfer functions in the SVN at:

/SeiSVN/seismic/HAM-ISI/X1/HAMX/Data/Transfer_functions/Simulations/Undamped/
 - X1_ISI_HAMX_TF_C2C_Raw_2012_04_04.mat
 -

The Cartesian to Cartesian transfer functions are presented below:

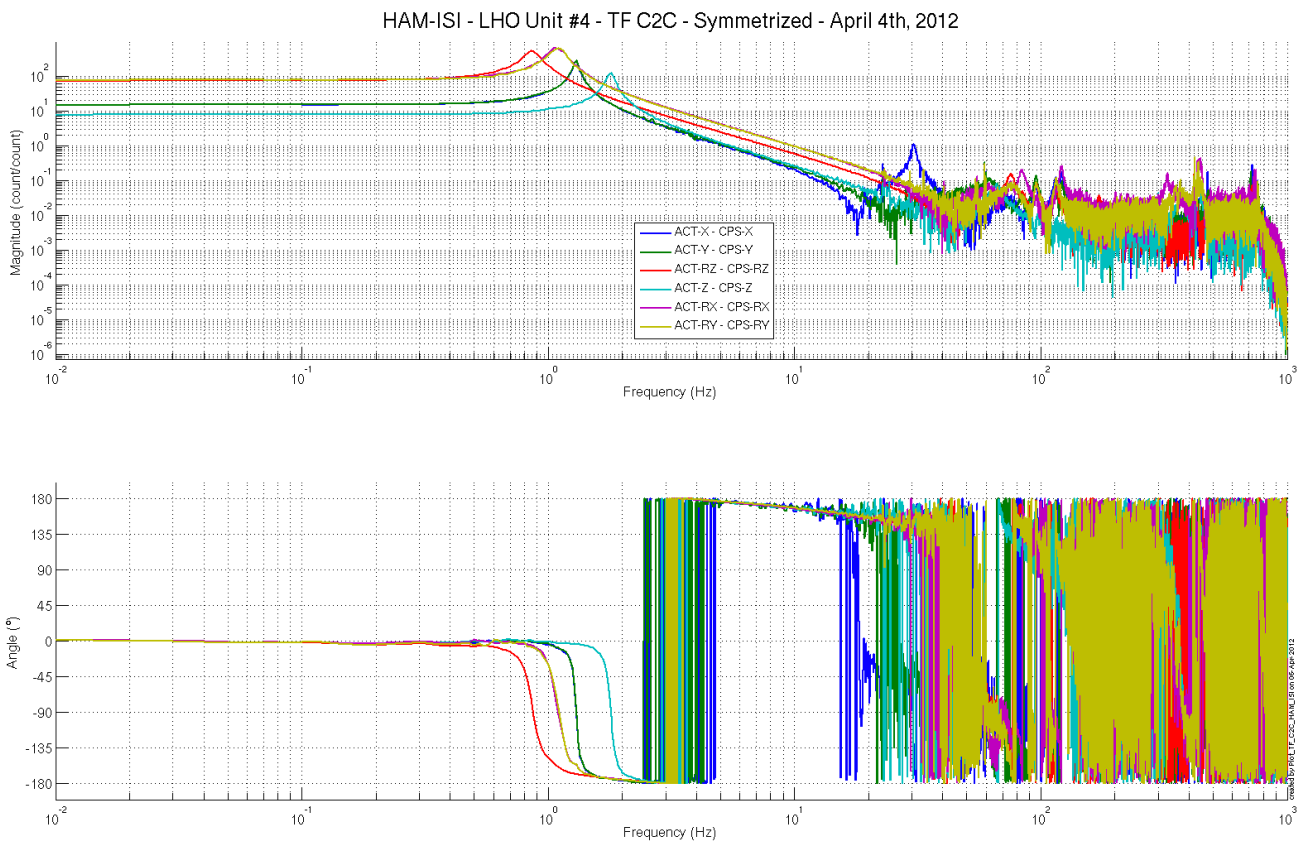


Figure – Cartesian to Cartesian Measurements – Capacitive sensors

HAM-ISI - LHO Unit #4 - TF C2C - Symmetrized - April 4th, 2012

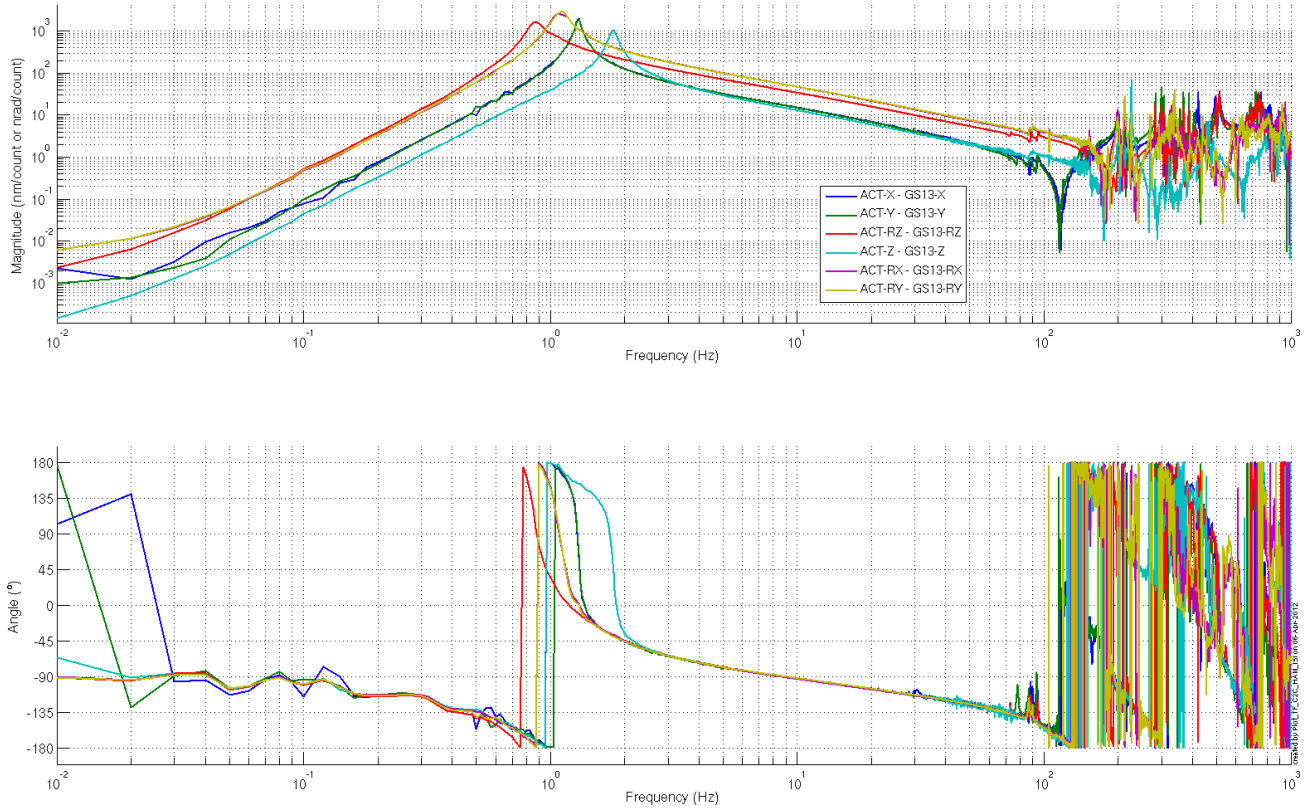


Figure – Cartesian to Cartesian Measurements – Inertial sensors

Acceptance criteria:

- Local to local measurements
 - o On CPS, the phase must be 0° at DC
 - o On Geophones, the phase must be -90° at DC
 - o Identical shape in each corner
- Cartesian to Cartesian measurements
 - o On CPS, the phase must be 0° at DC
 - o On Geophones, the phase must be -90° at DC
 - o Identical shape X/Y and RX/RY

Test result:

Passed: X

Failed:

- *Step 17 - Transfer function comparison with Reference*
- *Step 17.1 - Local to local - Comparison with Reference*

Scripts files for processing and plotting in SVN at:

/SeiSVN/seismic/HAM-ISI/X1/HAMX/Scripts/Control_Scripts/

- Step_1_Plot_TF_L2L_HAM_Testing.m

/SeiSVN/seismic/HAM-ISI/Common/Testing_Functions_HAM_ISI/

- Step_1_TF_Loc_to_Loc_X1_ISI_HAMX

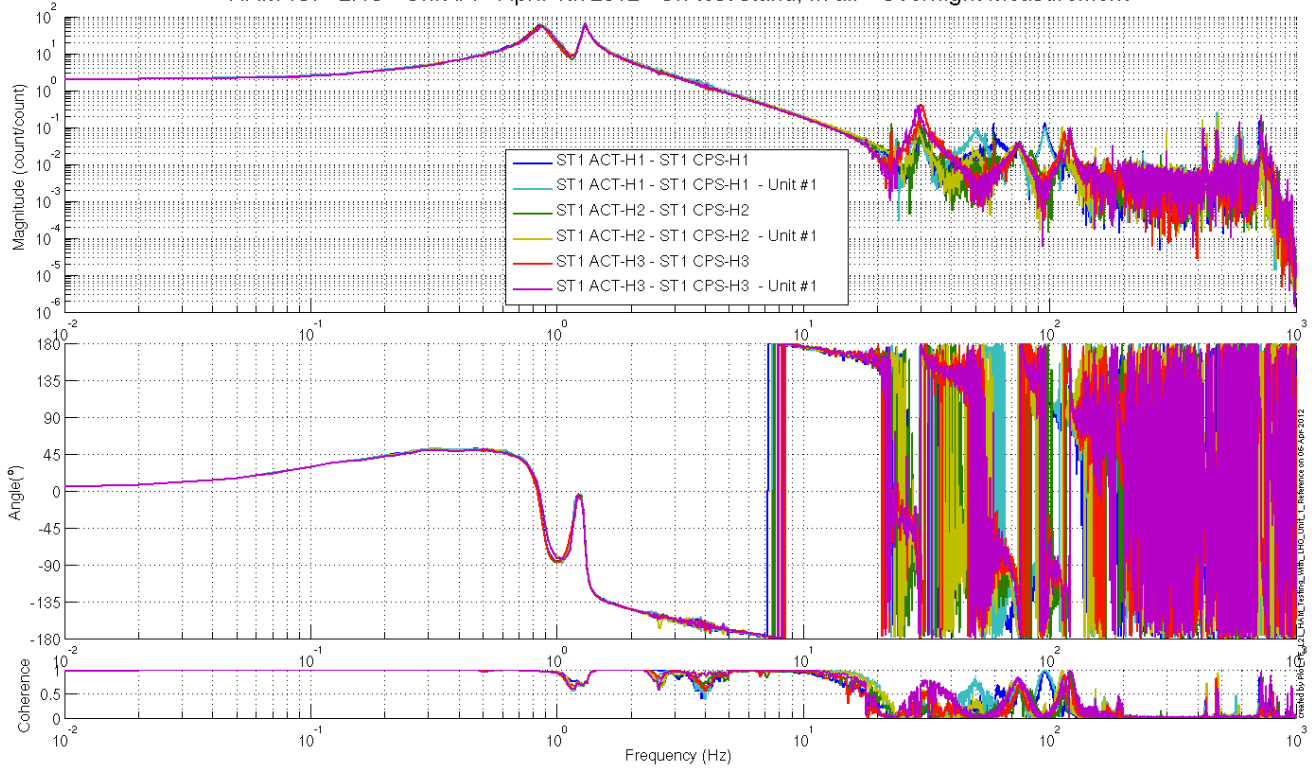
Local to local figures in SVN at:

/SeiSVN/seismic/HAM-ISI/X1/HAMX/Data/

Figures/Transfer_Functions/Measurements/Comparisons/L2L/

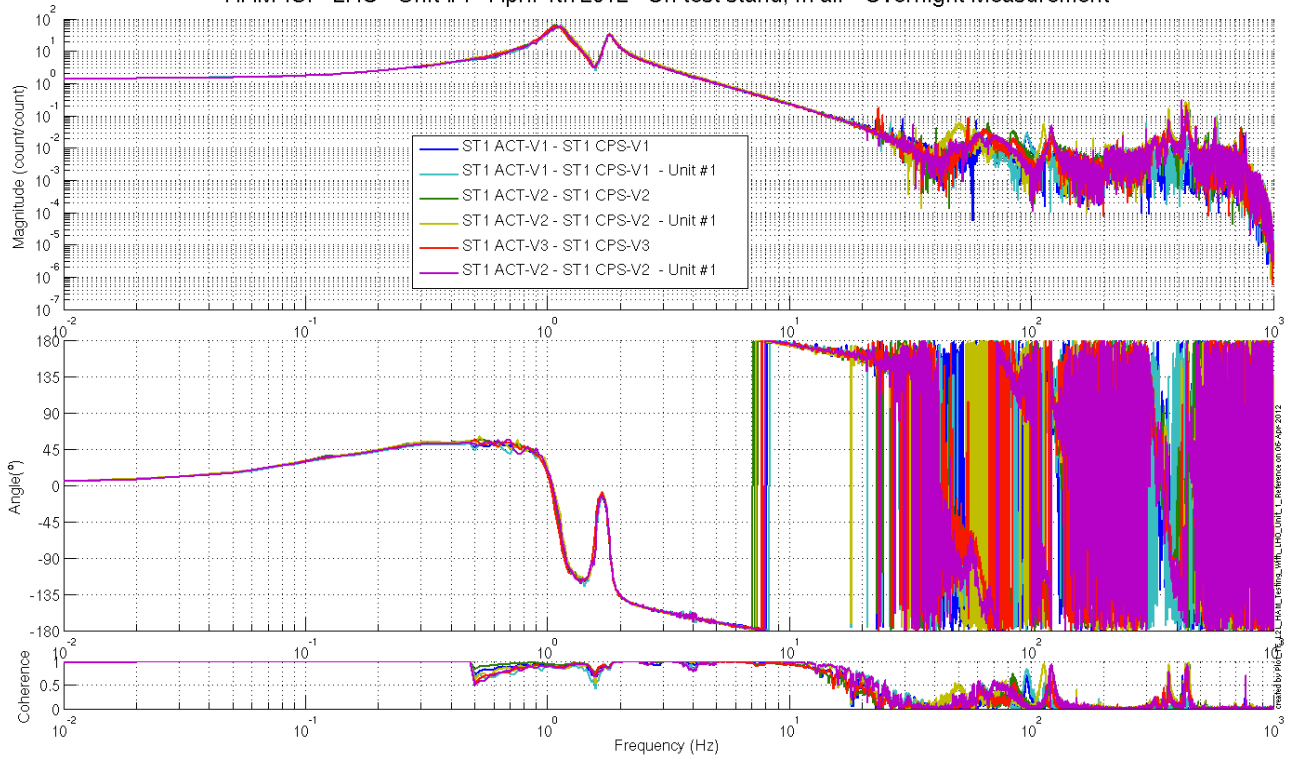
- X1_ISI_HAMX_TF_L2L_Raw_from_ACT_H_to_CPS_H_vs_UNIT_1_2012_02_02_With_3_Washers_Under_Top_Mass.fig
- X1_ISI_HAMX_TF_L2L_Raw_from_ACT_H_to_CPS_H_vs_UNIT_1_2012_02_02_With_3_Washers_Under_Top_Mass.pdf
- X1_ISI_HAMX_TF_L2L_Raw_from_ACT_H_to_GS13_H_vs_UNIT_1_2012_02_02_With_3_Washers_Under_Top_Mass.fig
- X1_ISI_HAMX_TF_L2L_Raw_from_ACT_H_to_GS13_H_vs_UNIT_1_2012_02_02_With_3_Washers_Under_Top_Mass.pdf
- X1_ISI_HAMX_TF_L2L_Raw_from_ACT_V_to_CPS_V_vs_UNIT_1_2012_02_02_With_3_Washers_Under_Top_Mass.fig
- X1_ISI_HAMX_TF_L2L_Raw_from_ACT_V_to_CPS_V_vs_UNIT_1_2012_02_02_With_3_Washers_Under_Top_Mass.pdf

HAM-ISI - LHO - Unit #4 - April 4th 2012 - On test stand, In air - Overnight Measurement



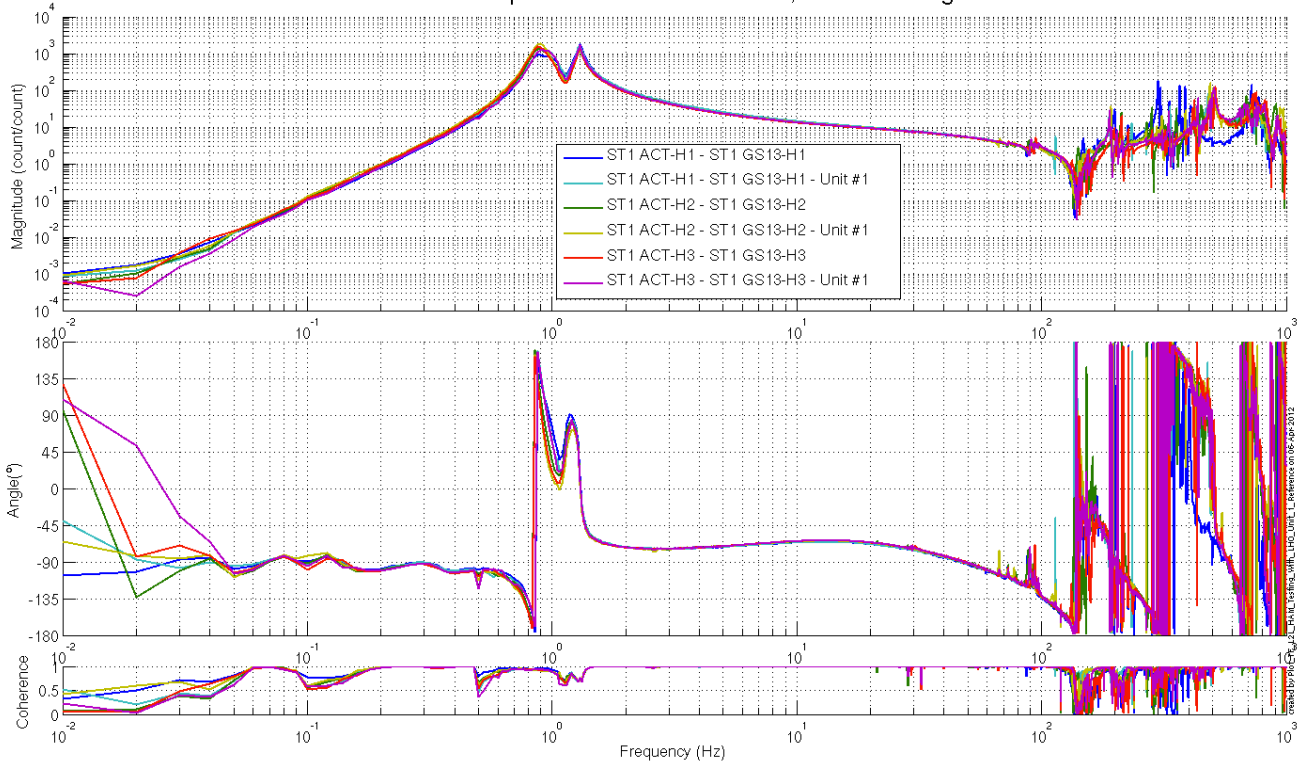
**Figure – local-to-Local measurements, comparison with Unit #1 reference
Capacitive Position Sensors - Horizontal motion**

HAM-ISI - LHO - Unit #4 - April 4th 2012 - On test stand, In air - Overnight Measurement



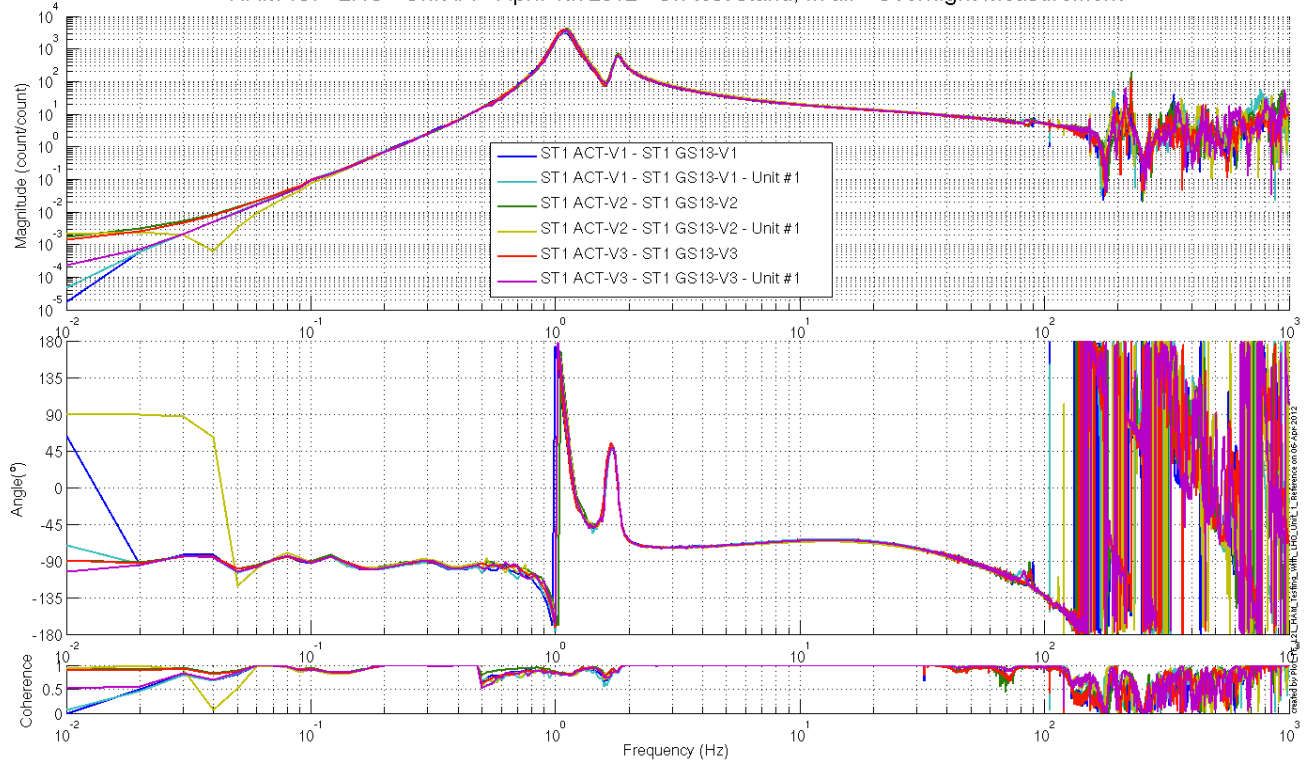
**Figure – local-to-Local measurements, comparison with Unit #1 reference
Capacitive Position Sensors - Vertical motion**

HAM-ISI - LHO - Unit #4 - April 4th 2012 - On test stand, In air - Overnight Measurement



**Figure – local-to-Local measurements, comparison with Unit #1 reference
Inertial Sensors - Horizontal motion**

HAM-ISI - LHO - Unit #4 - April 4th 2012 - On test stand, In air - Overnight Measurement



**Figure – local-to-Local measurements, comparison with Unit #1 reference
Inertial Sensors - Vertical motion**

▪ *Step 17.2 - Cartesian to Cartesian - Comparison with Reference*

Scripts files for processing and plotting in SVN at:

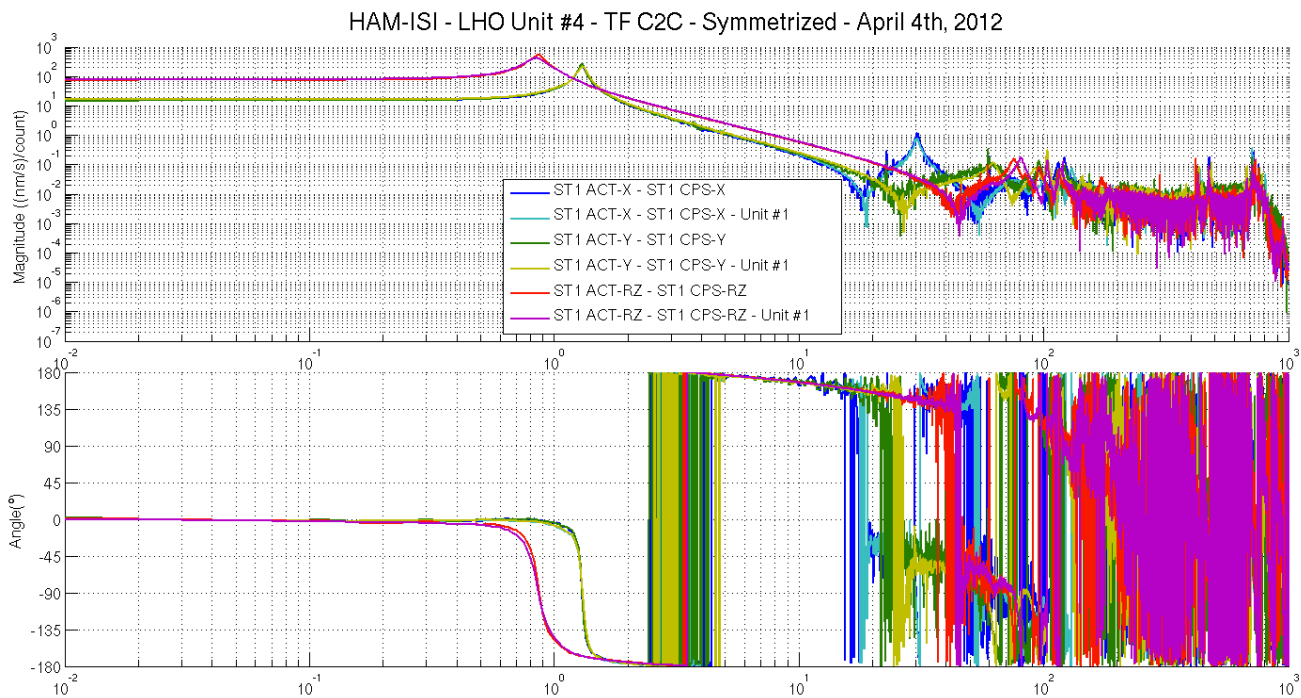
- /SeiSVN/seismic/HAM-ISI/X1/HAMX/Scripts/Control_Scripts/
- Step_3_TF_Cart_to_Cart_M1_ISI_HAMX.m
- /SeiSVN/seismic/HAM-ISI/Common/Testing_Functions_HAM_ISI/
- Plot_TF_C2C_HAM_Testing_With_LHO_Unit_1_Reference.m

Cartesian to Cartesian figures in SVN at:

/SeiSVN/seismic/HAM-ISI/X1/HAMX/Data/

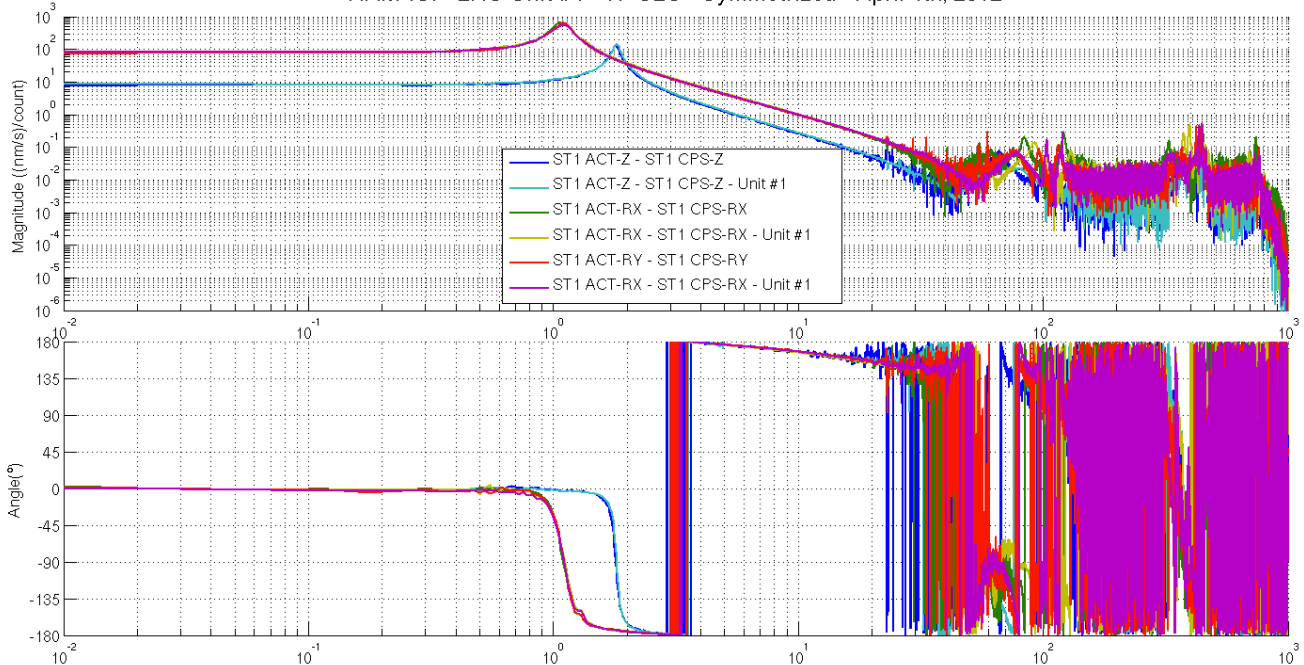
Figures/Transfer_Functions/Measurements/Comparisons/C2C/

- X1_ISI_HAMX_TF_C2C_Raw_from_ACT_H_to_CPS_H_Symmetrized_vs_Unit_1_2012_04_04.fig
- X1_ISI_HAMX_TF_C2C_Raw_from_ACT_V_to_CPS_V_Symmetrized_vs_Unit_1_2012_04_04.fig
- X1_ISI_HAMX_TF_C2C_Raw_from_ACT_H_to_GS13_H_Symmetrized_vs_Unit_1_2012_04_04.fig
- X1_ISI_HAMX_TF_C2C_Raw_from_ACT_V_to_GS13_V_Symmetrized_vs_Unit_1_2012_04_04.fig



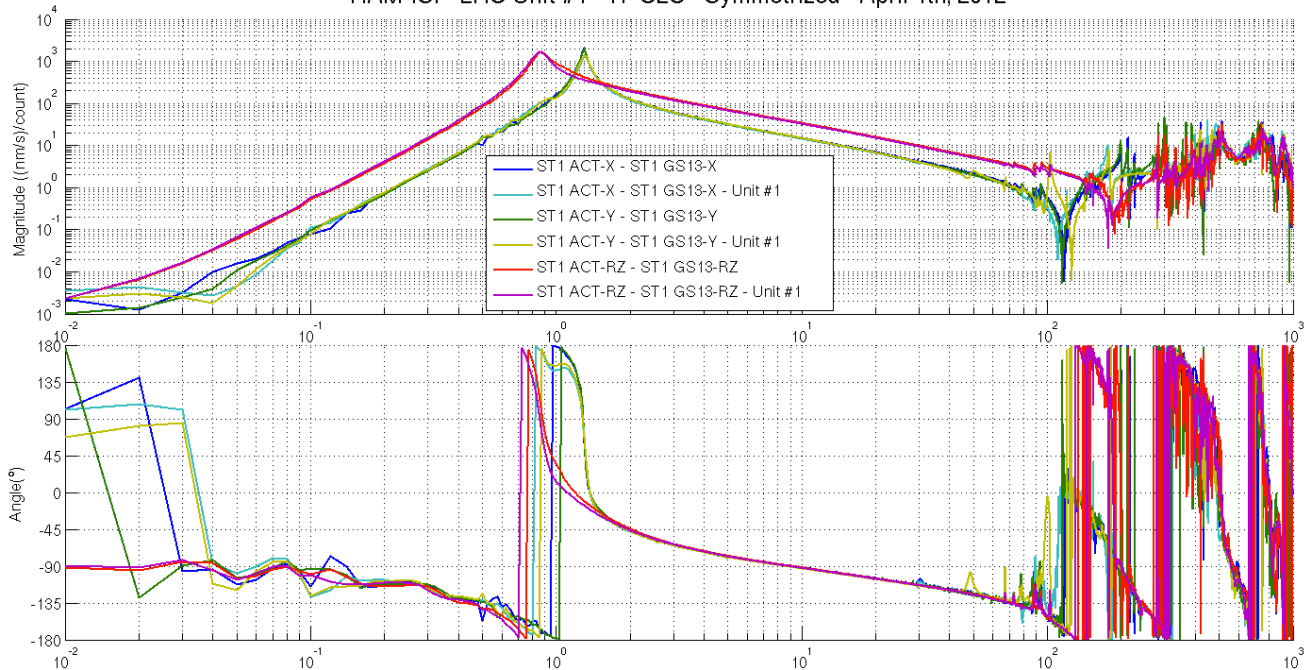
**Figure – Cartesian to Cartesian measurements, comparison with Unit #1 reference
Capacitive Position Sensors - Horizontal motion**

HAM-ISI - LHO Unit #4 - TF C2C - Symmetrized - April 4th, 2012

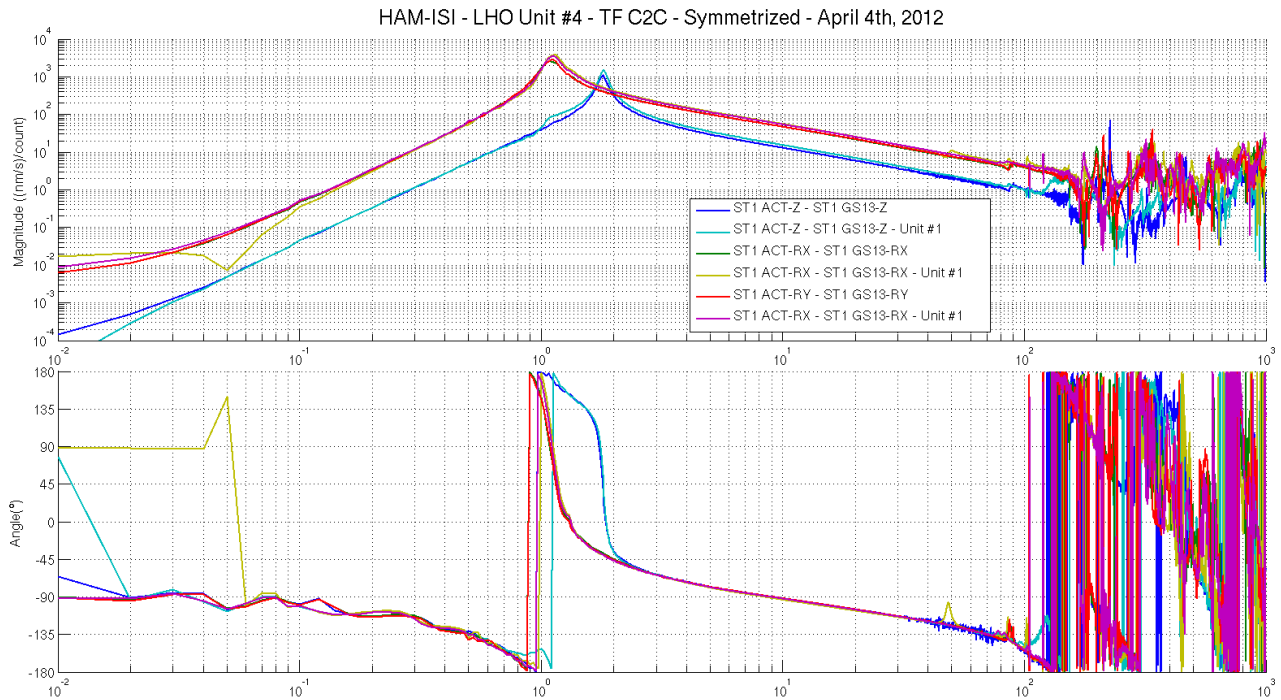


**Figure – Cartesian to Cartesian measurements, comparison with Unit #1 reference
Capacitive Position Sensors - Vertical motion**

HAM-ISI - LHO Unit #4 - TF C2C - Symmetrized - April 4th, 2012



**Figure – Cartesian to Cartesian measurements, comparison with Unit #1 reference – Inertial Sensors
Horizontal motion**



**Figure – Cartesian to Cartesian measurements, comparison with Unit #1 reference
Inertial Sensors - Vertical motion**

Issues/difficulties encountered during this test:

Unit #4's Cartesian-TFs were simulated. Coherence is not available.

Acceptance criteria:

- No difference with the reference transfer functions (SVN)
 - o Phase – less than 10° - In Phase – Out of Phase
 - o Damping (fit by eye with Reference transfer functions)
 - o DC gain
 - o Eigen frequencies shift less than 10%

Test result:

Passed: X

Failed:

▪ *Step 18 - Lower Zero Moment Plane*

Data collection script files:

/SeiSVN/seismic/HAM-ISI/Common/Transfer_Function_Scripts/
 - Run_TF_C2C_10mHz_100mHz_LZMP_HAM_ISI.m

Data files in SVN at:

/SeiSVN/seismic/HAM-ISI/X1/HAMX/Data/Transfer_Functions/Measurements/Undamped/
 - LHO_ISI_HAM_Unit_4_Data_TF_C2C_10mHz_100mHz_LZMP_20120404-160818.mat

Scripts files for processing and plotting in SVN at:

/SeiSVN/seismic/HAM-ISI/Common/Testing_Functions_HAM_ISI/
 - LZMP_HAM_ISI.m

Figures in SVN at:

/SeiSVN/seismic/HAM-ISI/X1/HAMX/Data/Figures/Transfer_Functions/Measurements/Undamped/
 - LHO_ISI_UNIT_2_LZMP_20120404.fig

The result of the measurement performed is presented below.

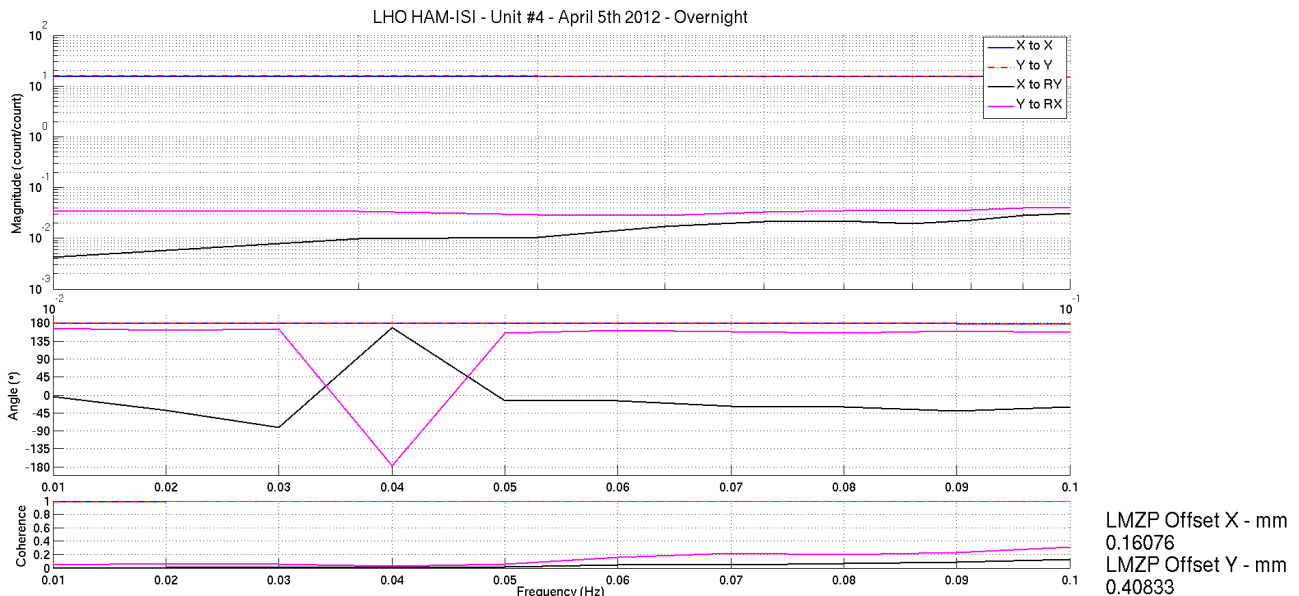


Figure - Lower Zero Moment Plane – Main and cross couplings at low frequency

Acceptance criteria:

- X offset must be less than 2 mm
- Y offset must be less than 2 mm

Test result:

Passed: X **Failed:**

Note: Coherence is low on that measurement. More averages were needed.

- **Step 19 - Damping loops**

In this step, HAM6 damping loops are implemented. First, damping performances are evaluated in simulation. Second, Damping loops are implemented and performance is experimentally measured.

- **Step 19.1 - Transfer functions - Simulation**

Continuous HAM6 filters are located in the SVN at:

/SeiSVN/seismic/HAM-ISI/Common/HAM6_Main_Results/

- HAM6_LLO_Damping_Filters.mat

Scripts files used to evaluate damping loops performance from measurements are located in SVN at:

/SeiSVN/seismic/HAM-ISI/X1/HAMX/Scripts/Control_Scripts/

- Step_4_Damping_Filters_X1_ISI_HAMX.m

TF Data file is located in the SVN at:

/seismic/HAM-ISI/X2/Data/Unit_2/Transfer_Functions/Simulations/Damping/

- X1_ISI_HAMX_TF_C2C_Damped_2012_04_04.mat

Figures in SVN at:

/SeiSVN/seismic/HAM-ISI/X1/HAMX/Data/Figures/Transfer_Functions/Simulations/Damped/

- X1_ISI_HAMX_Damping_TF_MIMO_ST1_ACT_RX_to_ST1_GS13_RX_2012_04_04.fig
- X1_ISI_HAMX_Damping_TF_MIMO_ST1_ACT_Y_to_ST1_GS13_Y_2012_04_04.fig
- X1_ISI_HAMX_TF_Damped_SISO_ACT_RZ_to_GS13_RZ_2012_04_04.fig
- X1_ISI_HAMX_Damping_TF_MIMO_ST1_ACT_RX_to_ST1_GS13_RX_2012_04_04.pdf
- X1_ISI_HAMX_Damping_TF_MIMO_ST1_ACT_RY_to_ST1_GS13_RY_2012_04_04.fig
- X1_ISI_HAMX_Damping_TF_MIMO_ST1_ACT_Z_to_ST1_GS13_Z_2012_04_04.fig
- X1_ISI_HAMX_TF_Damped_SISO_ACT_X_to_GS13_X_2012_04_04.fig
- X1_ISI_HAMX_Damping_TF_MIMO_ST1_ACT_RZ_to_ST1_GS13_RZ_2012_04_04.fig
- X1_ISI_HAMX_TF_Damped_SISO_ACT_RX_to_GS13_RX_2012_04_04.fig
- X1_ISI_HAMX_TF_Damped_SISO_ACT_Y_to_GS13_Y_2012_04_04.fig
- X1_ISI_HAMX_Damping_TF_MIMO_ST1_ACT_X_to_ST1_GS13_X_2012_04_04.fig
- X1_ISI_HAMX_TF_Damped_SISO_ACT_RY_to_GS13_RY_2012_04_04.fig
- X1_ISI_HAMX_TF_Damped_SISO_ACT_Z_to_GS13_Z_2012_04_04.fig

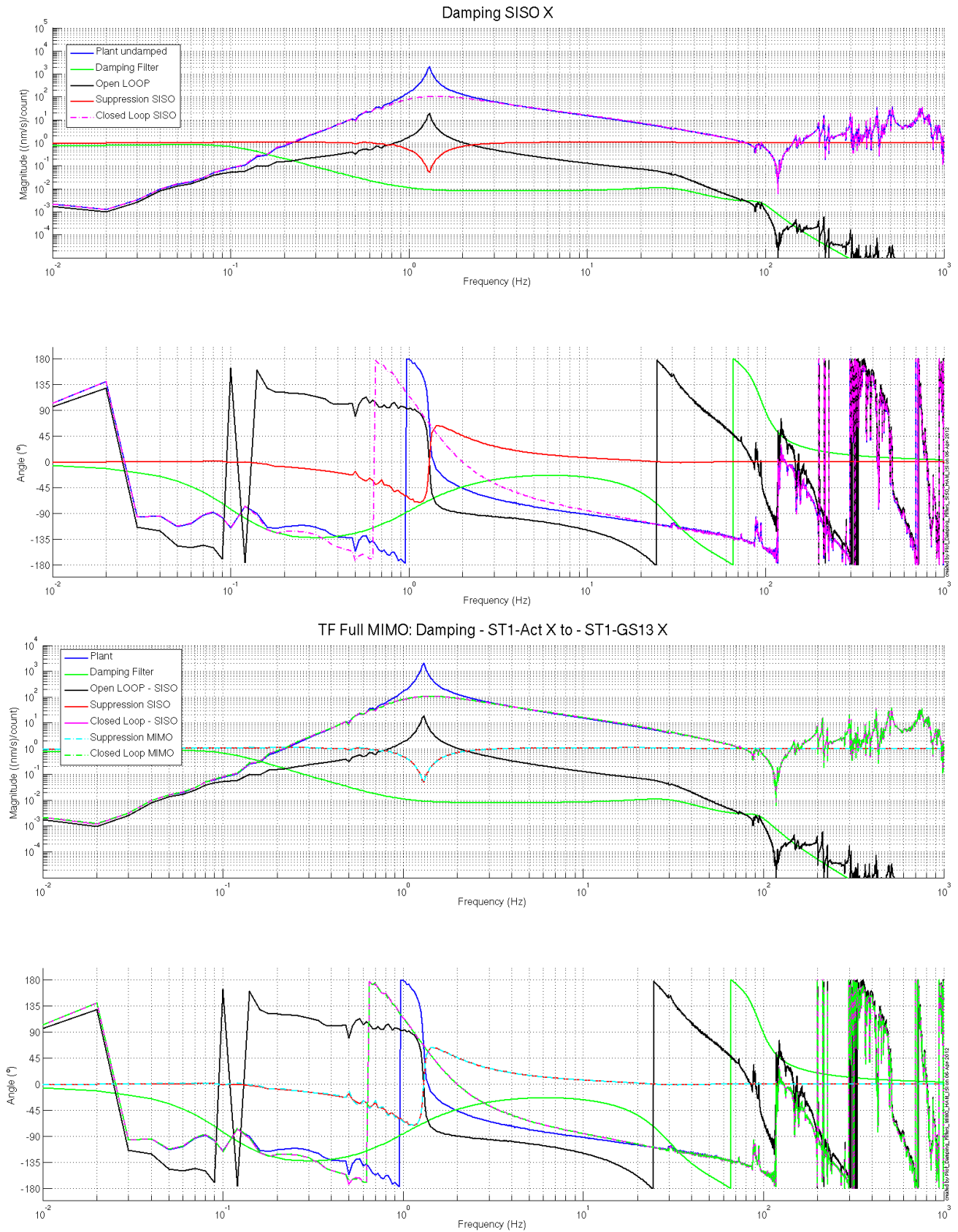


Figure – Simulated damping performances

Acceptance criteria:

- HAM6 damping loops must implemented and stable with
 - o Phase margin must be at least 45°
 - o Gain margin must be at least 20dB

Test result:**Passed:** X **Failed:** ___

- ***Step 19.2 - Powerspectra – Experimental***

Scripts files for taking data and plotting in SVN at:

/SeiSVN/seismic/HAM-ISI/X1/Scripts/Data_Collection/

- Master_TEST_X1_ISI_Unit_4.m (lines 99 to 114)

Data files in SVN at:

/SeiSVN/seismic/HAM-ISI/X1/HAMX/Data/Spectra/Damped/

- LHO_ISI_UNIT_4_ASD_m_CPS_GS13_Undamped_vs_Damped_2012_03_16_154951.mat

Figures in SVN at:

/SeiSVN/seismic/HAM-ISI/X1/HAMX/Data/Figures/Spectra/Damped/

- LHO_ISI_UNIT_2_ASD_CT_CPS_CART_Undamped_vs_Damped04_04_142551.fig
- LHO_ISI_UNIT_2_ASD_CT_GS13_CART_Undamped_vs_Damped04_04_142551.fig
- LHO_ISI_UNIT_2_ASD_m_CPS_CART_Undamped_vs_Damped04_04_142551.fig
- LHO_ISI_UNIT_2_ASD_m_GS13_CART_Undamped_vs_Damped04_04_142551.fig
- LLO_HAM_ISI_Unit_2_Calibrated_PSD_CPS_Undamped_Damped04_04_142551.fig

Issues/difficulties encountered during this test:

Like for Unit #2, damping was slightly overestimated along Z-axis.

LHO HAM-ISI - Unit #4 - April 4th 2012

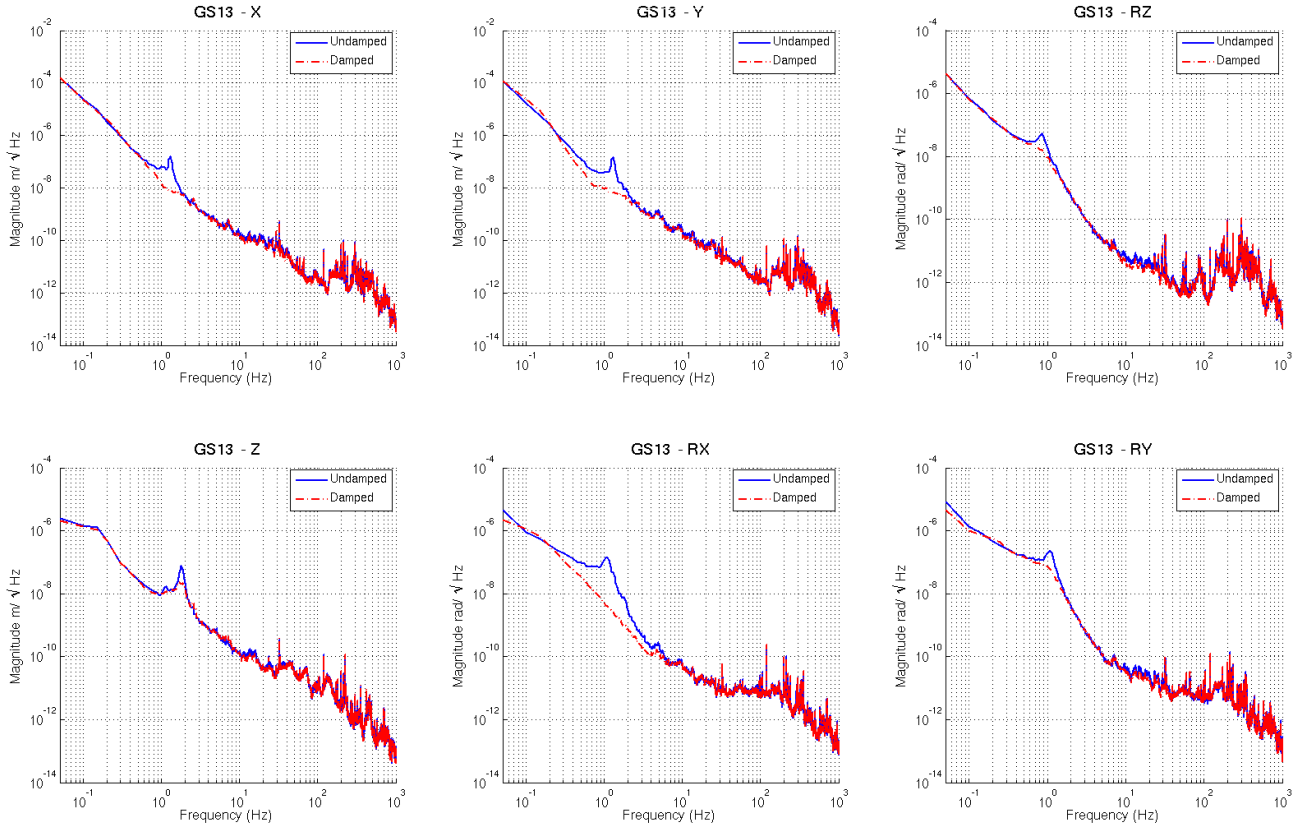


Figure - Damped/Undamped GS-13 Power Spectra comparison

Acceptance criteria:

- HAM6 damping loop must stable when all damping loops are engaged
- Similar damping effect than in simulated plots

Test result:

Passed: X

Failed:

IV. HAM-ISI Unit #4 testing summary

HAM-ISI Unit #4 was built in March 2012. Tests presented here were performed between March 28th 2012 and April 4th 2012. Tests were performed in accordance with E1000309-V9 procedure.

Particularities:

- This Unit received two production GS13s from Unit #2
- This Unit is equipped with a full set of production GS13

Complementary inquiries:

- Effect of washers' disposition/thickness on high frequency unwanted resonances/noise (LHO alog # 2520)

FAILED AND WAIVED TESTS

- ***List of tests that failed and don't need to be redone:***

Step III.2: Excessive standard deviation on CPSs is associated to ground motion (SEI logbook, entry #15). Sensor noise is acceptable.

- ***Tests that failed and need to be done during phase II***

Step III.14: Actuators appear to be linear on measurements. However, deviation from average slope is out of spec. It seems to correlate with cable+actuator resistance measurements. Make sure that linearity test results correlate with the final field cables.

This scale factor, which varies from an actuation point to another, could be corrected with an adjustment gain applied on the excitation signal sent to the actuators.

- ***List of test that were skipped and that we will not do because they are not essential***

Step III.3: Sensor gap measurement with a jig. Waived to avoid scratching targets. Distance between sensor and target has also been checked during the assembly while adjusting target distance.