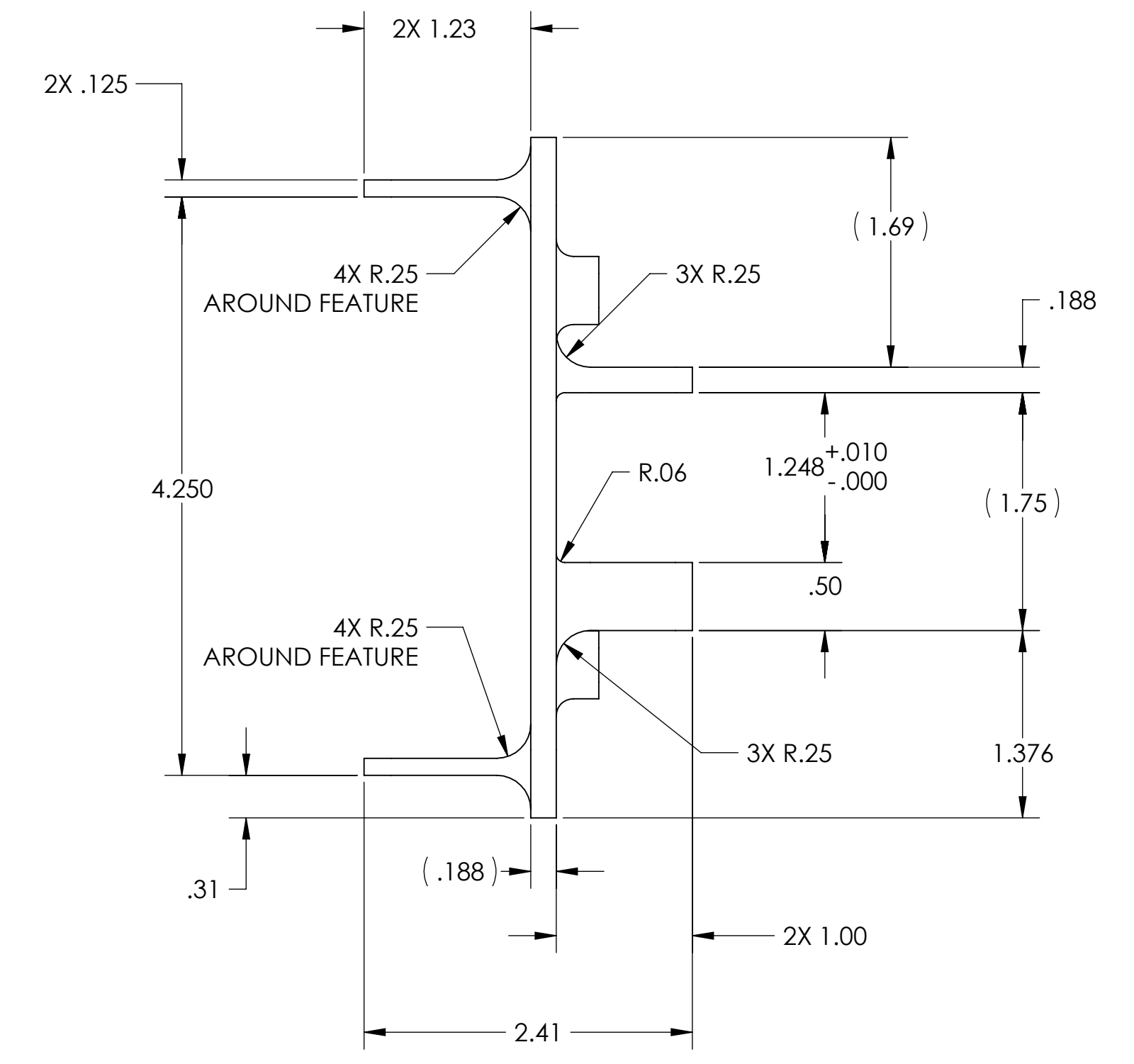
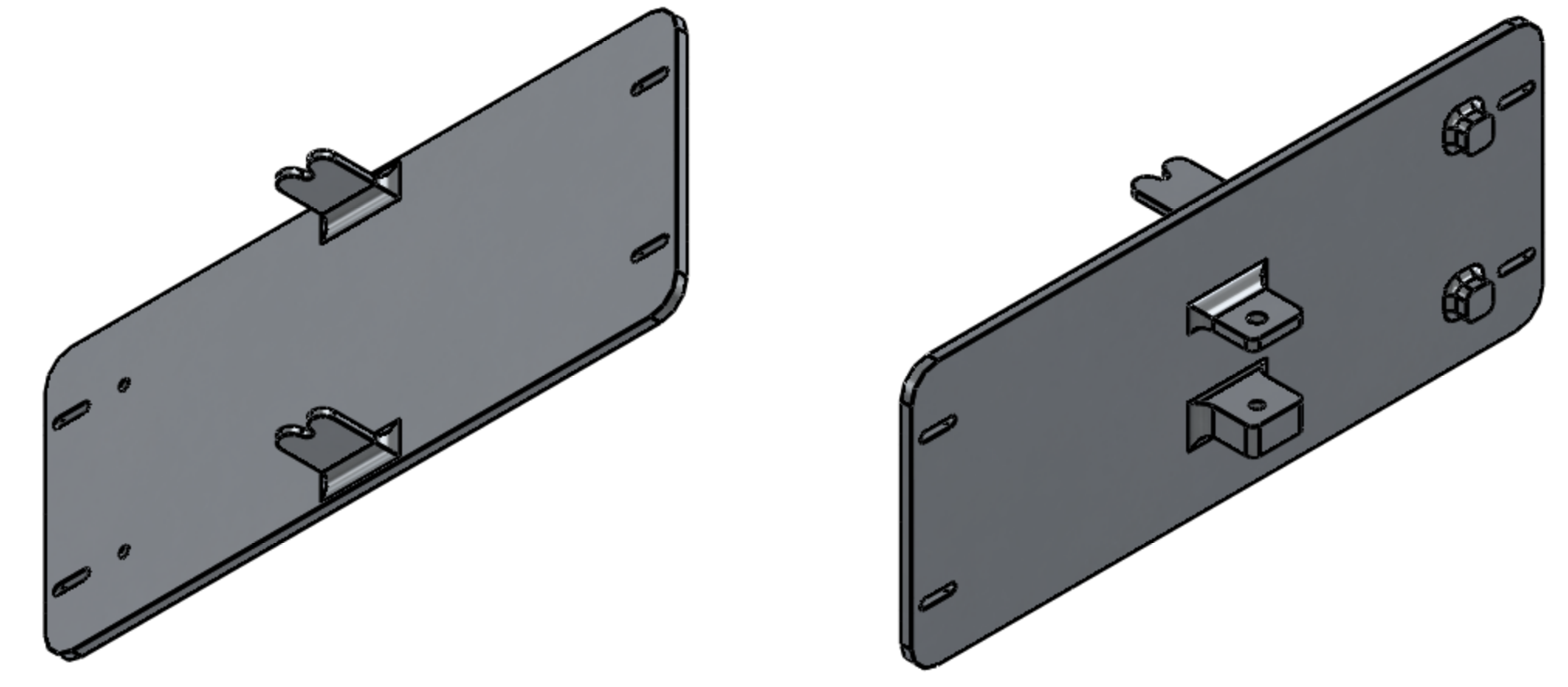
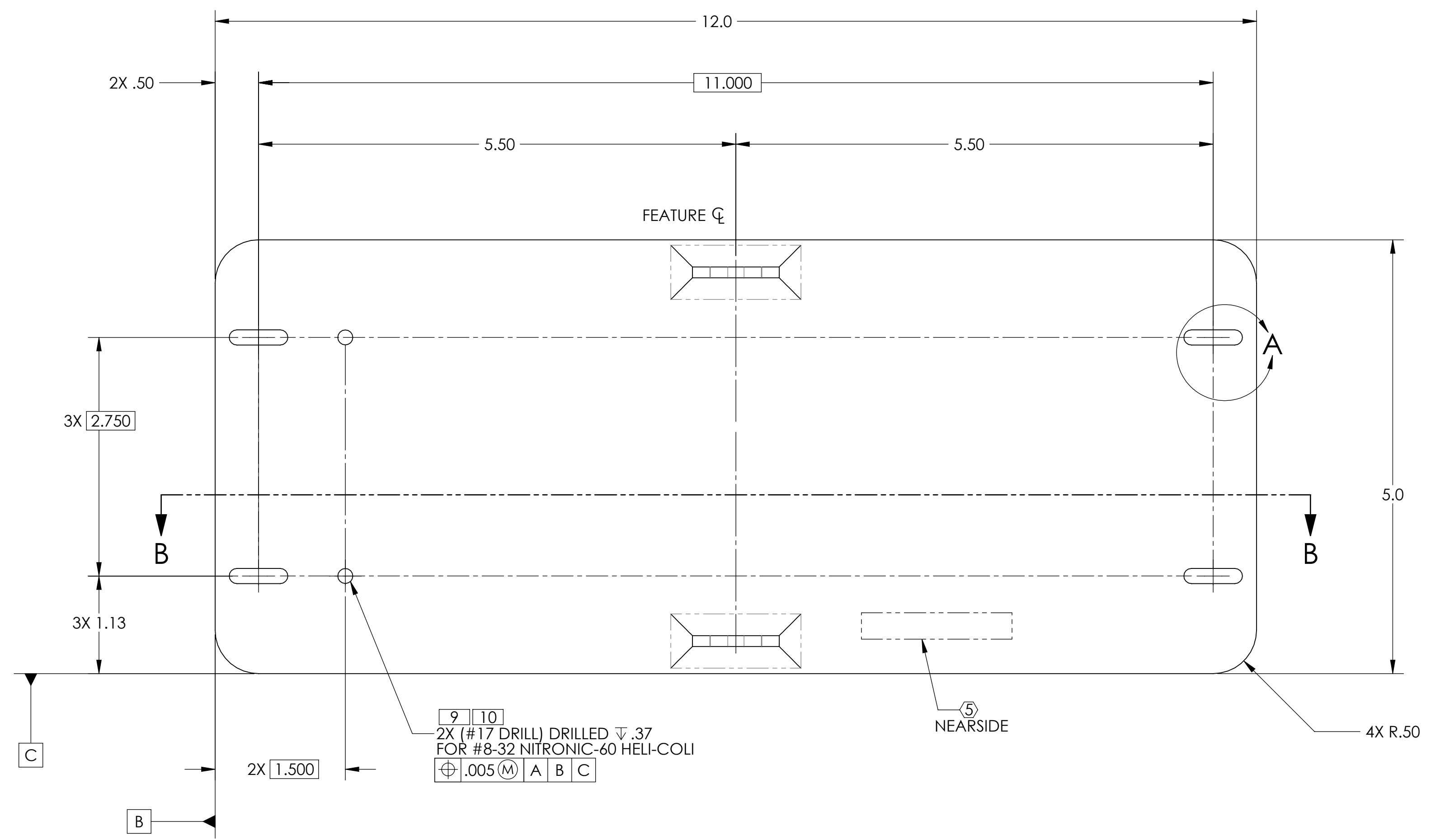
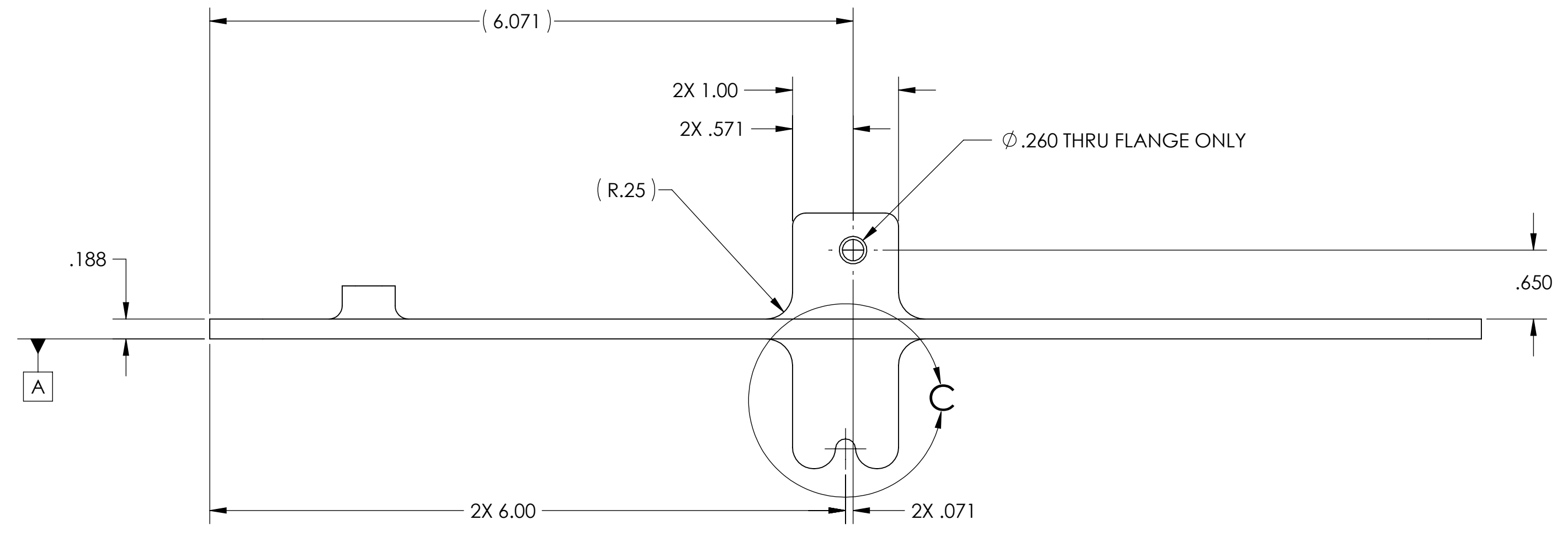


**NOTES CONTINUED:**  
 5. SCRIBE, ENGRAVE, OR MECHANICALLY STAMP (NO INKS OR DYES) DRAWING PART NUMBER, REVISION (AND VARIANT OR TYPE IF APPLICABLE) ON NOTED SURFACE OF PART FOLLOWED ON THE NEXT LINE WITH A THREE DIGIT SERIAL NUMBER. SERIAL NUMBERS START AT 001 FOR THE FIRST ARTICLE AND PROCEED CONSECUTIVELY. USE MINIMUM 0.12" HIGH CHARACTERS. UNLESS THE SIZE OF THE PART DICTATES SMALLER CHARACTERS. A VIBRATORY TOOL MAY BE USED. EXAMPLE: DXXXXXX-VY, TYPE-XX, S/N XXX

- 6. APPROXIMATE WEIGHT = 1.176 LB.
- 7. MACHINE ALL SURFACES TO REMOVE OXIDES AND MILL FINISH, USE OF ABRASIVE REMOVAL TECHNIQUES IS NOT ALLOWED.
- 8. ALL PARTS SHALL BE MANUFACTURED IN ACCORDANCE WITH LIGO SPECIFICATION E0900364
- 9. ALL HELI-COIL HOLES TO BE PREPARED ACCORDING TO EMHART HELI-COIL PRODUCT CATALOG, HC2000, REV 4
- 10. ALL HELI-COIL INSERTS TO BE INSTALLED BY LIGO PERSONNEL, AFTER DELIVERY OF FINISHED PARTS, USE NITRONIC 60 THREADED INSERTS.



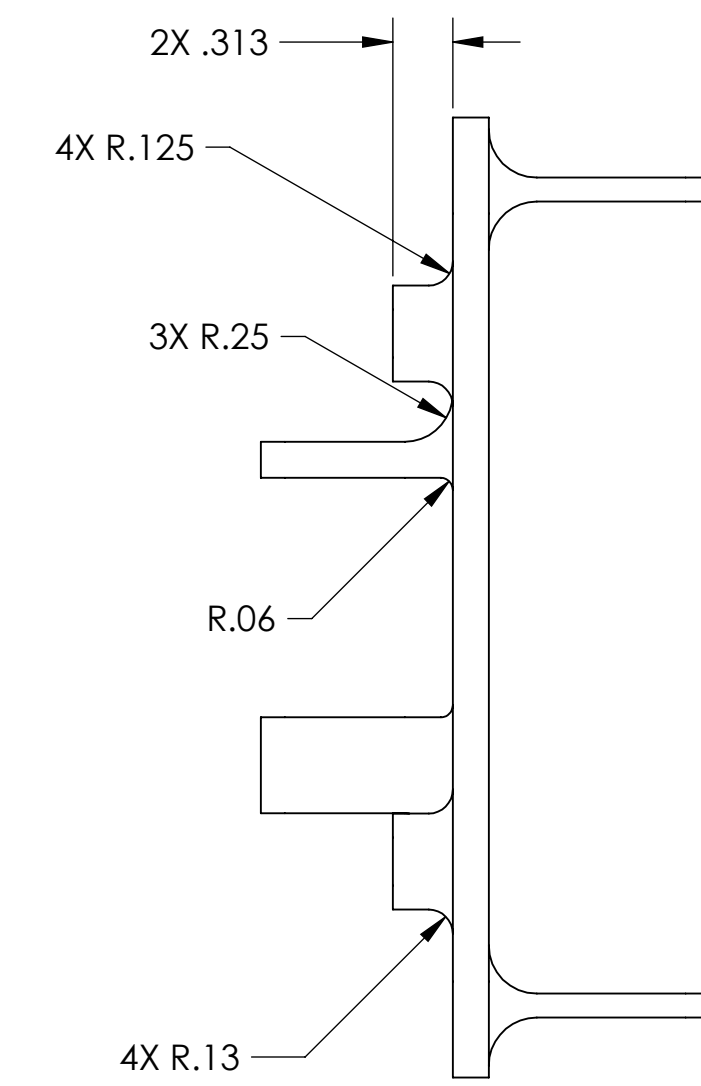
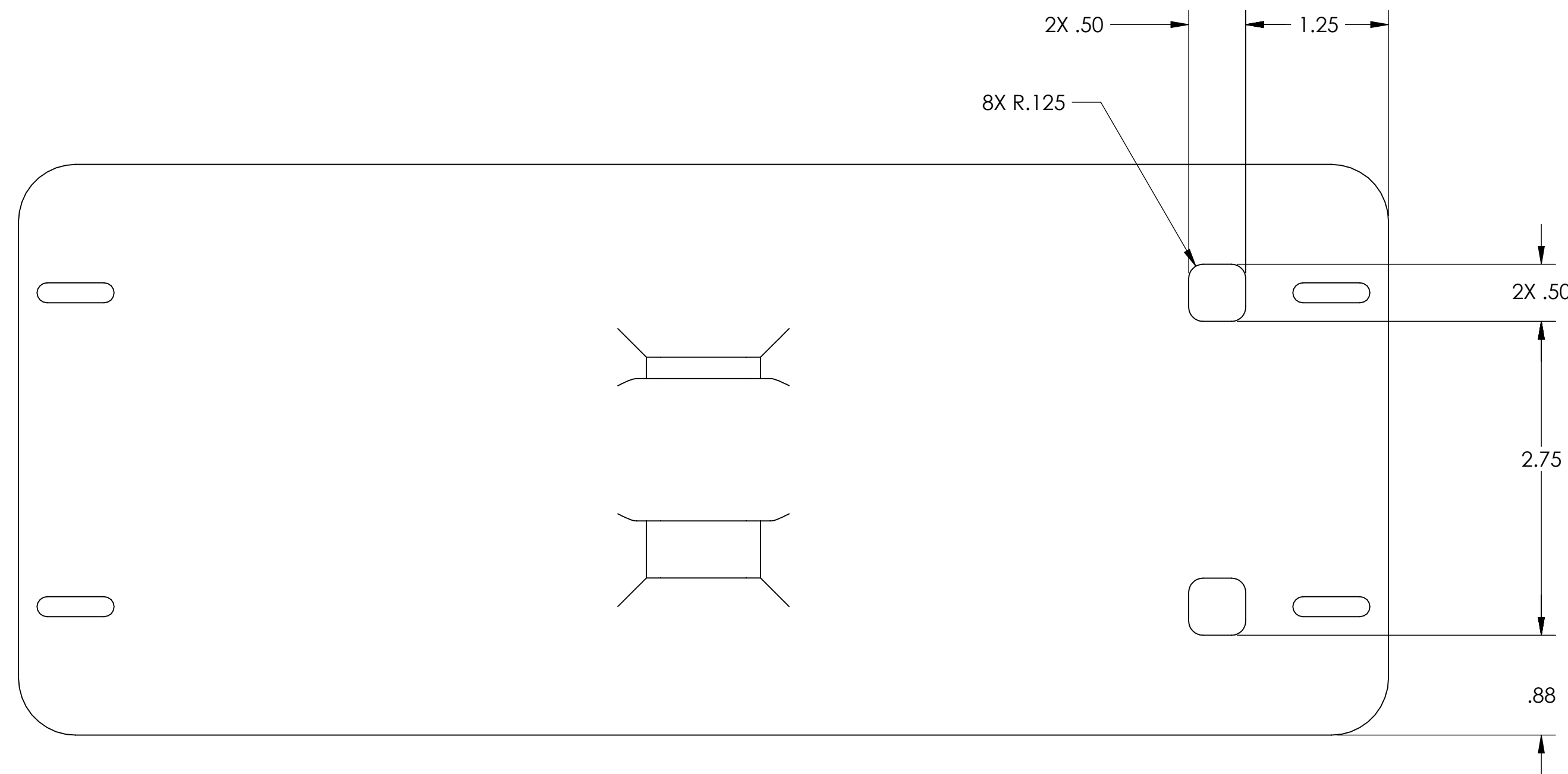
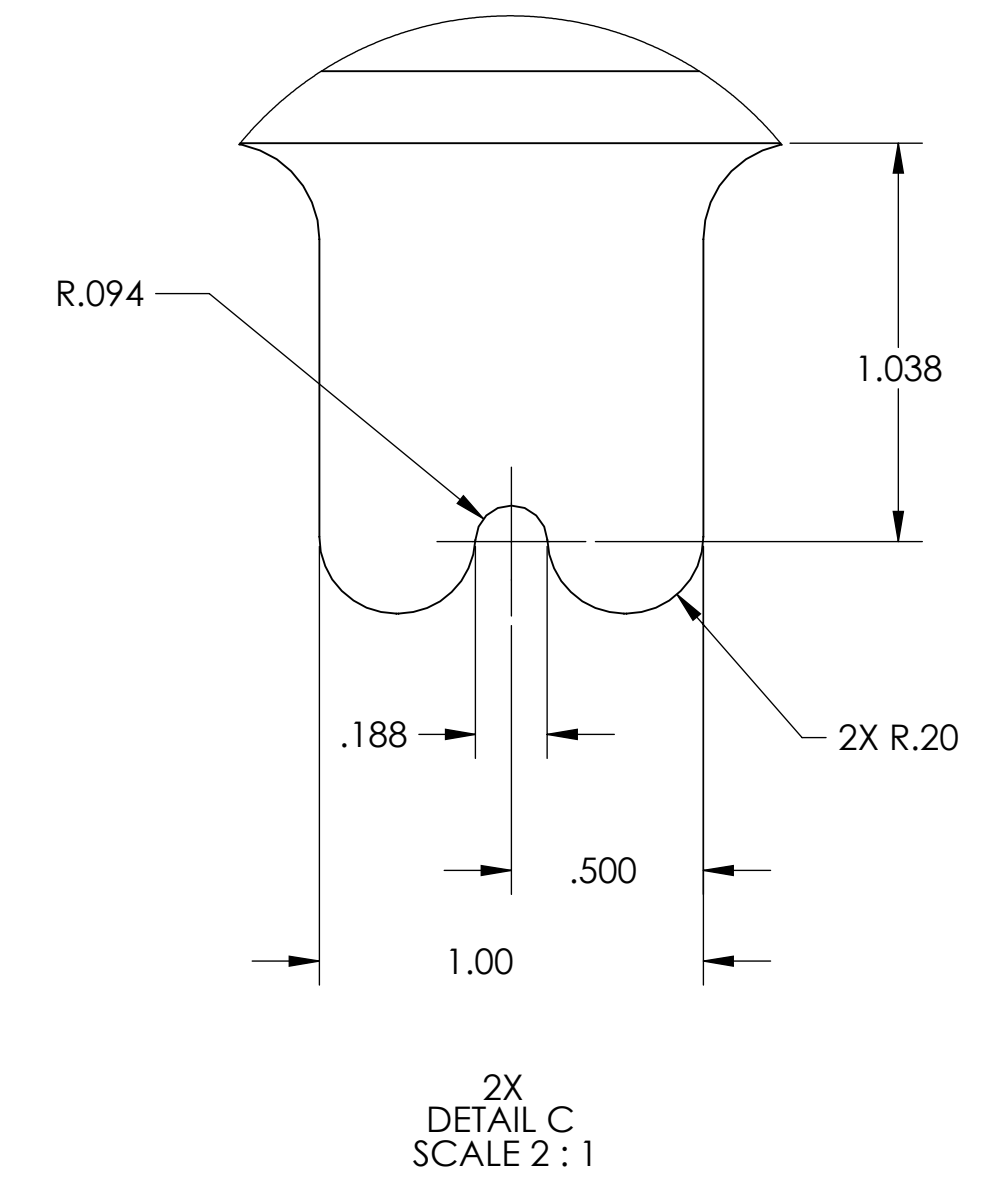
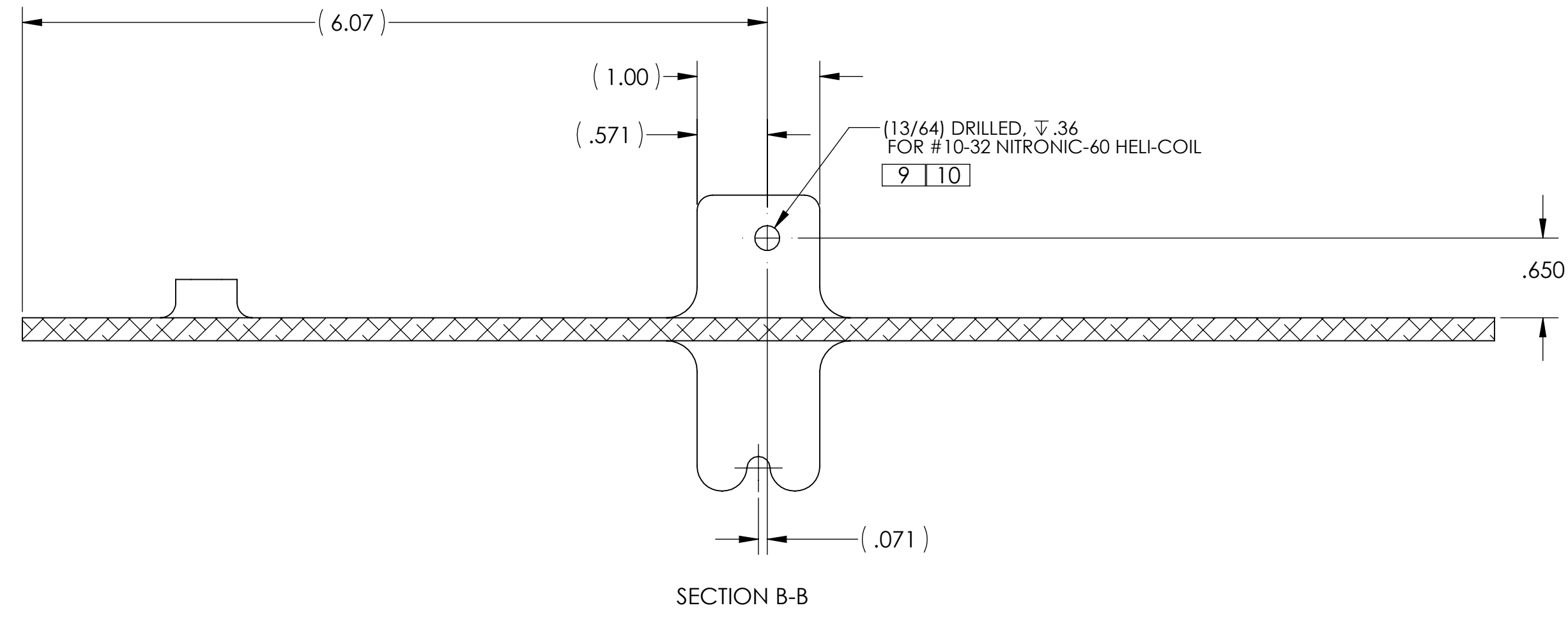
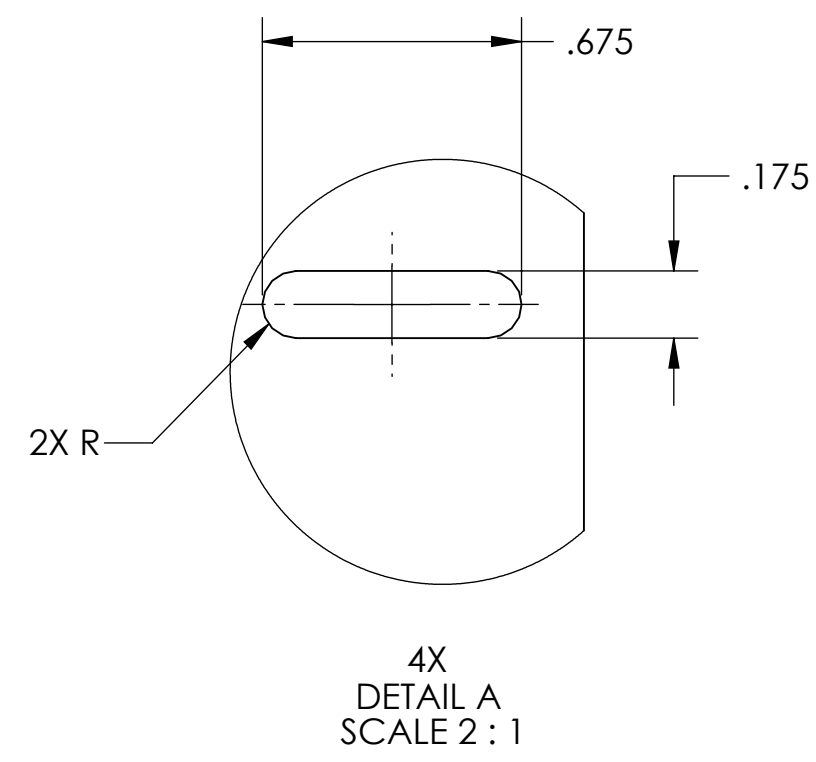
DIMENSIONS ARE IN INCHES		TOLERANCES: .XX ± .01 .XXX ± .005		ANGULAR ± 0.1°	
MATERIAL		FINISH		NEXT ASSY	
6061-T6 (SS)		32 μinch		D1001742	

**NOTES AND TOLERANCES: (UNLESS OTHERWISE SPECIFIED)**  
 1. INTERPRET DRAWING PER ASME Y14.5-1994.  
 2. REMOVE ALL SHARP EDGES, R.02 MIN.  
 3. DO NOT SCALE FROM DRAWING.  
 4. ALL MACHINING FLUIDS MUST BE FULLY SYNTHETIC, FULLY WATER SOLUBLE AND FREE OF SULFUR, SILICONE, AND CHLORINE.

**LIGO** CALIFORNIA INSTITUTE OF TECHNOLOGY  
 MASSACHUSETTS INSTITUTE OF TECHNOLOGY  
 SYSTEM ADVANCED LIGO SUB-SYSTEM AOS

PART NAME		DESIGNER		DATE		SIZE		DWG. NO.		REV.	
EL FINE ADJUST PIVOT PLATE		M. JACOBSON		08 JUL 2010		D		D1002311		v1	
DRAFTER		CHECKER		APPROVAL		SCALE		PROJECTION		SHEET 1 OF 2	
A. COLE		M. JACOBSON		C. TORRIE		1:1		[Symbol]		1	

D1002311\_L1\_CS\_UHP\_EL\_FINE\_ADJUST\_PIVOT\_PLATE\_PDR\_PDM\_REV\_K012\_DRAWING\_PDM\_REV\_X01P



D:\002311\1\_CS\UHV\ELFINE ADJUST PIVOT PLATE.PART PDM\REV.X012.DRAWING PDM\REV.X-019