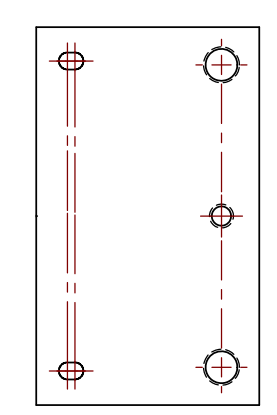
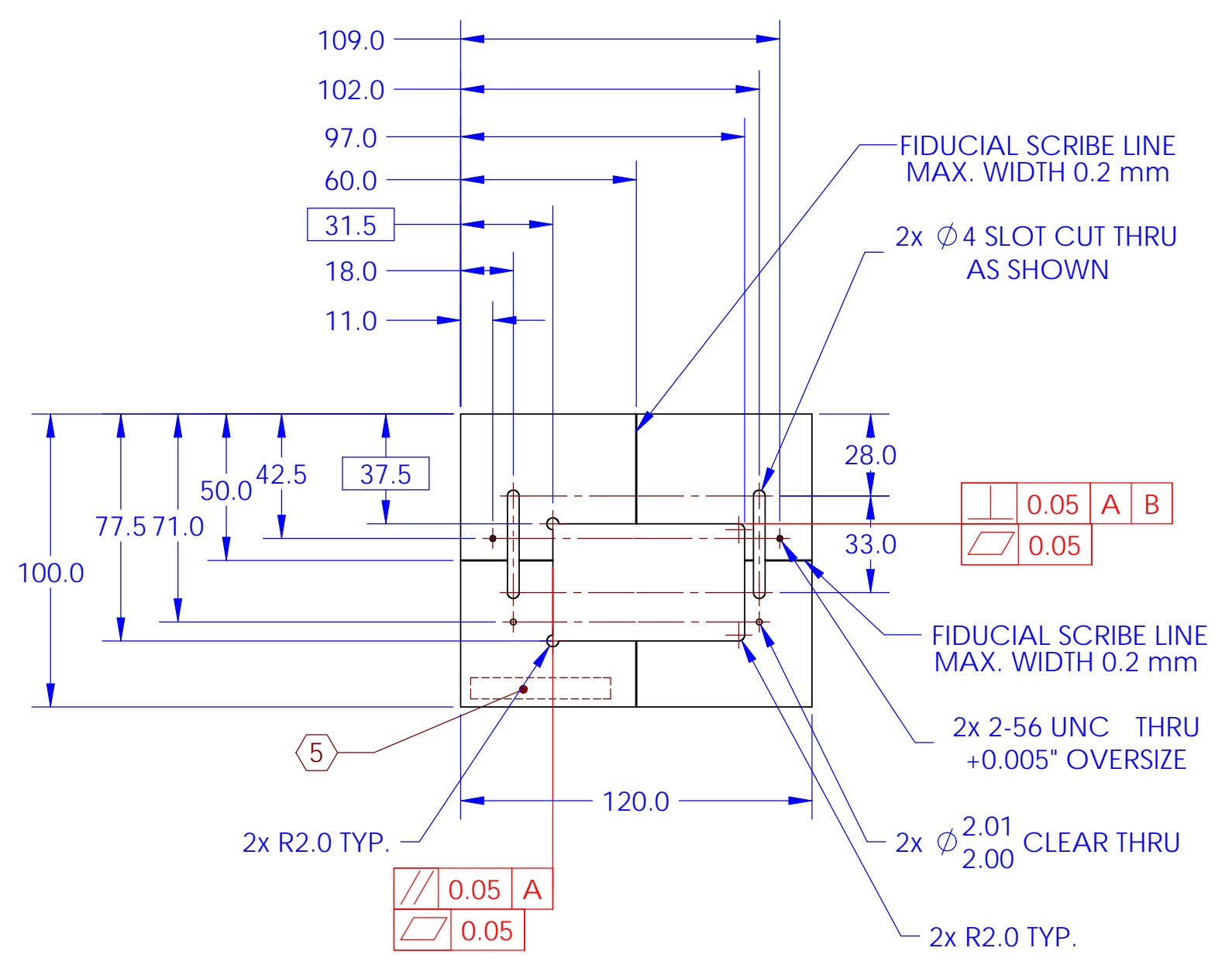
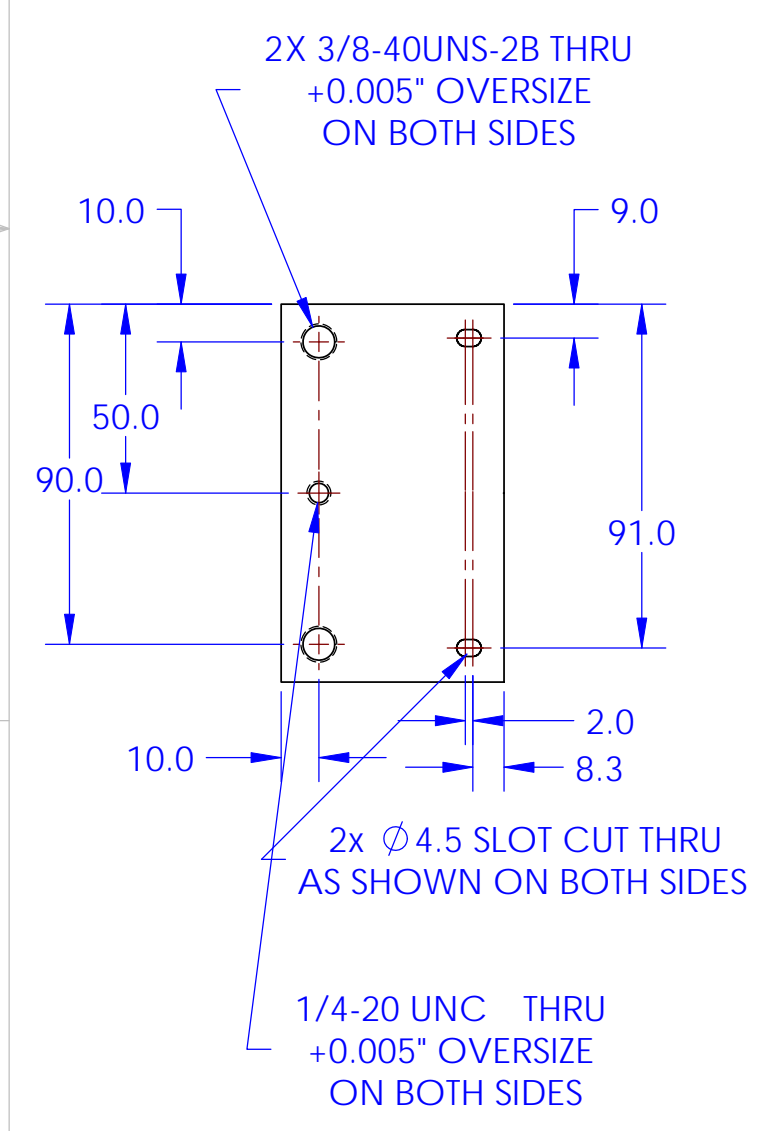
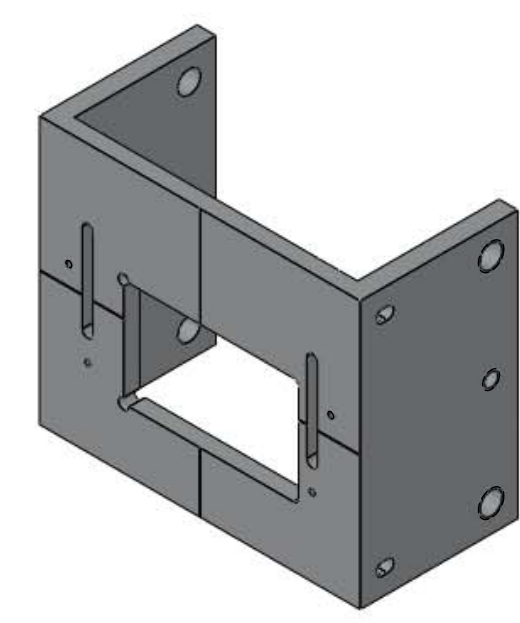
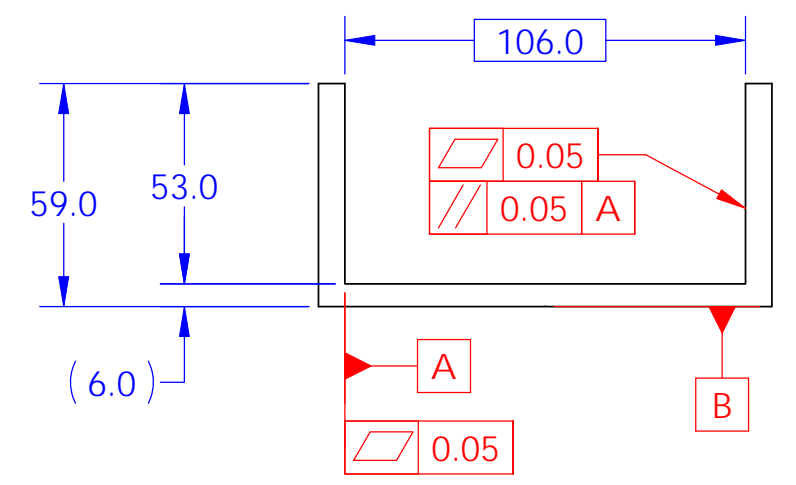


REV.	DATE	DCN #	DRAWING TREE #
v1	21/10/2010	-	-
-	-	-	-
-	-	-	-

**NOTES CONTINUED:**

⑤ SCRIBE, ENGRAVE, OR MECHANICALLY STAMP (NO INKS OR DYES) DRAWING PART NUMBER AND REVISION ON NOTED SURFACE FOLLOWED ON THE NEXT LINE BY A THREE DIGIT SERIAL NUMBER. SERIAL NUMBERS START AT 001 FOR THE FIRST ARTICLE AND PROCEED CONSECUTIVELY. USE .07" HIGH CHARACTERS. EXAMPLE: DXXXXXX-VY, S/N 001. A VIBRATORY TOOL MAY BE USED.



NOTES AND TOLERANCES: (UNLESS OTHERWISE SPECIFIED)				LIGO		PART NAME	
DIMENSIONS ARE IN mm				CALIFORNIA INSTITUTE OF TECHNOLOGY		aLIGO TCP PRISM BONDING BASEPLATE	
TOLERANCES: .X ± 0.1 .XX ± 0.01				MASSACHUSETTS INSTITUTE OF TECHNOLOGY		DESIGNER	M. van Veggel 13/08/2010
ANGULAR ± 0.2°				SYSTEM		DRAFTER	M.v.Veggel 11/10/2010
1. INTERPRET DRAWING PER ASME Y14.5-1994. 2. REMOVE ALL SHARP EDGES, R5 MIN. 3. DO NOT SCALE FROM DRAWING. 4. ALL MACHINING FLUIDS MUST BE FULLY SYNTHETIC, FULLY WATER SOLUBLE AND FREE OF SULFUR, SILICONE, AND CHLORINE.				aLIGO		CHECKER	R.Jones 14/10/2010
MATERIAL				SUB-SYSTEM		APPROVAL	
6061 Alloy				SUS		SCALE: 1:2	PROJECTION:
FINISH				NEXT ASSY		SIZE DWG. NO.	
1.6 µm				D1002141		B D1002142	
						REV.	
						v1	
						SHEET 1 OF 1	

D1002142\_aLIGO\_TCP\_PRISM\_BONDING\_BASEPLATE\_PART PDM REV: v1, DRAWING PDM REV: