

NOTES CONTINUED:
 5. FULL WELDED CONSTRUCTION.

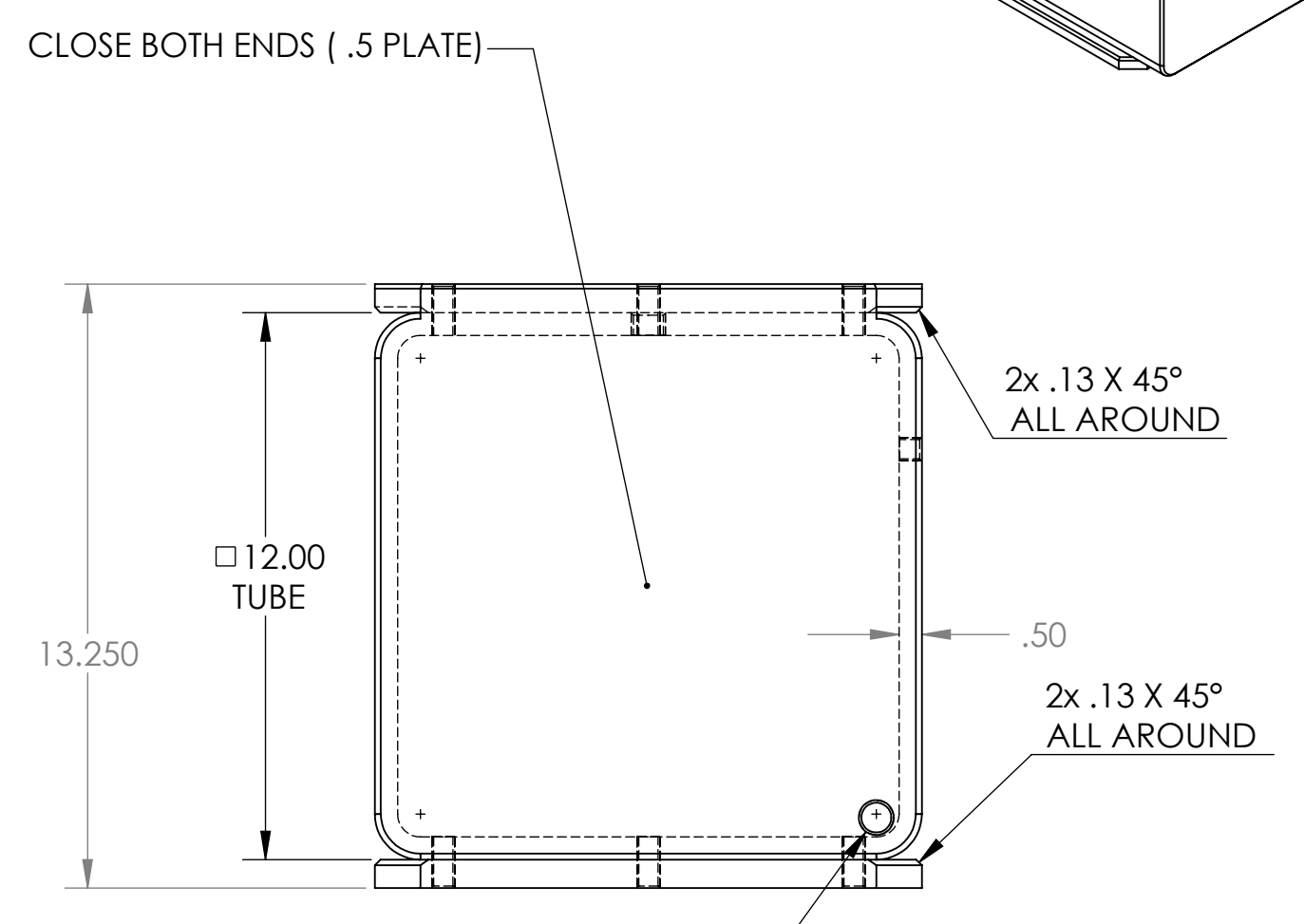
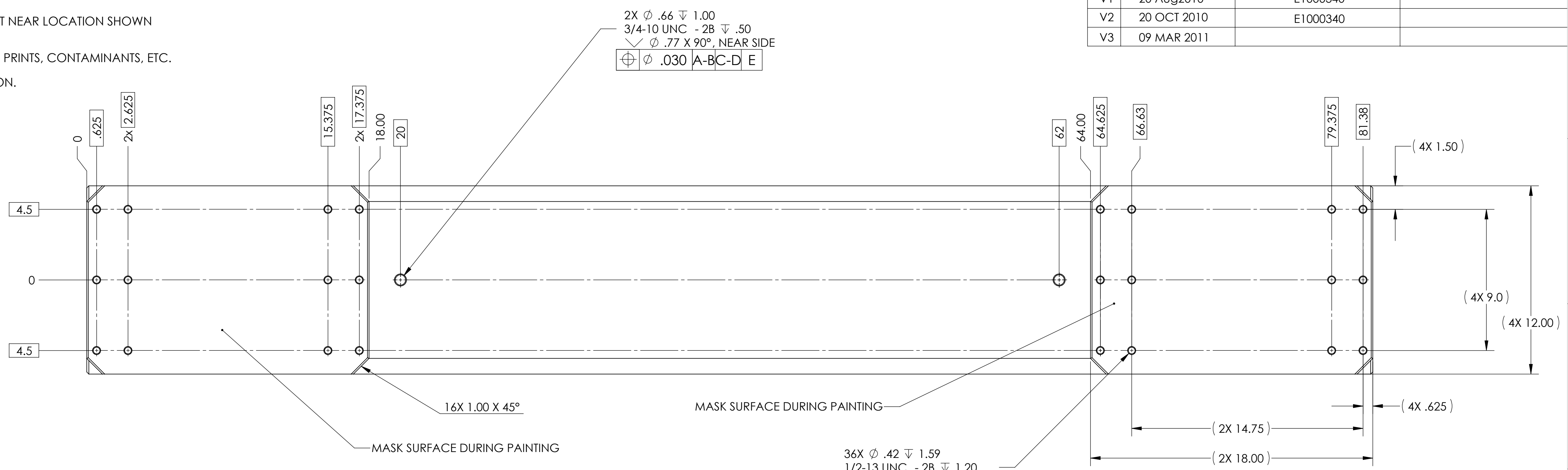
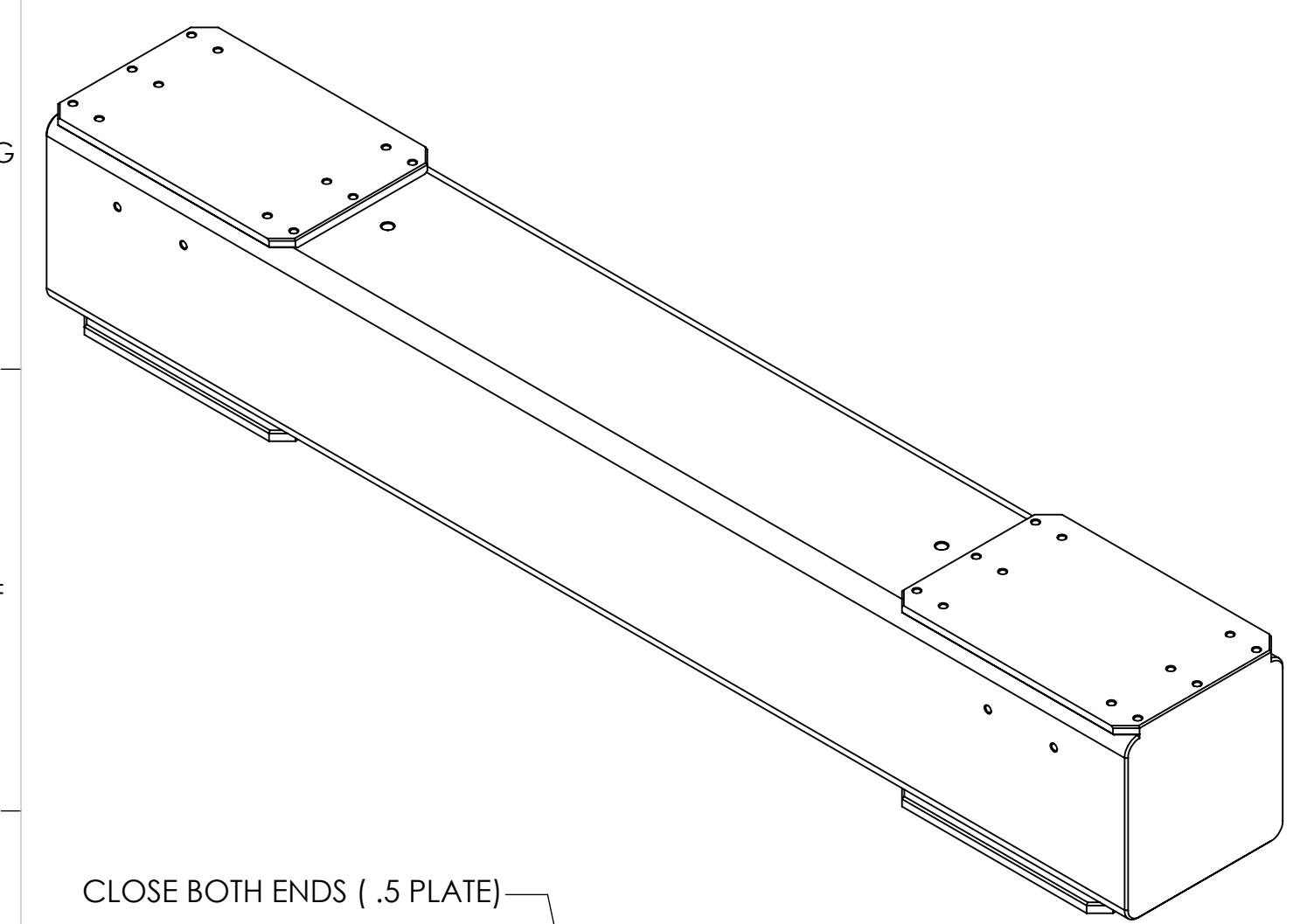
6. PART NUMBER (DRAWING NO. PLUS REVISION) TO BE CLEARLY MARKED ON THE PART NEAR LOCATION SHOWN
 EXAMPLE: **D1002125-V1** (~ 1" CHARACTERS)

7. BEFORE FINISHING REMOVE ALL: MILL SCALE, OXIDATION, GREASE, OIL, DIRT, FINGER PRINTS, CONTAMINANTS, ETC.

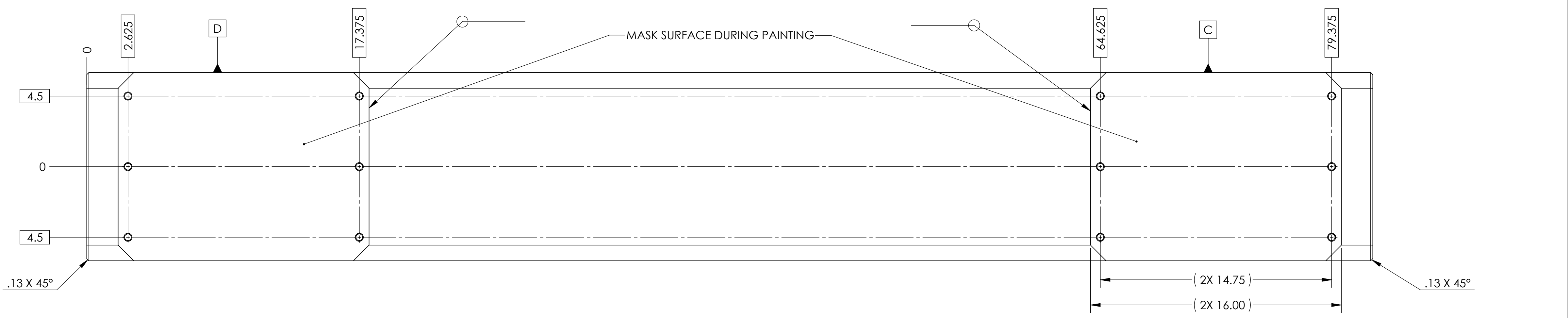
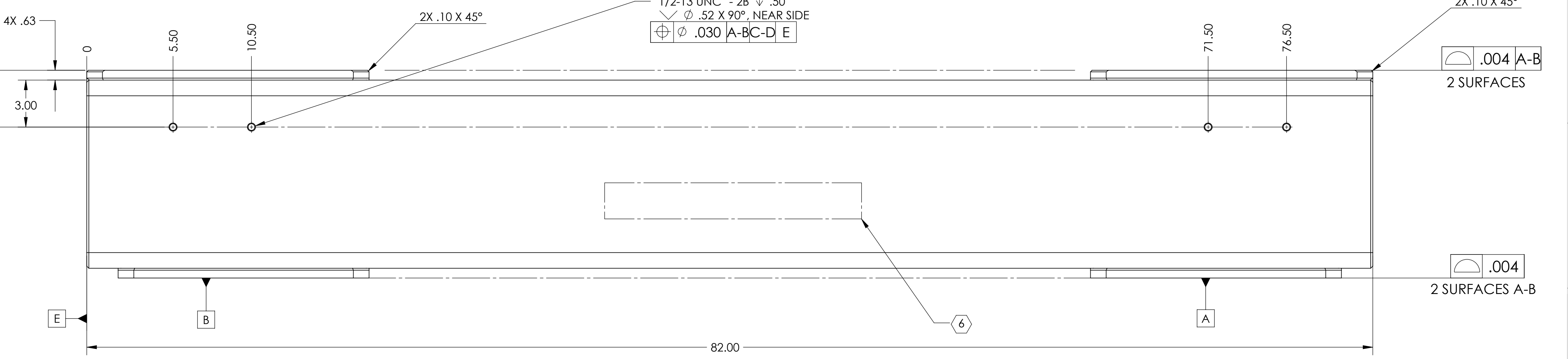
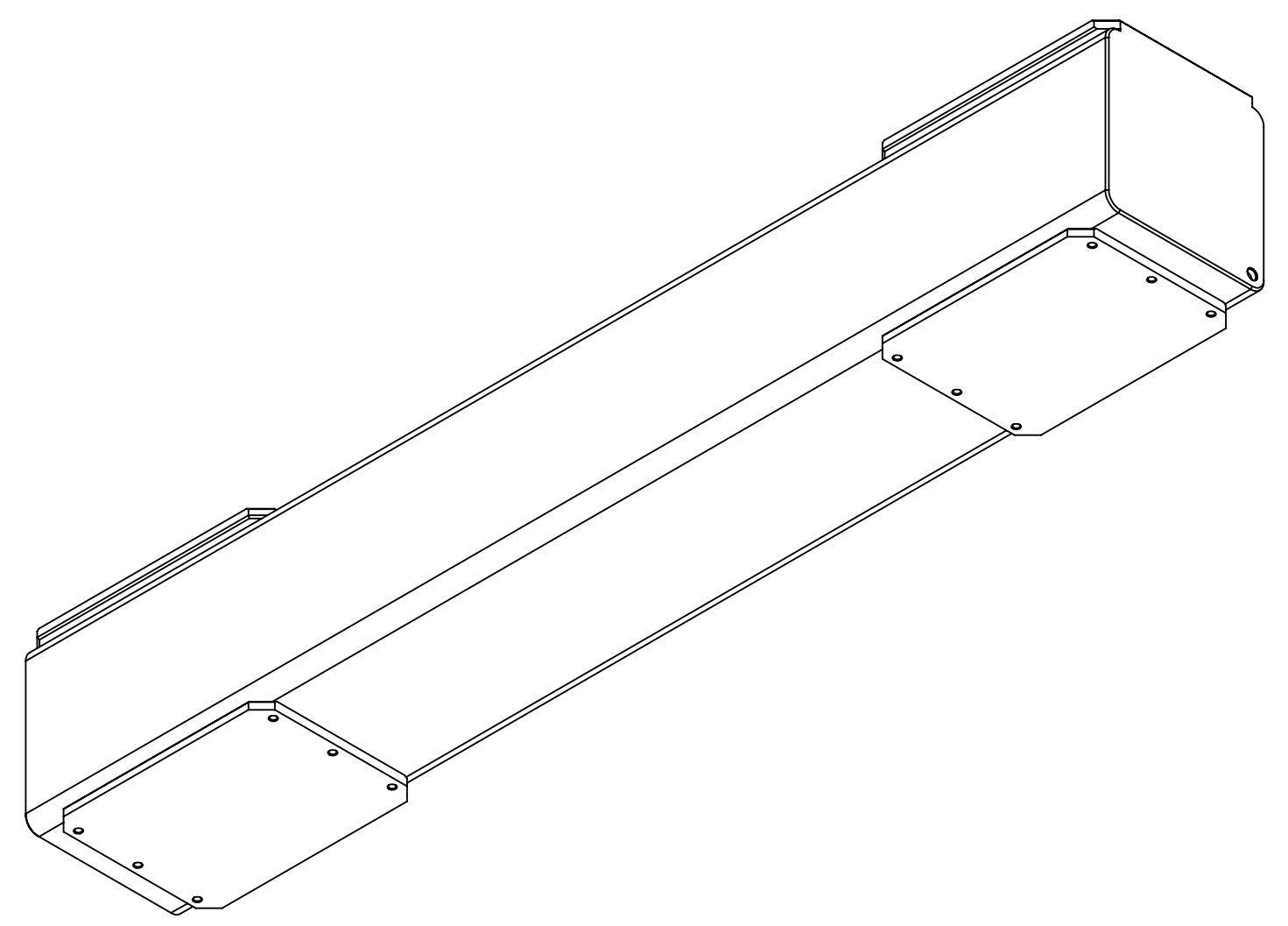
8. PRIME WITH SHERWIN WILLIAMS INDUSTRIAL WASH PRIMER "P60G2" PER SPECIFICATION.

9. PAINT SMOOTH WHITE, SHERWIN WILLIAMS "POLANE HS-PLUS" POLYURETHANE ENAMEL P/N F63W66.

| REV. | DATE | DCN # | DRAWING TREE # |
|------|-------------|----------|----------------|
| V1 | 20 Aug2010 | E1000340 | |
| V2 | 20 OCT 2010 | E1000340 | |
| V3 | 09 MAR 2011 | | |



Ø .66 ± 1.00
 3/4-10 UNC - 2B ± .50
 √ ∅ .77 X 90°, NEAR SIDE
 (DRAIN HOLE)



| NOTES AND TOLERANCES: (UNLESS OTHERWISE SPECIFIED) | |
|--|--|
| 1. INTERPRET DRAWING PER ASME Y14.5-1994. | |
| 2. REMOVE ALL SHARP EDGES, R.02 MIN. | |
| 3. DO NOT SCALE FROM DRAWING. | |
| 4. ALL MACHINING FLUIDS MUST BE FULLY SYNTHETIC, FULLY WATER SOLUBLE AND FREE OF SULFUR, SILICONE, AND CHLORINE. | |
| DIMENSIONS ARE IN INCHES | TOLERANCES: .XX ± .025 .XXX ± .010 |
| ANGULAR ± 0.5° | |
| MATERIAL | FINISH |
| ASTM a500 Grade-B Tube, A36 Plate | 125 μinch |

| | | |
|---|---|----------|
| CALIFORNIA INSTITUTE OF TECHNOLOGY MASSACHUSETTS INSTITUTE OF TECHNOLOGY | PART NAME | |
| | Cross Brace, Stand, Test, BSC-ISI+Quad + HAM-ISI, aLIGO | |
| SYSTEM | SUB-SYSTEM | DESIGNER |
| ADVANCED LIGO | SEI | sbarnum |
| NEXT ASSY | | CHECKER |
| D1002124 | | MHILLARD |
| | | APPROVAL |
| | | KMASON |

| DATE | SIZE | DWG. NO. | REV. |
|-------------|------|----------|------|
| 10 Aug 2010 | D | D1002125 | v3 |
| 18 Aug 2010 | | | |
| 19 Oct 2010 | | | |
| 20 Oct 2010 | | | |

SCALE: 1:1 PROJECTION:

D1002125 Cross Brace, Stand, Test, BSC-ISI+Quad + HAM-ISI, aLIGO. PART PDM REV: X-001. DRAWING PDM REV: X-003