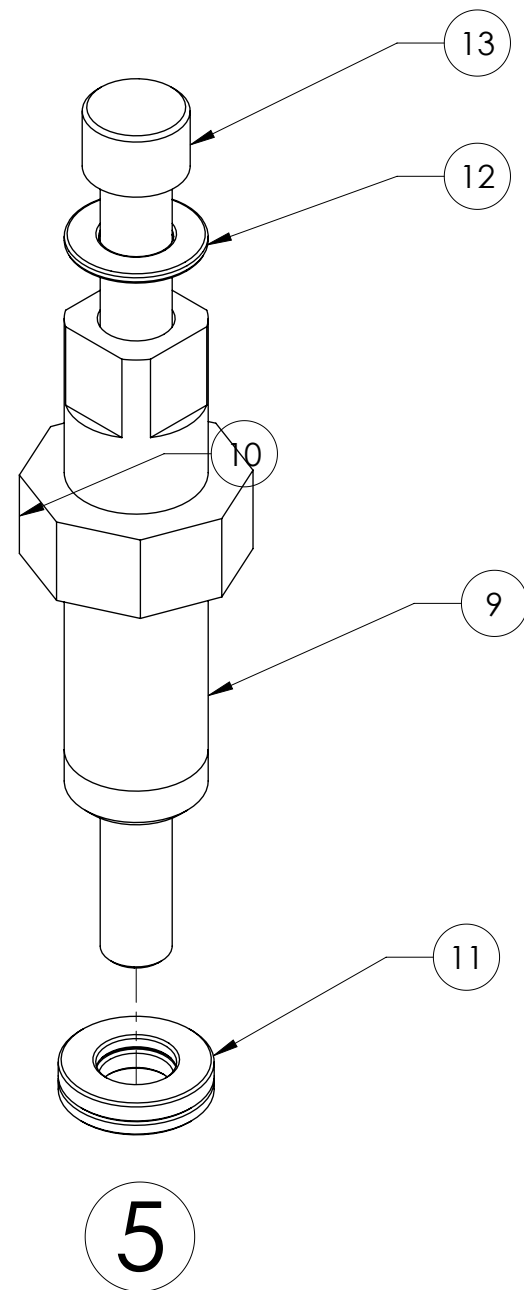
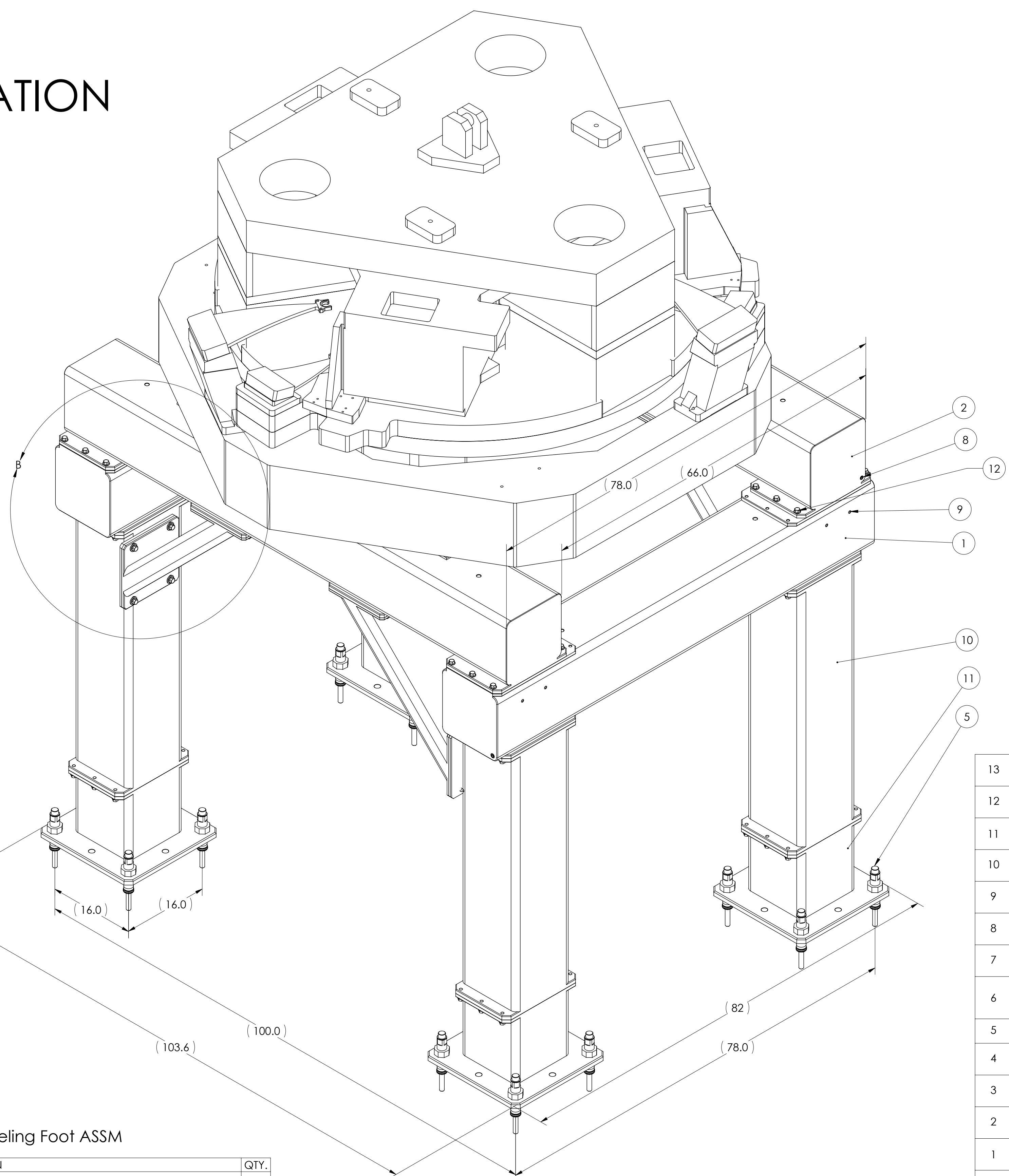


# BSC CONFIGURATION

REV.	DATE	DCN #	DRAWING TREE #
V2	20 OCT 2010	E1000340	



5 Test/Assembly Stand, Leveling Foot ASSM

ITEM NO.	PART NUMBER	DESCRIPTION	QTY.
9	D050331	LEVELING FOOT THRU-BOLT FOR THE BSC-HAM ISI TEST STAND	1
10	D050332	Test/Assembly Stand, Leveling foot, Nut	1
11	McM_91131A090	McMaster 91131A090 Black Oxide Steel Self-Aligning Setup Washer Set, 3/4" Size, 25/32" Male ID	1
12	McM_90126A036	McMaster 90126A036 SAE Flat Washer 3/4" Size, 13/16" ID, 1-1/2" OD, .108" min Thk Zinc-Plated Steel	1
13	McM_91257A866	McMaster 91257A866 Grade 8 Hex Head Cap Screw Zinc Yellow-Plated, 3/4"-10 Thread, 10" Length	1

ITEM NO.	PART NUMBER	DESCRIPTION	MATERIAL	QTY.	SPARE	TOTAL
13	McMaster 92316A754	1/2"-20 x 1-1/2" Grade 8 Hex-flange Cap Screw	Plain Carbon Steel	16	0	0
12	McMaster 92316A716	1/2"-13 x 1-1/2" Grade 8 Hex-flange Cap Screw	Plain Carbon Steel	88	0	0
11	D1002661	Foot, Stand, Test, BSC-ISI+Quad + HAM-ISI, aLIGO	ASTM a500 Grade-B	4	0	0
10	D1002727	Left Leg, Stand, Test Stand, BSC-QUAD + HAM, ISIs, aLIGO	ASTM a500 Grade-B	2	0	0
9	McMaster 94105A708	Set Screw 1/2"-13 x 5/8"	Alloy Steel	8	0	0
8	McMaster 91375A832	Set Screw 3/4"-10 x 5/8" Steel	Alloy Steel	4	0	0
7	D0901182	BSC-ISI aLIGO	Material <not specified>	1	0	0
6	McMaster 93852A113	Washer ID.563 OD1.375 T.11 18-8SST	18-8 SSTL	32	0	0
5		Test/Assembly Stand, Leveling Foot ASSM		16	0	0
4	D050263	Test/Assembly Stand, Gusset	ASTM a500 Grade-B	4	0	0
3	D1002126	Right Leg, Stand, Test, BSC-QUAD + HAM, ISIs, aLIGO	ASTM a500 Grade-B	2	0	0
2	D1002127	Support Tube, Stand, Test, BSC-ISI+Quad + HAM-ISI, aLIGO	ASTM a500 Grade-B	2	0	0
1	D1002125	Cross Brace, Stand, Test, BSC-ISI+Quad + HAM-ISI, aLIGO	ASTM a500 Grade-B	2	0	0
ITEM NO.	PART NUMBER	DESCRIPTION	MATERIAL	QTY.	SPARE	TOTAL

NOTES AND TOLERANCES: (UNLESS OTHERWISE SPECIFIED)

DIMENSIONS ARE IN INCHES

**LIGO** CALIFORNIA INSTITUTE OF TECHNOLOGY MASSACHUSETTS INSTITUTE OF TECHNOLOGY

SYSTEM: ADVANCED LIGO SUB-SYSTEM: SEI

PART NAME: Stand, Test, BSC-ISI+Quad + HAM-ISI, aLIGO

DESIGNER: sbarnum 10 AUG 2010 SIZE: D DWG. NO.: D1002124 REV.: v3

DRAFTER: sbarnum 18 Aug 2010

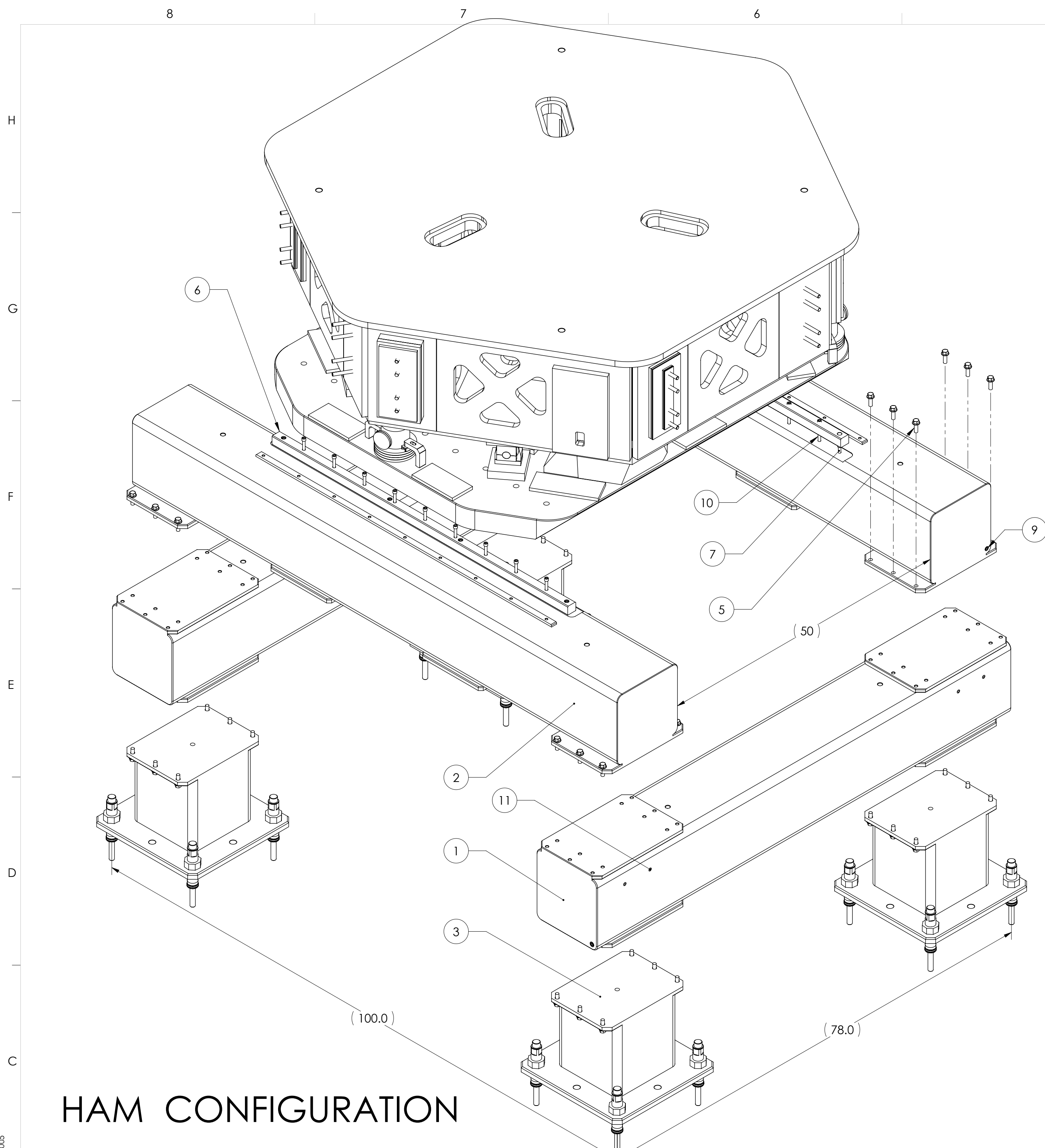
CHECKER: kmason

APPROVAL:

SCALE: 1:20 PROJECTION: SHEET 1 OF 3

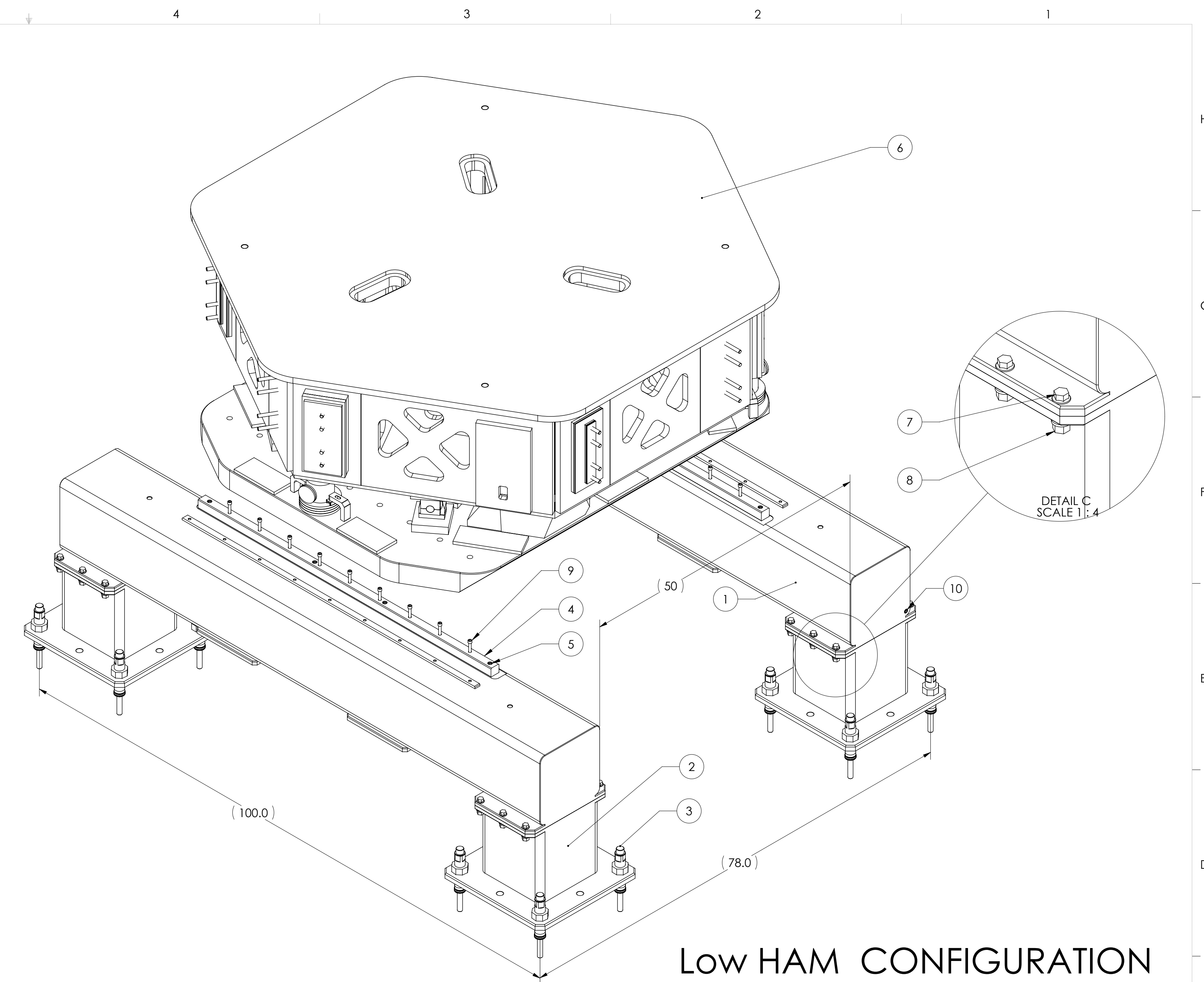
DETAIL B  
SCALE 1:5

D1002124 Stand, Test, BSC-ISI+Quad + HAM-ISI, aLIGO. PART PDM REV: X-003. DRAWING PDM REV: X-005



### HAM CONFIGURATION

ITEM NO.	PART NUMBER	DESCRIPTION	MATERIAL	Default HAM/QTY.	SPAR E	TOTA L
11	McMaster 94105A708	Set Screw 1/2"-13 x 5/8"	Alloy Steel	8		0
10	D0900124	HAM-ISI aLIGO	Rubber	1		0
9	McMaster 91375A832	Set Screws 3/4"-10 x 5/8" Steel	Alloy Steel	4		0
10	McMaster 92196A371	SHCS 3/8"-24 x 3.5" SST	Material <not specified>	15		0
7	McMaster 92196A363	SHCS 3/8" - 24 x 1.5", 18-8	18-8 SSTL	8		0
6	D0901041	HAM to BSC Test Stand Adapter,	6061-T6 Al	2		0
5	McMaster 92316A716	1/2"-13 x 1-1/2" Grade 8 Hex-flange Cap Screw	Plain Carbon Steel	48		0
4		Test/Assembly Stand, Leveling Foot ASSM	N/A	16		0
3	D1002661	Foot, Stand, Test, BSC-ISI+Quad + HAM-ISI, aLIGO	ASTM a500 Grade-B	4		0
2	D1002127	Support Tube, Stand, Test, BSC-ISI+Quad + HAM-ISI, aLIGO	ASTM a500 Grade-B	2		0
1	D1002125	Cross Brace, Stand, Test, BSC-ISI+Quad + HAM-ISI, aLIGO	ASTM a500 Grade-B	2		0

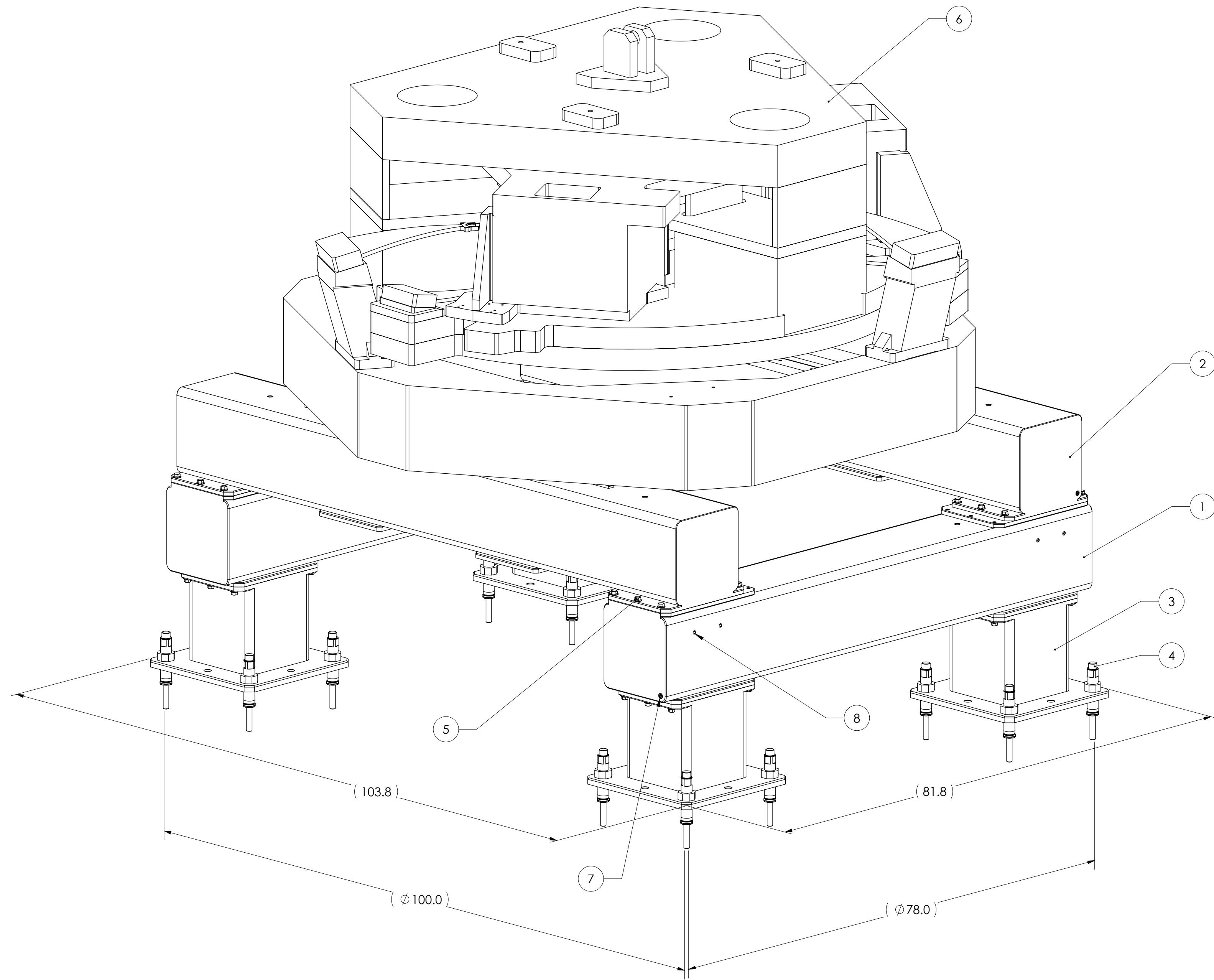


### Low HAM CONFIGURATION

ITEM NO.	PART NUMBER	DESCRIPTION	MATERIAL	Low HAM/QTY.	SPAR E	TOTA L
10	McMaster 91375A832	Set Screw 3/4"-10 x 5/8" Steel	Alloy Steel	2		0
9	McMaster 92196A371	SHCS 3/8"-24 x 3.5" SST	18-8 SSTL	15		0
8	McMaster 94758A033	Flange HEX NUT 1/2"-13, 18-8	18-8 SSTL	24		0
7	McMaster 92316A720	HEX HEAD 1/2"-13 x 2" Grade 8	Alloy Steel	24		0
6	D0900124	HAM-ISI aLIGO	Rubber	1		0
5	McMaster 92196A363	SHCS 3/8" - 24 x 1.5", 18-8	18-8 SSTL	8		0
4	D0901041	HAM to BSC Test Stand Adapter,	6061-T6 Al	2		0
3		Test/Assembly Stand, Leveling Foot ASSM		16		0
2	D1002661	Foot, Stand, Test, BSC-ISI+Quad + HAM-ISI, aLIGO	ASTM a500 Grade-B	4		0
1	D1002127	Support Tube, Stand, Test, BSC-ISI+Quad + HAM-ISI, aLIGO	ASTM a500 Grade-B	2		0

**LIGO** CALIFORNIA INSTITUTE OF TECHNOLOGY  
 MASSACHUSETTS INSTITUTE OF TECHNOLOGY  
 SIZE DWG. NO. **D1002124** REV. **v3**  
 SCALE: 1:10 PROJECTION: SHEET 2 OF 3

D1002124 Standard Test, BSC-ISI+Quad + HAM-ISI, aLIGO. PART PDM REV: X-003. DRAWING PDM REV: X-005



# BSC LOW CONFIGURATION

SAME A DEFAULT ON PAGE 1, BUT WITHOUT D1002126 & D1002727

ITEM NO.	PART NUMBER	DESCRIPTION	MATERIAL	Low BSC/QTY.	SPARE	TOTAL
8	McMaster 94105A708	Set Screw 1/2"-13 x 5/8"	Alloy Steel	8		0
7	McMaster 91375A832	Set Screw 3/4"-10 x 5/8" Steel	Alloy Steel	4		0
6	D0901182	BSC-ISI aLIGO	Material <not specified>	1		0
5	McMaster 92316A716	1/2"-13 x 1-1/2" Grade 8 Hex-flange Cap Screw	Plain Carbon Steel	48		0
4		Test/Assembly Stand, Leveling Foot ASSM		16		0
3	D1002661	Foot, Stand, Test, BSC-ISI+Quad + HAM-ISI, aLIGO	ASTM a500 Grade-B	4		0
2	D1002127	Support Tube, Stand, Test, BSC-ISI+Quad + HAM-ISI, aLIGO	ASTM a500 Grade-B	2		0
1	D1002125	Cross Brace, Stand, Test, BSC-ISI+Quad + HAM-ISI, aLIGO	ASTM a500 Grade-B	2		0
PARTS LIST						

**LIGO** CALIFORNIA INSTITUTE OF TECHNOLOGY  
 MASSACHUSETTS INSTITUTE OF TECHNOLOGY

SIZE DWG. NO. **D1002124** REV. **v3**

SCALE: 1:10 PROJECTION: SHEET 3 OF 3

D1002124 5hard, Test, BSC-ISI+Quad + HAM-ISI, aLIGO, PART PDM REV: X-003, DRAWING PDM REV: X-005