

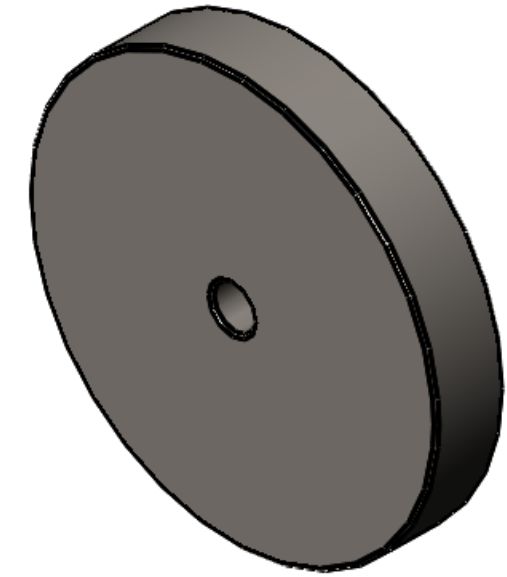
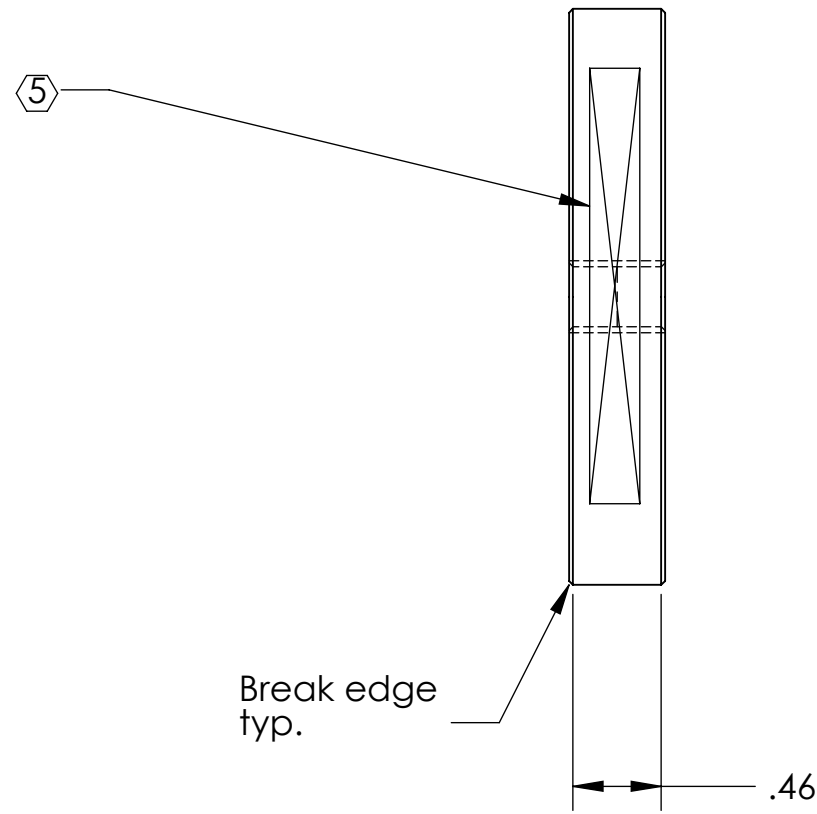
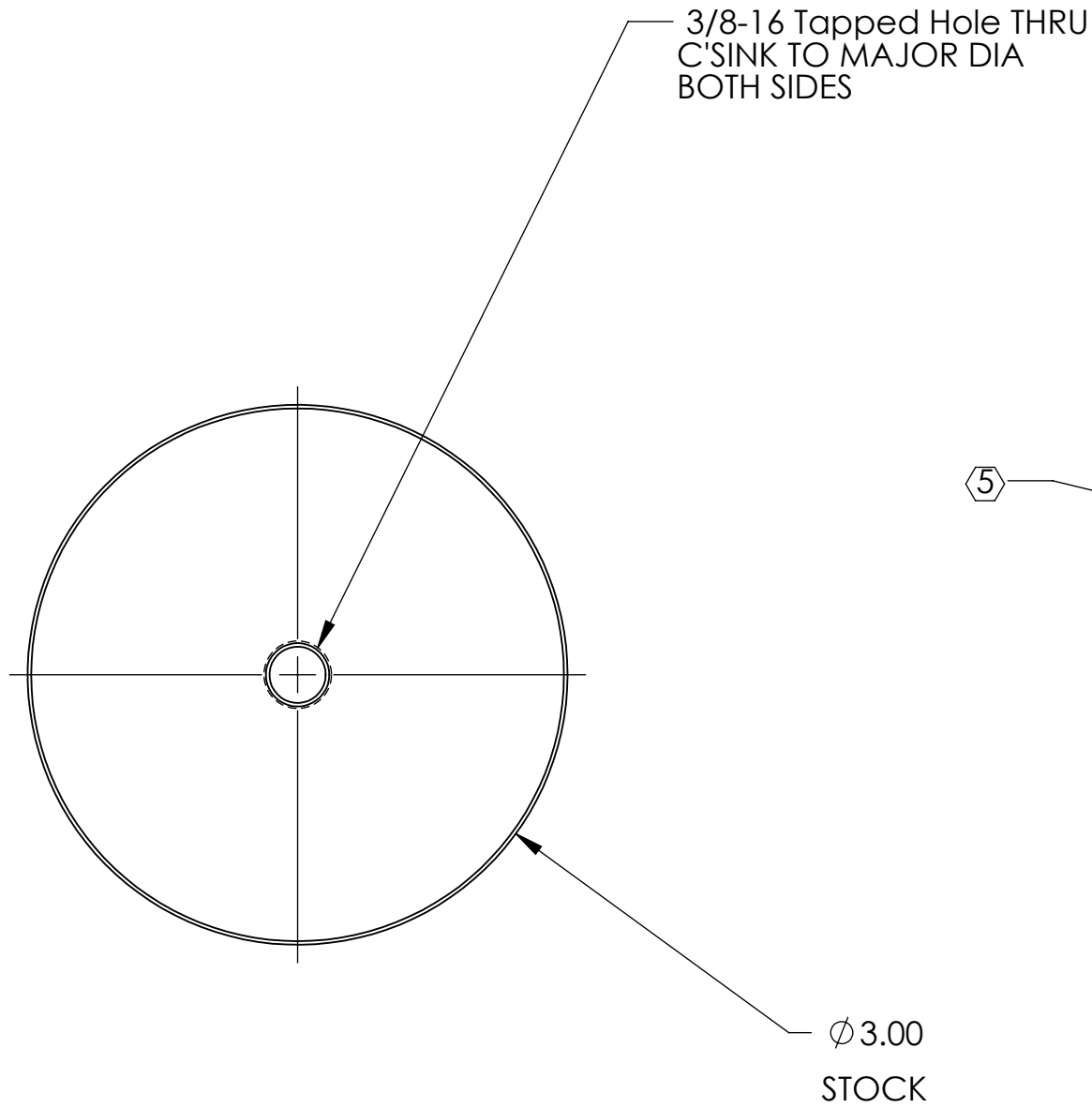
D1002102_dLIGO_TMS_TEST_MASS_RING1.29 KG W-SCR, PART PDM REV: X-005, DRAWING PDM REV: X-002

8 7 6 5 4 3 2 1

NOTES CONTINUED:
⑤ SCRIBE, ENGRAVE, OR MECHANICALLY STAMP (NO INKS OR DYES) DRAWING PART NUMBER, REVISION (AND VARIANT OR "TYPE" IF APPLICABLE) ON NOTED SURFACE OF PART FOLLOWED ON THE NEXT LINE WITH A THREE DIGIT SERIAL NUMBER. SERIAL NUMBERS START AT 001 FOR THE FIRST ARTICLE AND PROCEED CONSECUTIVELY. USE MINIMUM 0.12" HIGH CHARACTERS, UNLESS THE SIZE OF THE PART DICTATES SMALLER CHARACTERS. A VIBRATORY TOOL MAY BE USED.
EXAMPLE: DXXXXXX-VY, TYPE-XX, S/N XXX

REV.	DATE	DCN #	DRAWING TREE #
V1	9-19-12	E1000317	-
-	-	-	-
-	-	-	-

6. NICKEL PLATE FINISH



NOTES AND TOLERANCES: (UNLESS OTHERWISE SPECIFIED)				LIGO		CALIFORNIA INSTITUTE OF TECHNOLOGY MASSACHUSETTS INSTITUTE OF TECHNOLOGY		PART NAME	
DIMENSIONS ARE IN INCHES				ADVANCED LIGO		SUB-SYSTEM		aLIGO_TMS_TEST_MASS_RING 1.29KG W-SCR	
TOLERANCES: .XX ± .03 .XXX ± .005				NEXT ASSY		AOS		DESIGNER	KMAILAND
ANGULAR ± 1.0°				MATERIAL		STEEL HOT ROLLED BAR STOCK		DRAWN	KMAILAND
FINISH				CLEAN FOR NICKEL PLATE		D1002097		CHECKER	
								APPROVAL	
								SCALE: 1:1	PROJECTION:
								SIZE DWG. NO.	B
								D1002102	REV.
								v1	SHEET 1 OF 1

8 7 6 5 4 3 2 1