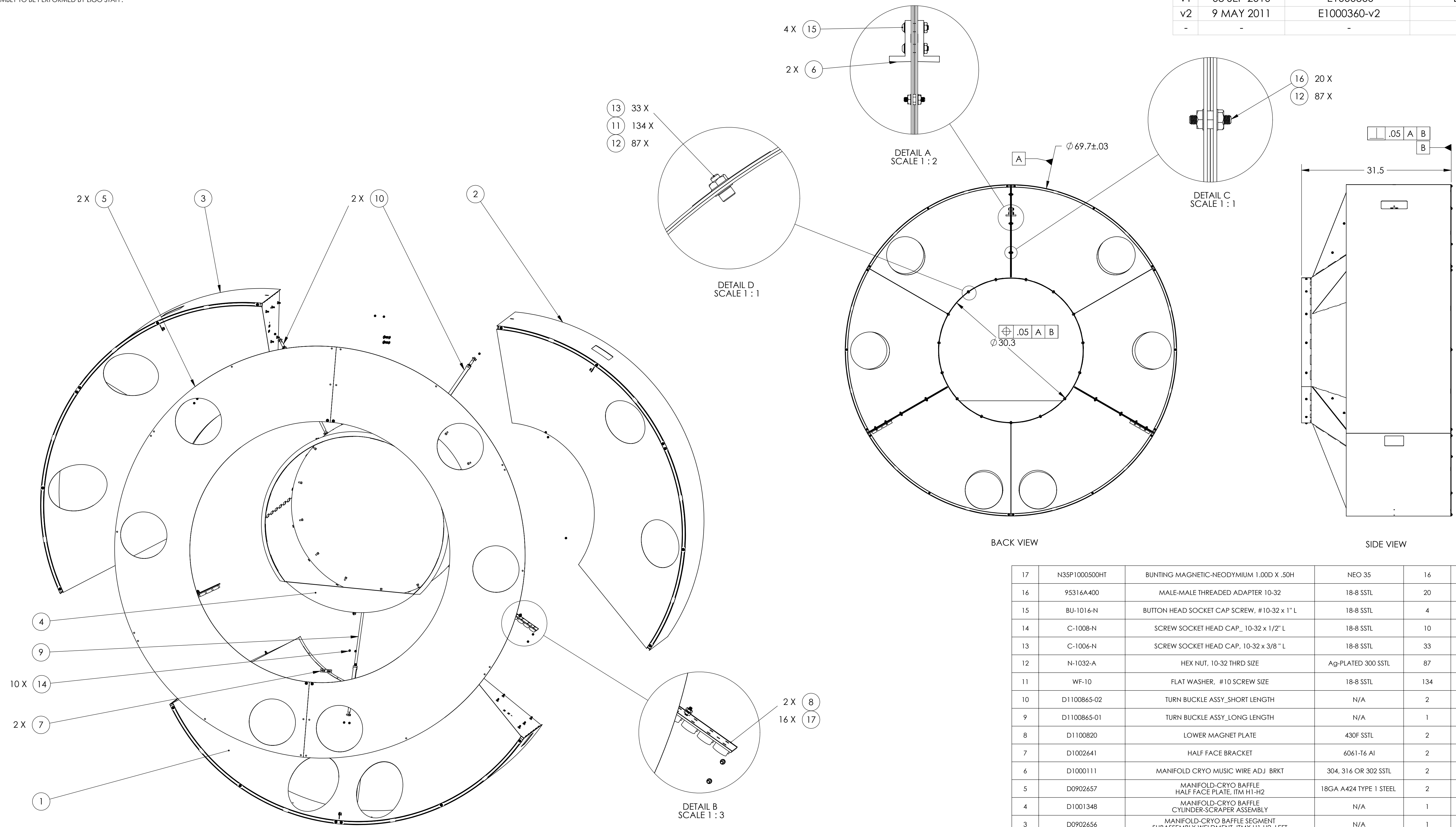


NOTES CONTINUED:
5. ASSEMBLY TO BE PERFORMED BY LIGO STAFF.

REV.	DATE	DCN #	DRAWING TREE #
v1	08 SEP 2010	E1000360	E1000359
v2	9 MAY 2011	E1000360-v2	-
-	-	-	-



ITEM NO.	PART NUMBER	DESCRIPTION	MATERIAL	REQ	SPARE	TOTAL
17	N35P1000500HT	BUNTING MAGNETIC-NEODYMIUM 1.00D X .50H	NEO 35	16		16
16	95316A400	MALE-MALE THREADED ADAPTER 10-32	18-8 SSSL	20		20
15	BU-1016-N	BUTTON HEAD SOCKET CAP SCREW, #10-32 x 1" L	18-8 SSSL	4		4
14	C-1008-N	SCREW SOCKET HEAD CAP_ 10-32 x 1/2" L	18-8 SSSL	10		10
13	C-1006-N	SCREW SOCKET HEAD CAP, 10-32 x 3/8" L	18-8 SSSL	33		33
12	N-1032-A	HEX NUT, 10-32 THRD SIZE	Ag-PLATED 300 SSSL	87		87
11	WF-10	FLAT WASHER, #10 SCREW SIZE	18-8 SSSL	134		134
10	D1100865-02	TURN BUCKLE ASSY_SHORT LENGTH	N/A	2		2
9	D1100865-01	TURN BUCKLE ASSY_LONG LENGTH	N/A	1		1
8	D1100820	LOWER MAGNET PLATE	430F SSSL	2		2
7	D1002641	HALF FACE BRACKET	6061-T6 Al	2		2
6	D1000111	MANIFOLD CRYO MUSIC WIRE ADJ BRKT	304, 316 OR 302 SSSL	2		2
5	D0902657	MANIFOLD-CRYO BAFFLE HALF FACE PLATE, ITM H1-H2	18GA A424 TYPE 1 STEEL	2		2
4	D1001348	MANIFOLD-CRYO BAFFLE CYLINDER-SCRAPER ASSEMBLY	N/A	1		1
3	D0902656	MANIFOLD-CRYO BAFFLE SEGMENT SUBASSEMBLY WELDMNT, ITMX H1-H2, LEFT	N/A	1		1
2	D0902654	MANIFOLD CRYO BAFFLE SEGMENT SUBASSEMBLY WELDMNT, ITMX H1-H2, RIGHT	N/A	1		1
1	D0902655	MANIFOLD-CRYO BAFFLE SEGMENT SUBASSEMBLY WELDMNT, ITMX H1-H2, BOTTOM	N/A	1		1

NOTES AND TOLERANCES: (UNLESS OTHERWISE SPECIFIED)	
DIMENSIONS ARE IN INCHES	
TOLERANCES: .X $\pm .1$.XX $\pm .06$.XXX $\pm .010$	
ANGULAR $\pm 1.0^\circ$	
MATERIAL	N/A
FINISH	N/A μ inch

LIGO CALIFORNIA INSTITUTE OF TECHNOLOGY
MASSACHUSETTS INSTITUTE OF TECHNOLOGY

SYSTEM: ADVANCED LIGO SUB-SYSTEM: AOS

PART NAME: RADIAL SEGMENT ASSY_2 FP

DESIGNER: H. KELMAN
DRAFTER: TQ. NGUYEN
CHECKER: M. SMITH
APPROVAL: D. COYNE

SIZE: D DWG. NO.: D1002061
DATE: 18 AUG 2010
REV.: v2

SCALE: 1:12 PROJECTION:

SHEET 1 OF 1

D1002061_dLIGO_AOS_ManifoldCryoBaffle_RadialSegment Assy_PART_PDM_REV-X-06_DRAWING_PDM_REV-X-023