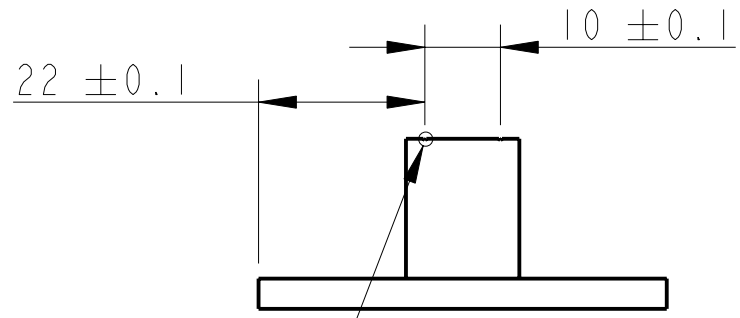


PART NO. (SEE NOTE 4) TO BE ETCHED OR STAMPED IN APPROX. POSITION SHOWN



SEE DETAIL B

NOTES: (UNLESS OTHERWISE SPECIFIED)

- REMOVE ALL SHARP EDGES, R.02 MIN.
- DO NOT SCALE FROM DRAWING.
- ALL MACHINING FLUIDS SHALL BE WATER SOLUBLE AND FREE OF SULFUR, CHLORINE AND SILICONE, SUCH AS CINCINNATI MILACRON'S CIMTECH 410 (STAINLESS STEEL)
- SCRIBE, ENGRAVE OR STAMP DRAWING PARTNUMBER ON NOTED SURFACE OF PART AND A THREE DIGIT SERIAL NUMBER. SERIAL NUMBERS START AT 001 FOR THE FIRST PART AND PROCEED CONSECUTIVELY. USE .07" HIGH CHARACTERS. EXAMPLE: D020188- 001. A VIBRATORY TOOL MAY BE USED.

DIMENSIONS ARE IN mm [INCHES]  
TOLERANCES:  
X.XX ±0.2 mm  
ANGULAR ±0.25 °

MATERIAL: AL ALLOY 6061/5083

FINISH: CLEAN, GREASE FREE  
√μm [μin] Ra = 1.6

	NAME	DATE
DRAWN	J O'DELL	MAR 09
CHECKED	AJB	--/--/--
APPROVED	JOD	--/--/--

	CALIFORNIA INSTITUTE OF TECHNOLOGY MASSACHUSETTS INSTITUTE OF TECHNOLOGY IGR, GLASGOW UNIVERSITY GEO 600 GROUP RUTHERFORD APPLETON LABORATORIES		
	SYSTEM	ADVANCED LIGO	
SUB-SYSTEM	SUS		
NEXT ASSY	BS ROUND MASS		
PART NAME	BS ROUND MASS PRISM BS TRIPPLE		
SIZE	DRG. NO.		REV
A	D080583		G.
SCALE 1:1	PROJECTION:	SHEET 1 OF	