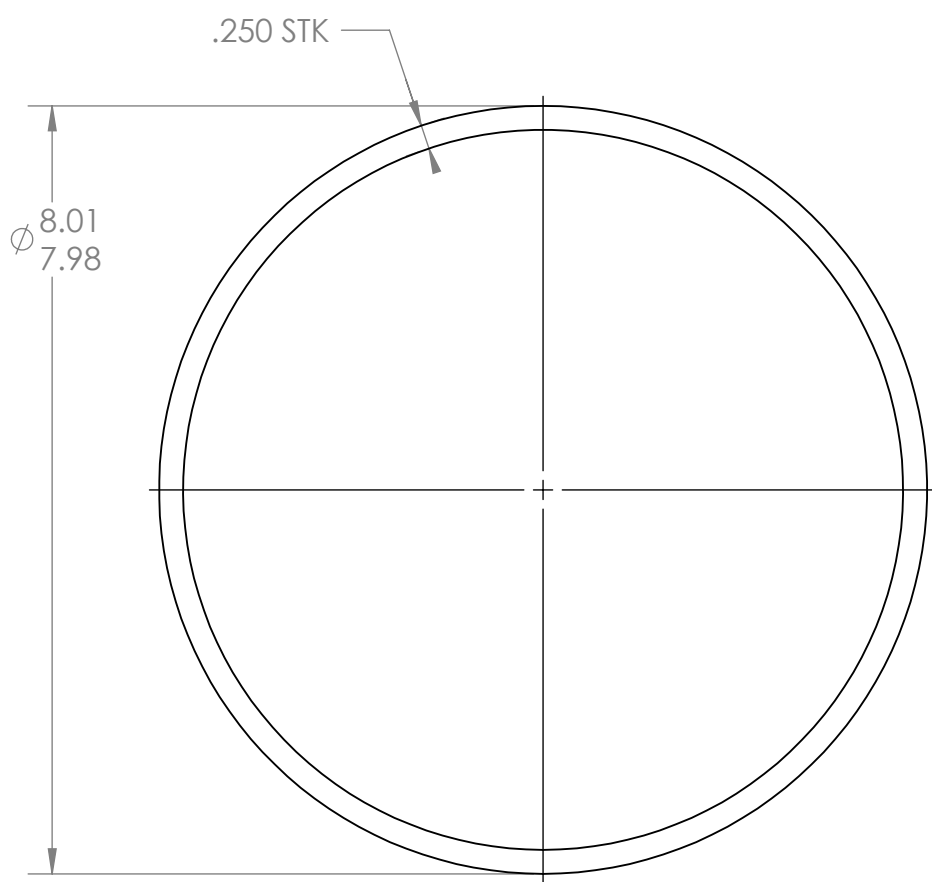


PROPRIETARY AND CONFIDENTIAL
 THE INFORMATION CONTAINED IN THIS
 DRAWING IS THE SOLE PROPERTY OF
 GNB CORPORATION. ANY
 REPRODUCTION IN PART OR AS A WHOLE
 WITHOUT THE WRITTEN PERMISSION OF
 GNB CORPORATION IS PROHIBITED.

REVISIONS				
ZONE	REV.	DESCRIPTION	DATE	APPROVED
	A	4.28 WAS 3.94	8/13/2010	MKM2
	B	RELEASED TO PRODUCTION	8/23/2010	MKM2



- NOTES:**
- THE FOLLOWING ARE NOT ALLOWED: GRINDING, HONING, LAPPING, POLISHING, BUFFING, SANDING, BLASTING.
 - NO HYDROCARBONS ALLOWED IN THE COOLANT. COOLANT LIMITS AS FOLLOWS
 - WATER LEACHABLE CHLORIDES: 100PPM
 - TOTAL HALOGENS (INCLUDING CHLORIDES): 1000PPM
 - TOTAL SULFUR: 1000PPM
 - DO NOT ALLOW PART TO BE CONTAMINATED BY CARBON STEEL OR IRON CONTACT.
 - MACHINING TO BE IN LINE WITH LIGO SPECIFICATION E0900406, LATEST REVISION.



DESCRIPTION: TUBE, 8.00 OD, .25 WALL, 4.28 LG
MATERIAL: AISI 304/AISI 304L DUAL CERT PER SA 240

UNLESS OTHERWISE SPECIFIED: WEIGHT: 7.53 #

DIMENSIONS ARE IN INCHES
 TOLERANCES: FINISH
 ANGULAR: ±0°0' 125
 .XX ± .03
 .XXX ± .005
 UNSPECIFIED FILLETS: R.015
 BREAK EDGES .010 x 45°
 REMOVE ALL BURRS

APPROVALS

	NAME	DATE
DRAFTER	MKM2	7/26/10
CHECKER		
ENGINEER	MKM2	7/26/10

THIRD ANGLE PROJECTION

DO NOT SCALE DRAWING

GNB CORPORATION
 SCIENTIFIC AND INDUSTRIAL EQUIPMENT
 3200 DWIGHT RD, SUITE 100
 ELK GROVE, CA 95758
 916-395-3003 FAX: 916-395-3363
 WWW.GNBVALVES.COM

TITLE: TUBE, 10" CF, MC-TUBE PORT

DWG. NO. **A** 114435-00S
 SCALE: 1:2 SHEET 1 OF 1

REV B