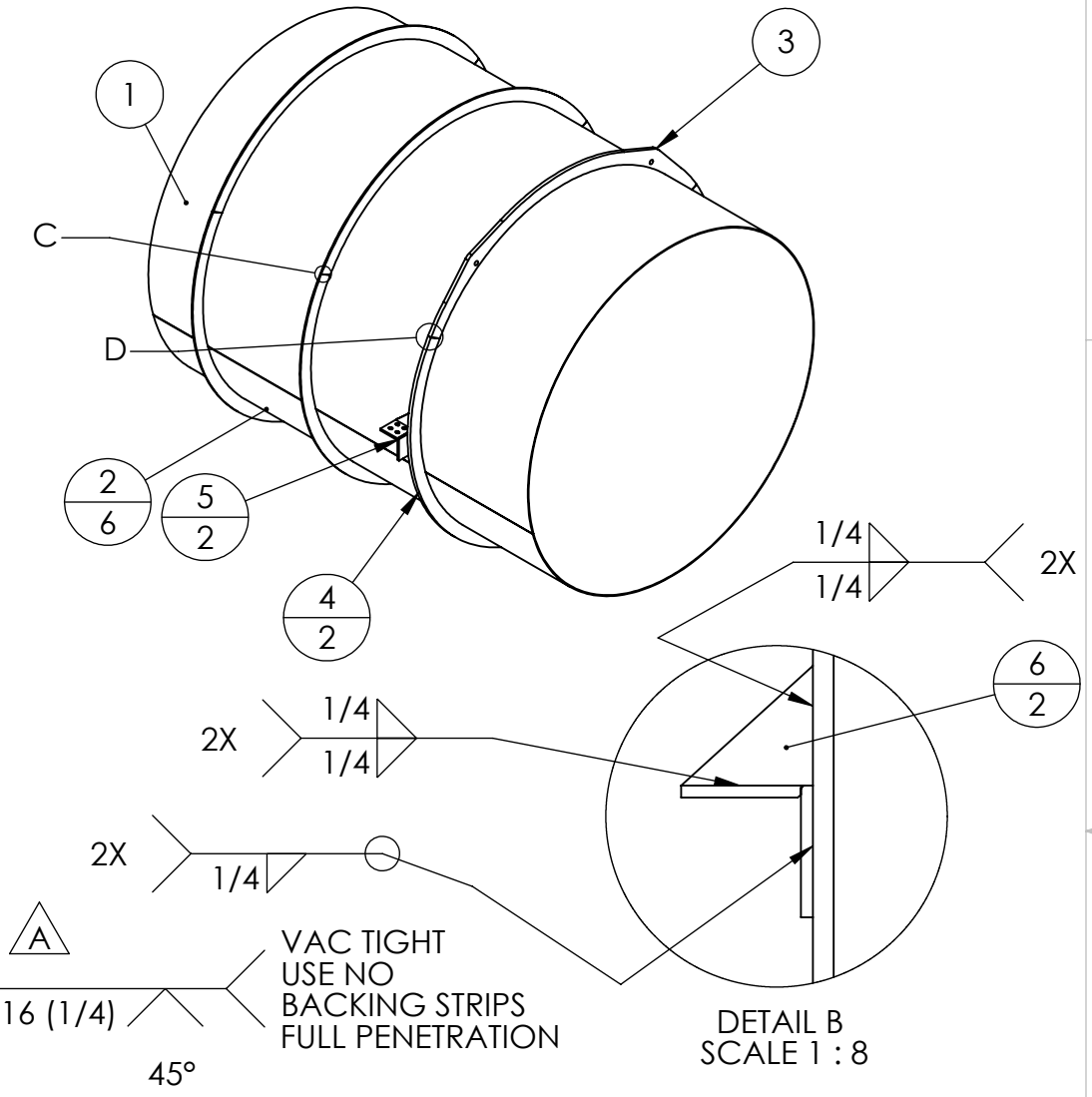
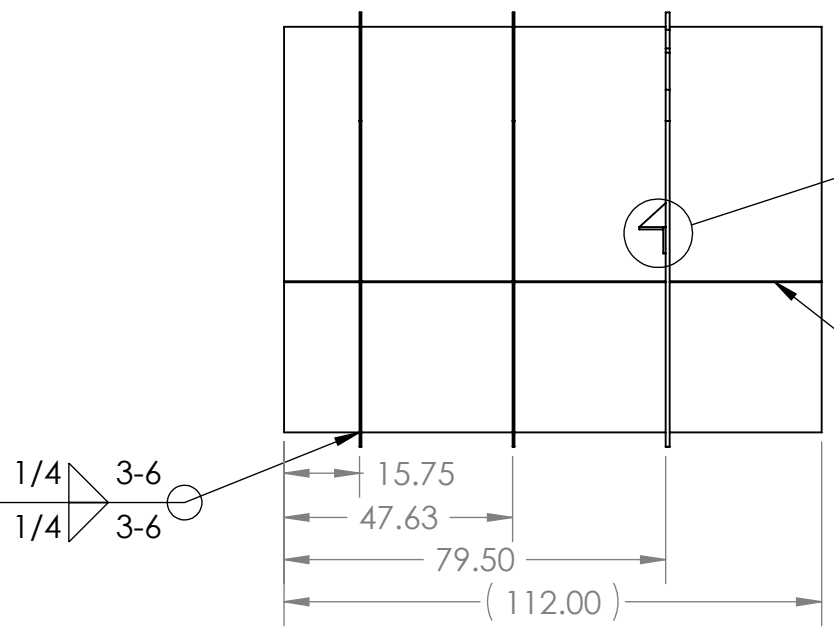
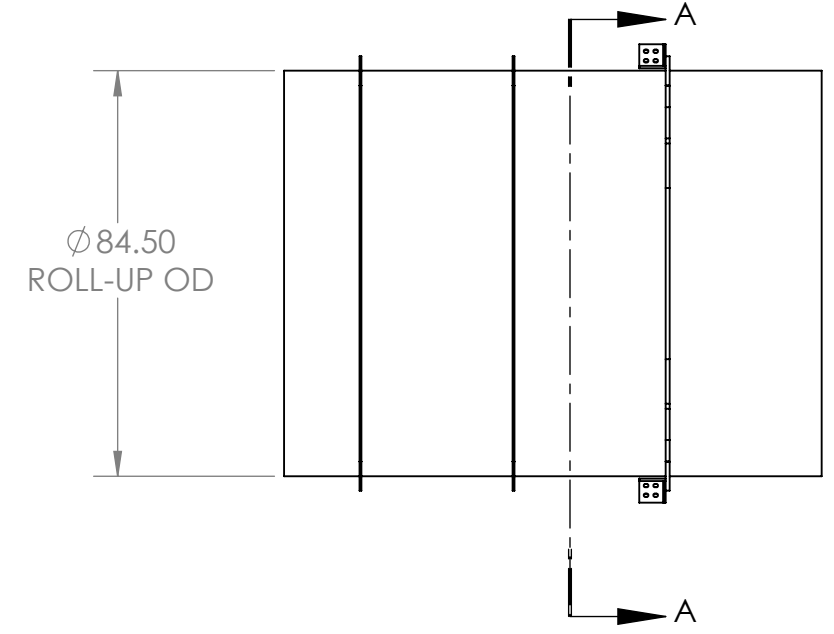
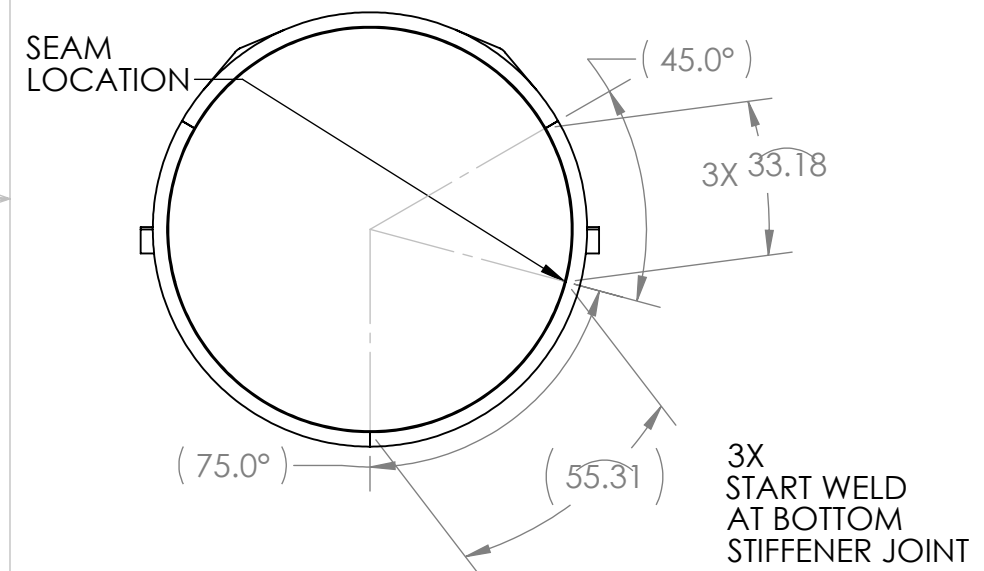
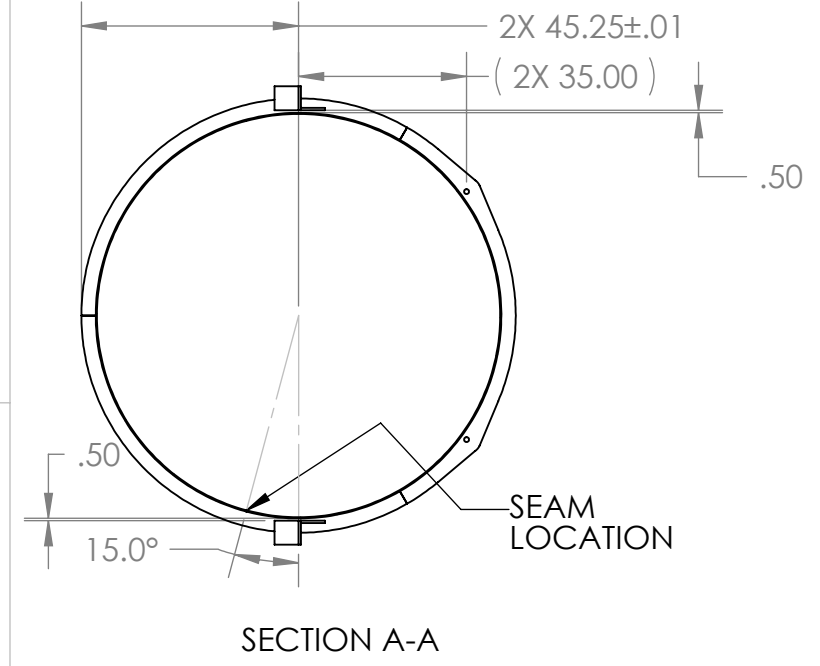
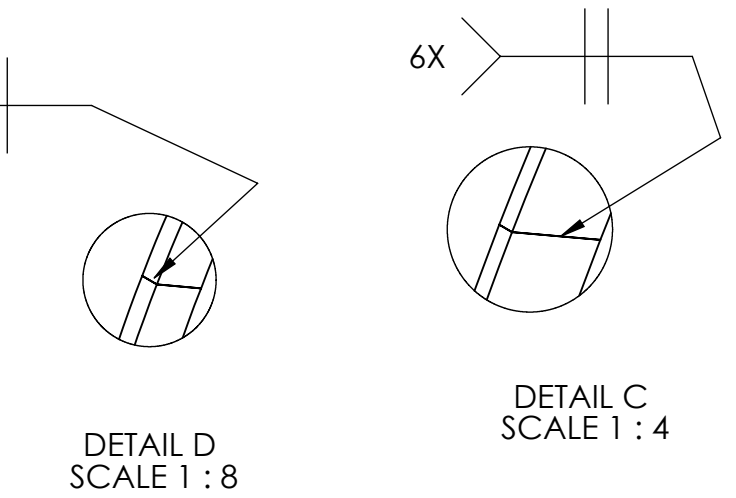


PROPRIETARY AND CONFIDENTIAL
 THE INFORMATION CONTAINED IN THIS DRAWING IS THE SOLE PROPERTY OF GNB CORPORATION. ANY REPRODUCTION IN PART OR AS A WHOLE WITHOUT THE WRITTEN PERMISSION OF GNB CORPORATION IS PROHIBITED.

REVISIONS				
ZONE	REV.	DESCRIPTION	DATE	APPROVED
	A	REVISED WELD CALL-OUT	8/11/2010	MKM2
	B	RELEASED TO PRODUCTION	8/25/2010	MKM2



- NOTES:
1. ALL WELD PREPS TO BE DONE BY TUNGSTEN CARBIDE CUTTING TOOLS ONLY
 2. WELD PER QP1750-W2, LIGO WELDING AND REPAIR PROCEDURE, LATEST REVISION
 3. CLEAN WELD WIRE AND WELD PREP SURFACES WITH CO2 SCRUBBING
 4. INTERNAL WELD SURFACE TO BE SMOOTH BUT NOT GROUND
 5. ALL WELDS TO BE GTAW UNLESS OTHERWISE NOTED
 6. ALL INTERNAL WELDS TO BE CONTINUOUS AND VACUUM TIGHT
 7. NO POST WELD HEAT TREATMENT IS REQUIRED



ITEM NO.	PART NUMBER	DESCRIPTION	QTY.
1	114203-00S	ROLL-UP, MC-B TUBES	1
2	114204-00S	STIFFENER, 1/3, PLAIN, MC TUBE	6
3	114205-00S	STIFFENER, LIFTING, MC TUBES	1
4	114206-00S	STIFFENER, THICK, MC TUBES	2
5	114207-00WS	WELDMENT, BRACKET, MC TUBE	2
6	114427-00S	PLATE, BRACKET, BRACE	2

MATERIAL: AISI 304/AISI 304L DUAL CERT PER SA240

UNLESS OTHERWISE SPECIFIED: DIMENSIONS ARE IN INCHES
 TOLERANCES: ANGULAR: ± 0°30'
 .XX ± .03
 .XXX ± .005
 UNSPECIFIED FILLETS: R.015
 BREAK EDGES .010x45°
 REMOVE ALL BURRS

FINISH 125

WITHIN .03

THIRD ANGLE PROJECTION

WEIGHT: 2551.63#

APPROVALS	DATE
DRAFTER MKM2	7/9/10
CHECKER RW	7/22/10
ENGINEER MKM2	7/9/10

GNB CORPORATION
 SCIENTIFIC AND INDUSTRIAL EQUIPMENT

3200 DWIGHT RD. SUITE 100
 ELK GROVE, CA, 95758
 916-395-3003 FAX: 916-395-3363
 www.gnbvalves.com

TITLE: **WELDMENT, TUBE, LEFT, MCB**

DO NOT SCALE DRAWING

SCALE: 1:40

DWG. NO. **B** 114202-00WS

SHEET 1 OF 1

REV **B**